

Document: REPL.IX/2/R.4  
Agenda: 5  
Date: 1 June 2011  
Distribution: Public  
Original: English

A



تمكين السكان الريفيين الفقراء  
من التغلب على الفقر

\_\_\_\_\_  
Deirdre McGrenra

\_\_\_\_\_  
Kevin Cleaver

+39 06 5459 2374 :  
[gb\\_office@ifad.org](mailto:gb_office@ifad.org) :

+39 06 5459 2419 :  
[k.cleaver@ifad.org](mailto:k.cleaver@ifad.org) :

<b>1</b>	-
<b>2</b>	-
<b>5</b>	-
<b>7</b>	-
<b>9</b>	-
<b>13</b>	-
<b>14</b>	-

-  
-1

.<sup>1</sup>2015

-2

( 18 )

4.5  
2015-2013

6.75

.(  
)

6 )

4

3.5

.(

5.25

3.2

(

4.8

)

-3

"

" ( -1 ) "

"

1

.2015 ( -1 ) "

(REPL.IX/2/R.5 )

.2015

-

REPL.IX/2/R.2

-4

( )

925 2010

2

70

-5

( )

( )

70 50

3

.2015

.<sup>4</sup>2015

-6

( )

500

-7

(2011 : ) 2011-2010

2

.66

(2010 : ) 2010

3

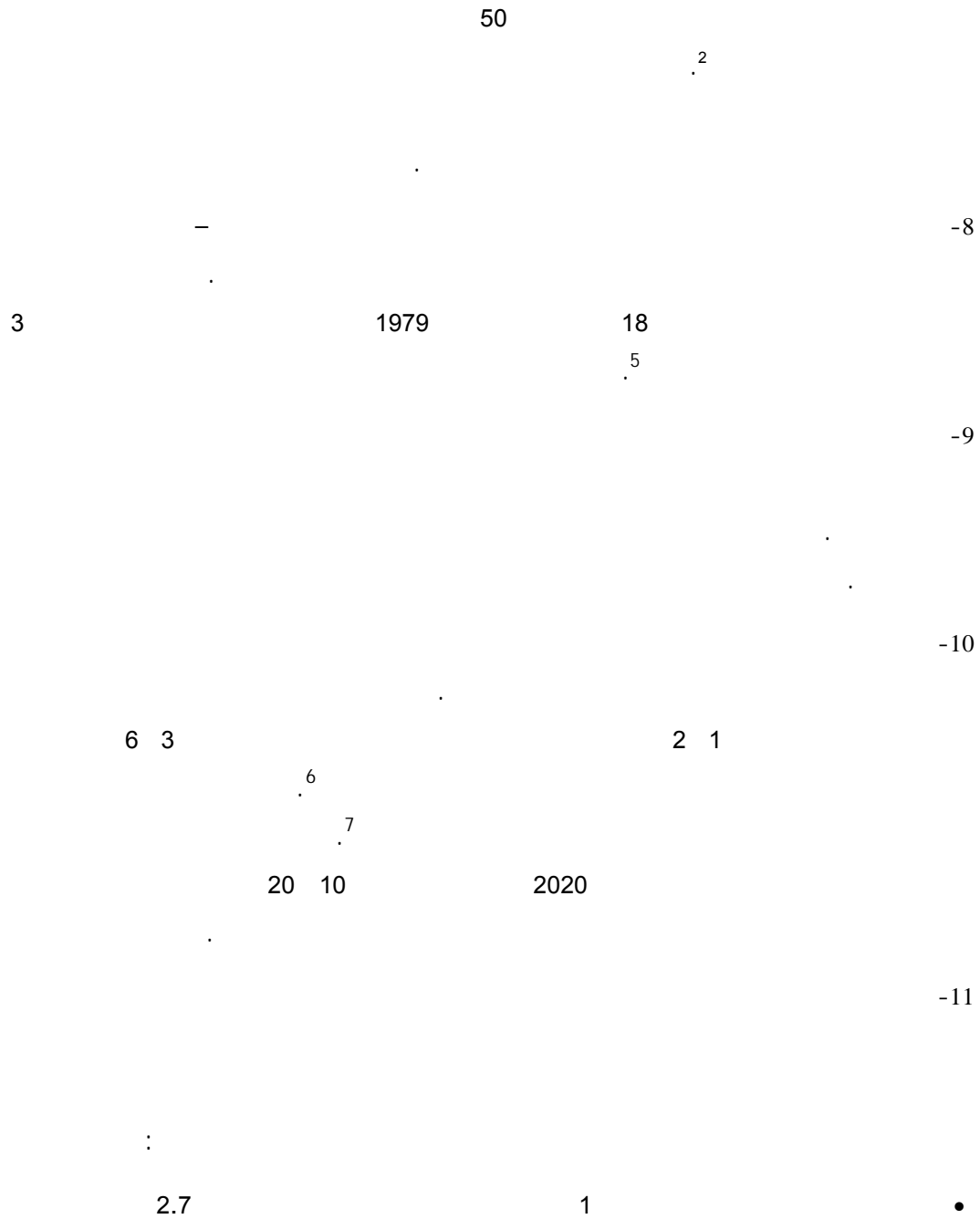
(2007 ) :2008

4

(2010 ) 2011

(2010 / )

(2010 ) ( ) Realizing a New Vision for Agriculture



5  
 (2007)  
 6  
 The new face of hunger: Global food shortages have taken everyone by surprise. What is to be done?  
 2008 / 17 (" ) done?  
 7  
*Food Policy Report: Climate Change Impact on Agriculture and Costs of*  
 : ) ( : ) Adaptation  
 (2009 /

3 2.5

5

8

-12

2015

"

9" 25

1

14	(2007)
16	
83	
7	
	7

2

4	2002
6	2007
8	2010

Update: Setting Priorities for Public Spending for Agricultural and Rural

8

(  
 .(2009 : ) / 12  
 .42 (2010)

: ) Development in Africa

9

REPL.IX/2/R.4

1

-13

.(1 )

-14

REPL.IX/2/R.3

-

-15

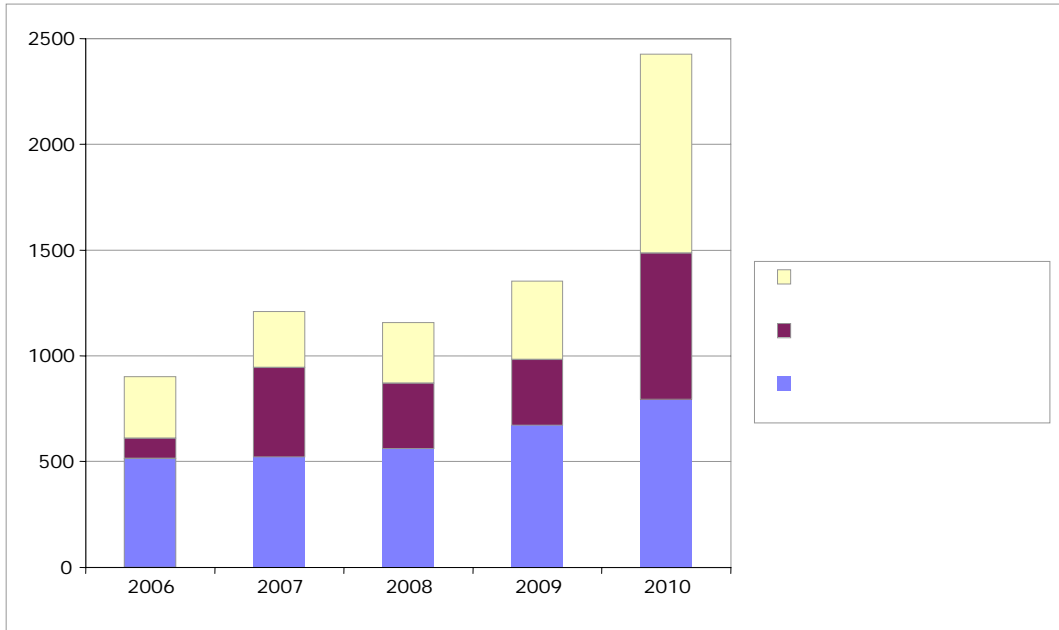
855

2010

.2010

-16

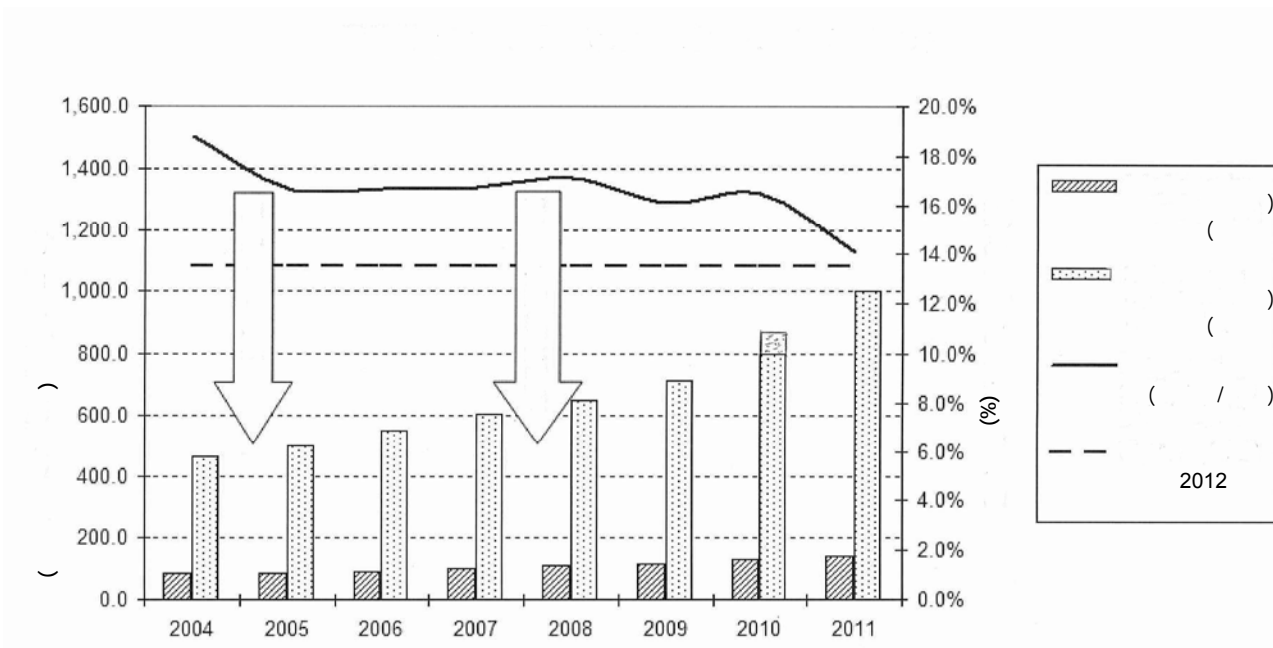
( ) (2010-2006)



-17

2

2





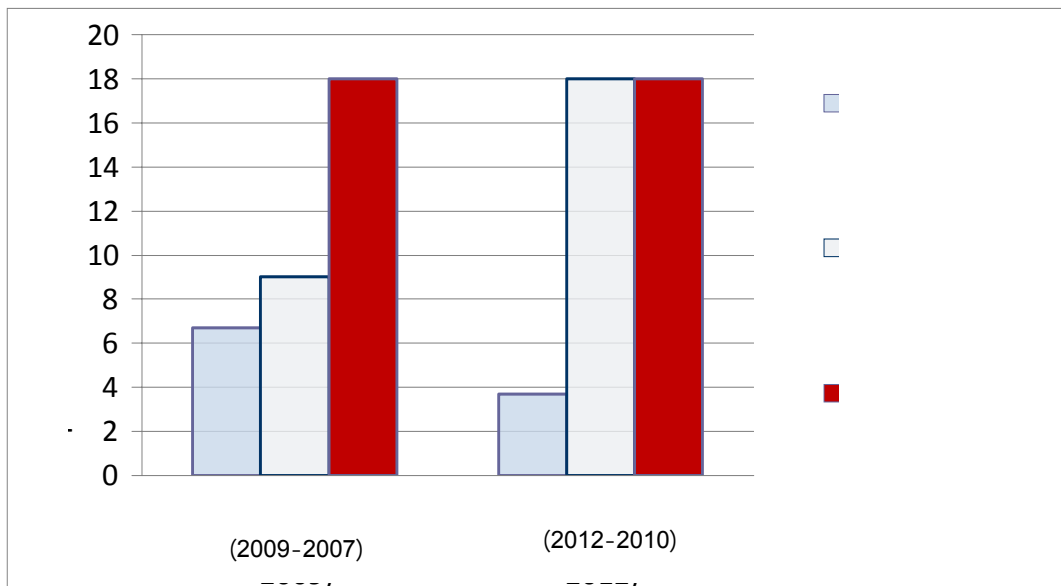
(REPL.IX/2/R.3 )

.3

9

18

3



-

(REPL.IX/2/R.2 )

2011 /

:

( )

( 1 1.50 )

( )

)

( ( )

14

( 18 )

( )

)

.(

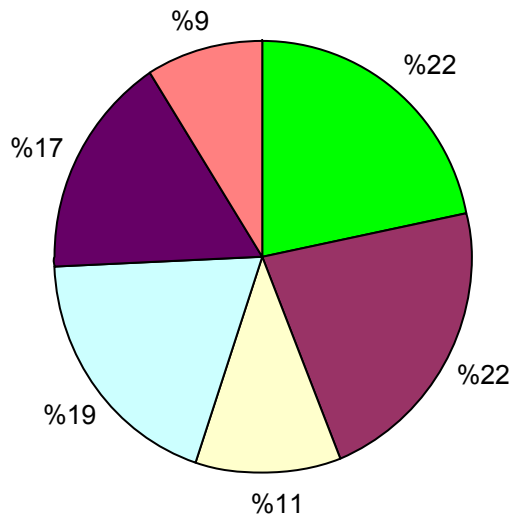
-20

.2015

4

4

2015



:

-21

)

)

(

.(

-

-22

.(3 )

6.75 4.5 -23

2015-2013

4.8 3.2

.( )

.(REPL.IX/2/R.5)

3

---

1 980	1 919	(2009-2007)
4 500	3 000	(2012-2010)
6 750	4 500	(2015-2013)
6 000	4 000	(2015-2013)
5 250	3 500	(2015-2013)
4 800	3 200	(2015-2013)

---

-24

2010 ( ) 2010

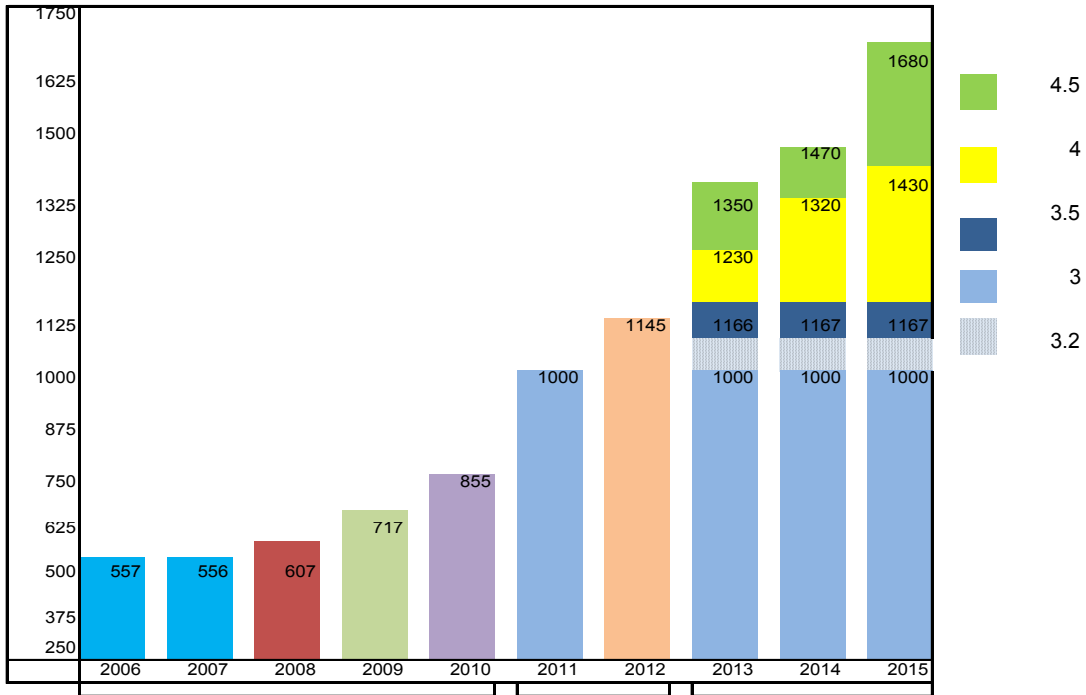
2012 2011 855

3.2

2012

2013 1.070 )

4 3.5 .(2015



4

( )

---

---

33

65

120

100

90

75

---

-26

120

3.5

202

32

2.2

1.5

65

22

33

110-55

( )

.5

(2015-2013)

(2015-2013)

4

3.5

755	660	850	560
860	755	970	630
1 200	1 050	1 350	920
435	380	490	320
510	445	570	380
240	210	270	190
4 000	3 500	4 500	3 000

.2010

-27

1.5

-28

40 35

55 45

2015-2013

2012

-29

)

.(

-

-30

( )

( )

.(

)



1

2010	2009	2008	2007	2006	2005
131.4	126.7	119.6	118.1	104.4	90.0
3.7	5.9	1.2	13.1	16.0	

2

<i>(2015-2003)</i>			<i>(2012-2010)</i>		<i>(2009-2007)</i>
7.8	1.6	14	18		9
7.8	1.6	14	18		18
			3.7		6.7