

Document: EB 2010/101/R.10  
Agenda: 6(c)  
Date: 11 December 2010  
Distribution: Public  
Original: English

**A**



تمكين السكان الريفيين الفقراء  
من التغلب على الفقر

**2009**

: _____ : _____ <b>Liam Chicca</b>	: _____ : _____ <b>Luciano Lavizzari</b>
+39 06 5459 2462 : <a href="mailto:l.chicca@ifad.org">l.chicca@ifad.org</a> :	+39 06 5459 2274 : <a href="mailto:l.lavizzari@ifad.org">l.lavizzari@ifad.org</a> :

**iii**

**1**

-

**2**

-

3

-

3

-

**7**

-

7

-

12

-

22

-

23

:

-

28

-

34

-

36

-

**39**

-

41

-

50

-

54

-

-

**56**

-

**59**

**2010**

-

**67**

-

67

-

72

-

-

-

-

2009

-  
-  
-



			-6
			-7
			-8
	.2002	-	-9
2006			-10
		9	55
		2009-2006	
2010			-11



<sup>1</sup> منظمة الأغذية والزراعة للأمم المتحدة، 2010.

-17

)

(

)

(

2012

2010

-18

2012

:

-19

)

(

•

•

•

-20

-21

"

"

-22

: ) (1)

(

2011

(2)

-

(3)

2015-2011

() :

( )

( )

( )

)

.(

(4)

(

)

(5)

.2011



.2012



" "

-7

3

4

-8

)

.(

( )

.2006

( )

-9

.2010 /

.2010

-10

:

-

.2009

.2011

-11

.2009

"

"

(2010 / )

3

4

<http://www.ifad.org/qbdocs/eb/99/e/EB-2010-99-R-> :

[.6.pdf](#)

2002

-

-12

<sup>5</sup>2009

-13

<sup>6</sup>(1)

(6)

-14

2009

.2002

( )

7

.2009

2002

-

17

1

-15

2009

17

11

<sup>8</sup>

9

6

)

:

:

<sup>5</sup>

[http://www.ifad.org/evaluation/process\\_methodology/index.htm](http://www.ifad.org/evaluation/process_methodology/index.htm)

.1 -

2 -

3 -

4 -

5 -

6 -

<sup>6</sup>

(

)"

"

<sup>7</sup>

( )

( )

2007

12

2008

11

2009

<sup>8</sup>

15

6

<sup>9</sup>

38

779 .(

.( 44) 339

2010 .

.2010

2009 2002 -16

1990 2010

.2001

.(2 ) 2006 2002

44 . -17

2009-2007

2000 2009-2007

.2006-2005

" " -18

---

(2)

(1) :

-19

:

10

-20

2011

2009-2008

10

.2009

**2009**

		0					
)0		)				/	
(		(					
25.0	17.5	/	1999	/		( )	
		2010					
22.3	15.0	/	1995	/		( )	
		2004					
53.5	19.2	/		/			
		2005		1996			
53.2	42.9	2008	/	1997	/		
41.7	23.0	/	1999	/			
		2011					
134.0	22.0	/	2000	/			
		2009					
24.0	15.0	/	2001	/			
		2006					
25.7	19.4	/		/		( )	
		2006		1996			
26.6	22.8	/		/			
		2008		1999			
30.6	18.0	2011	/	2001	/		
27.3	11.8	/		2000	/	( )	
		2006					
88.7	25.7	2010	/	/			
				2001			
60.0	19.9	/	1997	/			
		2011					
22.9	11.3	/	2001	/			
		2009					
19.3	13.1	2008	/	2000	/		
107.3	30.4	2008	/	/			
				2000			
17.0	12.1	/		/			
		2007		1997			
<b>779.1</b>	<b>339.1</b>						

( )

( )

2002

2009

-21

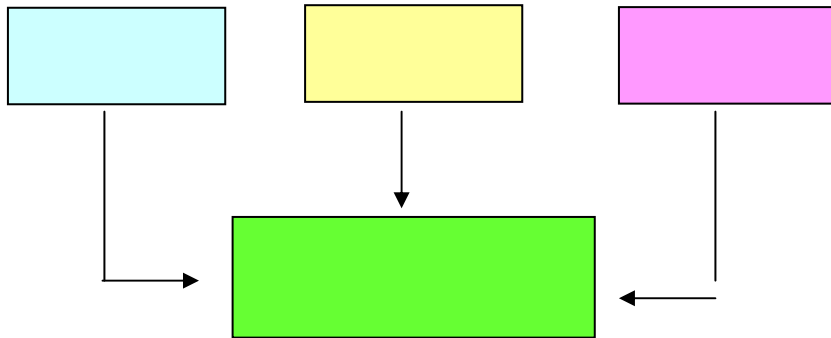
14

.(1 )

.11

-22

1



2

-23

60

.2002

.2009-2007

24

2004-2002

2

-24

2009-2007

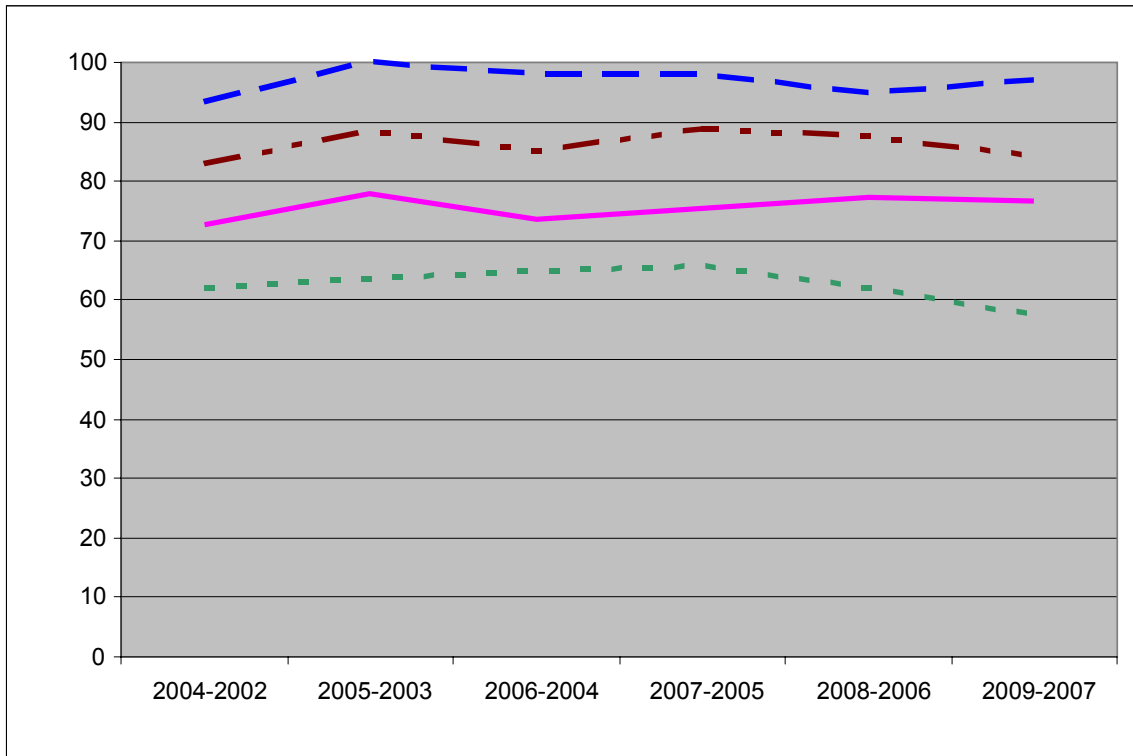
2009-2007



2002

2

(2009-2002)



-28

2009

13

1

-29

( " " )

1

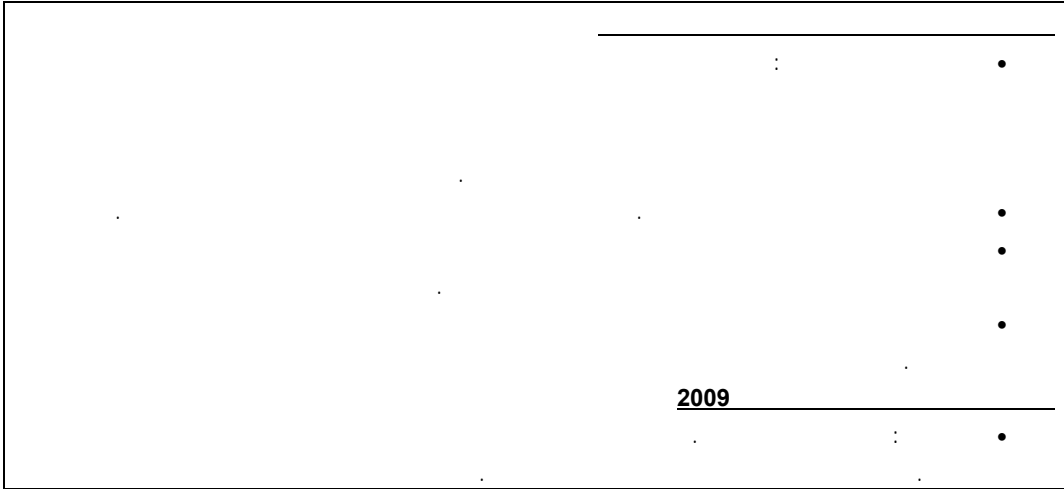
-30

2011



2

" "



2009

)

/

-34

(

42

2009-2007

.2002

2

15

-

-35

-

)

.(

:

2009

-36

14

(2008

)

.(2009

)

14



:

3

-38

.2002

.2002

2009-2007

(5 )

50

37 - 35

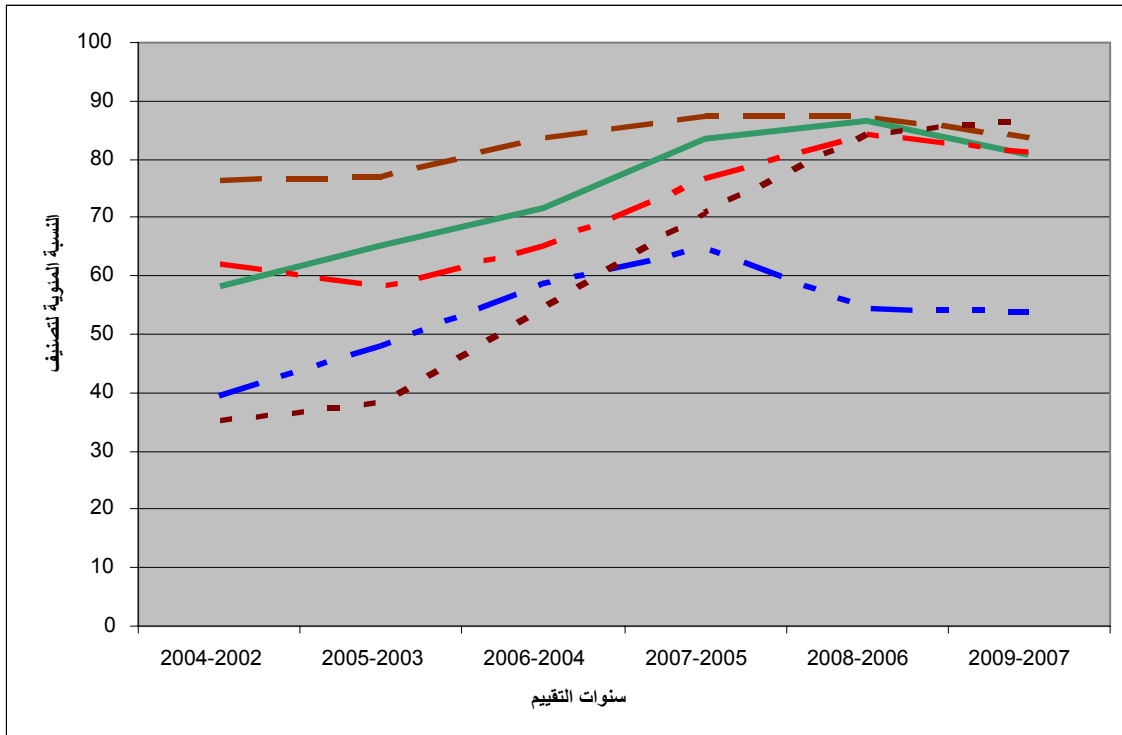
2006

-39

2010

2010 /

(2009-2002)



( 5 ) -40

-41

( )

( 53 - 49 )

( 3 )

-42

17

20 .2009-2007

50 2004-2002

11

2009-2007

-43

( )

/ /

2009

-44

-45

2009

-46



-47

( )

15

-48

5

" "

			•
			•
			•
		<b>2009</b>	•
			•
			•

-49

/

35 2009-2002

-50

.2009-2007 86 2004-2002

2009-2007 50

14 24

---

/

2009

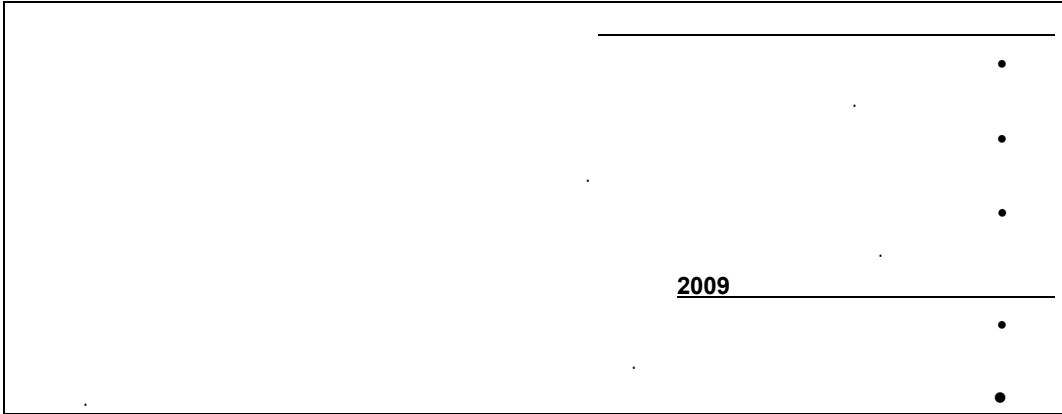
:

.( )

/

6

" "



/

-54

( )

.( )

( )

-55

84 2004-2002

76

.2009-2007

30 2004-2002

35 )

31 )

(2009-2007

.(2009-2007

49 2004-2002

-56

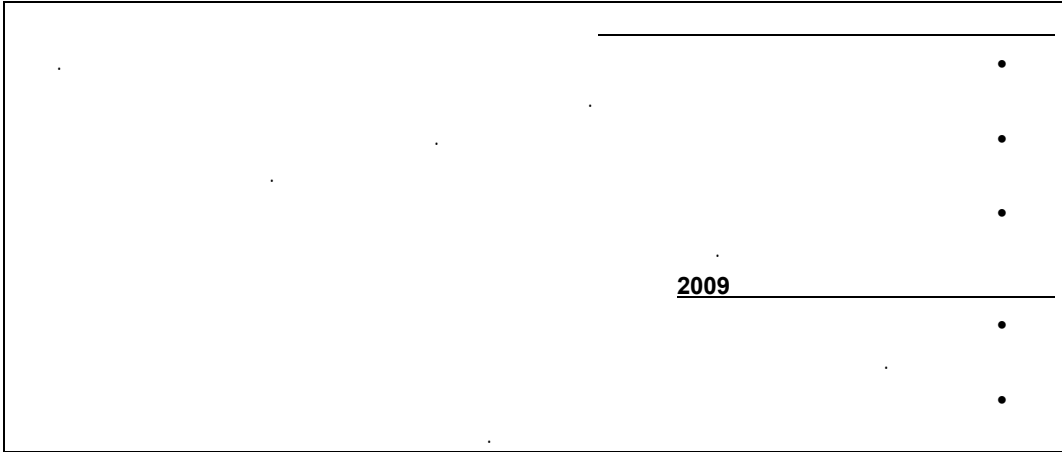
-57

.( )

( )

7

" "



2009

-58

31

24

.2009-2007

37

38

2004-2002

2009-2007

-59

:

-60

-61

-62

8

" "

		•
		•
		•
		•
	<b>2009</b>	•
		•
		•
		•

-63

.2002				-64
2004-2002		25		
33			14	
.2009-2007	4	17		
-2007				
			2009	
				-65
			9	

(1) : 2009 -66  
 (2)

3 600

-67

9  
" "

	•
	•
	•
	•

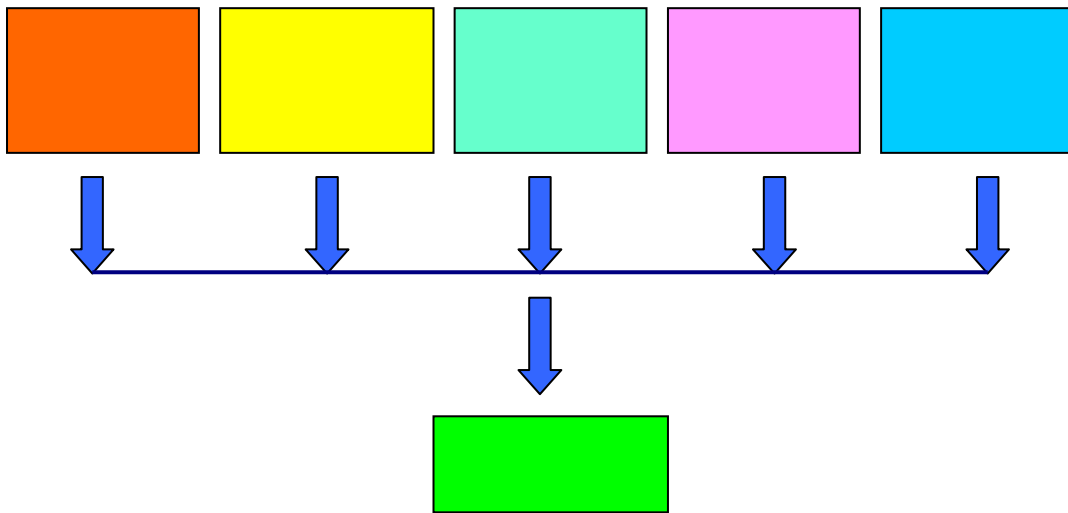
	2009
	.
	.

-

-68

.(4 )

4



31

2002

-69

10

49

2004-2002

7

.(5

) 2009-2007

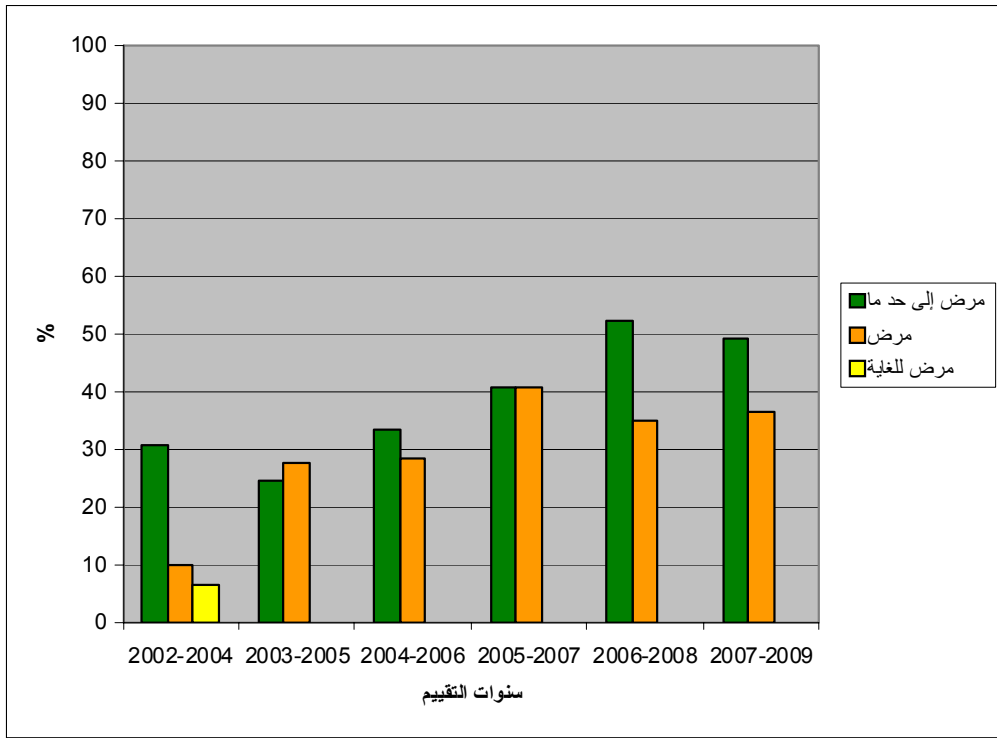
37

2004-2002

2006

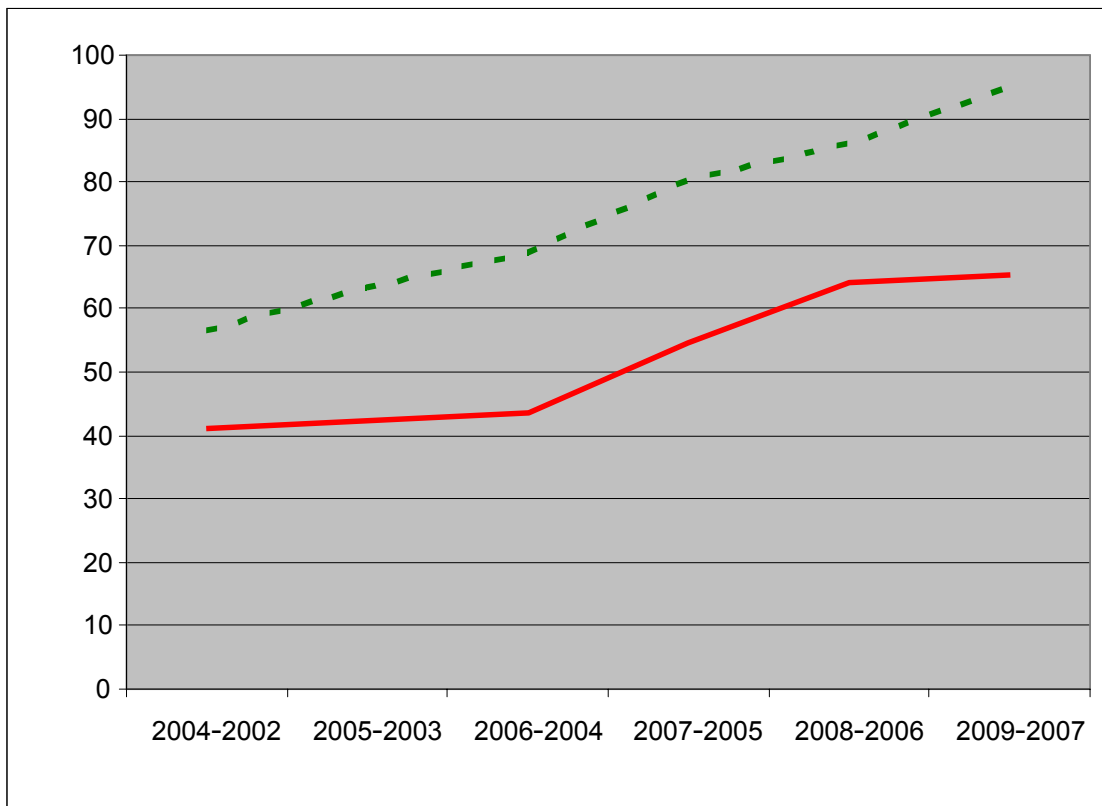
.2005

(2009-2002)



(1) :





-73

2007

-74

.( )

16

2009 2008

-75

2009

-76

.( ) ( ) ( )

/

-77

/

2008 /

REPL.VIII/3/R.3

16

( 80)

11

" "

		_____	•
		_____	•
	/	<u>2009</u>	•

(1) :

(2)

( )

2009

2010

-81

)

(

-82

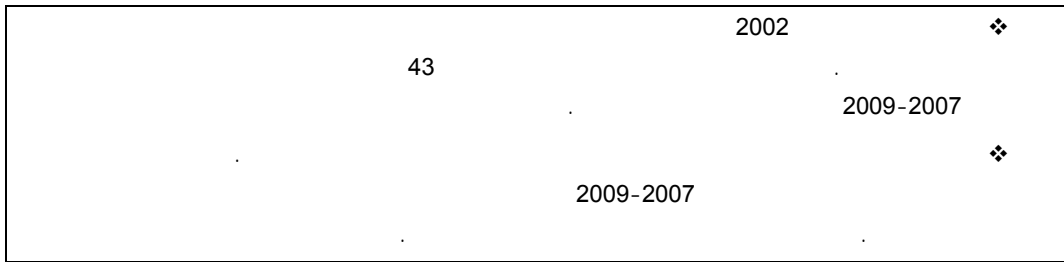
2010/2009

2011

12

" "

	•
	•
	•
	•
	•
( )	•
	•
	•
( )	•
	•
	•
	•
	•
	•
2009	•
	•
	•

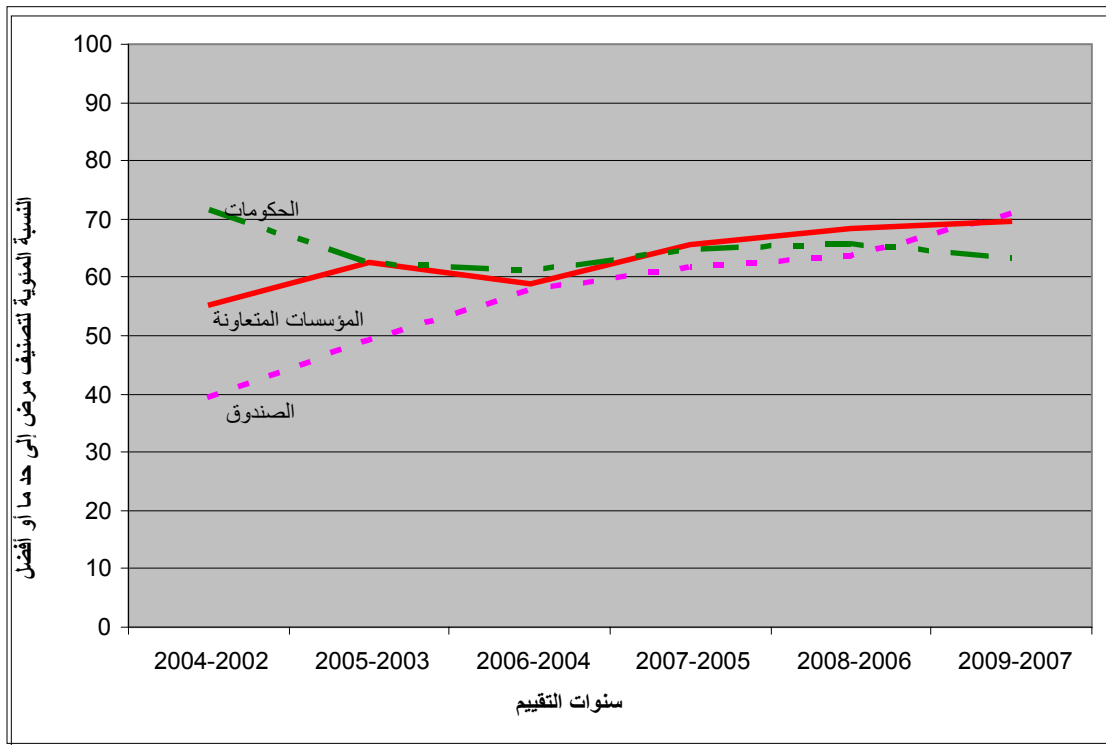


-83

.2002

7

7



					-84
45	2009-2007			.2002	
		25			
	2009-2007		70		
		.2004-2002	39		
	:			2009-2007	-85
					-86
	.2009				-87
	:				
	2006				-88

-89

.2003

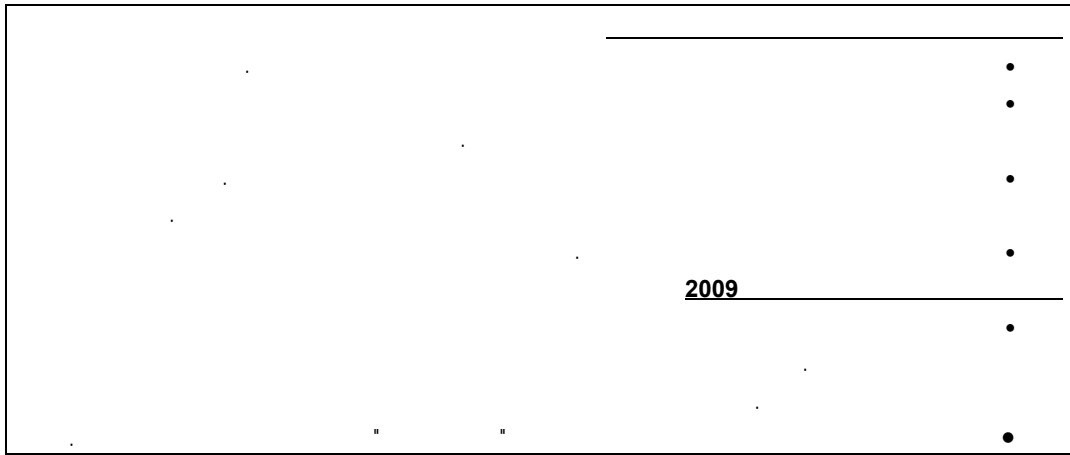
-90

-91

2006

14

" "



32 .2002

-93

27 36

2004-2002

39

.2009-2007

2009-2007

-94

-95

17

.(2010

)

17



" " -96

)

.(

2009 -97

-98

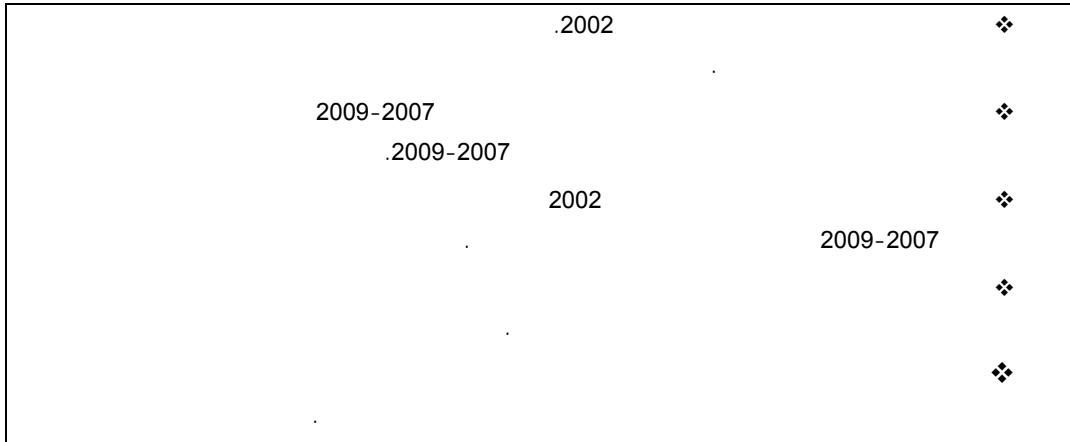
( )  
)

(

-99

( )

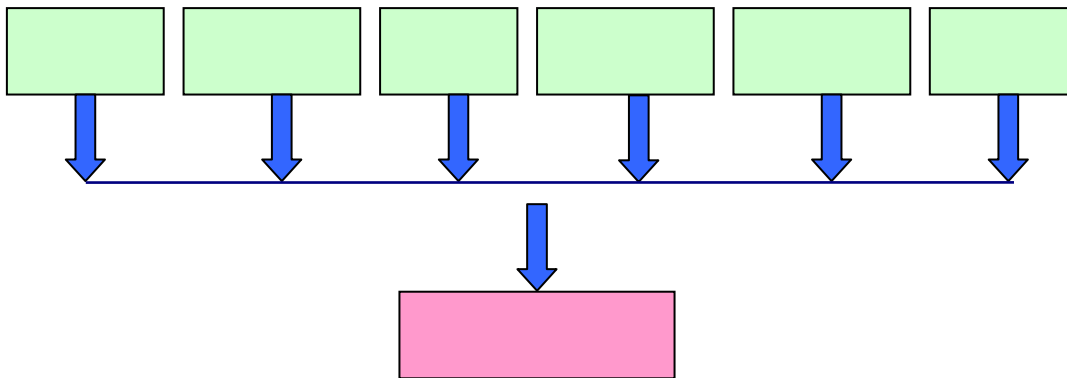




-  
-101

(8 )

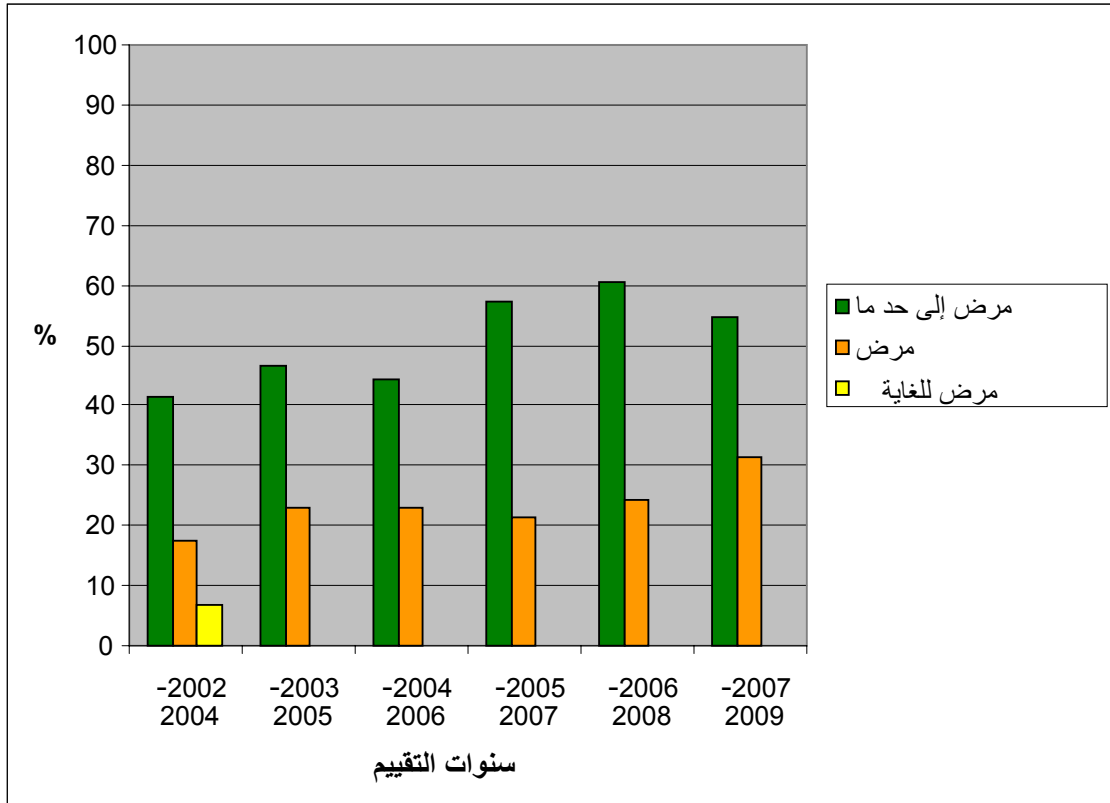
8



(9 ) 2009-2007 2004-2002

-102

2009-2007



2009



-

-103

20

" ) (2012-2010)

.( "

2 -104

2012

2012

-105

:

•

•

•

)

(

.(2005 / )

20

2

( )

2012 ( )	( ) 2009-2008	2009-2007	( )
90	94	97	100
90	87	77	67
75	64	57	45
90	80	86	55
75	75	65	( )40
80	71	95	55 ( )

2 ( )

(2009 )  
2009 / ( )

" 2 (18) 61 10 ( )

25 " (" ) " " ( )

3 -106

-107

( )

)

21

(

-108

" "

\_\_\_\_\_  
" 21  
(2010 )

**(2009-2002)**

---

()

---

7	93	37	30
22	78	6	18
29	71	29	14
32	68	95	22
43	57	70	23

---

( 745 ) ()

2007

-109

22

.4

-110

.4

2010 /

23

.4

2009

.2008

87

65 (2010)  
2008-2002

2009

22

23

4

)

(

---

(2009-2002 )	(2000-1992 )	-2004 )	(2009-2002 )
		(2008)	
		87	83 -
	( )55	( )83	97 -
61			72
			(2007-2003)
70			90
62			61
50			66
48			41 /
55			54
35			40
		(2007-2003)	2009-2002 ( )
		:2009	( )
		.1	(2009 ) 2008-2004
(2009 )		:2009	( )
			.1-3
	(		( )
			( )
	.3		( )
			-

(1) :

(2) ( )

.( )

(2) (1) :



1

(3)

2006 -114

5

.2010 2006

.2006 /

25

24

5

<sup>(1)</sup>(2009-2006)

---



---

1997	2007/2006
1999	2007/2006
1996	2007
1999	2008/2007
2002 2000	2008/2007
2000	2008
2002	2009/2008
2005 2001	2009
2003	2010/2009
2004 2000 1997	2010/2009
2006 2005 1999	2010/2009

---

2010

( )

( )

-115

113-112

)

(

) -116

(

2010

-

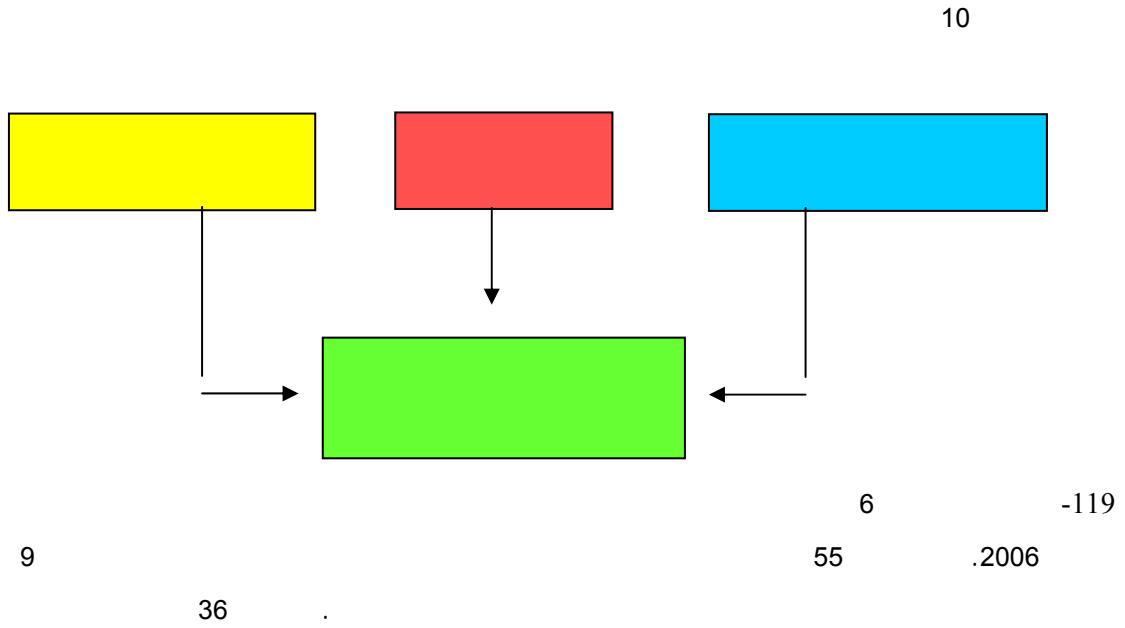
-117

.(10 )

)

-118

(2006



**2009-2006**

0	0	0	9	6
9	18	18	0	5
55	46	18	46	4
<b>64</b>	<b>64</b>	<b>36</b>	<b>55</b>	
36	36	64	27	3
0	0	0	18	2
0	0	0	0	1
<b>36</b>	<b>36</b>	<b>64</b>	<b>45</b>	
11	11	11	11	

-120

(1) :

(2)

-121

"

2006 /

" " "

-122

9

46

-123

45

( )

( )

.( )

.( )

( )

- 2009

-124

-125

.( )

-126

)

(

-127

( )

( )

-128

2010 /

-129

2009-2006

-130

18

64

18

-131

26

-132

2009

-133

( ) / 26  
 ( ) )  
 ( ) )  
 ( ) )

-134

-135

-136

2010 ( ) 2007

2009

2009 /





( 27 )

-142

20

2005

-143

) .(

-144

(2007)

30

<sup>28</sup>2010

2010  
EB 2009/98/R.2

(2009 ) 2010

(2012-2010)

---

<sup>27</sup>  
<sup>28</sup>

( 7) .2010

-145

18

" "

		•
		•
		•
<u>2009</u>		•
		•
		•

19

36	2006	55	64	❖
		2009		❖
	2006		64	❖
				❖
		36	2006	

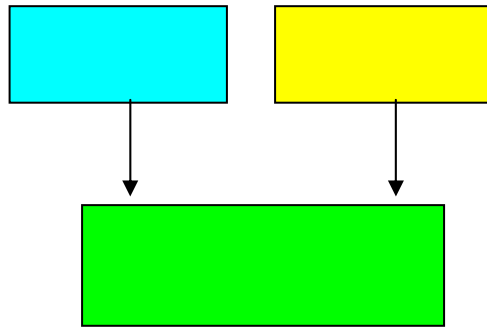


: ( ) -146

29

.(11 )

11



2009 -147

) 2009

(

2009 -148

30 2009

7 -149

7

**2009-2006**

0	0	0	6
50	25	18	5
50	75	64	4
<b>100</b>	<b>100</b>	<b>82</b>	
0	0	18	3
0	0	0	2
0	0	0	1
<b>0</b>	<b>0</b>	<b>18</b>	
4	4	11	

64 : -150

18 . 18

( ) ( )

-151

2002

)

(

-152

.( )

:

18)

-153

<sup>31</sup>(2009-2007

“ ”

/

2009

:

-154

.( )

.2009 2008 2007

<sup>31</sup>

-155

·  
:

-156

( )

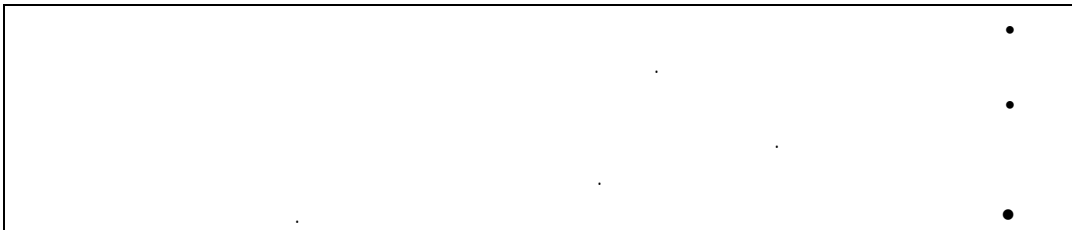
:

-157

20

32

" "



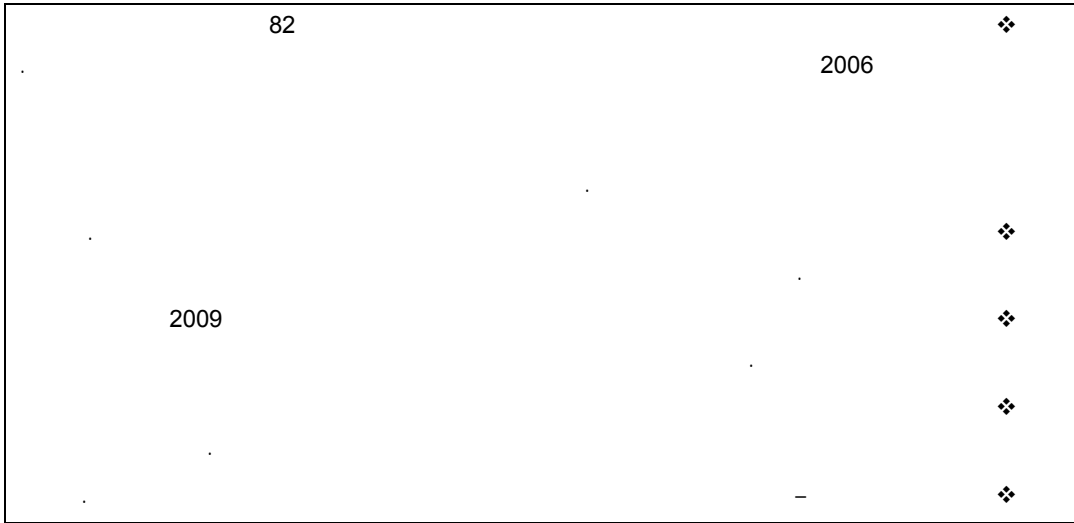
---

32

" "

" )

("2009



- -  
- -158

.(12 )

- -159

)

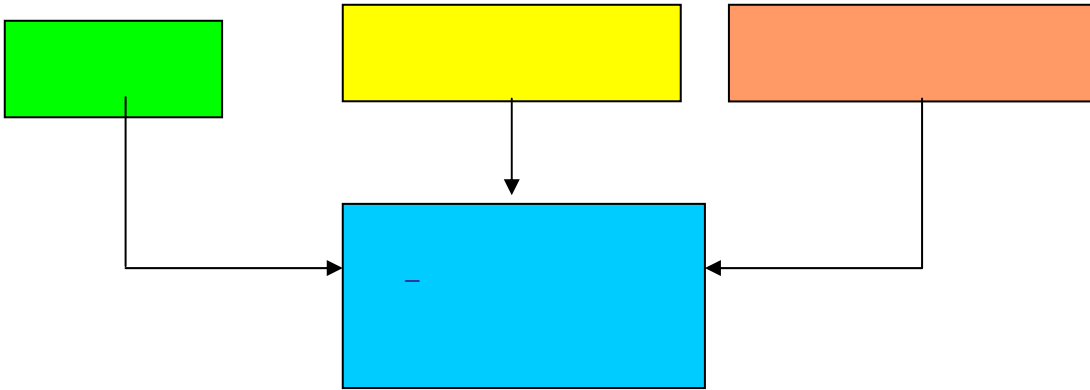
) ( )

.(100-84

(

12

-



( ) 115 -160

) . - ( )  
( ) -161  
)

( )  
( )  
- -162

- 2009 -163

-164



-165

2009

-166

22

-

( )	-	2009	❖
			❖
			❖
			❖

-167

-168

2001-2000

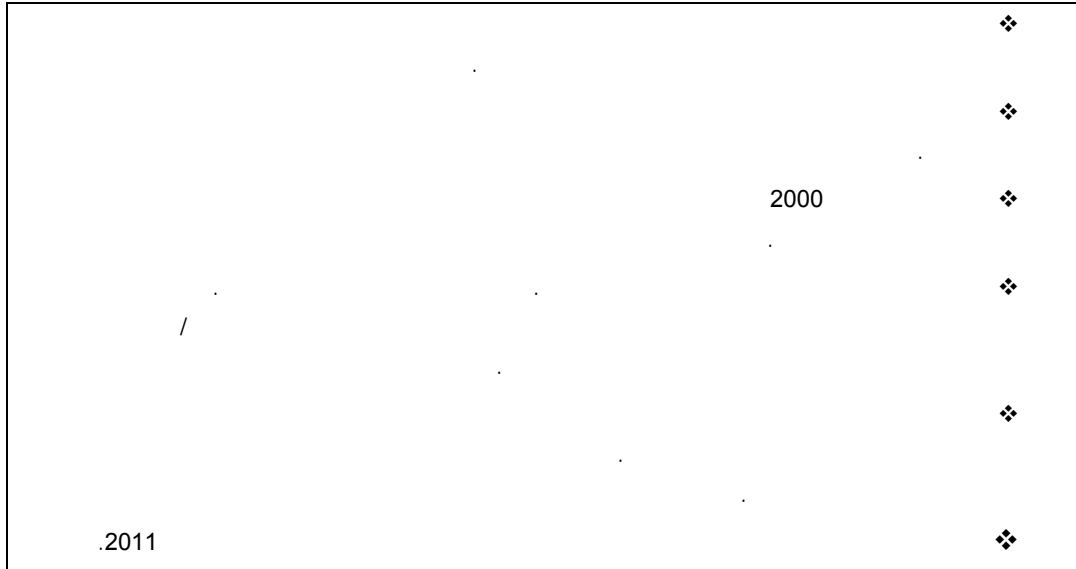


	)	-174
-	(	
	)	
	(	
		-175
	2009	
		-176
	2004	
		-177

23

(1) :

(2)



**2010**

—

2009

/

-178

2010

.2011

-179

-180

(1) :

-181

(2)

(3)

-182

33

34"

-183

" ( ) /

-184

2006 /

) ( ) - (

35

) (

/ /

(2009)

: )

[www.economist.com/research/economics/](http://www.economist.com/research/economics/) :

( )

A-Z

( )

33

34

35

-185

.2009

:

-186

/

-187

" " " "

-188

-189

-190

36

)  
(

-191

-192

(2007)

(2005)

)  
(

-193

24

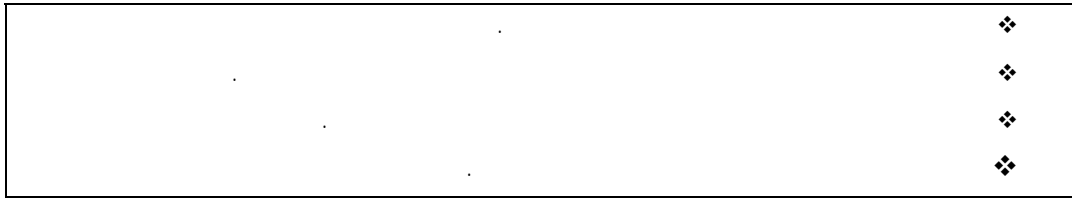
-194

---

36

(2005 )

(2004 )



:

-195

37

38

39

-196

.2011

-197

" "

-198

---

37

38

39





(2010 ) 2009

40

-203

-204

-205

" " : " 42"

40 25 40 43

34 21

30 70

(2009) .2000

" "

8

.2008:6 (2005 )

(2008 ) .

---

41  
42  
43

44

-206

-207

-208

2011

-209

(1) :

(3)

(2)

-1997

---

<sup>44</sup>  
(2008 ) .2006

45

46

**.2010**

-

-

-210

-211

-212

-213

-214

-215

" "

---

1 6 6 1 5

45  
46

—  
—  
:  
(1)

.2002

.( )

—

(2)

2002

45

25

2009-2007

( 30)

2002

(

(3)

42

2009-2007

15

-2002

2011

(4)

50

(5)

2009-2007

" "

(6)

.(2012 - 2010)

-217

2012

2010

2012

2012

:

-218

•

)

(

•

•

-219

2009

-220

-221

:

.2006

-

-222

-223

.2006

-224

( )

(1) :

-225

(2)



-

:

-226

(1)

)

(

2011

(2)

-

(3)

2015-2011

() :

( )

( )

( )

)

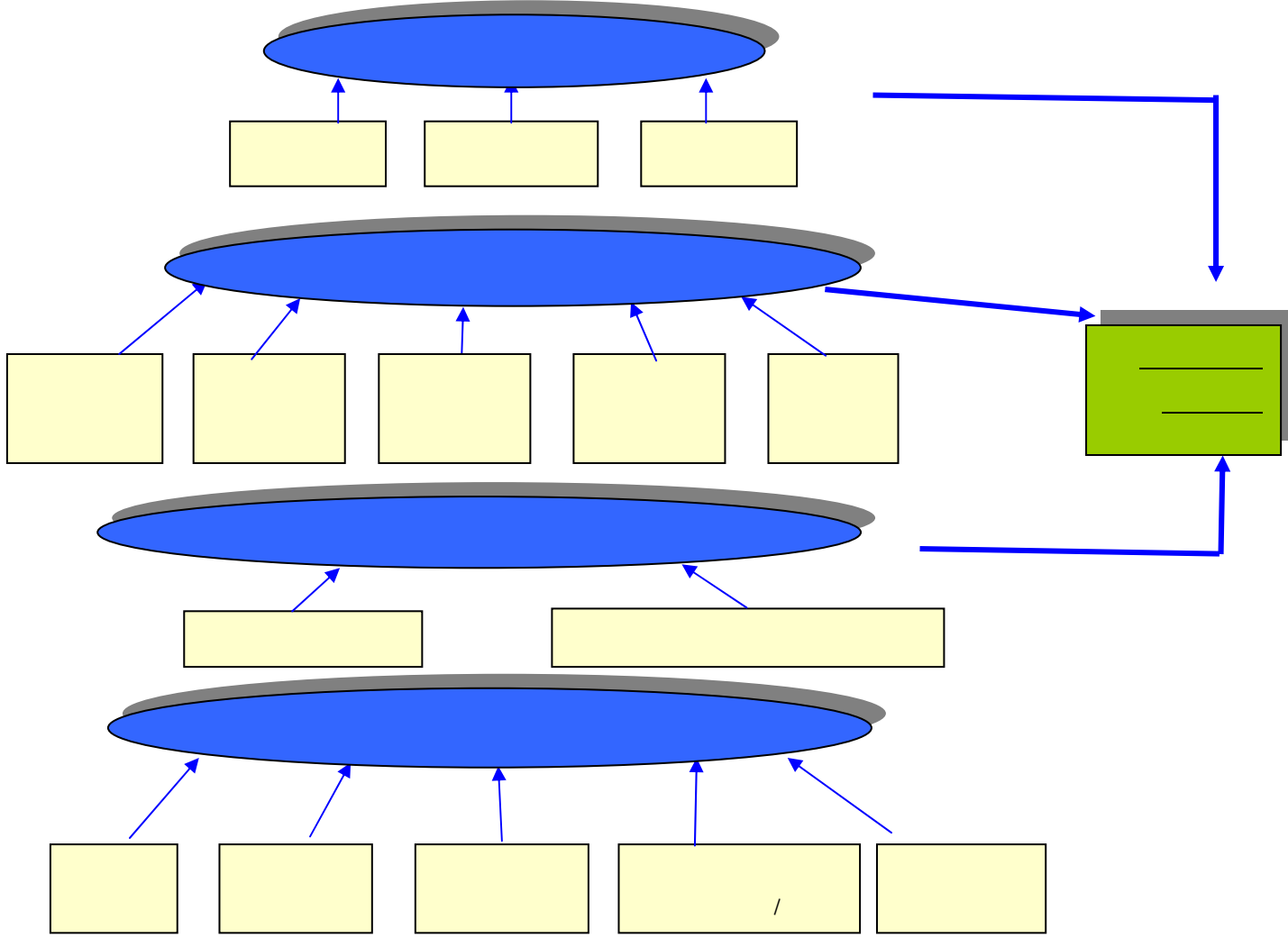
.(

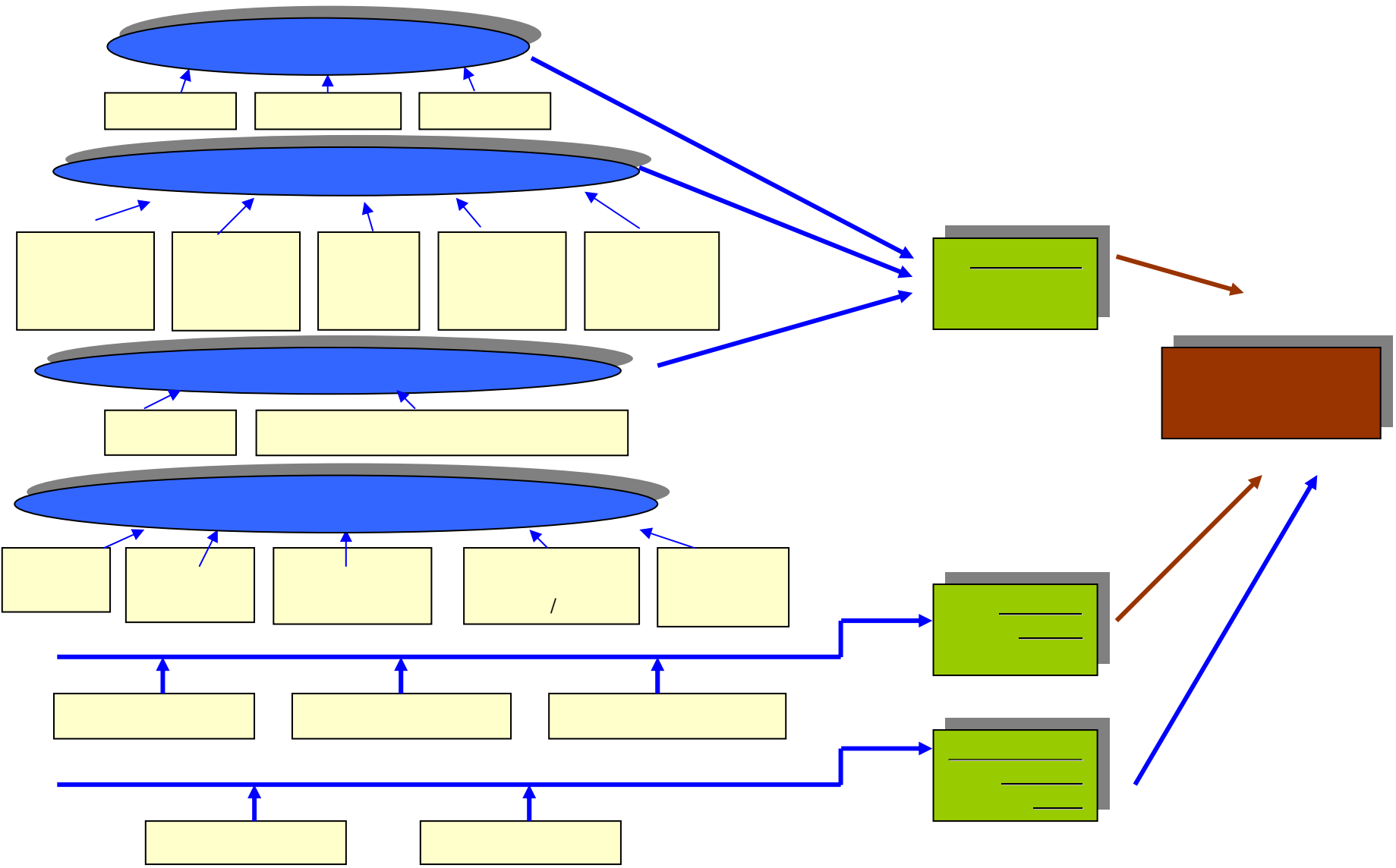
(4)

(5)

.2011

.2012







•

( ) /

) (

•

•

•

•

•

•

•

( ) :

•

•

•

•

•



هي: لعام 2004 . (1)

- ( )
- ( )
- ( )
- ( )

:

- ( )
- ( )
- ( )
- ( )
- ( )

2005 . (2)

:

- ( )
- ( )
- ( )

:

( )

-

( )

2004 . (3)

:

- ( )
- ( )

( )  
( )

والتوجهات المقترحة هي كما يلي:

( )  
( )  
( )  
( )

:

(4)

( )  
( )  
( )

:

( )  
( )

---

---

/

/

(1) :

(2)

(3)

---

240 000

107.3 :

30.4 :

---

25.7 :

88.7 :

---

(1) :

(2)

(3)

---

(1) :

(2)

(3)

(4)

(5)

( )

---

(1) :

(2)

---



-1

-2

1

10

(6 )

(1 )

10

10

1

---

	1	2	3	4	5	6
100	0	20	20	10	40	10
100	10	10	20	20	40	0
100	0	0	50	20	30	0
100	0	20	20	20	40	0

---

1

2

-3

60

(6-4 )

---

(            )

---

<b>(3-1)</b>	<b>(6-4)</b>
40	60
40	60
50	50
40	60

---

**2009**

1

**2009**

- ( )

	0	0	6	29	6
	29	18	29	41	5
	41	41	29	29	4
	<b>71</b>	<b>59</b>	<b>65</b>	<b>100</b>	
	24	29	29	0	3
	6	12	6	0	2
	0	0	0	0	1
	<b>29</b>	<b>41</b>	<b>35</b>	<b>0</b>	

( )

2

- ( )

**2009**

0	7	0	0	6	6	6
38	7	29	25	44	50	5
38	73	43	38	13	13	4
<b>75</b>	<b>87</b>	<b>71</b>	<b>63</b>	<b>63</b>	<b>69</b>	
25	13	14	25	38	31	3
0	0	14	13	0	0	2
0	0	0	0	0	0	1
<b>25</b>	<b>13</b>	<b>29</b>	<b>38</b>	<b>38</b>	<b>31</b>	

3

**2009**

0	0
44	31
50	25
<b>94</b>	<b>56</b>
6	31
0	13
0	0
<b>6</b>	<b>44</b>

4

**2009**

-

0	6	0
12	35	41
47	29	41
<b>59</b>	<b>71</b>	<b>82</b>
29	12	6
12	18	12
0	0	0
<b>41</b>	<b>29</b>	<b>18</b>

5

**2009**

-

0
41
35
<b>76</b>
24
0
0
<b>24</b>

1

2 )  
( )  
( )

/ )  
(

( ) / ( )  
( ) / ( )  
( ) 3 /

1 ، دليل التقييم (2009).

2 8

( )

( )

( )

•  
•  
•  
•  
•  
•

( ) / ( )

( )

- / -

•  
•  
•  
•  
•

( )

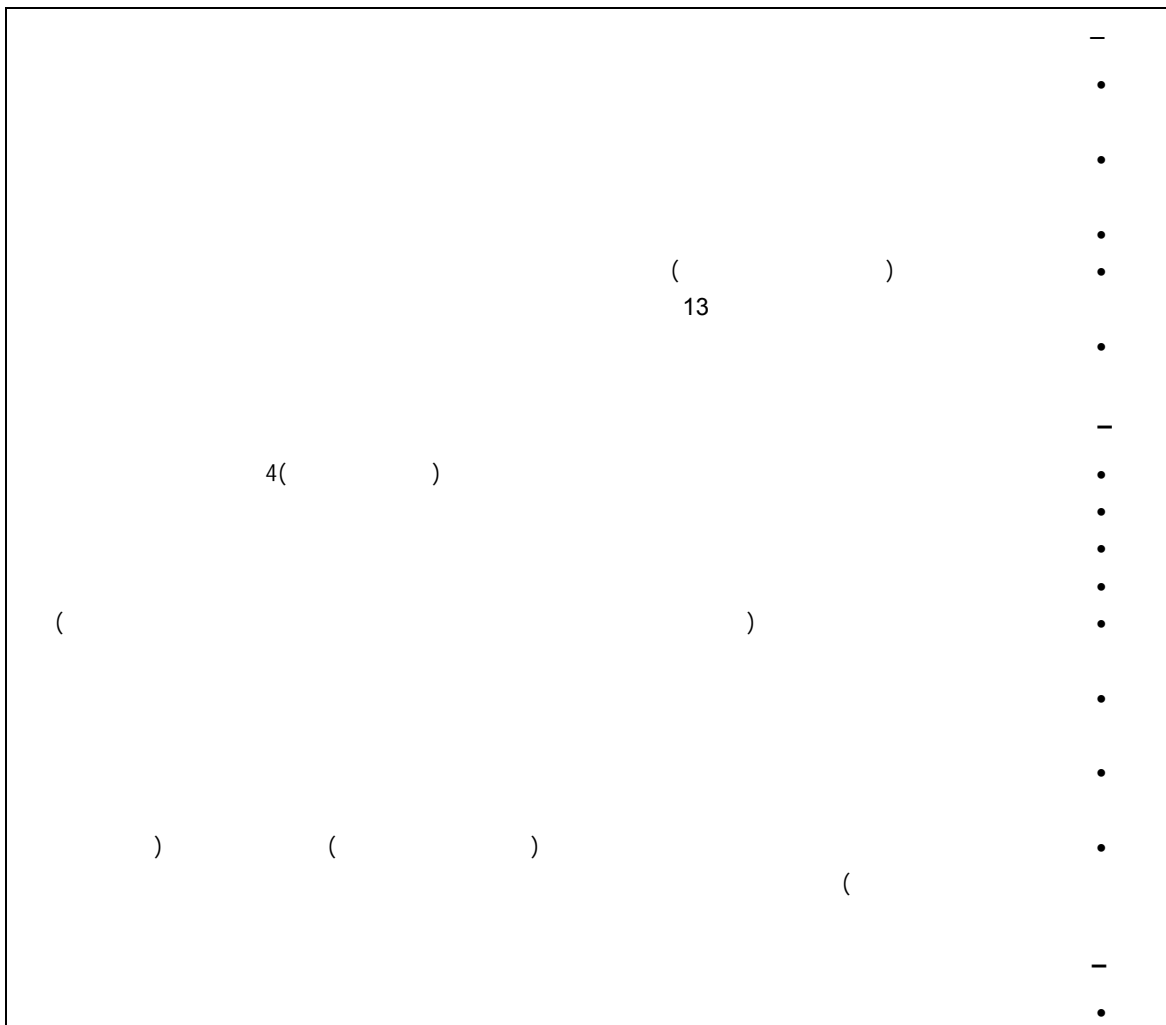
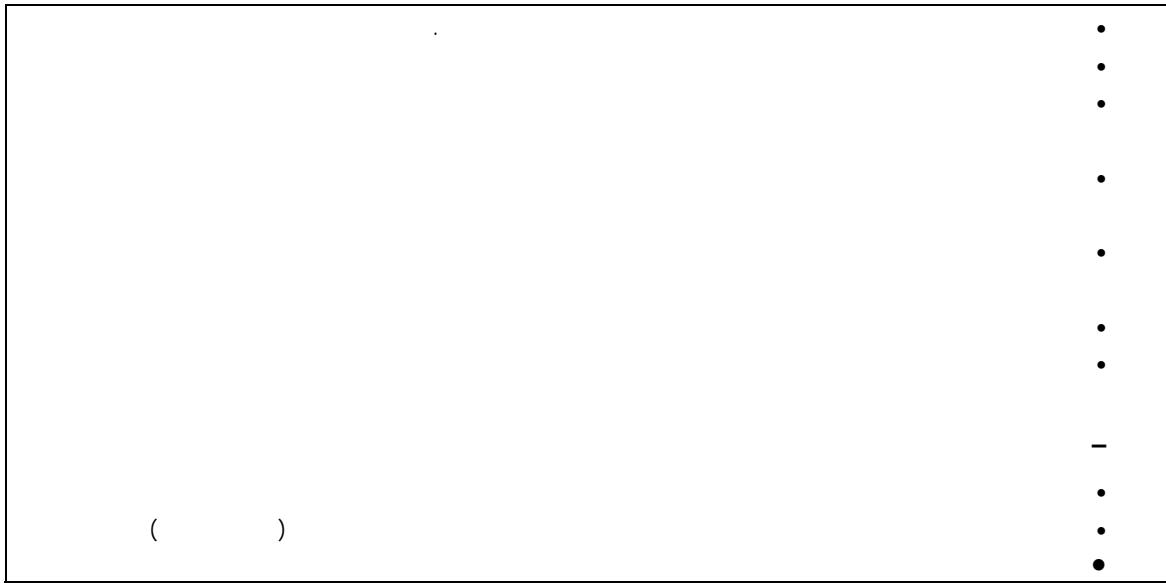
( ) ( )

( )

•  
•  
•  
•  
•  
•  
•  
•  
•  
•

		•
		•
		•
		•
		•
( )	( )	•
		•
	/	•
	( )	•
		•
		•
( )		•
)		•
	(	•
		•
		•
		•
		•
		•
		•
		•
		•

		-
		•
		•
)		•
	(	/
		•
		•
		-



( )



) ( )  
(2006 /

- 
- 
- 
- 
- 
- 
- 
- 
- 
- 

(2006 / ) 5

- 
- 
- 
-