



Investing in rural people

IFAD14

Results accountability & architecture

First consultation
session

7-8 May, Rome, Italy



IFAD14

IFAD14 commitments

Guiding principles

IFAD14



Guiding principles



Reflection of agreements

- Commitments, monitorable actions and the RMF reflect what Members agree **throughout the consultation**.
- Today's proposals are a **starting point**, not a final decision.



Strategic focus and selectivity

- Focus and selectivity over comprehensiveness.
- **Included** if new or further efforts needed.
- **Removed** if already achieved or institutionalized.



Level of ambition

- The level of replenishment determines **what is possible**.
- Higher ambition requires **adequate** resources, capacity, and **realistic** budget assumptions.
- Over-promising erodes **credibility** with Member States.

Lessons

Four evidence streams informing IFAD14

IFAD14



IFAD12 impact assessments

Align indicators with what we finance

- Depth over breadth
- Align interventions with results we aim for
- Link 'adaptation' to productivity-linked resilience
- Measure nutrition through what IFAD funds

CLE IFAD11/12

Fewer commitments, sharper focus

- Limited number of commitments
- Prioritize strategic focus
- Performance-driven budget
- Optimized balance sheet

IFAD13 implementation & MTR

Build on strengths – push where gaps remain

- Markets, employment, resilience validated by evidence.
- Strong delivery in year 1
- Results gaps require greater focus
- Transformative results

Peer benchmarking

Alignment with MDB best practices

- Streamline commitments
- MDB-harmonized private sector reporting
- IOE independent ratings at completion
- Rolling 3-year budget frameworks

Lessons

Four evidence streams informing IFAD14

IFAD14



IFAD12 impact assessments

Align indicators with what we finance

- Depth over breadth
- Align interventions with results we aim for
- Link 'adaptation' to productivity-linked resilience
- Measure nutrition through what IFAD funds



CLE IFAD11/12

Fewer commitments, sharper focus

- Limited number of commitments
- Prioritize strategic focus
- Performance-driven budget
- Optimized balance sheet

IFAD13 implementation & MTR

Build on strengths – push where gaps remain

- Markets, employment, resilience validated by evidence.
- Strong delivery in year 1
- Results gaps require greater focus
- Transformative results

Peer benchmarking

Alignment with MDB best practices

- Streamline commitments
- MDB-harmonized private sector reporting
- IOE independent ratings at completion
- Rolling 3-year budget frameworks

Lessons

Four evidence streams informing IFAD14

IFAD14



IFAD12 impact assessments

Align indicators with what we finance

- Depth over breadth
- Align interventions with results we aim for
- Link 'adaptation' to productivity-linked resilience
- Measure nutrition through what IFAD funds



CLE IFAD11/12

Fewer commitments, sharper focus

- Limited number of commitments
- Prioritize strategic focus
- Performance-driven budget
- Optimized balance sheet



IFAD13 implementation & MTR

Build on strengths – push where gaps remain

- Markets, employment, resilience validated by evidence
- Strong delivery in year 1
- Results gaps require greater focus
- Transformative results

Peer benchmarking

Alignment with MDB best practices

- Streamline commitments
- MDB-harmonized private sector reporting
- IOE independent ratings at completion
- Rolling 3-year budget frameworks

Lessons

Four evidence streams informing IFAD14

IFAD14



IFAD12 impact assessments

Align indicators with what we finance

- Depth over breadth
- Align interventions with results we aim for
- Link 'adaptation' to productivity-linked resilience
- Measure nutrition through what IFAD funds



CLE IFAD11/12

Fewer commitments, sharper focus

- Limited number of commitments
- Prioritize strategic focus
- Performance-driven budget
- Optimized balance sheet



IFAD13 implementation & MTR

Build on strengths – push where gaps remain

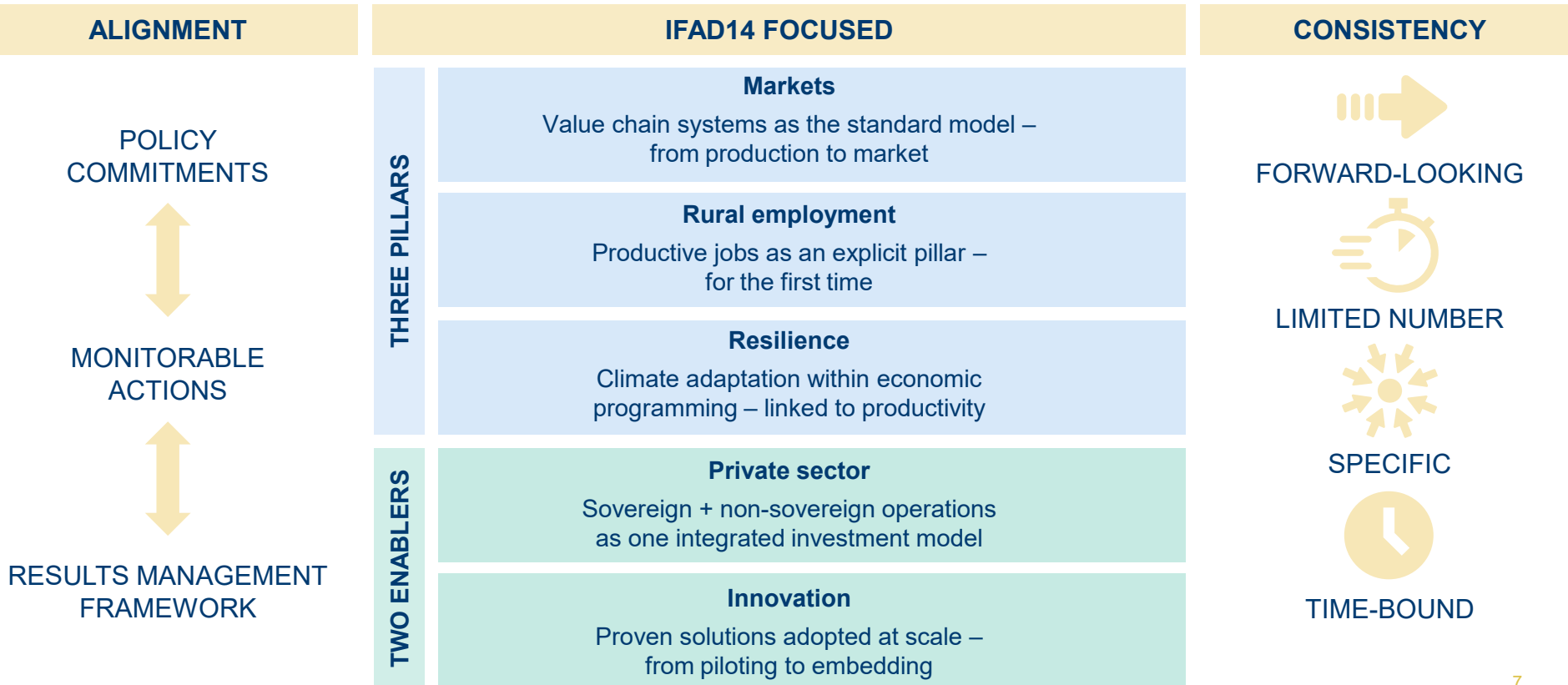
- Markets, employment, resilience validated by evidence.
- Strong delivery in year 1
- Results gaps require greater focus
- Transformative results



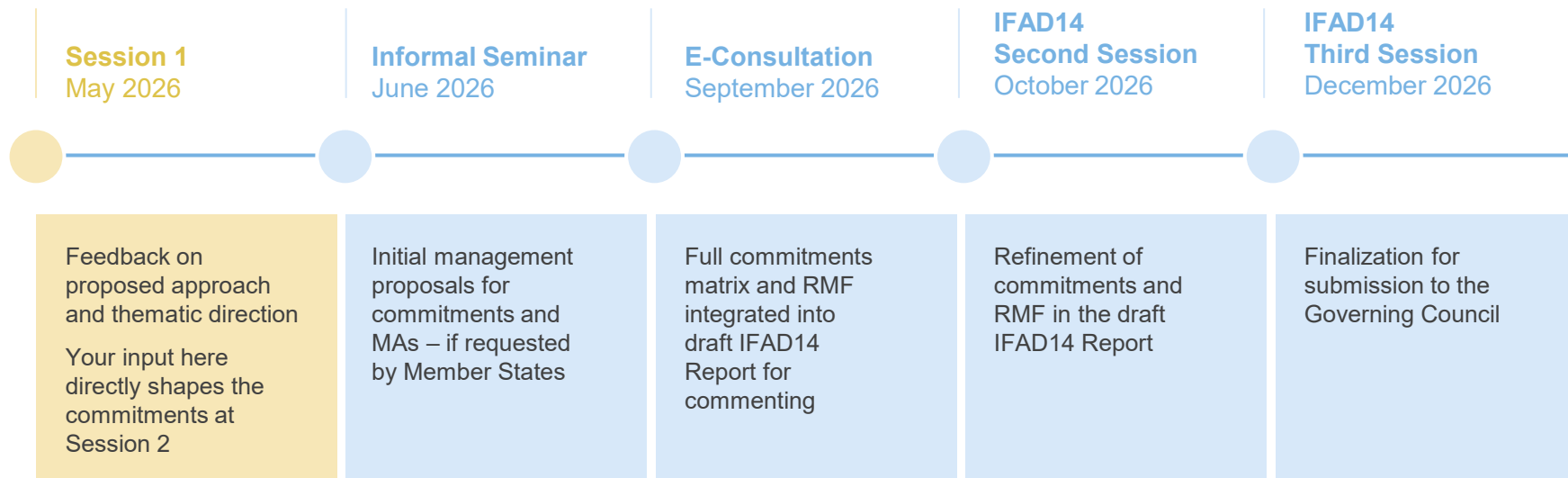
Peer benchmarking

Alignment with MDB best practices

- Streamline commitments
- MDB-harmonized private sector reporting
- IOE independent ratings at completion
- Rolling 3-year budget frameworks



Next steps



IFAD14