

# IFAD13: Investing in Rural Prosperity and Resilience for a Food-Secure Future

Fourth Session of the consultation of the Thirteenth Replenishment

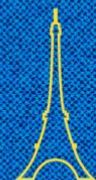
14 December 2023



# IFAD13

# REPLENISHMENT

FOURTH CONSULTATION  
CO-HOSTED BY **ANGOLA AND FRANCE**



# Now is the time to act and IFAD is ready

2023

2025

IFAD13

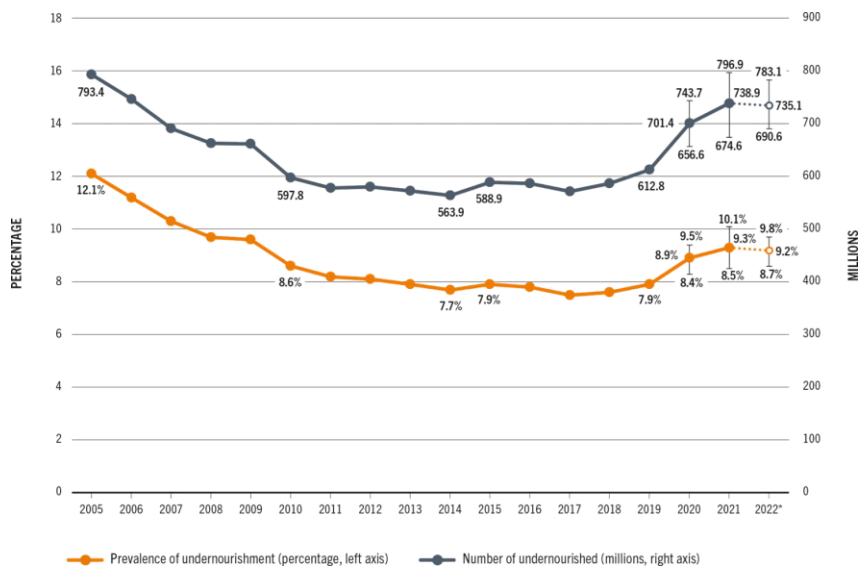
2027



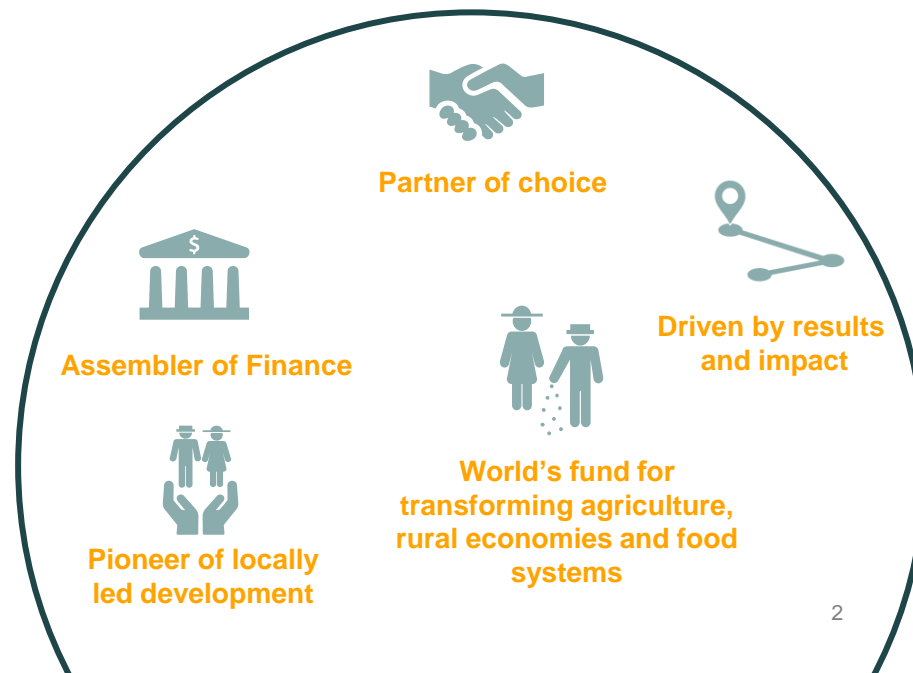
2033



⇒ = IFAD13 project durations based on average length of 6 years



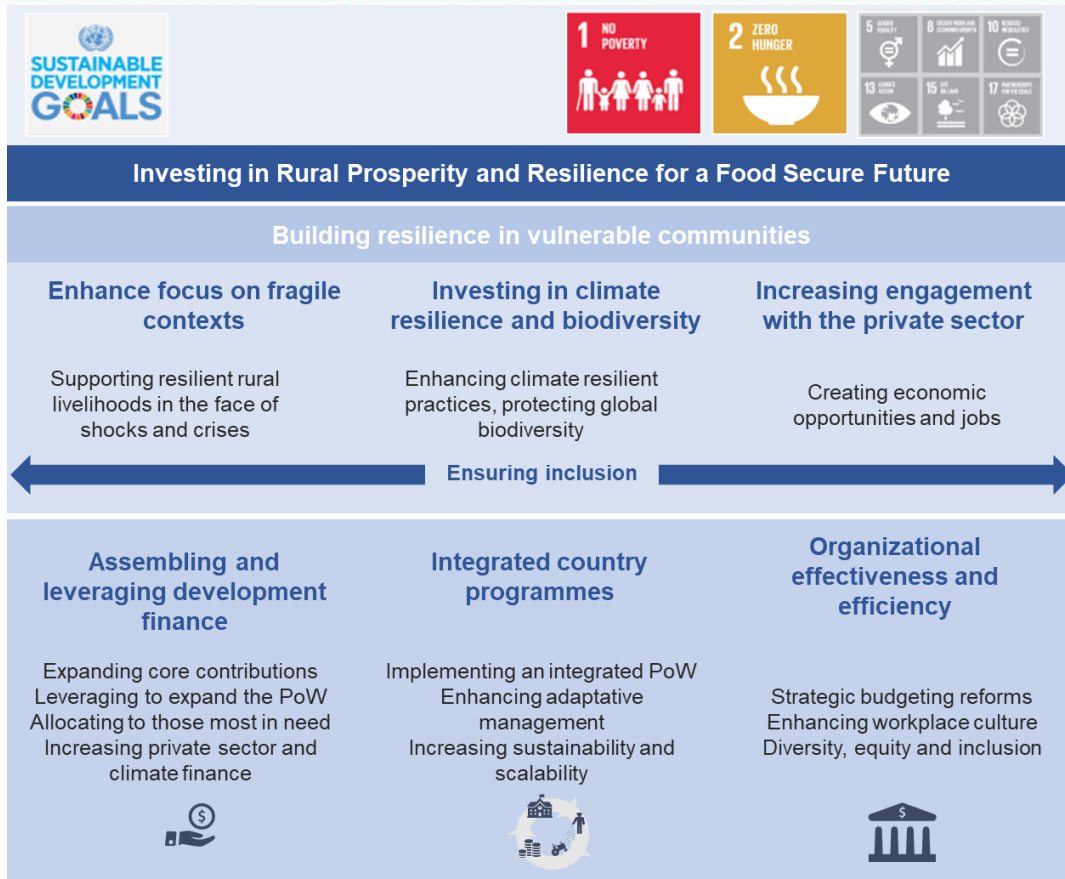
NOTES: \* Projections based on nowcasts for 2022 are illustrated by dotted lines. Bars show lower and upper bounds of the estimated range. SOURCE: FAO, 2023. FAOSTAT: Suite of Food Security Indicators. In: FAO. [Cited 12 July 2023].





# IFAD13: Invest in a Food Secure Future

- IFAD13 offers an effective framework for investing in a rural prosperity and resilience for a **food secure future**
- Focus on **IFAD's core mandate**, including through empowering women and youth, and improving food security and nutrition
- Focus on addressing the three interconnected challenges of **increasing fragility, climate change, and inadequate private sector investment**



# Priority areas: Responding to global challenges and opportunities

## Fragility



## Climate & Biodiversity



Raise climate finance target from 40% to **at least 45%**



New policy on climate, environment and biodiversity, **and roadmap for Paris alignment**



Create ACCs as channel for 100% climate finance contributions



Integrated programmatic approach to climate operations

## Private Sector



**I. Enabling**  
De-risking investments



**II. Catalyzing**  
PoLG and PSFP instruments



**III. Assembling**  
PSFP instruments and convening power

# Leader on inclusivity and locally-led development

Strengthen **youth employment** and **youth participation** in decision making

**Targeting for nutrition** and promoting diversified local food production, and consumption

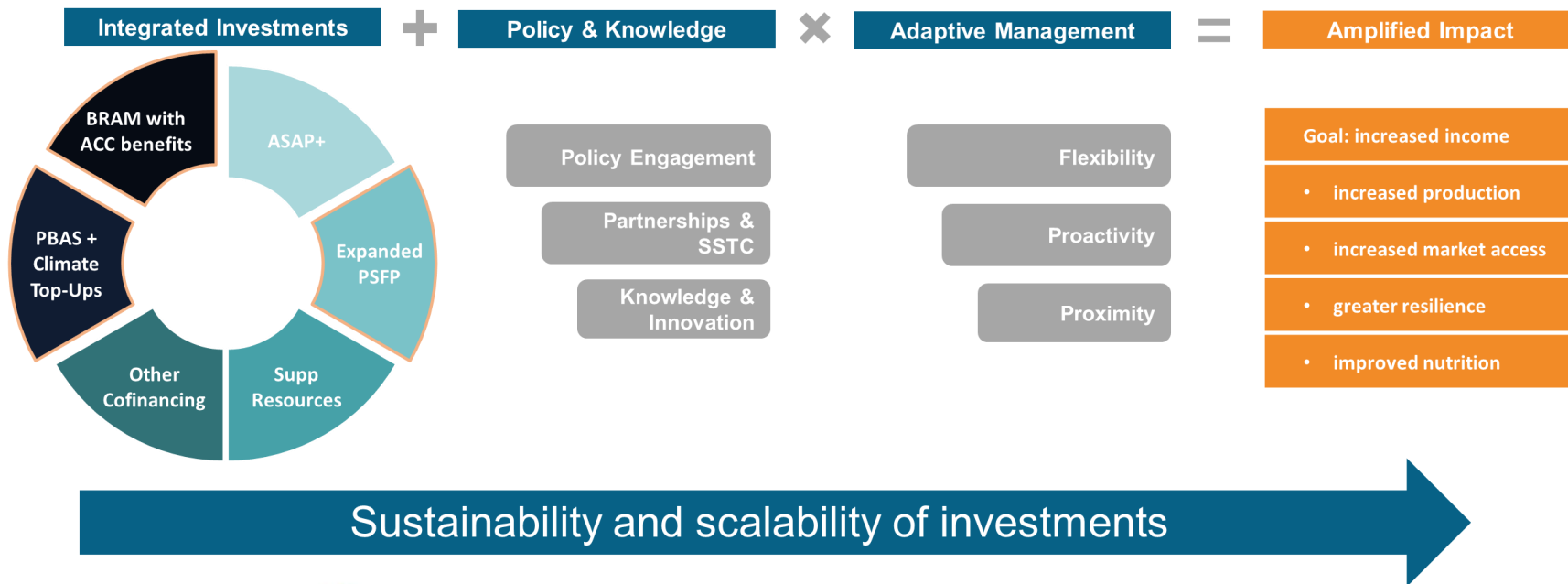
Intensifying **efforts on gender** to ensure **equal access** to assets, services, employment and markets

**People-centred approach** focused on Indigenous Peoples, persons with disabilities and other marginalized groups

Working with **community-based organizations** to promote inclusive development

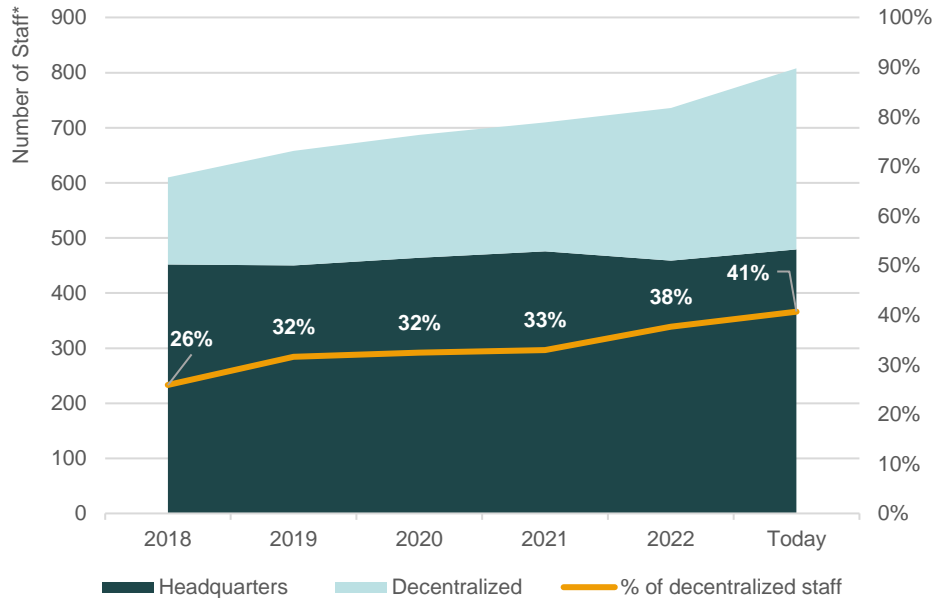


# Integrated country programmes for impact



# Organizational effectiveness and efficiency

## IFAD's workforce is growing and increasingly decentralized



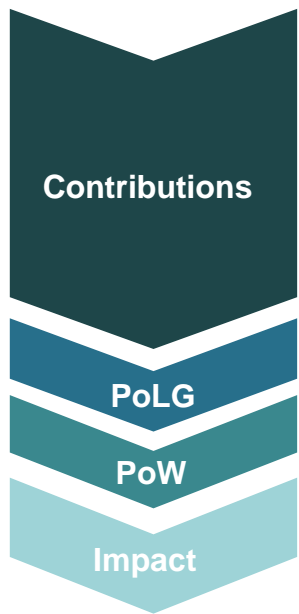
## IFAD will continue to strengthen effectiveness and efficiency

- IFAD13 **consolidates** and **builds on** recent reforms and initiatives (e.g. project efficiency action plan)
- Focus on **operational delivery and project efficiency**
- Optimizing **resource use and prioritization** and streamlining budgeting
- Enhancing **capacity and workplace culture**

\*Includes all categories of Fixed-Term Staff, including fixed-term, continuing, and indefinite appointments; JPOs, staff on loan to IFAD and co-terminus contracts. (ILC staff are excluded). Data recorded as at 1 January of each year.



# IFAD13 Proposed scenario



(US\$ million, Number of beneficiaries in million)

	IFAD 12	B
<b>Total new replenishment financing</b>	<b>1 350</b>	<b>2 005</b>
Core Contributions	1 257	1 655
Additional Climate Contributions		150
Concessional Partner Loans	93	200
<b>IFAD13 replenishment target</b>		<b>1 875</b>
<b>Total PoLG</b>	<b>3 350</b>	<b>3 640</b>
<b>Total PoW</b>	<b>8 375</b>	<b>9 880</b>
<b>Goal: Millions of people with increased income</b>	<b>86 - 93</b>	<b>101</b>

Ambitious call to mobilize

**US\$2 billion in new funding,**

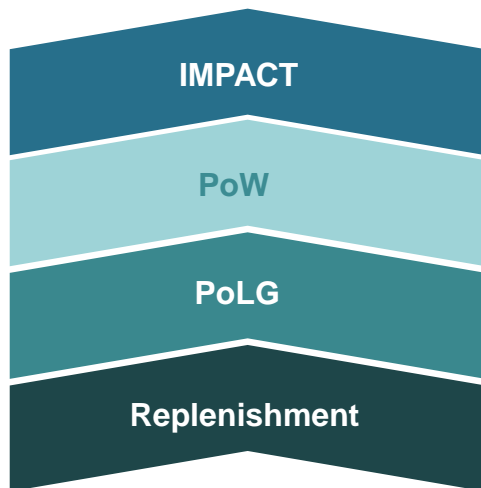
supporting a US\$10 billion programme of work, impacting over

**100 million rural people**







# From commitments to impact

Ambition of  
**100 million\*** people with  
increased income



\*Impact estimates are forecasts derived from assessments of IFAD's portfolio during IFAD11

## IFAD13 impact simulation

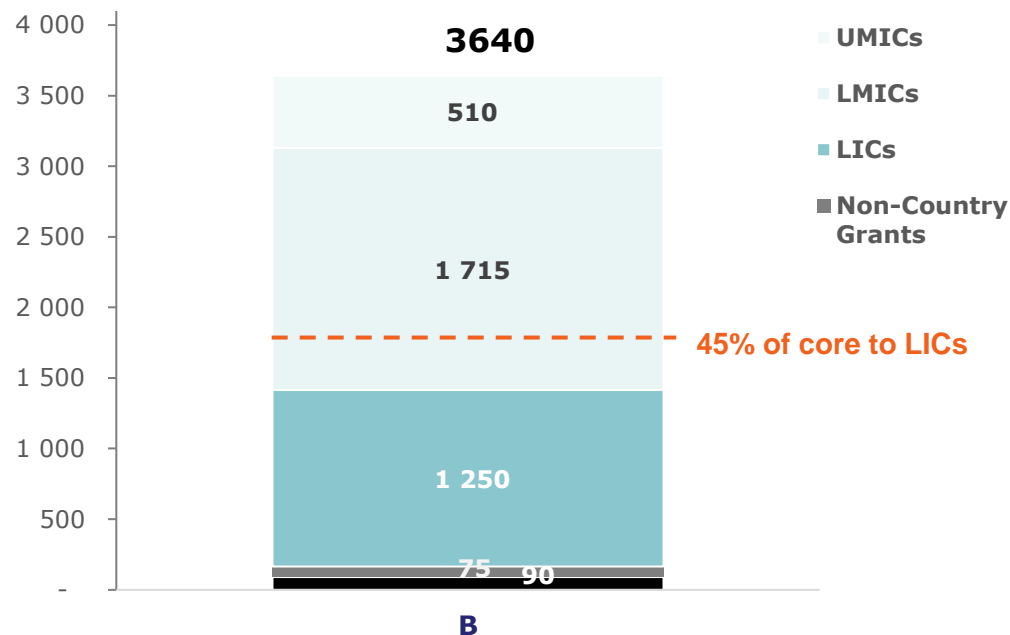
	Proposed B
PoW (US\$ million)	9 880
Impact (number of people [in millions] with)	
 Increased income / positive economic mobility (SDG 2.3 & 1.2)	101
 Increased production (SDG 2.3)	82
 Increased market access (SDG 2.3)	84
 Greater resilience (SDG 1.5)	50

# Ensuring universality and maximising resources to those most in need

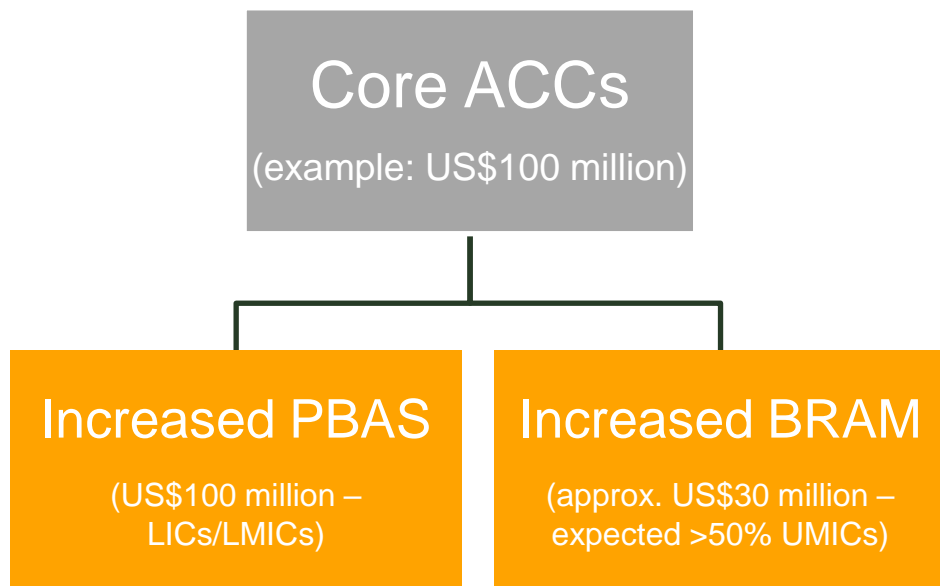
**100%** of core resources will be channelled to LICs and LMICs  
LICs will receive at least **45%** of core resources

At least **11% and up to 20%** of total resources will be allocated to UMICs through BRAM

- **60% of core** resources allocated to **Africa, including 55% to sub-Saharan Africa**
- **At least 30% of core** resources to **FCAS**



# New instrument to boost climate impact



## Key features:

- Fully voluntary core contribution
- Boosts **core resources and IFAD equity**
- Increases both **PBAS and BRAM** (\$100m in ACCs increases BRAM by approx. \$30m)

## Three safeguards for ACCs:

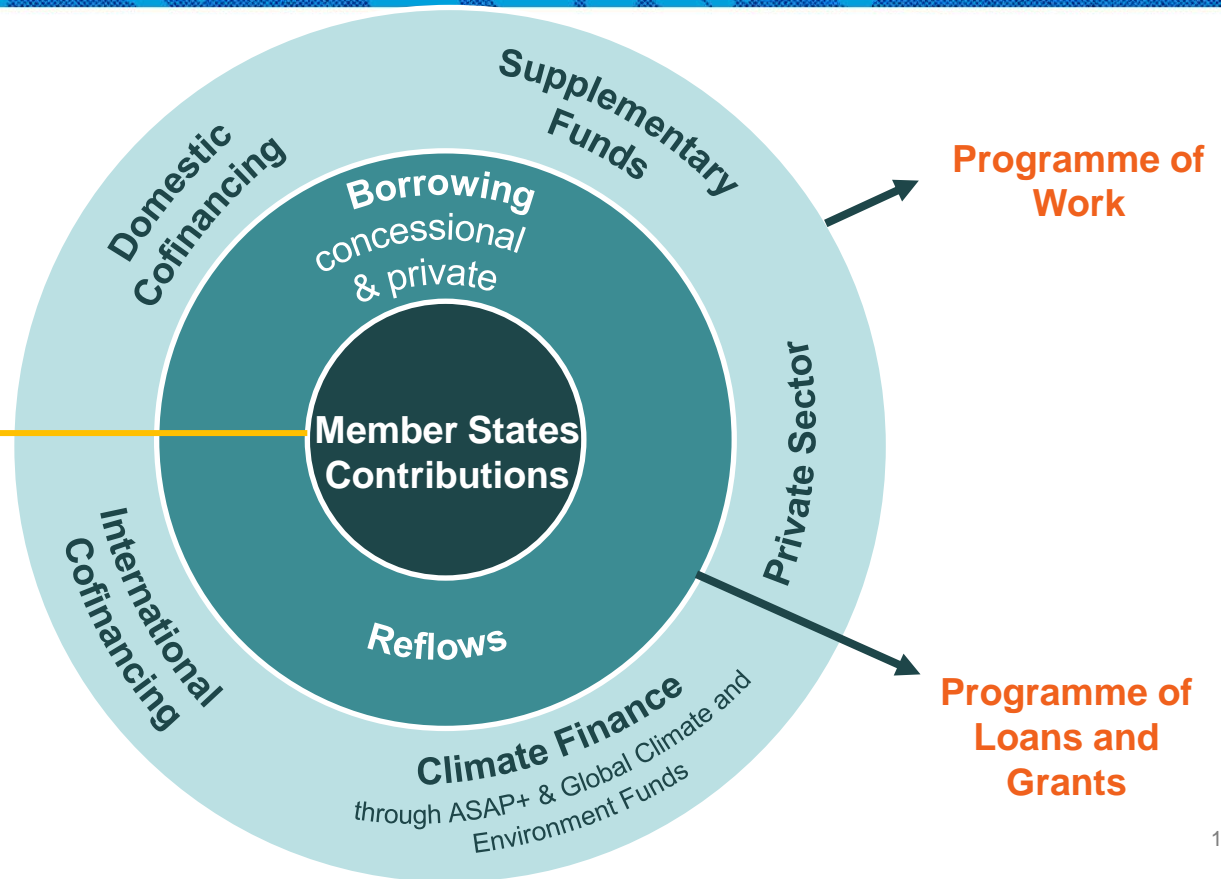
1. ACCs only receive **50% of the voting rights** of core contributions
2. Number of IFAD13 votes created for ACCs **capped at 50 per cent of total amount of votes created** for other additional contributions
3. IFAD13 Commitment to undertake a **review of ACC lessons learned** as part of the IFAD13 midterm review and annually by **EB/relevant bodies**

# Core funding enables expanded impact

**Crowding-in** public and private resources through and **integrated programme of work (PoW)** to maximise impact for **LICs & LMICs** and **ensuring universality**

## IFAD13 core funding:

- Core Replenishment Contributions
- Concessional Partner Loans grant element
- Core Additional Climate Contributions





# Ambition for impact

**Invest today** to end poverty,  
hunger and limit damages from  
climate change.

IFAD's ambition is to impact over  
**100 million rural people.**



*Women sift rice, IFAD project Madagascar*

Thank you

IFAD13

REPLENISHMENT

FOURTH CONSULTATION  
CO-HOSTED BY ANGOLA AND FRANCE

