

IFAD13: Building Rural Resilience for a Food Secure Future

Third Session of the Consultation
on the Thirteenth Replenishment

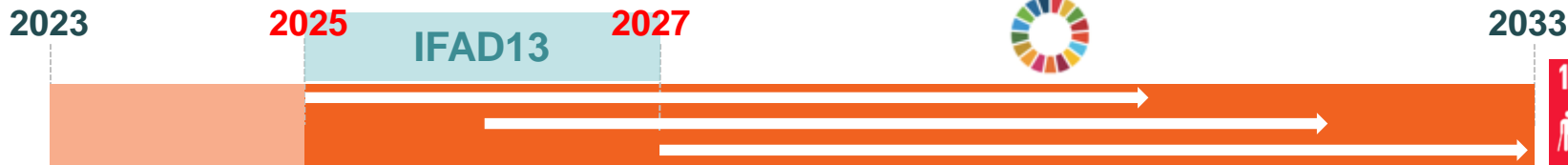
2-3 November 2023

IFAD13 REPLENISHMENT

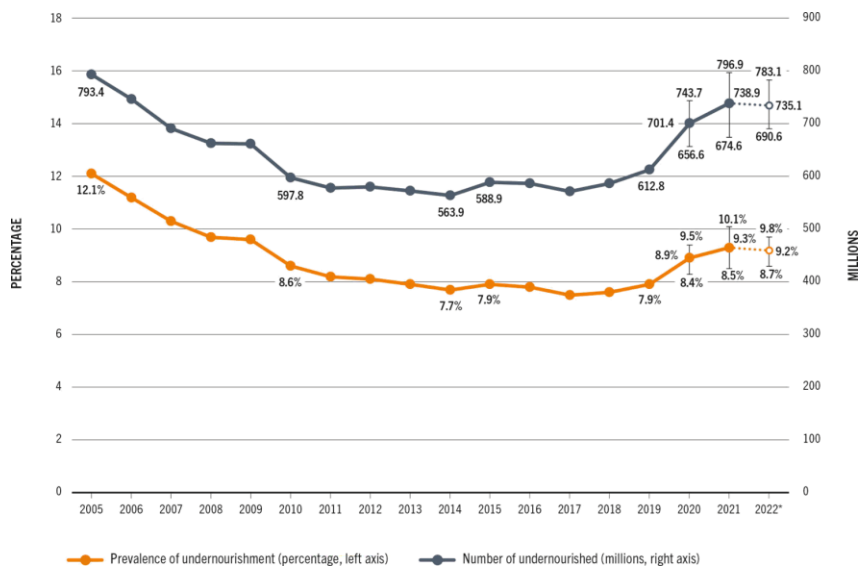
 IFAD | FIDA



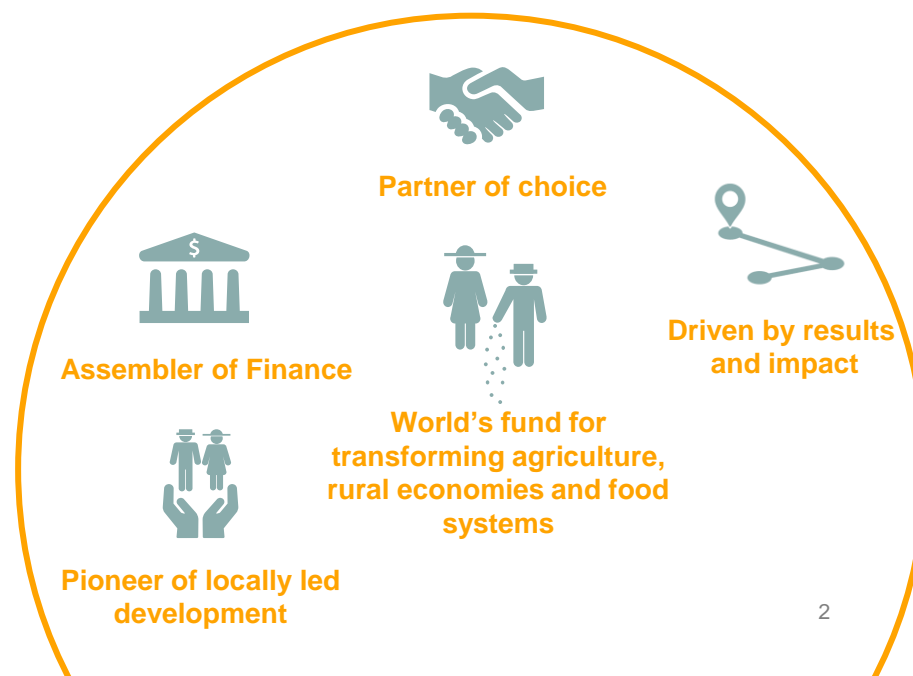
Now is the time to act and IFAD is ready



➔ = IFAD13 project durations based on average length of 6 years

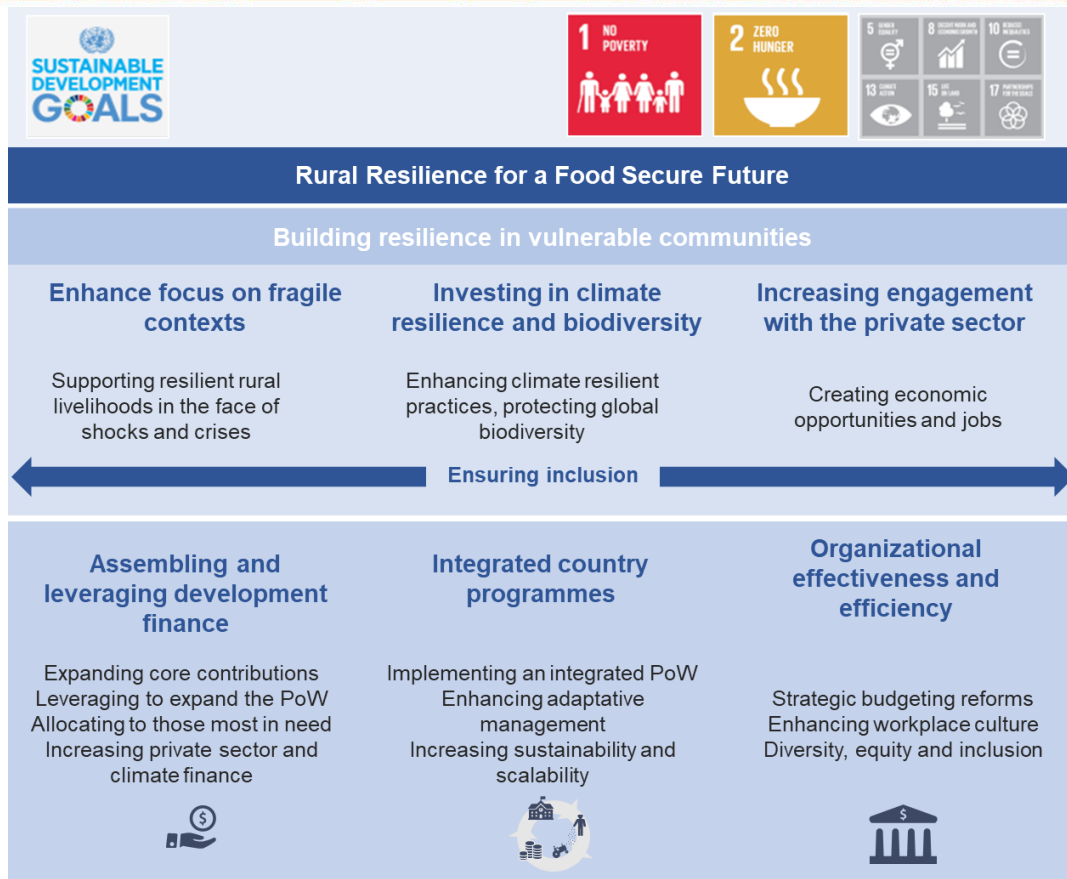


NOTES: * Projections based on nowcasts for 2022 are illustrated by dotted lines. Bars show lower and upper bounds of the estimated range. SOURCE: FAO, 2023; FAOSTAT; Suite of Food Security Indicators. In: FAO. [Cited 12 July 2023].



IFAD13: Invest in a Food Secure Future

- IFAD13 offers an **effective framework for investing in rural resilience for a food secure future**
- Focus on **IFAD's core mandate, including through empowering women and youth, and improving food security and nutrition**
- Focused on addressing three key interconnected challenges of **increasing fragility, climate change, and inadequate private sector investment**



Priority areas to respond to global challenges and opportunities

Fragility



Climate & Biodiversity



Raise climate finance target from 40% to **at least 45%**



New policy on climate, environment and biodiversity, **and roadmap for Paris alignment**



Create ACCs as channel for 100% climate finance contributions



Integrated programmatic approach to climate operations

Private Sector



I. Enabling
De-risking investments



II. Catalyzing
PoLG and PSFP instruments



III. Assembling
PSFP instruments and convening power

Inclusivity: Leave no one behind

Targeting for nutrition and promoting diversified local food production, and consumption

Strengthen **youth employment** and **youth participation** in decision making

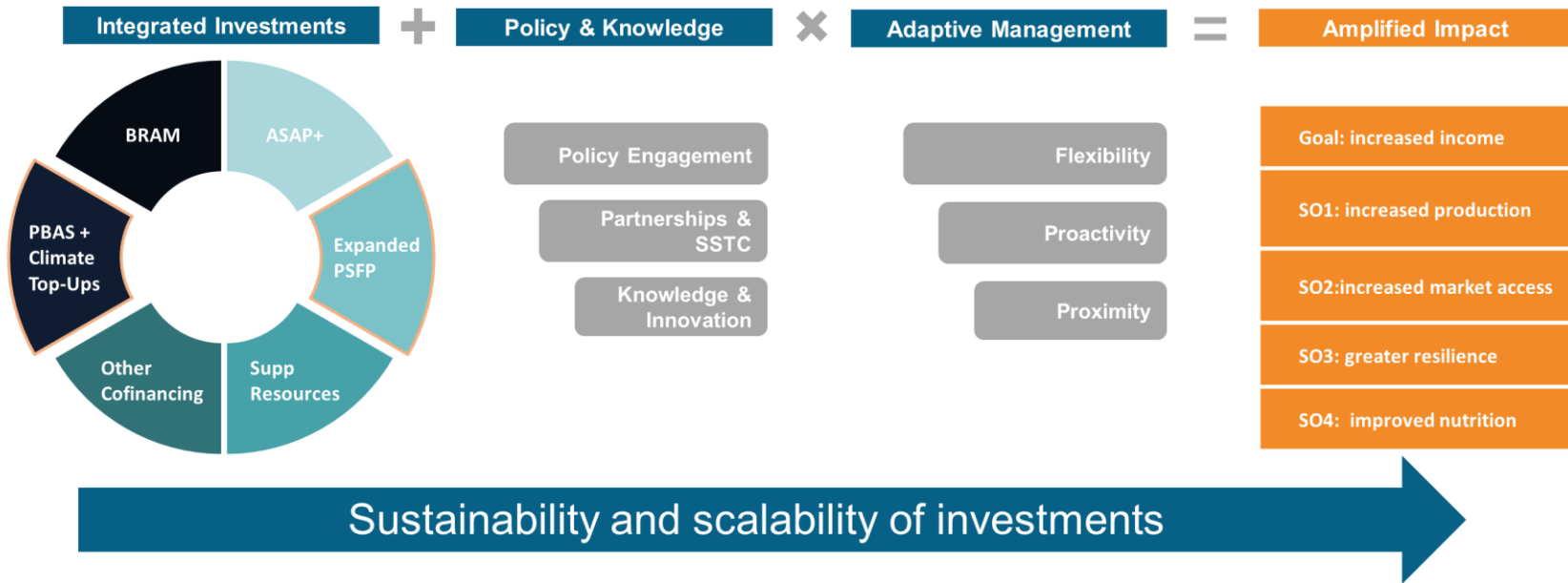
People-centred approach focused on Indigenous Peoples, persons with disabilities and other marginalized groups



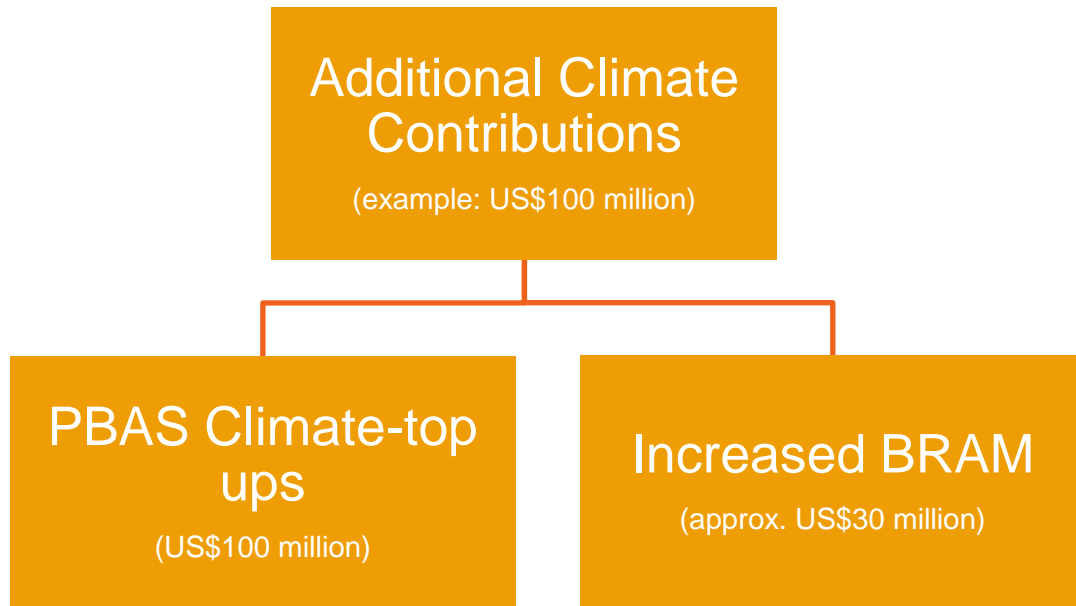
Intensifying **efforts on gender to ensure equal access** to assets, services, employment and markets

Working with **community-based organizations** to promote inclusive development

Integrated country programmes for impact



New instrument to boost climate impact

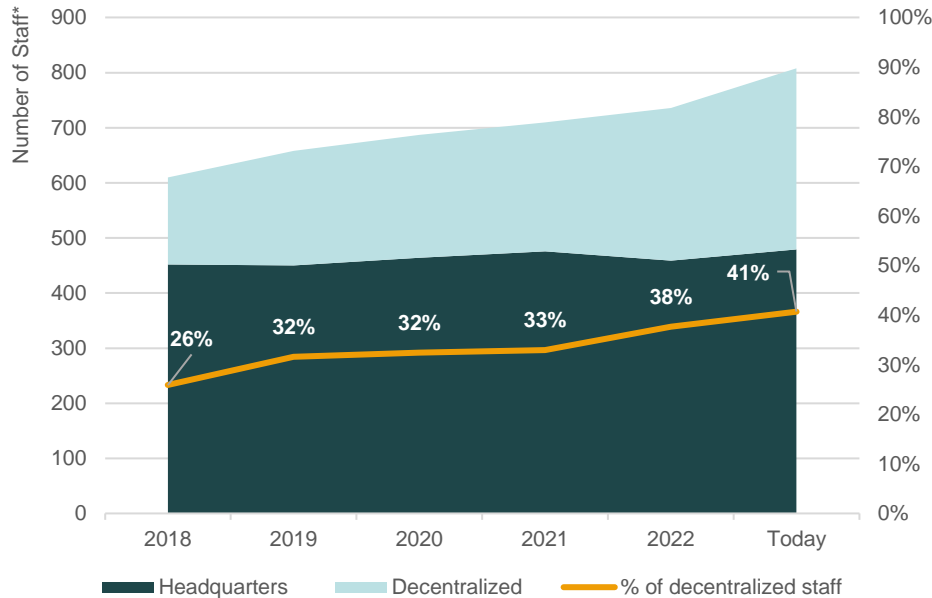


Key Features:

- **Fully voluntary** form of additional replenishment contribution
- **Boost core resources and IFAD equity**
- Increase **PBAS and BRAM** funding **Fully integrated** in IFAD projects and EB approval processes
- Normal lending terms applied
- To manage substitution risk contributors to make **core pledge equal their last replenishment contribution**, in order to receive **50% voting rights for ACCs**

Organizational effectiveness and efficiency

IFAD's workforce is growing and increasingly decentralized



IFAD will continue to strengthen effectiveness and efficiency

- IFAD13 **consolidates** and **builds on** recent reforms and initiatives (e.g. project efficiency action plan)
- Focus on **operational delivery and project efficiency**
- Optimizing **resource use and prioritization** and streamlining budgeting
- Enhancing **capacity and workplace culture**

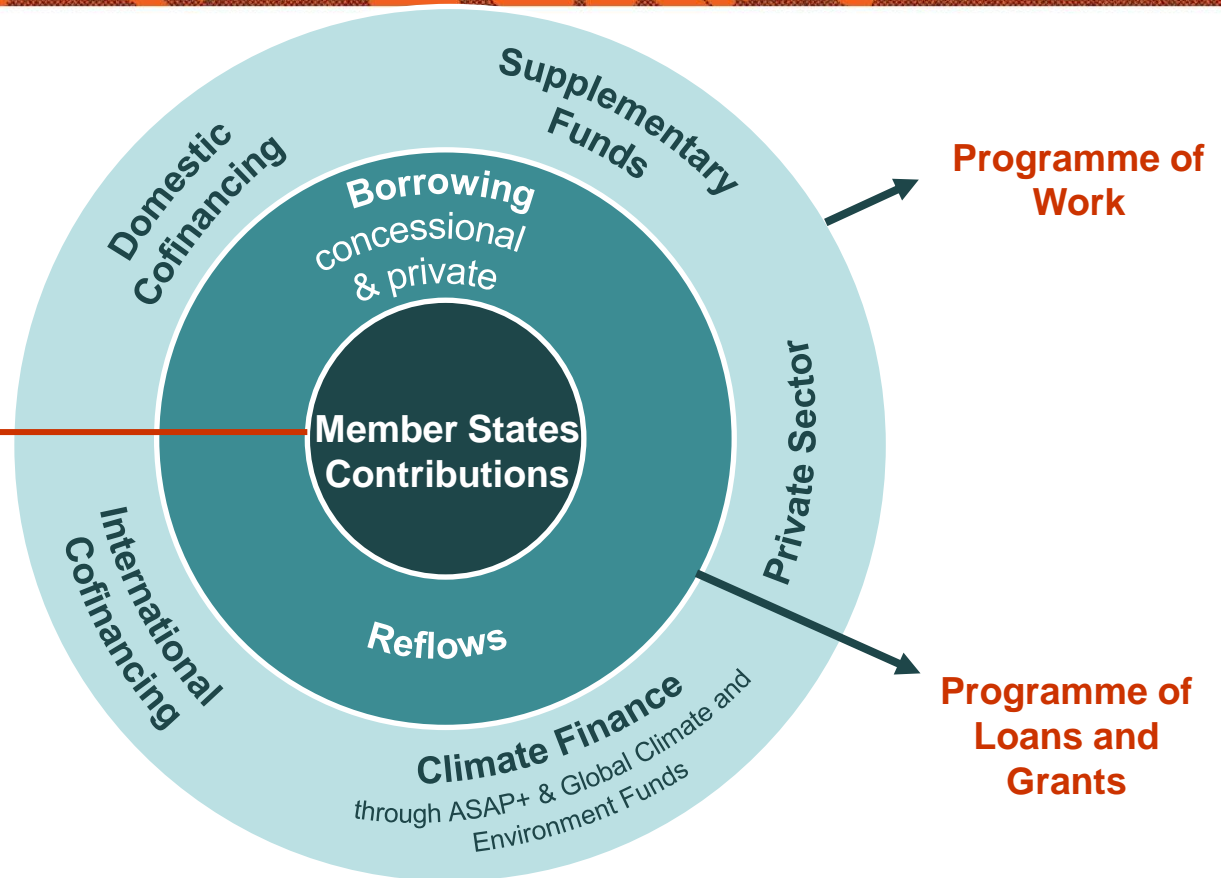
*Includes all categories of Fixed-Term Staff, including fixed-term, continuing, and indefinite appointments; JPOs, staff on loan to IFAD and co-terminus contracts. (ILC staff are excluded). Data recorded as at 1 January of each year.

Core funding enables expanded impact

Crowding-in public and private resources through and **integrated programme of work** (PoW) to maximise impact for **LICs & LMICs** and **ensuring universality**

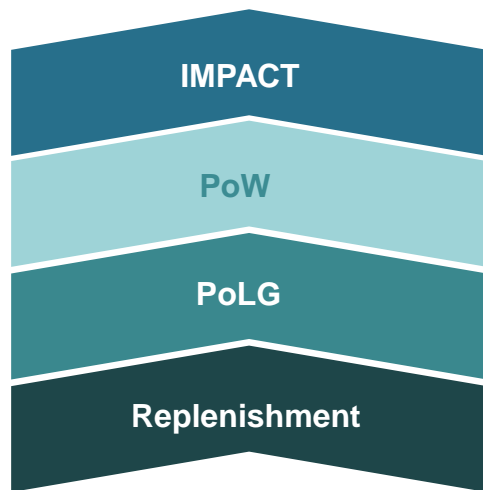
IFAD13 core funding:

- Core Replenishment Contributions
- Concessional Partner Loans grant element
- Climate Additional Contributions







From Commitments to Impact

Ambition of
98-110 million* people with
 increased income



IFAD13 Financial Scenarios *Impact Simulations*

	A	A+	B	C
PoW (US\$ million)	8 535	9 220	9 540	10 080
Impact (number of people [in millions] with)				
 Increased income / positive economic mobility (SDG 2.3 & 1.2)	87-93	94-100	98-104	103-110
 Increased production (SDG 2.3)	71-75	76-81	79-84	83-89
 Increased market access (SDG 2.3)	73-77	79-84	81-86	86-91
 Greater resilience (SDG 1.5)	43-46	47-50	48-51	51-54

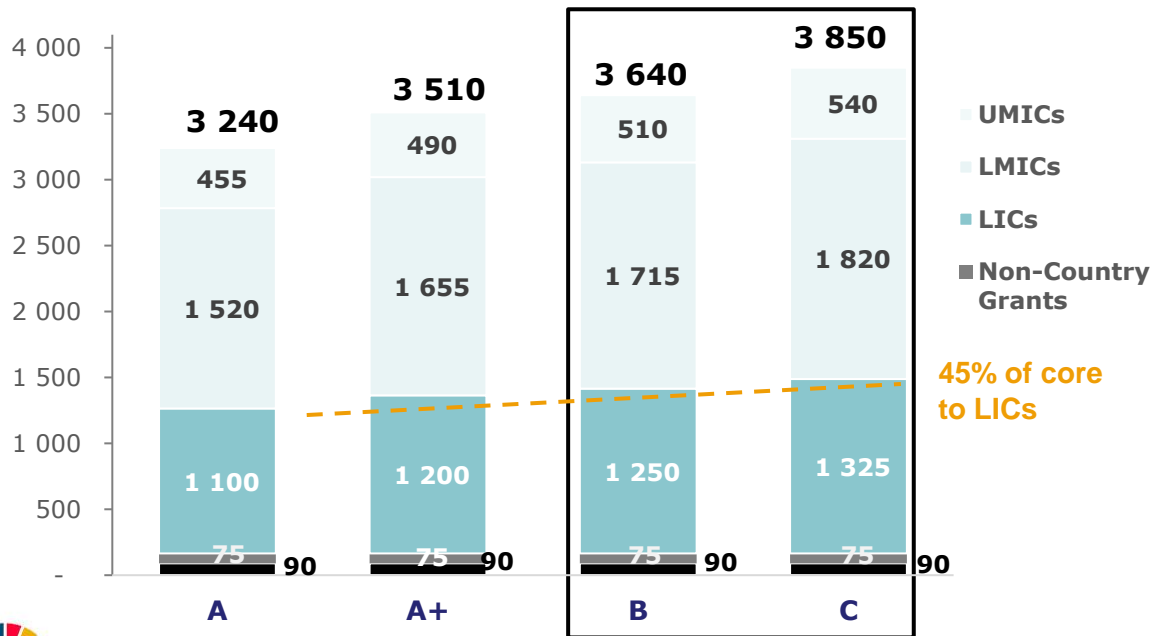
*Based on IFAD10 Impact Assessment results

Ensuring universality and maximising resources to those most in need

100% of core resources will be channelled to LICs and LMICs
 – LICs will receive at least **45%** of core resources

At least **11% and up to 20%** of total resources will be allocated to UMICs through BRAM

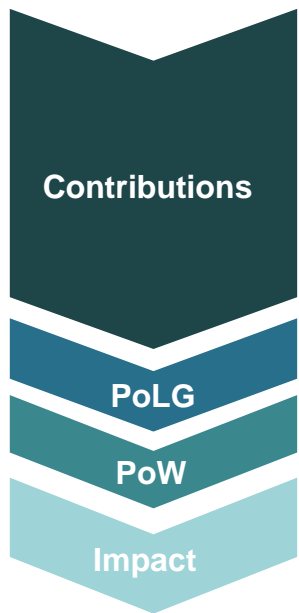
- **55% of core** resources allocated to **Africa**, including **50% to sub-Saharan Africa**
- **At least 30% of core** resources to **FCAS**



Only B and C compatible with ambition for US\$10bn PoW, substantial real increase in support for countries in debt distress, and doubling impact by 2030



IFAD13 Scenarios



(US\$ million, Number of beneficiaries in million)

	IFAD 12	A	A+	B	C
Total new replenishment financing	1 350	1 530	1 825	2 005	2 240
Core Contributions	1 257	1 380	1 500	1 655	1 790
Additional Climate Contributions			150	150	200
Concessional Partner Loans	93	150	175	200	250
IFAD13 replenishment target		1 433	1 711	1 875	2 078
Total PoLG	3 350	3 240	3 510	3 640	3 850
Total PoW	8 180	8 535	9 220	9 540	10 080
Goal: Millions of people with increased income	86 - 93	87 - 93	94-100	98 - 104	103 - 110

Increased **grant element** across all scenarios ensures **increased concessional support** to the poorest countries

Ambition for impact

Invest today to end poverty, hunger and limit damages from climate change.

IFAD's ambition is to impact lives for over **100 million rural people.**



Women sift rice, IFAD project Madagascar

The logo for LIFAD | FIDA, featuring a stylized white icon of a plant or tree to the left of the text "LIFAD | FIDA" in a white, sans-serif font.

LIFAD | FIDA



Thank you