

# IFAD13 Commitments and Results Management Framework

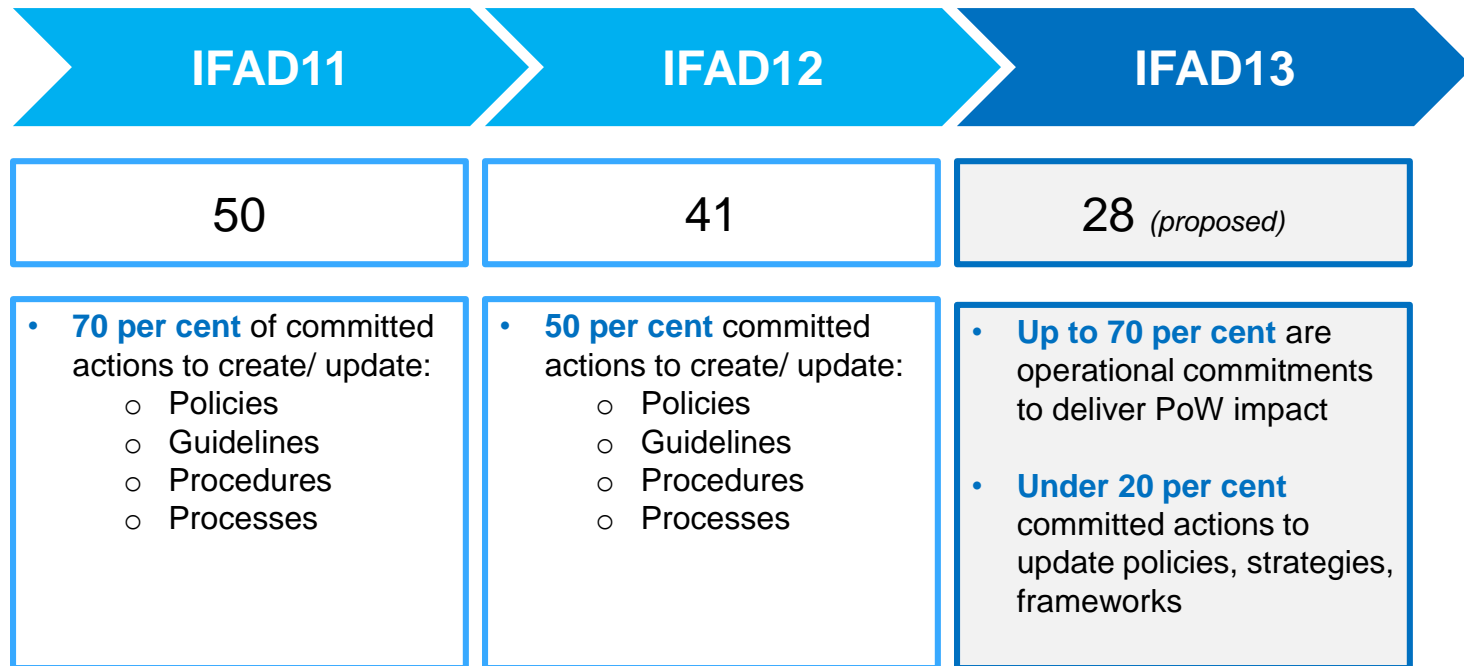
Second Session of the Consultation on the Thirteenth Replenishment

20 June 2023

IFAD13  
REPLENISHMENT

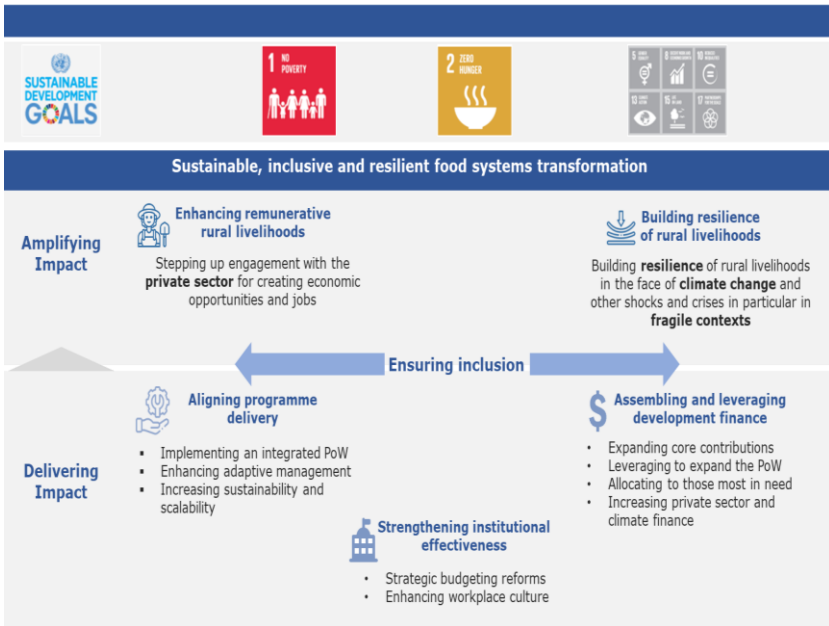


# Evolution of IFAD replenishment commitments



# Proposed IFAD13 commitments

## IFAD13 Framework



## Key IFAD13 Commitments

### Amplifying Impact

- Expand **climate and biodiversity** work with a renewed strategy
- Strengthen **private sector engagement** at country programme level
- Renewed approach in **fragile contexts**

### Delivering Impact

- Reinforced commitments to **improve portfolio performance, quality and delivery**
- New design commitments on **social inclusion themes**
- **Institutional strengthening** through budgeting reforms
- Allocating resources to those **most in need**
- Establishing mechanism for additional **climate contributions**
- Introducing the **PSFP funding** model
- Assembling finance at country level through **cofinancing commitments**

# IFAD Results Management Framework (RMF)

## RMF indicator Timeframe

### Long term

Beyond 2030  
(6-10 years +)

### Gradual

IFAD14  
(3-6 years)

### Immediate

During IFAD13  
(1-3 years)

## TIER I: Global goals and context

Sustainable development goal 1: No poverty

Sustainable development goal 2: Zero hunger

## TIER II: Development results

Impact

Project level development ratings at completion

Project level outcome and outputs

## TIER III: Operational, Organizational and Financial performance

Aligning operational delivery

Strengthening institutional effectiveness

Assembling and leveraging development finance

## IFAD's Control & Influence

Less

Shared  
accountability

More

# IFAD13 Results Management Framework – Key features and process

## Second Consultation Session



### Consistency and continuity

- **Continuity with IFAD12** indicators to ensure accountability and monitoring across cycles
- New priorities assessed at design, while their results are measured at completion by RMF indicators in future cycles



### Streamline

- **Introduce key indicators** related to IFAD13 priorities, if needed
- **Phasing out indicators:**
  - Completed by IFAD12
  - Fully achieved
  - Reported on in existing corporate reports

## Third Consultation Session



### Alignment

- **Increasing targets** in line with IFAD13 priorities (e.g. climate finance)
- Aligning with **external IFI/ MDB benchmarks**

### Informed and evidence based adjustments

- **Adjusting targets** based on more robust data and results (e.g. nutrition impact indicator)
- **Tracking against benchmarks** for outcome/output level indicators vs. monitoring against set targets

The logo for LIFAD | FIDA, featuring a stylized white icon of a plant or grain to the left of the text "LIFAD | FIDA" in white, bold, sans-serif font.

LIFAD | FIDA

The background of the slide features a blue, textured pattern with stylized wheat stalks in yellow, orange, and red. The stalks are positioned in the foreground, with their heads pointing upwards and slightly to the right. The background also shows faint, darker silhouettes of wheat stalks and leaves, creating a layered effect.

Thank you