



# IFAD11 Results Management Framework

Consultation on the Eleventh Replenishment of IFAD's resources: third session  
19-20 October 2017

**Ashwani Muthoo**  
Director, GKS

 **IFAD**  
Investing in rural people

# Contents of presentation

IFAD11  
FIDA11

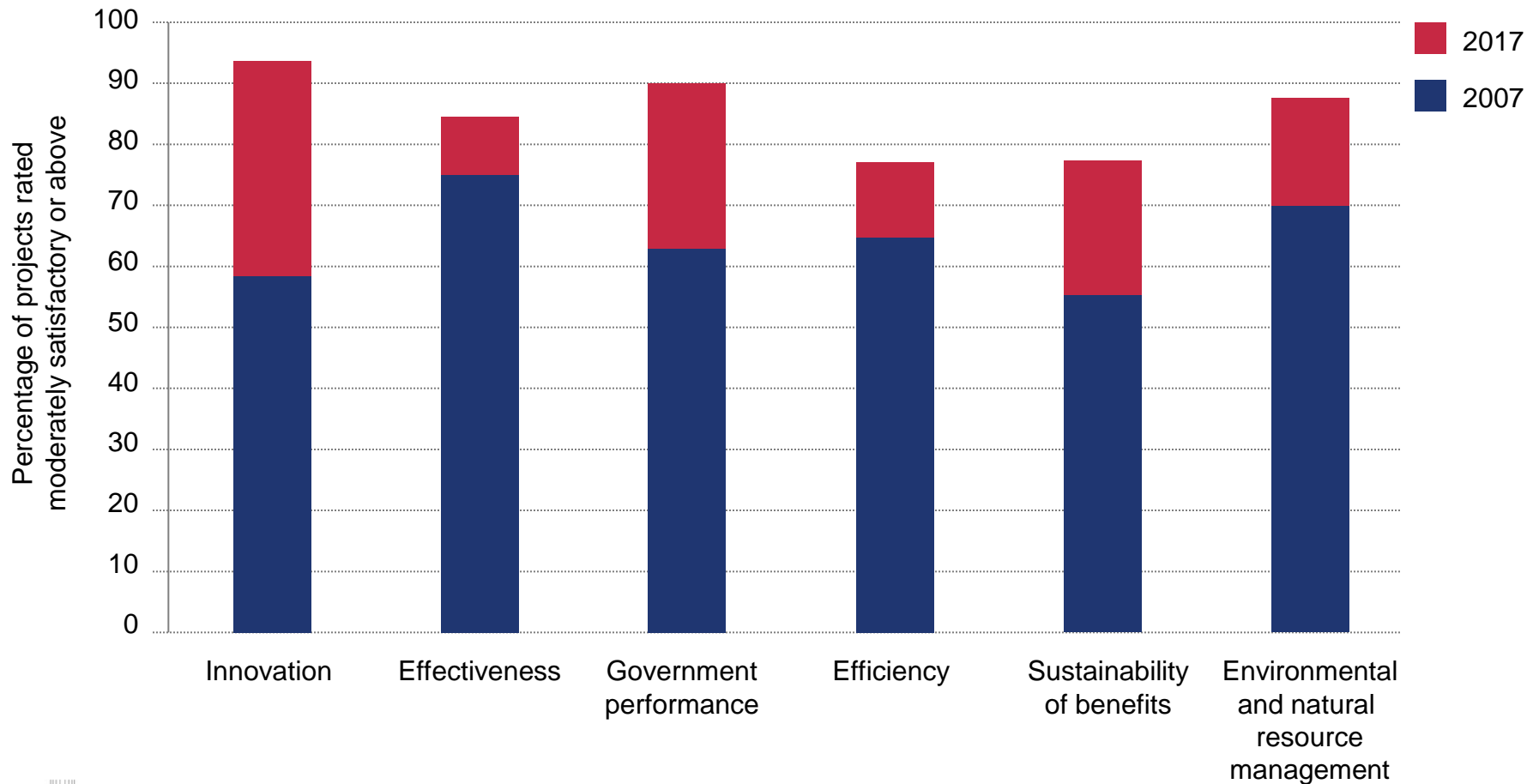
Brief overview of the 2017 Report on IFAD's Development Effectiveness

IFAD11 Results Management Framework

# Report on IFAD's Development Effectiveness (RIDE)

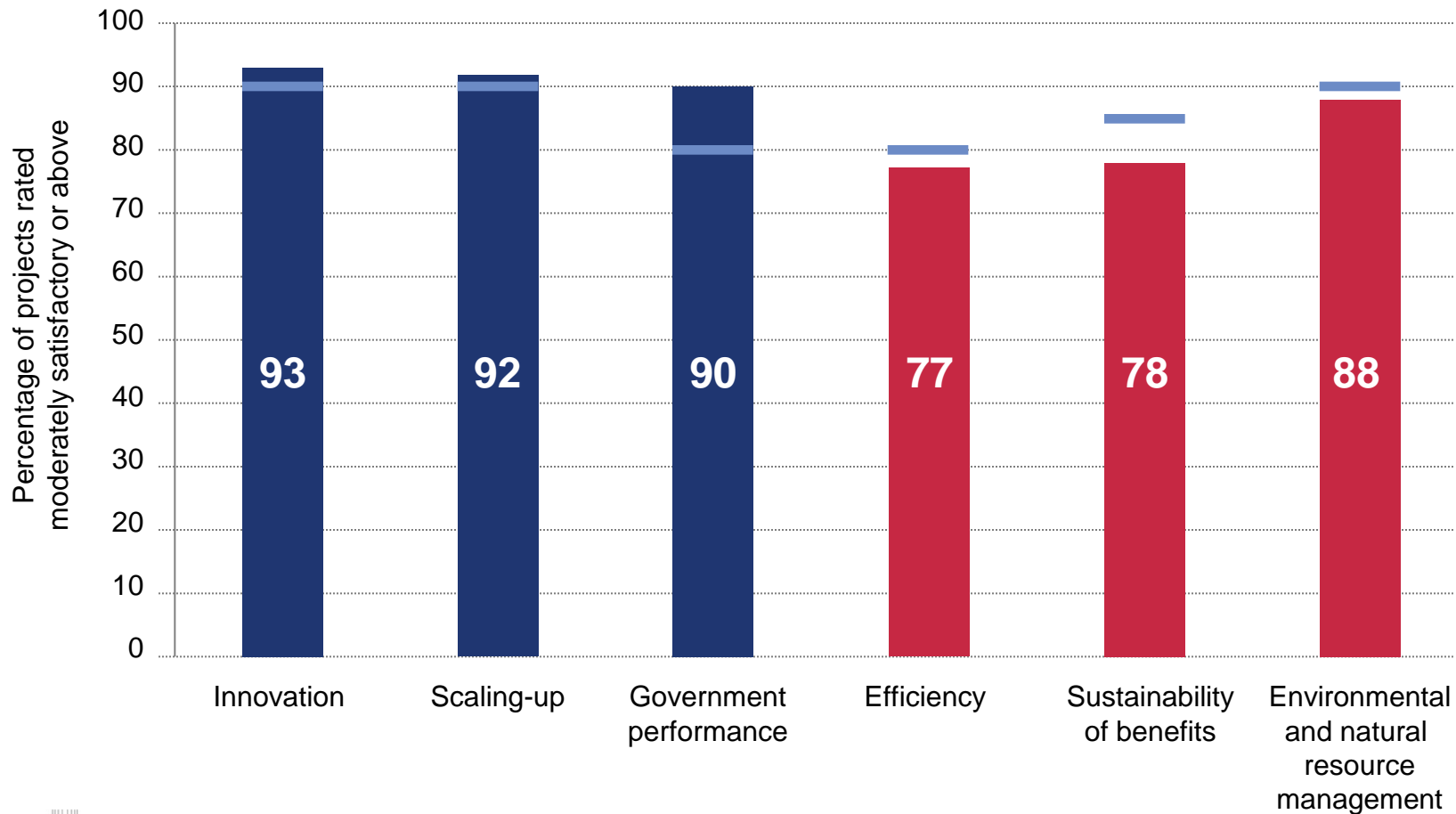
# Improvements in results in the past decade

IFAD11  
FIDA11



# 2017 RIDE – Areas of challenge are similar to independent evaluations

IFAD11  
FIDA11



# 2017 RIDE – Operational and institutional effectiveness

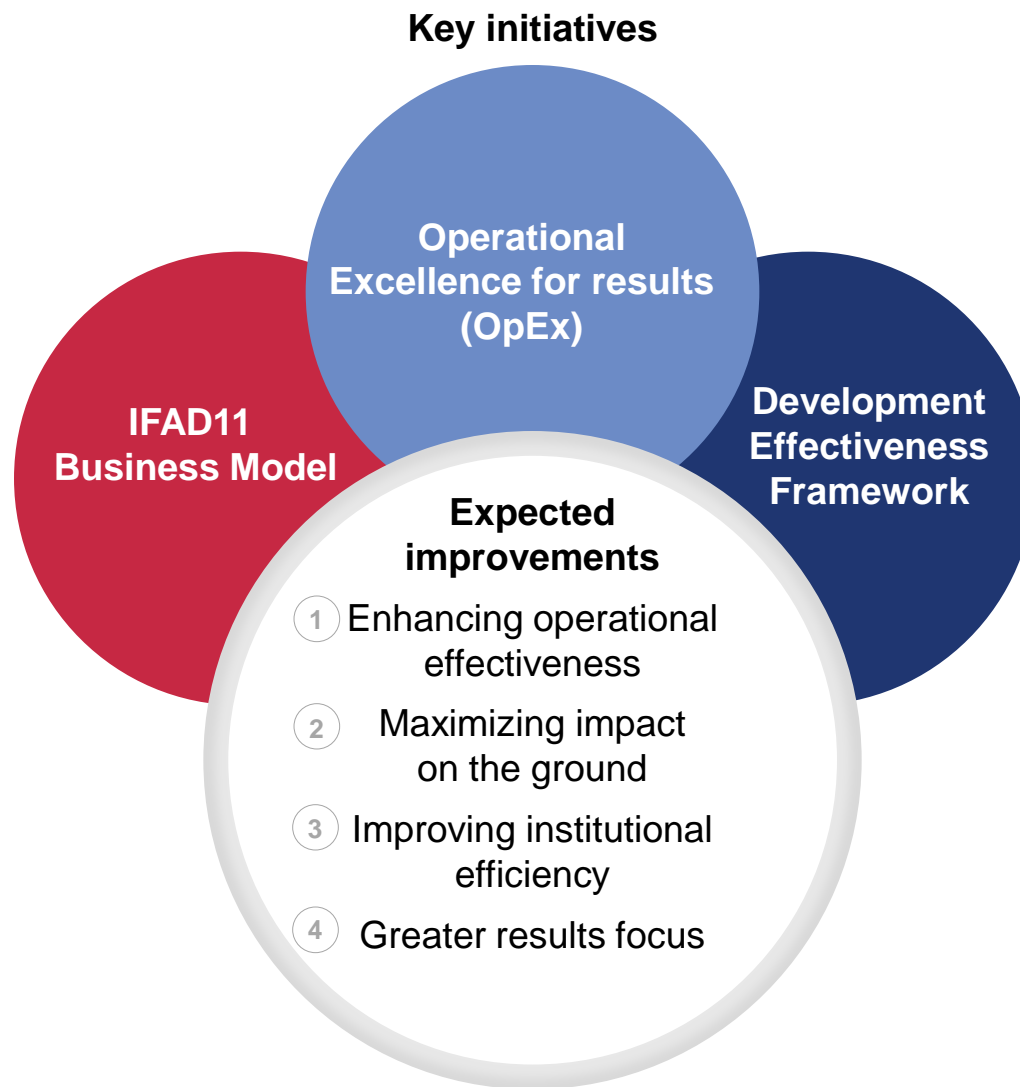


| Indicators   | 2016 | IFAD10 target (2018) | Status |
|--|------|----------------------|--------|
| Overall rating for <b>quality of design</b>                      | 93.3 | 90                   |        |
| <b>Co-financing</b> ratio  | 1.27 | 1.2                  |        |
| Time to fill professional <b>vacancies</b> (days)                | 91   | 100                  |        |
| Time from project approval to <b>first disbursement</b> (months) | 16.8 | 14                   |        |
| Percentage <b>disbursement ratio</b> (overall portfolio)         | 12.8 | 15                   |        |
| Percentage of <b>women in P-5</b> posts and above                | 25   | 35                   |        |

# Response to ARRI and RIDE

## Moving beyond moderately satisfactory

IFAD11  
FIDA11



# Results Management Framework (RMF)



### IFAD10

Results Reporting Tool

Limited alignment to IFAD's evolving Business Model

Composed of Five levels

Self-assessment data

Non-lending activities and mainstreamed areas only partly monitored

No reflection of Value-for-Money

### IFAD11

Results Management Tool

Aligned with IFAD11 Business Model and IFAD Strategic Framework 2016-2025

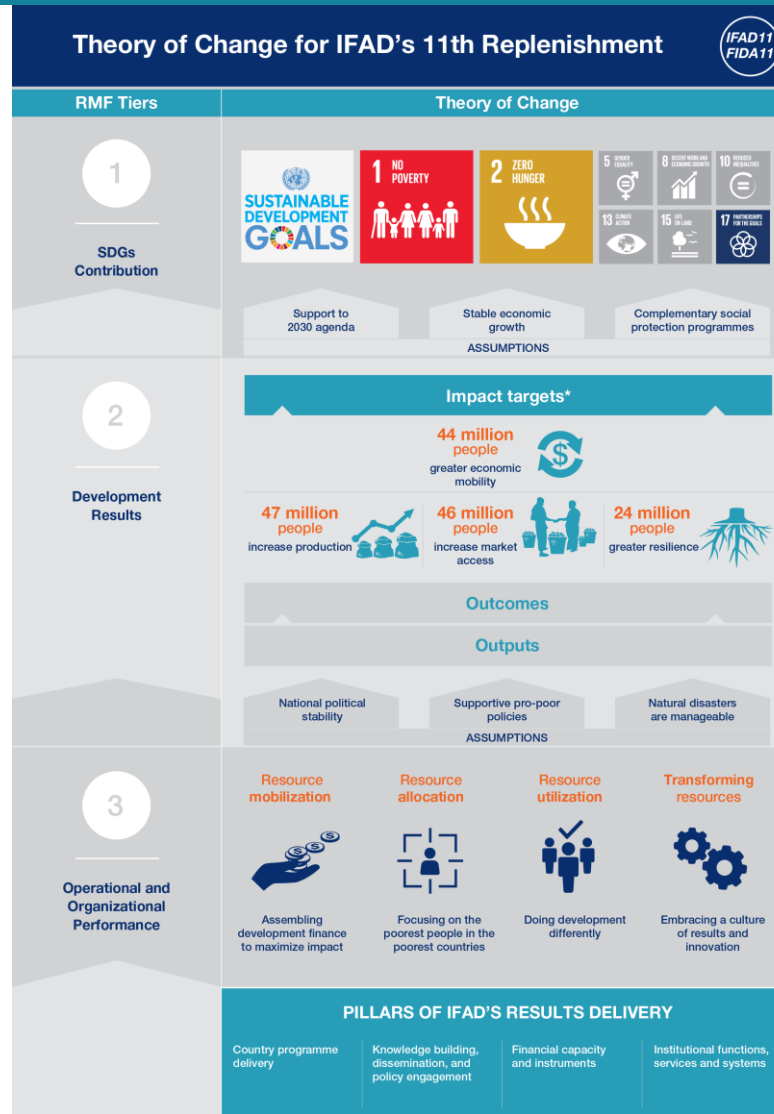
Streamlined three-tier structure

Self-assessment, independent evaluation, and disaggregated reporting

All non-lending activities and mainstreamed areas fully monitored

Integrates IFAD's Value-for-money proposition

# IFAD11 RMF Theory of change



\* Based on a proposed PoLG of US\$3.5 billion for IFAD11.

# IFAD11 RMF Theory of change

IFAD11  
FIDA11

1

SDGs  
Contribution



Support to  
2030 agenda

Stable economic  
growth

Complementary social  
protection programmes

ASSUMPTIONS

**SDG 1.1.1** Proportion of population **below the international poverty line** of US\$1.90 a day

**SDG 2.1.2** Prevalence of **food insecurity**

**SDG 2.2.1** Prevalence of **stunting** among children under 5 years of age

**SDG 2.2.2** Prevalence of **malnutrition**

**SDG 2.3.2** **Average income** of small-scale food producers

**SDG 2.a.2** Total **official flows** to the agriculture sector (billions of United States dollars)

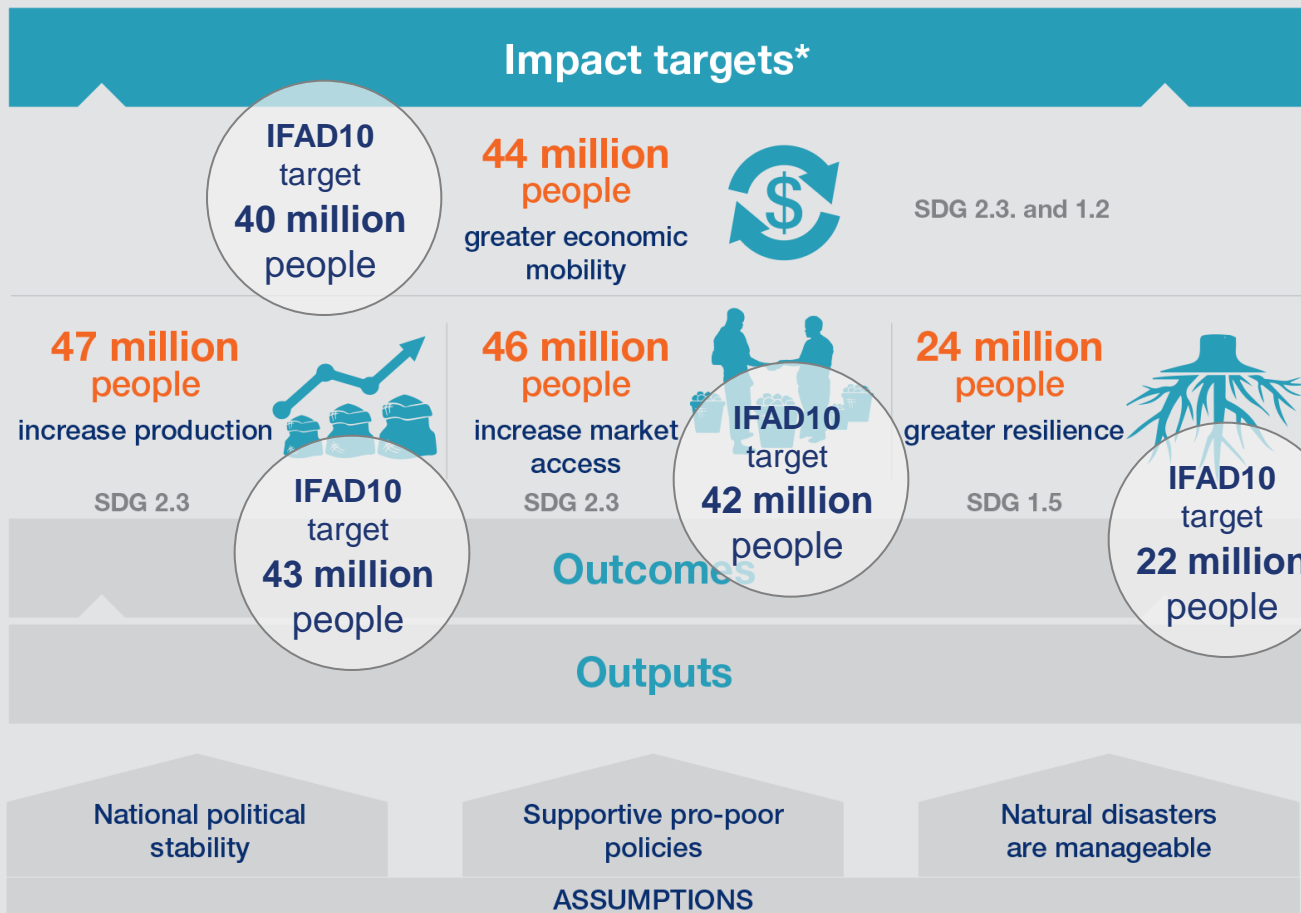
**SDG 2.a.1** **Government expenditure** on agriculture (index)

# IFAD11 RMF Theory of change



2

## Development Results



\*Based on a proposed PoLG of US\$3.5 billion for IFAD11

# IFAD11 RMF Theory of change

IFAD11  
FIDA11

3

## Operational and Organizational Performance

### Resource mobilization



Assembling  
development finance  
to maximize impact

- Ratio of debt to equity
- Co-financing ratio

### Resource allocation



Focusing on the  
poorest people in the  
poorest countries

- Resource allocations to country groups
- Appropriateness of project-level targeting

### Resource utilization



Doing development  
differently

- Non-lending activities and SSTC
- Disbursement ratio

### Transforming resources



Embracing a culture  
of results and  
innovation

- Decentralization ratio
- Institutional efficiency

# Measuring mainstreaming in IFAD11

IFAD11  
FIDA11



## Youth

### Tier 2

8 people-centered output indicators disaggregated by youth



## Gender

### Tier 2

8 people-centered output indicators disaggregated by gender



## Climate Change

### Tier 2

project-level outcome rating on “Adaptation to Climate Change”

### Tier 2

2 project-level output indicators



## Nutrition

### Tier 1

2 SDG2 indicators related to nutrition

### Tier 2

# of persons/households provided with targeted support to improve their nutrition



## South-South and Triangular Cooperation

### Tier 3

% of COSOPs with an elaborate approach to SSTC

# IFAD and Value-for-Money

IFAD11  
FIDA11



## ECONOMY

**Decreasing costs** keeping level and quality of outputs

- Time from concept note to approval
- Time from project approval to first disbursement
- Disbursement ratio



## EFFICIENCY

**Expanding IFAD's scale of operation**

- Resources leveraged through borrowing
- Country selectively
- Project-level efficiency
- Institutional efficiency



## EFFECTIVENESS

**Amplifying impact** through partnerships

- Country-level policy engagement
- Partnership building
- Co-financing ratio
- Development Effectiveness Framework



## EQUITY

**Prioritizing the poorest people** and the poorest countries

- Share of core resources allocated to LICs and LMICS
- Appropriateness of targeting in IFAD projects
- Men, women and youth reached



Investing in rural people

# Thank you

**IFAD11**  
**FIDA11**

Investing in rural people