



The 2013 Annual Report on Results and Impact (ARRI) of IFAD Operations Evaluated in 2012

Ashwani Muthoo

Deputy Director
Independent Office of Evaluation

21 February 2014

Introduction



- IFAD is one of the few multilateral development organizations that produces a report such as the ARRI.
- The first ARRI issued in 2003.
- The ARRI has two objectives: (i) report on results; and (ii) identify lessons and systemic issues
- The ARRI now draws on a robust sample of close to 200 project evaluations and 23 country programme evaluations.

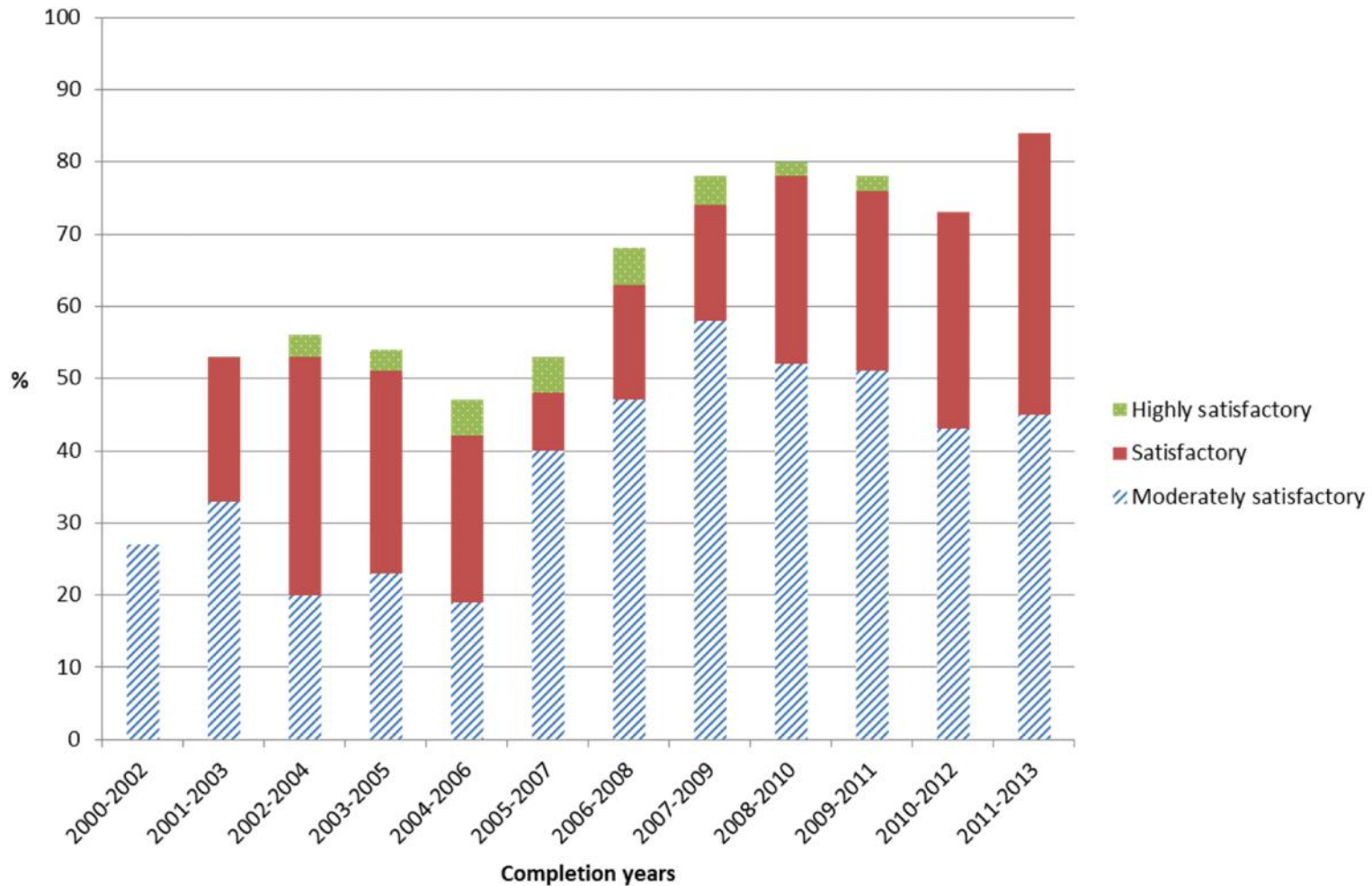
Areas of strengths:

- Rural poverty impact shows an improving trend.
- IFAD operations have positive results in promoting gender equality and women's empowerment.
- Clear improvements in natural resources and environmental management.
- IFAD's own performance as a partner.

Opportunities:

- Efficiency of operations and sustainability of benefits.
- More systematic scaling up for wider impact.
- Support governments strengthen their performance.

IFAD performance by year of project completion (all data)



Recent Project Performance



PCR/PPA only and all evaluation data for projects completing in 2009-2011

Evaluation criteria	% moderately satisfactory or better	
	PCR/PPA data	All evaluation data
Relevance	95	94
Effectiveness	63	66
Efficiency	49	48
Project Performance	65	68
Rural Poverty Impact	75	79
Sustainability	50	51
Innovation and Scaling-up	70	73
Gender equality & women's empowerment	74	78
IFAD performance	77	77
Government performance	63	65
Overall project achievement	70	72

Low disconnect with self evaluation data.

Country Programme Performance



- Ratings for non-lending activities have improved since 2006-2008. 83% of programmes rated as moderately satisfactory or better, but only 8% satisfactory or better.
- COSOP performance rated as moderately satisfactory or better in 75% of programmes, and satisfactory or better in 25%.
- More realistic objectives and better funding for COSOP formulation, management and monitoring are required.

External Benchmarking



Percentage of Agriculture and Rural Development (ARD) projects completing 2000-12 rated moderately satisfactory or better.

Time period	IFAD	AsDB	WB	AfDB
2000-2012	77	61	77	64
Number of projects rated	173	142	550	100

The performance of IFAD operations globally is on par with the World Bank agriculture sector operations.

At regional level, IFAD project performance is comparable with AfDB in Africa (65% and 64% respectively) and better than AsDB in Asia and Pacific (83% as compared to 78%) (for projects completed between 2009 -12).

Comparison with other IFIs must take into account the more challenging nature and context of IFAD operations.

Key issues raised by the 2013 ARRI



- Need and scope for improving the efficiency of IFAD operations.
- Getting the balance right between ambition and available resources (human and financial).
- Ensuring the poorest are reached.
- Weakness in monitoring and evaluation at project and country programme levels remain a challenge.
- The instruments used and priorities to support MICs deserve attention.

Understanding exceptional projects

(http://www.ifad.org/evaluation/arri/2013/arri2013_ex-projects.pdf)



- Fragile and conflict-affected situations are more challenging, but this can be offset by good design and management.
- Project design has improved as a result of QE/QA, but there are opportunities for further improvement.
- Quality of project management, and direct supervision and implementation support, are key.

Conclusions



- IFAD's own performance as a partner is the best since the ARRI was introduced.
- Performance in gender equality and women's empowerment is positive.
- IFAD operations are generally having good impact on rural poverty, and in promoting innovation approaches.
- There are three important areas of challenge to IFAD-funded projects:
 - 1) Moderately satisfactory performance is predominant;
 - 2) Efficiency of IFAD operations; and
 - 3) Sustainability of benefits.

Conclusions (cont.)



- More attention needed to strengthen Government's performance including project management.
- At the country programme level, performance has improved since 2006-2008, though more work in need to ensure greater integration of and synergies across all activities.
- Fragile and conflict-affected situations are an important focus for IFAD. Poorer performance in these situations represents a priority challenge.