

IFAD13: Building Rural Resilience for a Food Secure Future

Informal Meeting on the draft IFAD13 report

22 September 2023

IFAD13 REPLENISHMENT

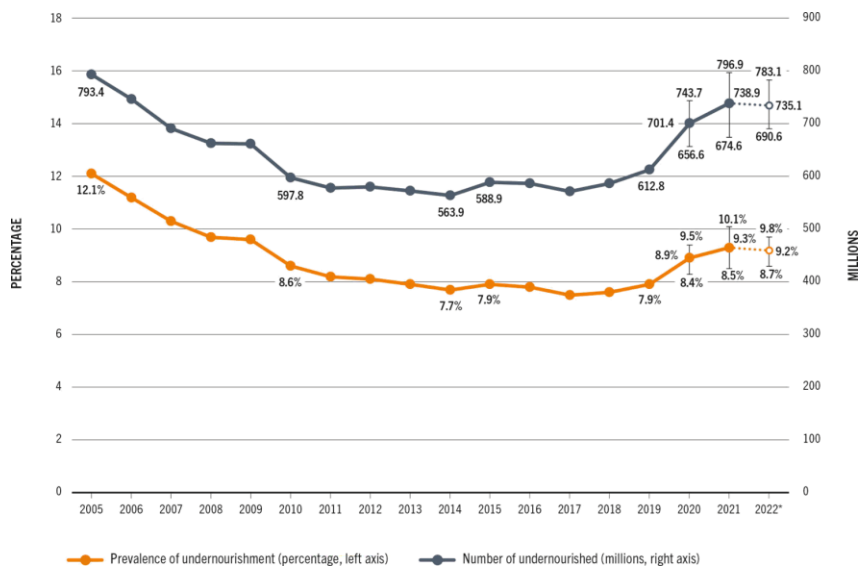
 IFAD | FIDA



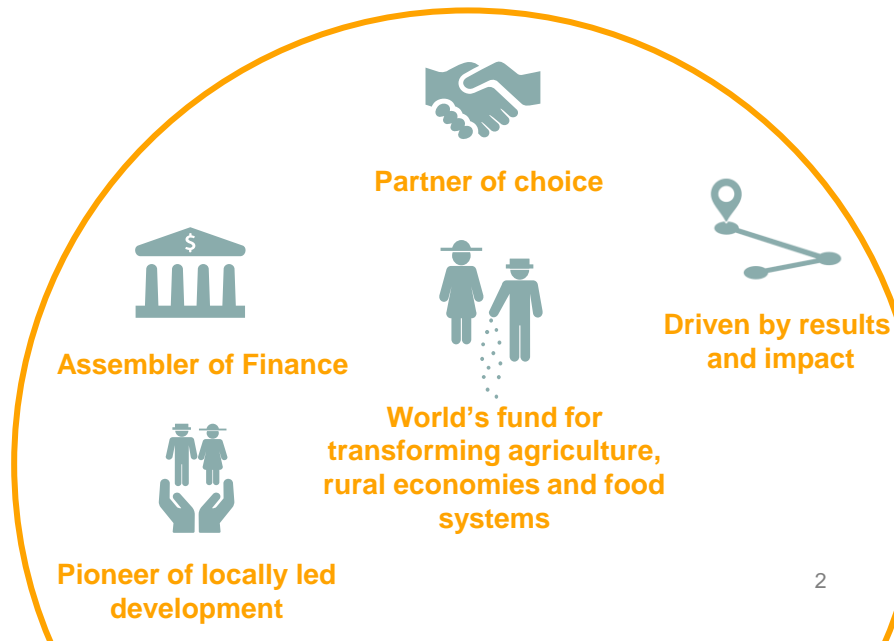
Now is the time to act and IFAD is ready to deliver solutions



➡ = IFAD13 project durations based on average length of 6 years

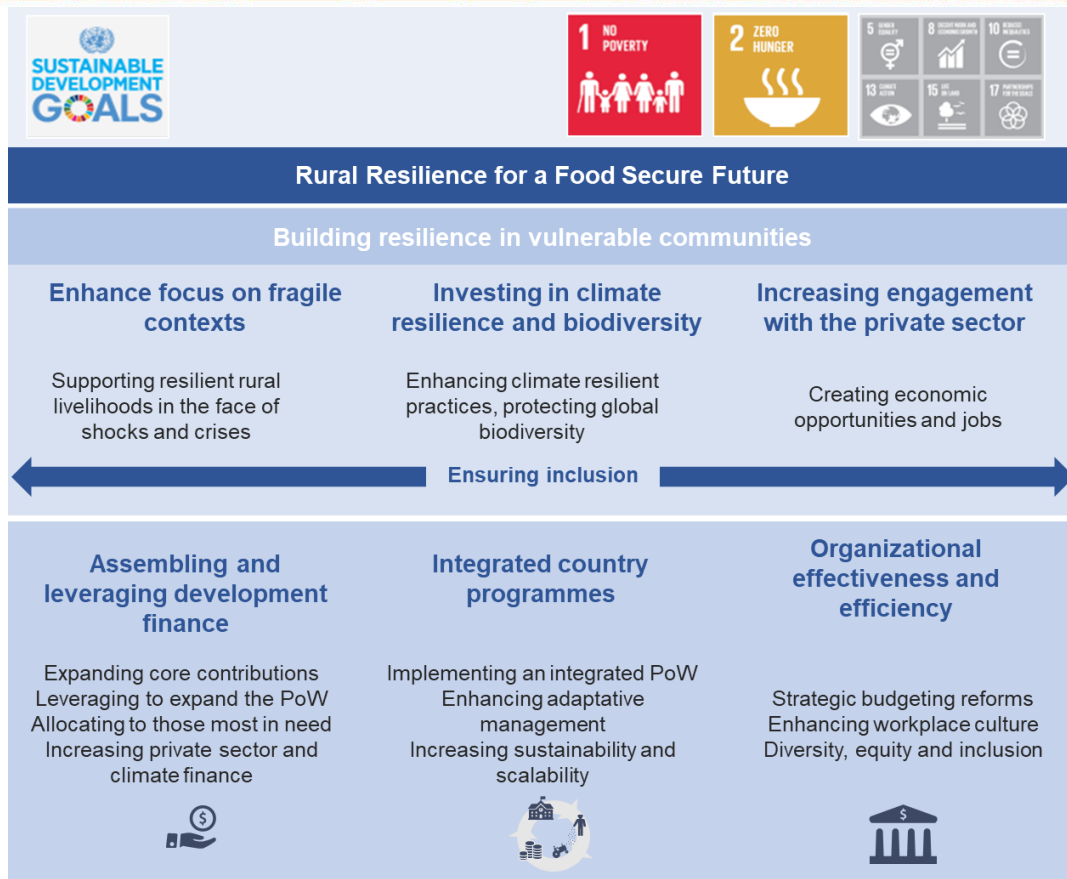


NOTES: * Projections based on nowcasts for 2022 are illustrated by dotted lines. Bars show lower and upper bounds of the estimated range.
SOURCE: FAO, 2023; FAOSTAT; Suite of Food Security Indicators. In: FAO. [Cited 12 July 2023].

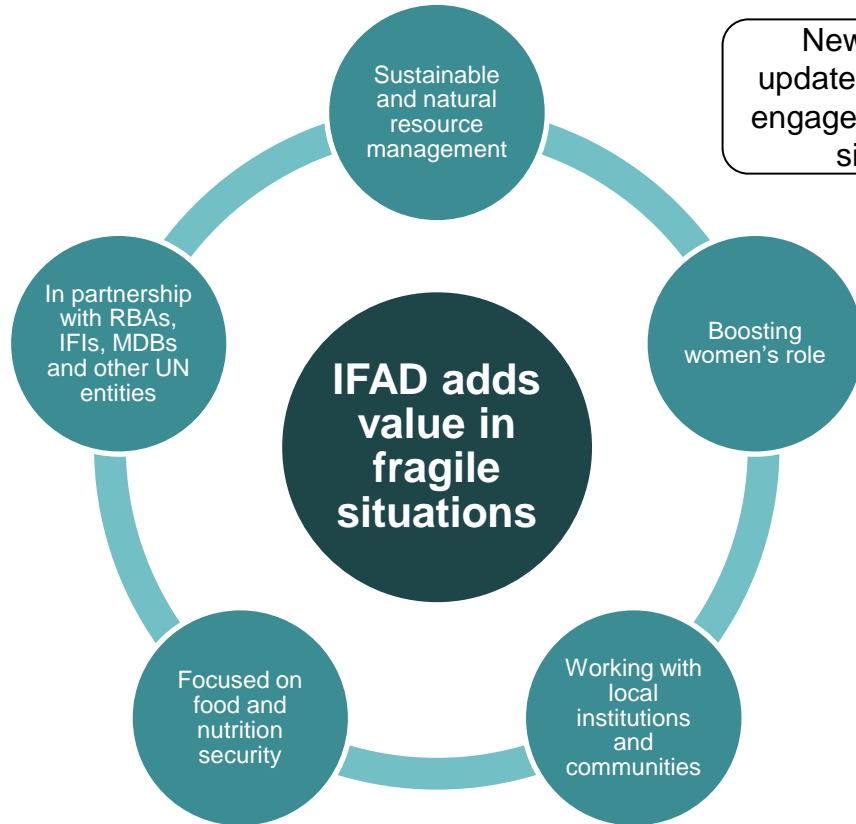


IFAD13: A framework for investing in rural resilience for a food secure future

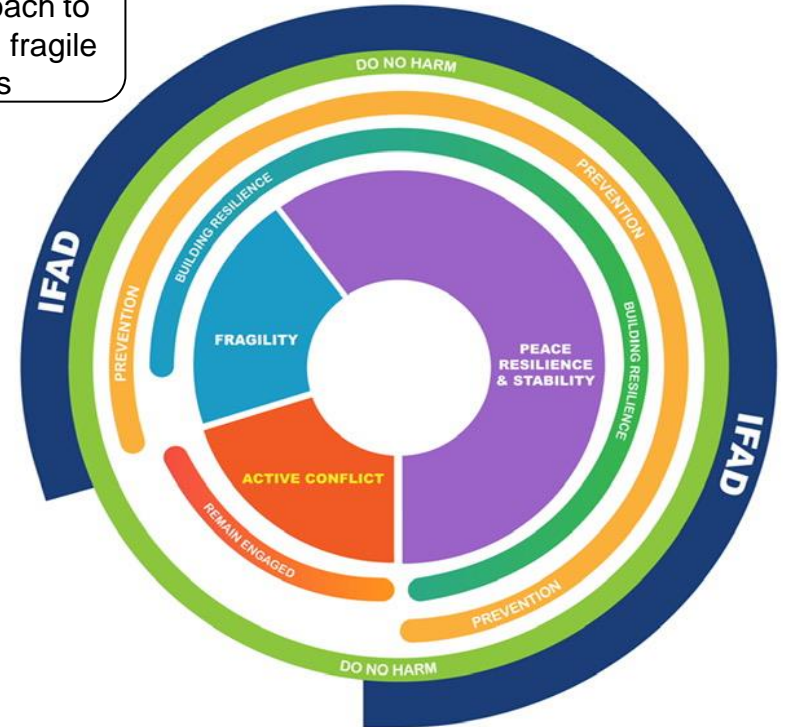
- IFAD13 offers an **effective framework for investing in rural resilience for a food secure future**
- Focus on **IFAD's core mandate, including through empowering women and youth, and improving food security and nutrition**
- Focused on addressing three key interconnected challenges of **increasing fragility, climate change, and inadequate private sector investment**



Enhanced focus on fragile contexts



New annex on updated approach to engagement in fragile situations



Investing in biodiversity and climate resilience



Raise climate finance target from 40% to **at least 45%**



New policy on climate, environment and biodiversity, **and roadmap for Paris alignment**



Create ACCs as channel for 100% climate finance contributions



Integrated programmatic approach to climate operations

Updated ACC annex will be included in the next version of the report



Increasing engagement with the private sector

Private sector investments are an integral part of **closing the SDG financing gap** and present a **lifeline for small-scale farmers** at the country level



I. Enabling

De-risking investments



II. Catalyzing

PoLG and PSFP instruments



III. Assembling

PSFP instruments and
convening power

In IFAD13 a **strengthened PSFP funding model** and **deeper integration in country programmes** will help deliver greater impact across IFAD's **mainstreaming priorities**

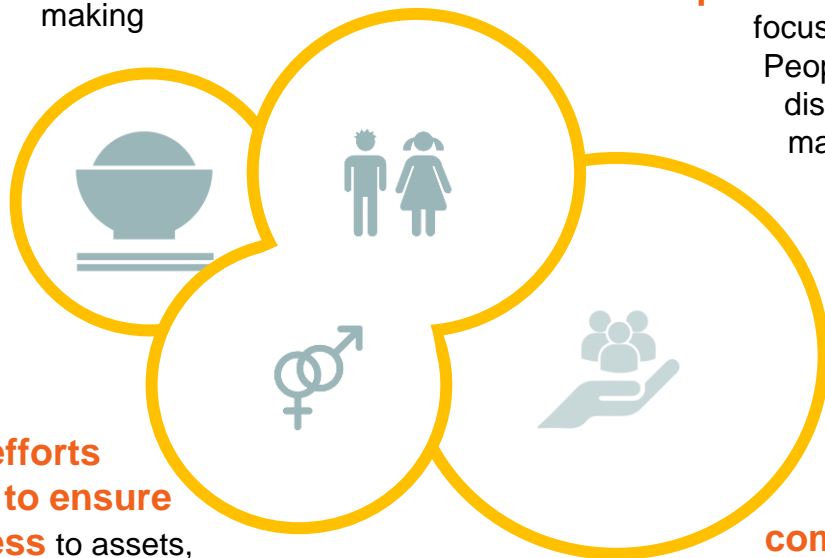


Ensuring inclusivity to leave no one behind

Targeting for nutrition and promoting diversified local food production, and consumption

Strengthen **youth employment** and **youth participation** in decision making

People-centred approach focused on Indigenous Peoples, persons with disabilities and other marginalized groups

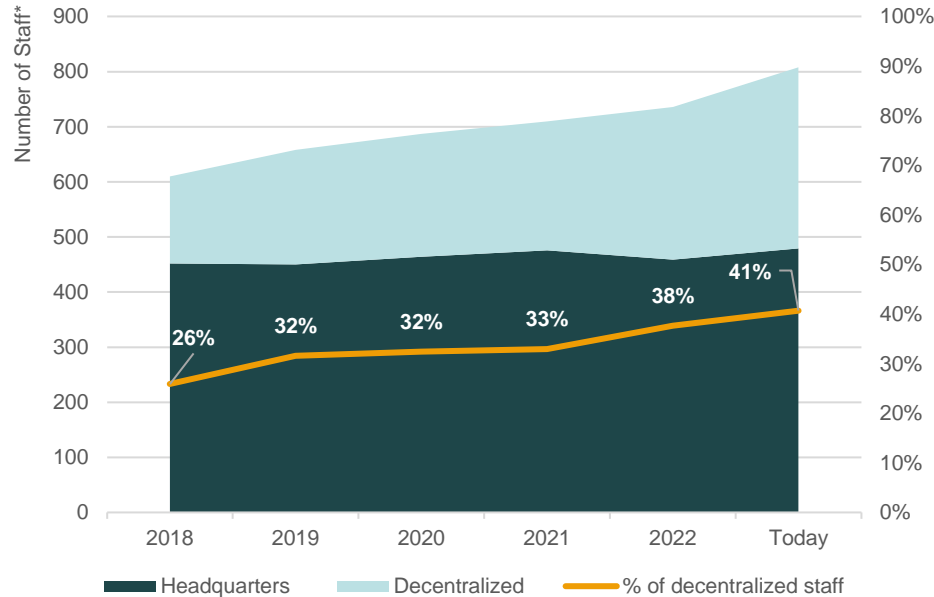


Intensifying **efforts on gender to ensure equal access** to assets, services, employment and markets

Working with **community-based organizations** to promote inclusive development

Continued focus on organizational effectiveness and efficiency

IFAD's workforce is growing and increasingly decentralized



IFAD will continue to strengthen effectiveness and efficiency

- IFAD13 **consolidates** and **builds on** recent reforms and initiatives (e.g. efficiency action plan)
- Focus on **operational delivery and project efficiency**
- Optimizing **resource use and prioritization** and streamlining budgeting
- Enhancing **capacity and workplace culture**

*Includes all categories of Fixed-Term Staff, including fixed-term, continuing, and indefinite appointments; JPOs, staff on loan to IFAD and co-terminus contracts. (ILC staff are excluded). Data recorded as at 1 January of each year.

IFAD13 Scenarios

(US\$ million, Number of beneficiaries in million)

Contributions

PoLG

PoW

Impact

Total new replenishment financing

Core Contributions

Additional Climate Contributions

Concessional Partner Loans

Total PoLG

Total PoW

Goal: Millions of people with increased income

IFAD 12

A

A+

B

C

1 350

1 530

1 825

2 005

2 240

1 257

1 380

1 500

1 655

1 790

150

150

200

93

150

175

200

250

3 350

3 240

3 510

3 640

3 850

8 180

8 535

9 220

9 540

10 080

86 - 93

87 - 93

94-100

98 - 104

103 - 110

Summary of Key Changes since 2nd Session

Business Model and Financial Framework:

- ✓ Strengthened presentation of **IFAD comparative advantage**
- ✓ Strengthened **PSFP** annex and highlighted interlinkages with other priorities
- ✓ Clarified **climate finance target** as “at least 45%” of PoLG and committed to Paris-alignment roadmap
- ✓ **ACC** note being updated based on feedback
- ✓ Added annex on **updated approach to engagement in fragile situations**
- ✓ **Dropped highest Scenario D and added A+** and revised presentation of scenarios

Commitment Matrix:

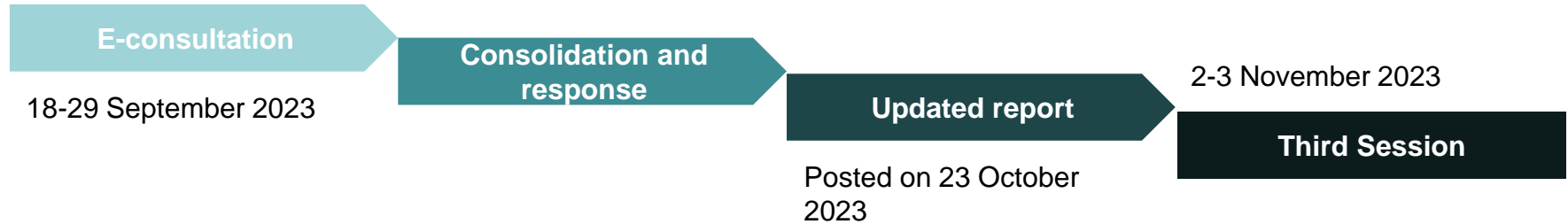
- Clarified wording and **timelines for commitments**
- Emphasised how gender, youth and nutrition commitments increase **ambition** within the overall portfolio
- Added **commitments** on engagement with farmers organizations, Indigenous Peoples and rural youth.

RMF:

- **New impact indicators** on food security and women’s empowerment
- **Targets and clear definitions** for all indicators, aiming to use multilaterally agreed terminology
- Clarified **disaggregation** of data by gender, youth, disability and fragility status
- Responded to many of findings of **IOE evaluation of IFAD12 RMF**

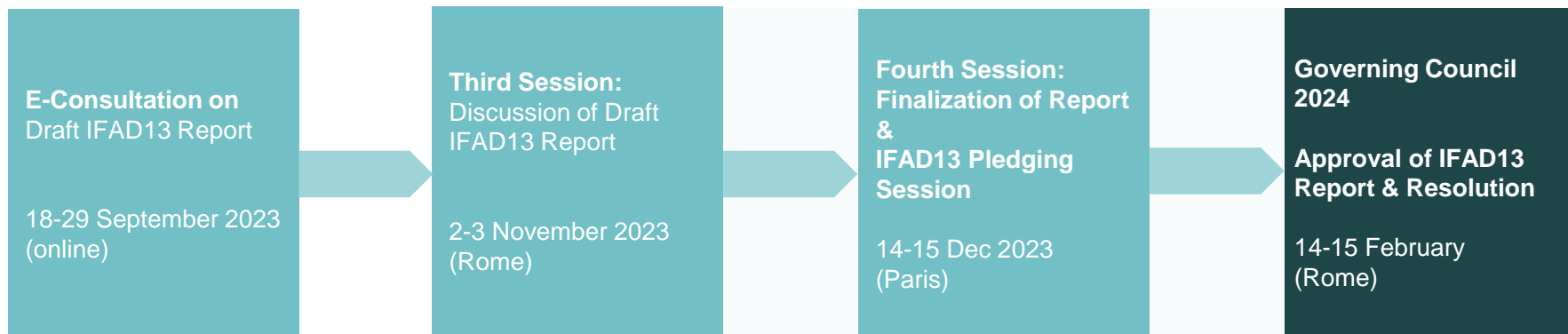


Process for E-consultation on the draft IFAD13 Report



- Member States are invited to comment via the Member States Interactive Platform **by 29 September**
- Partners and interested stakeholders are also invited to submit comments via IFAD's website at the same time
- Comments will be **consolidated and addressed**, and a summary of the comments received will be published ahead of the Third Session

Timeline and next steps: Road to Paris



Updated report

Posted on 23 October 2023

- **Save the Date** for 4th session published (formal invitation and agenda at least 6 weeks in advance)
- **Non-Members of the Consultation** will be invited to connect virtually to pledge
- **Early pledge announcements** also encouraged to help build momentum

The logo for LIFAD | FIDA, featuring a stylized white icon of a plant or tree to the left of the text "LIFAD | FIDA" in a white, sans-serif font.

LIFAD | FIDA

A large, dark silhouette of a palm tree, possibly a coconut palm, dominates the background of the slide. The silhouette is rendered in a dark brown or black color against the orange background, showing the fronds and the trunk.

Thank you