

Report on IFAD's Mainstreaming Effectiveness (RIME)

2024

Presented by:

Juan Carlos Mendoza
Director, Environment, Climate, Gender
and Social Inclusion Division (ECG)

126th session of the Evaluation Committee
6 September 2024



Introduction

IFAD systematically addresses the interplay between **environment, climate change, gender, nutrition, youth, Indigenous Peoples, and persons with disabilities** to achieve sustainable transformation of food systems and rural areas.

The RIME reviews the Fund's performance against IFAD12 targets in these areas in 2023.

In 2023, IFAD:

- ✓ made **significant progress** towards social inclusion and climate finance targets
- ✓ expects to meet **nearly all mainstreaming targets** by the end of IFAD12

**Highly
satisfactory**

**2023 MOPAN
assessment of IFAD's
environment and
climate work**



Mainstreaming in COSOPs



100% of COSOPs and Country Strategic Notes (CSNs) incorporate analysis of nutrition, gender, youth, environment, and climate.

In IFAD12, additional emphasis placed on Indigenous Peoples, persons with disabilities, and biodiversity.

Country situation analysis

Mainstreaming themes are prioritized based on a country's situation analysis, guided by IFAD policies and strategies

Focus on NDCs

Strengthening priority of agriculture-related climate change commitments in **Nationally Determined Contributions (NDCs)**

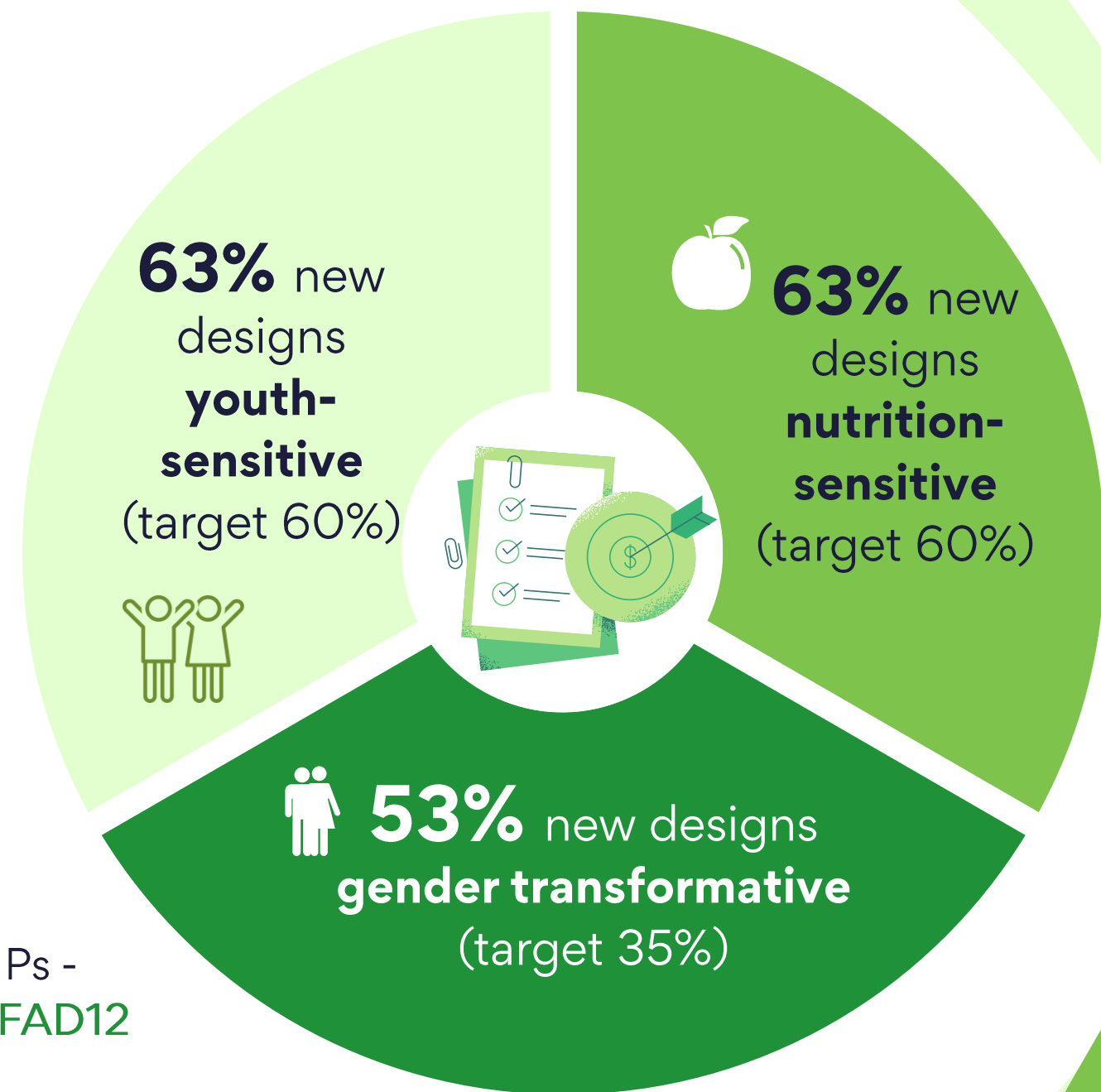
Mainstreaming in project design (social inclusion)

On-track to achieving
social inclusion targets

Targets being met in new designs for:

- gender transformative programming
- youth sensitivity
- nutrition sensitivity
- prioritizing Indigenous Peoples
- prioritizing persons with disabilities (PwD)

- ✓ 6 new projects prioritize IPs - **12 projected by end of IFAD12** (target 10 new projects)
- ✓ 5 new projects prioritize PwD (target 5 new projects)



Mainstreaming in project design (climate-finance)

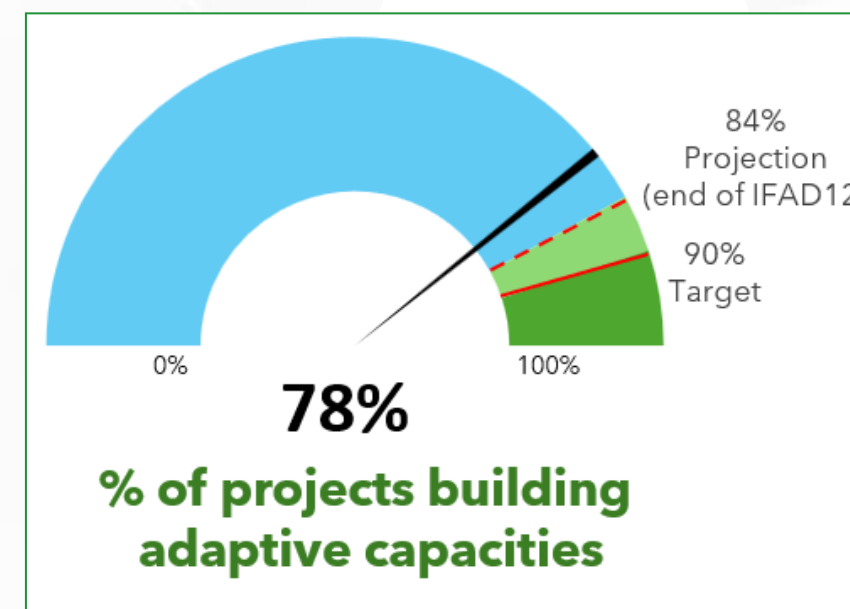
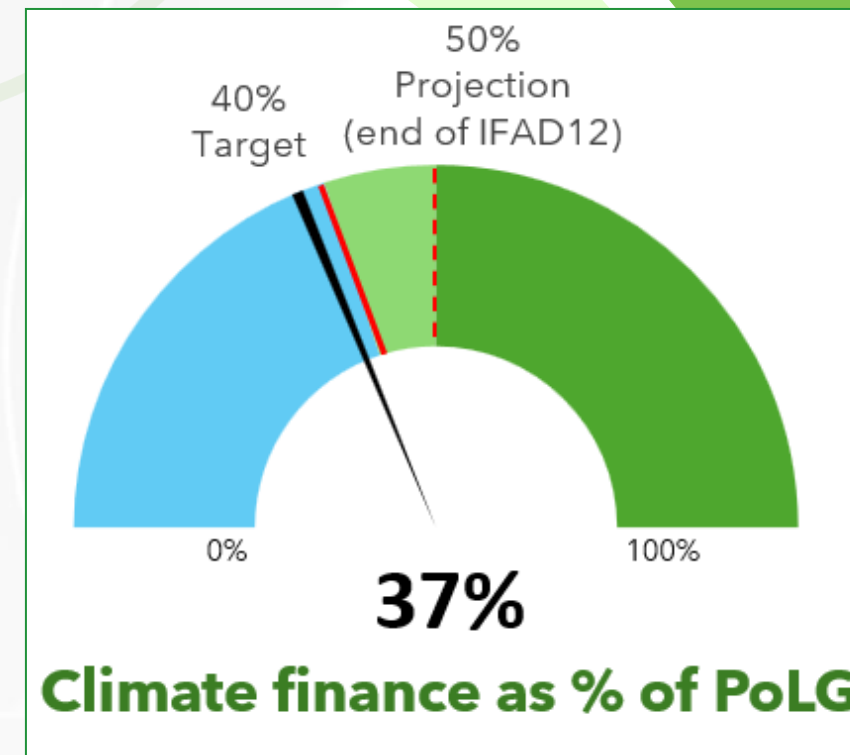
Almost on track to achieving 40% climate finance target

Projections indicate:

- full achievement of climate finance target by the end of IFAD12
- falling short on building adaptive capacity given that sample comprises ongoing projects from previous IFAD cycles

Compared to 2022:

- ✓ Climate finance increased by 7%
- ✓ Building adaptive capacities increased from 69% to 78%



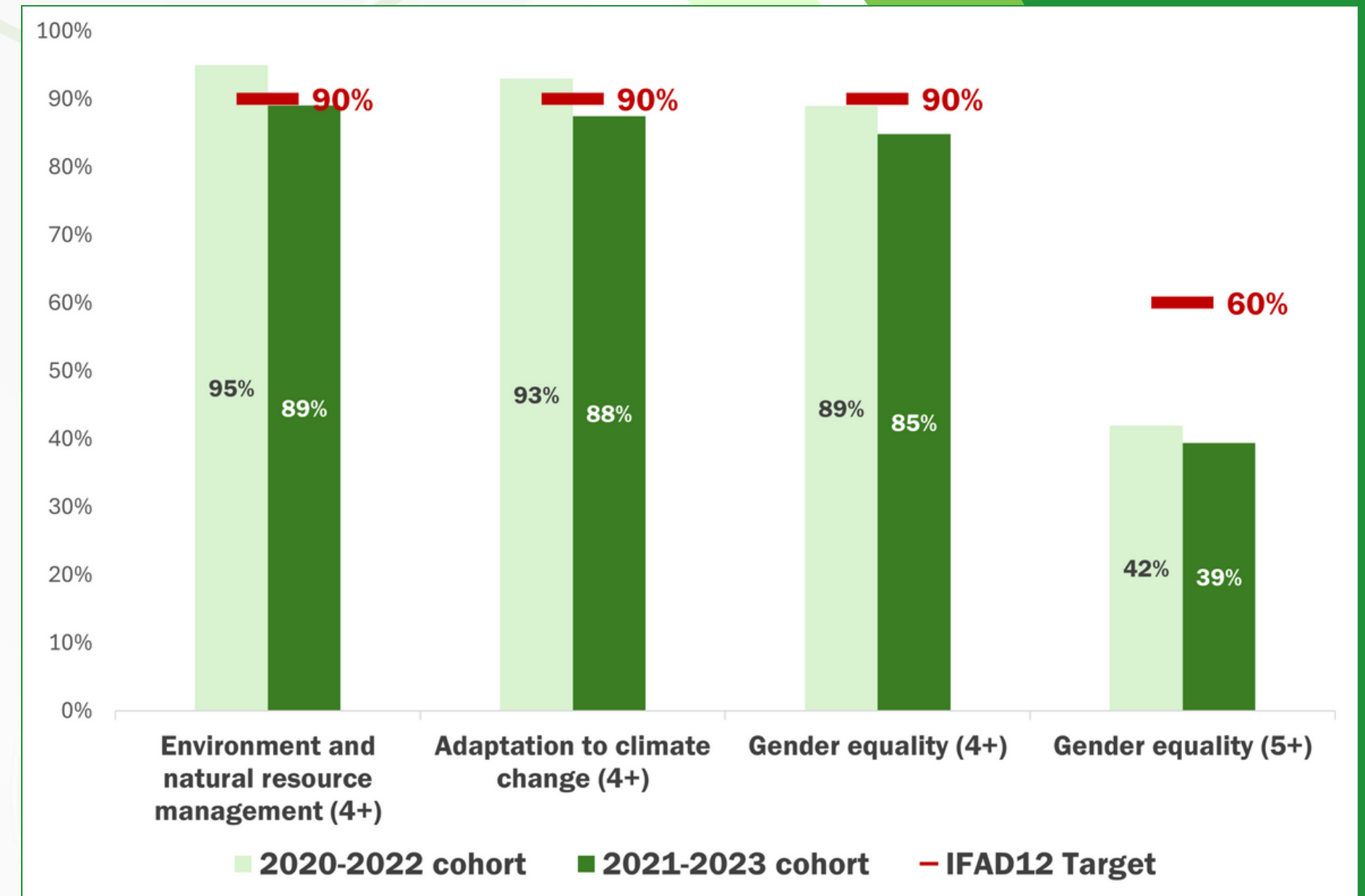
Project-level outcome ratings related to mainstreaming at completion

Climate and environment on track, gender below target (especially +5 ratings)

- GEWE falling below the aspirational target of 60% for projects rated as satisfactory (5+)
- Factors contributing to challenges in achieving target:
 - fragility
 - lack of data
 - ratings refer to projects designed as early as IFAD9
 - shocks (i.e. COVID19)

Actions to improve GEWE performance:

- ✓ Updated approach for operating in fragile situations
- ✓ All regions, in partnership with ECG, are implementing action plans to improve performance by the end of IFAD12 and beyond
- ✓ Updated GEWE policy and Action Plan in IFAD13



Adaptation for Smallholder Agriculture Programme (ASAP)

Status

- ASAP1 funded interventions in 44 IFAD-supported projects across 41 countries
- Portfolio set to complete in 2025
- Disbursement strong despite difficult contexts (currently at 80%)
- In 2023, received "A" rating in the UK's program completion review



7 million people more resilient to climate change

Brought 1.6 million hectares of land under climate-resilient practices

Helped sequester over 60 million tons of carbon dioxide equivalents

Almost 400,000 households with increased water availability

Way forward



Focus on four action areas to build on learning and address challenges from IFAD11 and IFAD12 and prepare to meet even more ambitious targets of IFAD13

Enhanced implementation performance and monitoring

- Boost PMU capacity from early implementation stage
- Ensure adequate staffing, enhance roster of consultants, foster communities of practice
- Close monitoring of portfolio, including through advanced technologies (GIS, RS, etc.)

New policies and strategies

- New strategy for environment, climate, and biodiversity
- Updated gender policy
- Revised Action Plans for Nutrition, Youth and Gender

Strategic partnerships and engagement

- Continue to build on country's M&E systems
- Expand and foster strategic partnerships to drive innovation
- Private Sector Engagement

Building evidence and value for money propositions

Harnessing evidence from impact assessments, corporate evaluations, SECAP studies to strengthen value for money propositions for borrowers

Q&A Session

Open to Questions and Discussion

