

IOE



Investing in rural people

Independent Office of Evaluation



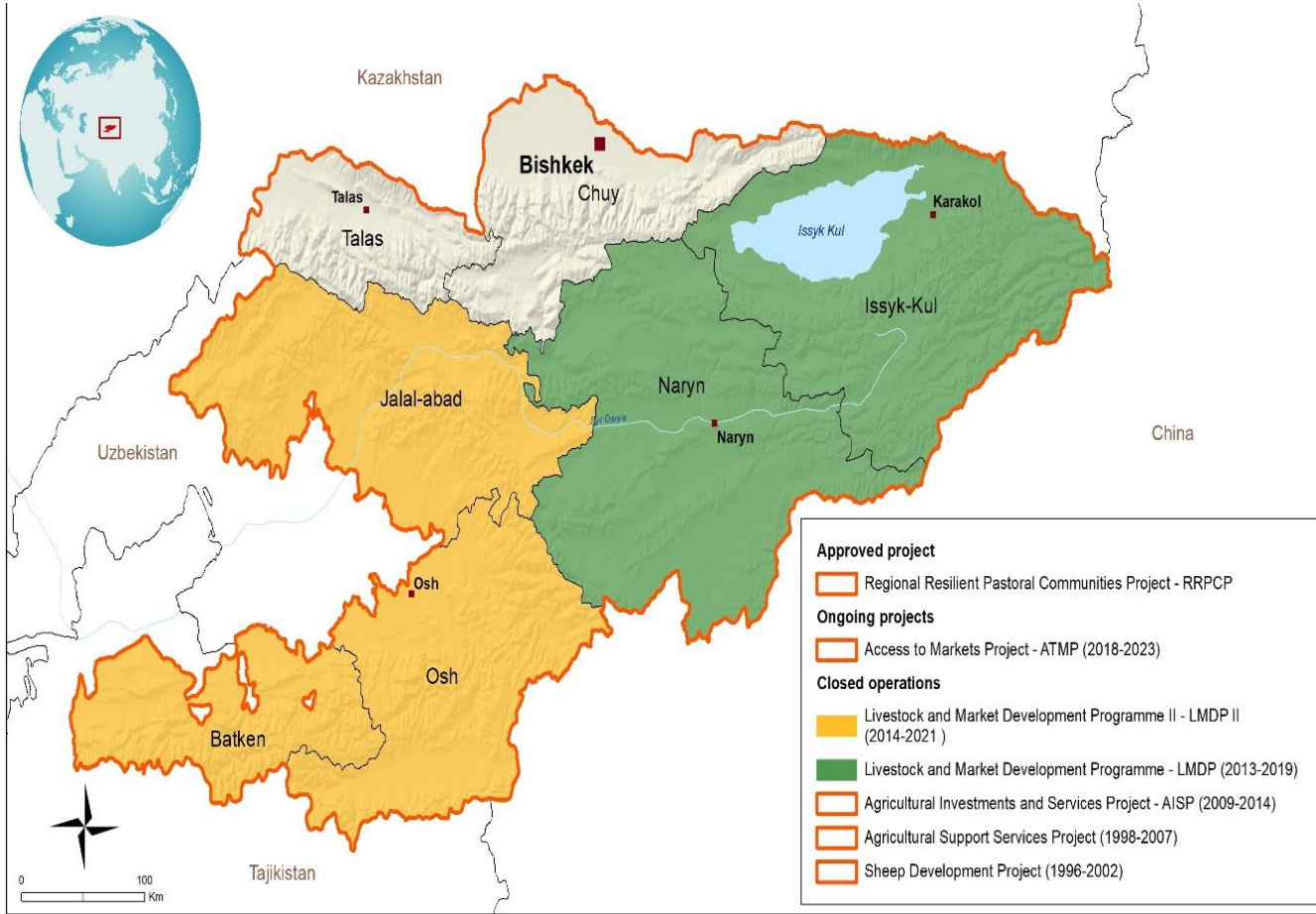
Evaluation  
Committee

121<sup>st</sup> session

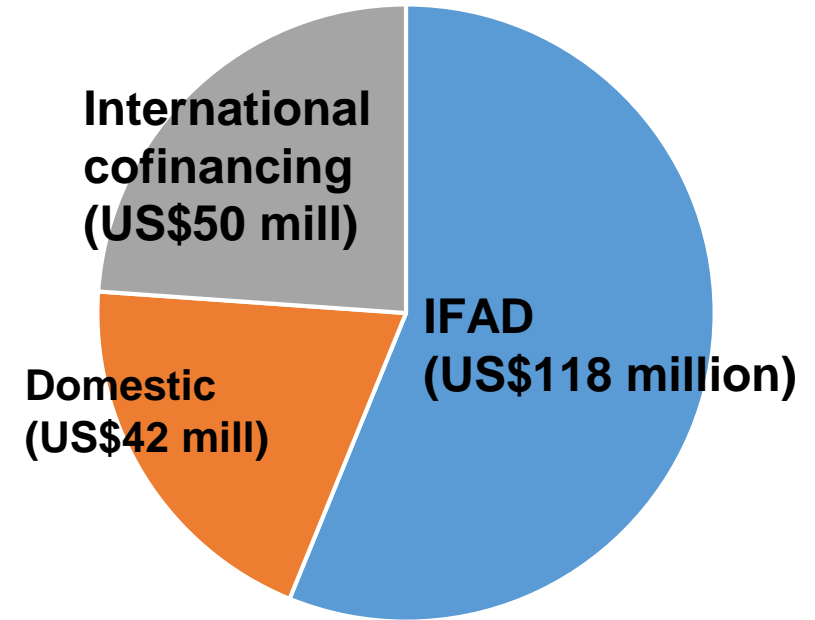
## Kyrgyz Republic: IFAD Country Strategy and Programme Evaluation

*Key findings and recommendations*

21 June 2023



- CSPE scope: IFAD supported programme 2009-2021
- Investment portfolio covered 5 projects (total cost US\$209 mill):



The designations employed and the presentation of the material in this map do not imply the expression of any opinion whatsoever on the part of IFAD concerning the delimitation of the frontiers or boundaries, or the authorities thereof.  
Map compiled by IFAD | 26-01-2022

- ❑ Consistent and comprehensive support in the livestock sector, especially on pasture governance and veterinary services
- ❑ Numerous innovations supported – complementing efforts by other partners, for example:
  - ✓ Scholarship to promote young vets
  - ✓ Early warning system/ weather alerts for pasture users
  - ✓ Gender Action Learning System (GALS)



## □ Notable results and impact at field level:

- ✓ Improved access to remote pastures
- ✓ Better pasture use planning and coordination
- ✓ Improved access to veterinary services, reduction in animal disease
- ✓ Improved human health due to zoonotic disease control

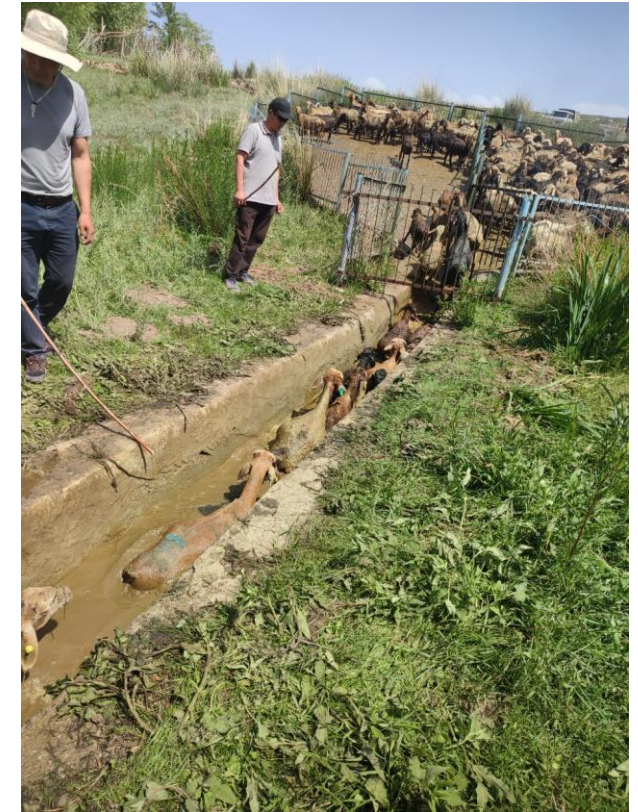


## □ Far-reaching impact on institutions and policies:

- ✓ Community-based pasture management
  - ✓ Enabling framework for private veterinary services
  - ✓ Animal identification system for improved food safety and access to markets
  - ✓ Veterinary education and training
- *important foundations for institutionalization and scaling up*



- ❑ Sustainability – good prospect and positive factors:
  - ✓ Embedded pasture fee collection mechanism
  - ✓ Maintenance of local-level public infrastructure
  - ✓ Pasture committees well-integrated at local government level
  - ✓ Farmers' willingness to pay for private vet services
- ❑ Effective collaboration and partnerships – national (e.g. university, pasture union association) and international partners (e.g. WB, GIZ, FAO, OIE\*)
- ❑ Contribution to studies and analytical work, support enabling environment and policy issues



\* OIE: World Organization for Animal Health

- ❑ Insufficient attention to improvement and sustainable management of pastures (greater interest in expansion of accessible pastures)
- ❑ Limited progress in improving livestock breeds and productivity
- ❑ Support to pasture management and veterinary services largely inclusive – but room to incorporate targeted measures for poor and vulnerable households
- ❑ Limited efforts in the portfolio to promote women's participation and their empowerment – though starting
- ❑ Limited progress on access to markets, with lack of clarity on additionality by project investments



- ❑ Significant delays in project preparation process, start-up, implementation in recent projects
- ❑ Evidence of increased livestock incomes – but driven more by larger number of animals (supported by remittances) than productivity improvement or better access to markets
- ❑ Concerns / threats to sustainability
  - ✓ Turnover of pasture committee heads, tools/mechanism not adapted to facilitate passing on knowledge and skills
  - ✓ Political risk on the pasture reform initiative
  - ✓ Ageing and shortage of vets in rural areas



- ❑ IFAD has increased its technical leadership in supporting the livestock sector, with consistent support
- ❑ The performance and achievements in pasture governance /management and veterinary services – remarkable overall
- ❑ However, some challenges have not been strategically tackled (e.g. pasture degradation, shortage of vets)
- ❑ Support inclusive and extensive – but room to strengthen poverty and gender focus
- ❑ Weak performance in market-oriented interventions





1. Carefully revisit the strategic thrusts, a mix of thematic, sectoral and geographical focus with stronger poverty orientation, e.g. in livestock-related interventions, or examining the scope for supporting non-livestock economic opportunities (e.g. crop, off-farm)
2. Adopt a strategic approach to pro-poor value chain and cluster development
3. Focus on consolidating the achievements in pasture management and veterinary services and their sustainability
4. Strengthen the approach to supporting gender equality and women's empowerment



**Thank you for your  
attention**