

Document:	<u>EB 2009/98/R.29/Rev.1</u>
Agenda:	<u>17(b)(iii)</u>
Date:	<u>17 December 2009</u>
Distribution:	<u>Public</u>
Original:	<u>English</u>

**A**



تمكين السكان الريفيين الفقراء  
من التغلب على الفقر

:

**Claus Reiner**

+39 06 5459 2797 :

[c.reiner@ifad.org](mailto:c.reiner@ifad.org) :

:

**Deirdre McGrenra**

+39 06 5459 2374 :

[d.mcgrenra@ifad.org](mailto:d.mcgrenra@ifad.org) :

**ii**

**iii**

**iv**

**1**

-

1

-

1

-

2

-

3

-

4

-

4

-

5

-

5

-

6

-

6

-

7

-

**7**

-

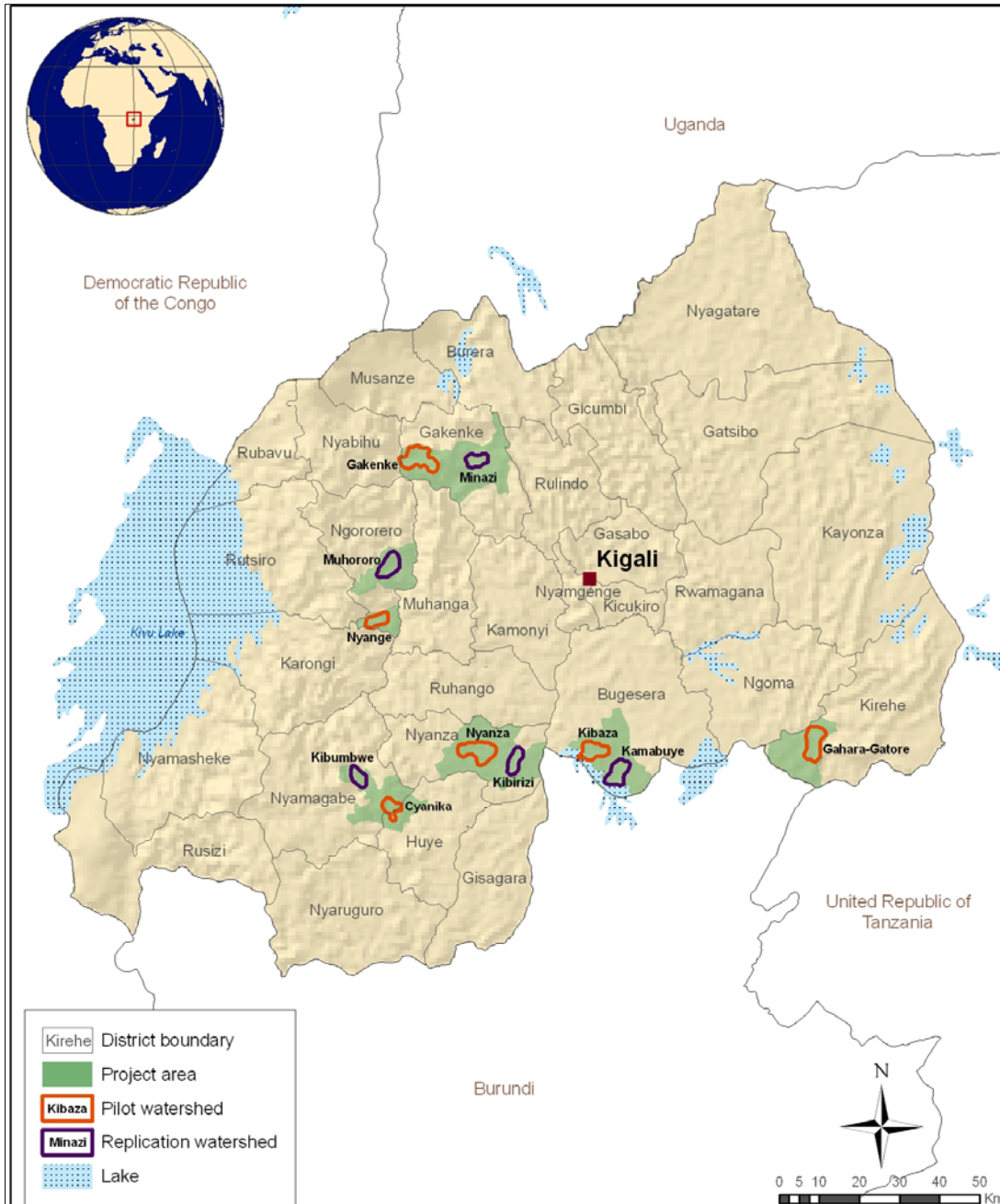
**7**

-

-

-





			:	
				:
		33.05	:	
3	)	1.87		
	(			:
		40		
10				:
(%0.75)		8.58	:	
		0.22		
			:	
		2.66	:	
5.41	:			
		4.96	:	
		0.06	:	
			:	
		2.76	:	
		3.67	:	
			:	
			:	

				-
				-
				-1
				-
	1.87			-2
		(	3	)
2005	/			
				.(EB 2005/85/R.20/Rev.1)
	2009-2007			-3
2008	/		29.77	
			20.45	
				-4

-5

-6

-7

-8

(1) :

-9

(3)

(2)

-

-10

(2)

(1) :

(4)

(3)

(

)

40,000

-11

11



. /

-12

-

-13

-14

-15

2010-2007

-16

(2)

(1) :

(3)

(4)

(5)

(6)

-

-17

-18

-

-19

( 24) (1) :

- 1.1 :

- 1.3

- 1.2

( 61)

(2) . - 1.4

- 2.1 :

- 2.2

- 2.4

- 2.3

( 15)

(3)

-20

				-
(3)	(2)	(1) :	(4)	-21
				-22
	4			
	.1-2	1-1		
				-23
			33.05	-24
2.85				
4.00		:		
	8	11		
			1.7	
				-
		:		-25

15

-26

26

-

-27

(1) :

-28

(2)

(3)

(4)

(5)

-29

.( )

-

(1) :

-30

(2)

(3)

-31

-

-32

-

-33

-34

-35

-

-36

:

:

( 1 870 000)

## **Key reference documents**

### **Country reference documents**

Economic Development and Poverty Reduction Strategy, 2008-2012 (The Republic of Rwanda, September 2007)

Strategic Plan for the Transformation of Agriculture in Rwanda – Phase II (Ministry of Agriculture and Animal Resources, December 2008)

### **IFAD reference documents**

Rwanda Country Programme Evaluation Report (July 2006)

Support Project for the Strategic Plan for the Transformation of Agriculture (PAPSTA) - Project Appraisal Report (July 2005)

Support Project for the Strategic Plan for the Transformation of Agriculture (PAPSTA) - Mid-term Review Report (May 2009)

Rwanda Country Strategic Opportunities Programme (October 2007)

Carbon Finance Document – Hilltop Reforestation Rwanda (draft, October 2009)

### **Other miscellaneous reference documents**

SWAp MOU and road map

## Logical framework

Summary	Performance questions and target indicators	Assumptions
<b>Goal</b>		
<b>To contribute to achieving the EDPRS objective of rural poverty reduction through implementation of the PSTA II.</b>	<ul style="list-style-type: none"> <li>- Evolution of RIMS basic socio-economic impact indicators (MDG)</li> <li>- Rate of reduction in the prevalence of extreme poverty (MDG).</li> <li>- Number of households with improved food security (RIMS).</li> <li>- 76 000 individuals receiving project services, by gender (RIMS).</li> </ul>	<ul style="list-style-type: none"> <li>- Economic and social stability.</li> <li>- MINAGRI's gender strategy approved.</li> <li>- Continued government determination to combat poverty.</li> </ul>
<b>Component purposes</b>		
<b>To increase agricultural revenues and improve nutrition of poor rural people, by implementing PSTA II priority programmes through an environmentally sustainable and market-based intensification of agricultural and livestock production.</b>	<ul style="list-style-type: none"> <li>- Increased level of marketed production of crops, livestock products.</li> <li>- Operation and maintenance of affordable irrigation facilities.</li> <li>- Steady improvement in the natural resource base in Watersheds</li> </ul>	<ul style="list-style-type: none"> <li>- MTEF allocates share to agriculture</li> <li>- Effective implementation of PSTA.</li> <li>- Implement the National Land policy.</li> </ul>
<b>Expected outputs</b>		
<b>1. Reinforced institutional, professional and technical capacities of MINAGRI and its Boards, participating district institutions, including farmer organisations, and strengthened coordination, efficiency and effectiveness in the implementation and delivery of PSTA II priority programmes.</b>		
Coherence of institutional architecture, strategic planning processes, policies and programmes, across the agricultural sector strengthened in support of the PSTA II.	<ul style="list-style-type: none"> <li>- Percentage of agricultural portfolio implemented through the SWAp Secretariat.</li> <li>- Number of MINAGRI district fora held.</li> <li>- M&amp;E/MIS and knowledge management systems are functional.</li> <li>- Coordination systems for the agricultural sector are functional.</li> </ul>	<ul style="list-style-type: none"> <li>- Continued consensus on the agricultural SWAp among government and development partners.</li> </ul>
Increased technical, managerial and institutional efficiency of MINAGRI, its Boards and farmers apex organizations in service delivery of PSTA II.	<ul style="list-style-type: none"> <li>- Reorganisation Action Plan for MINAGRI approved.</li> <li>- Number of capacity building projects implemented through the Capacity Building Facility.</li> <li>- Number of professional staff trained in MINAGRI and its Boards, as well as in apex organisations.</li> </ul>	<ul style="list-style-type: none"> <li>- Continued political support for MINAGRI reorganisation.</li> <li>- Attractive remuneration packages are able to retain performing staff.</li> </ul>
Farmer cooperatives strengthened and communities' access to required services enhanced within a new and rural poor oriented partnership	<ul style="list-style-type: none"> <li>- Percentage of farmers receiving direct services from cooperatives (technical advice, training and support on production and marketing).</li> <li>- 6 community innovation centres are functional.</li> <li>- Number of active cooperatives in the project area.</li> </ul>	<ul style="list-style-type: none"> <li>- Continued conducive environment for community participation.</li> </ul>
Effective marketing arrangements are in place	<ul style="list-style-type: none"> <li>- 11 market information bases are functional in the participating watersheds.</li> <li>- Number of value chain action plans approved by the PCU.</li> </ul>	<ul style="list-style-type: none"> <li>- Private sector responds well to rural business opportunities.</li> </ul>
<b>2. Increased efficiency in agricultural and livestock production with a positive effect on the natural resource base.</b>		
Watershed basins protected through erosion control and carbon sequestration.	<ul style="list-style-type: none"> <li>- 11 coherent Watershed Management Plans developed and implemented.</li> <li>- Effective Water Users' Associations operate without external assistance and mobilise fees for system maintenance and repairs.</li> <li>- 500 ha of degraded hilltops reforested</li> </ul>	<ul style="list-style-type: none"> <li>- Local government respects community identified priorities.</li> <li>- Carbon finance programme is approved by UNFCCC.</li> </ul>
Integrated crop and livestock production intensified.	<ul style="list-style-type: none"> <li>- Number of households receiving pass-on animals.</li> <li>- Number of farmers (by gender) trained in intensified crop production and commercialization.</li> <li>- Number of farmers (by gender) reporting yield increases of major production systems.</li> <li>- 6 milk collection centres are operational.</li> </ul>	<ul style="list-style-type: none"> <li>- Continued availability of WFP contributions for food-for-work.</li> <li>- No new outbreaks of major epidemic animal diseases in countries of the region.</li> </ul>
Intensified irrigated cultivation in marshlands and on hillsides.	<ul style="list-style-type: none"> <li>- Number of water user associations constituted and functional.</li> <li>- 10 000 rice growers trained in SRI, including at least 40% women.</li> <li>- Full utilization of the irrigated command area. (150 ha).</li> </ul>	
Applied and adaptive research supports the transformation of smallholder agricultural production.	<ul style="list-style-type: none"> <li>- Number of farmers participating in participatory research trials, by gender.</li> <li>- Number of FFS operational.</li> </ul>	<ul style="list-style-type: none"> <li>- Continued paradigm shift in Rwanda Agriculture Board/ ISAR towards participatory research</li> </ul>

