

Document: EB 2018/125/R.11  
Agenda: 3(e)(iv)  
Date: 14 November 2018  
Distribution: Public  
Original: English

**A**



الاستثمار في السكان الريفيين

## خطة عمل الصندوق الخاصة بالشباب الريفي 2021-2019

مذكرة إلى السادة ممثلي الدول الأعضاء في المجلس التنفيذي  
الأشخاص المرجعيون:

نشر الوثائق:

الأسئلة التقنية:

**Deirdre McGrenra**

مديرة شؤون الهيئات الرئاسية  
رقم الهاتف: +39 06 5459 2374  
البريد الإلكتروني: gb@ifad.org

**Paul Winters**

نائب الرئيس المساعد  
دائرة الاستراتيجية والمعرفة  
رقم الهاتف: +39 06 5459 2189  
البريد الإلكتروني: p.winters@ifad.org

**Margarita Astralaga**

مديرة شعبة البيئة، والمناخ، والتمايز بين الجنسين،  
والإدماج الاجتماعي  
رقم الهاتف: +39 06 5459 2151  
البريد الإلكتروني: m.astralaga@ifad.org

**Tom Mwangi Anyonge**

الأخصائي التقني المسؤول في شؤون الشباب، والتنمية  
الريفية، والمؤسسات  
رقم الهاتف: +39 06 5459 2519  
البريد الإلكتروني: t.anyonge@ifad.org

المجلس التنفيذي - الدورة الخامسة والعشرون بعد المائة  
روما، 12-14 ديسمبر/كانون الأول 2018

للموافقة

## المحتويات

|    |  |
|----|--|
| 1  | أولا - لماذا الشباب الريفي ولماذا خطة عمل خاصة بالشباب الريفي؟                     |
| 1  | ثانيا - عملية الإعداد لخطة العمل الخاصة بالشباب الريفي                             |
| 1  | ثالثا - نظرية التغيير وإطار النتائج  |
| 5  | رابعا - المواضيع الأساسية  |
| 5  | خامسا - مجالات الإجراءات   |
| 6  | مجالات الإجراءات الأول: إيصال برامج قطرية حساسة لقضايا الشباب                      |
| 7  | مجالات الإجراءات الثاني: تعزيز القدرة على التنفيذ                                  |
| 7  | مجالات الإجراءات الثالث: إدارة المعرفة المستندة إلى الأدلة والاتصالات الاستراتيجية |
| 8  | مجالات الإجراءات الرابع: الاتخراط السياساتي وإرساء الشراكات وتعبئة الموارد         |
| 8  | سادسا - تعبئة الموارد  |
| 8  | سابعا - تنفيذ خطة العمل  |
| 9  | إطار النتائج والخط الزمني للأنشطة (حسب مجال الإجراءات) للفترة 2019-2021            |
| 14 | المعالم البارزة الرئيسية للتنفيذ   |

## الملاحق

الملحق الأول: إطار النتائج والخط الزمني للأنشطة (حسب مجال الإجراءات) للفترة 2019-2021  
الملحق الثاني: المعالم البارزة الرئيسية للتنفيذ

## الذيل

خطة عمل الصندوق الخاصة بالشباب الريفي 2019-2021

## توصية بالموافقة

المجلس التنفيذي مدعو للمصادقة على خطة عمل الصندوق الخاصة بالشباب الريفي للفترة 2019-2021.

### خطة عمل الصندوق الخاصة بالشباب الريفي للفترة 2019-2021

#### أولاً - لماذا الشباب الريفي ولماذا خطة عمل خاصة بالشباب الريفي؟

- 1- يعيش معظم الشباب في العالم، وعددهم 1.2 مليار شاب - أي ما يعادل 88 بالمائة - في المناطق الريفية من البلدان النامية، و75 مليون منهم عاطل عن العمل. وتمثل التنمية الزراعية فرصة للإيفاء بطموحات الشباب للحصول على عمل مستقر، والوصول إلى الخدمات الاجتماعية، والتي غالباً ما تكون غائبة في المناطق الريفية. وتمثل هذه الطموحات عوامل "دفع" مشتركة تشجع على زيادة الهجرة.
- 2- تمنح خطة العمل الخاصة بالشباب الريفي الصندوق فرصة فريدة من نوعها للعب دور مركزي في تحويل المناطق الريفية ضمن البلدان النامية، والمساهمة في تحقيق أهداف التنمية المستدامة. ويعتبر ذلك أولوية رئيسية من أولويات التجديد الحادي عشر لموارد الصندوق المنعكسة في الإطار الاستراتيجي للصندوق للفترة 2016-2025. وتكمن خيرة الصندوق الفريدة من نوعها في استهدافه القوي للسكان مدعي الفقر وإيصاله لحلول مختبرة بصورة جيدة ولتدخلات قطرية مخصصة. وسوف يسهم الصندوق في إيجاد الخيارات والفرص للتمكين الاقتصادي، وخلق بيئة تمكينية يمكن للشباب أن يزدهروا فيها. كذلك تمكّن مرونة الصندوق من اختبار الأفكار والنهج الابتكارية في التنمية الريفية، التي يمكن الاستفادة منها في الانخراط القطري طويل الأمد باستخدام البرامج التي يمولها الصندوق وتملكها الحكومات كنقاط دخول.

#### ثانياً - عملية الإعداد لخطة العمل الخاصة بالشباب الريفي

- 3- كانت عملية الإعداد لخطة العمل هذه عملية شمولية وتشاركية انطوت على سلسلة من المناقشات والاستعراضات والمشاورات المعمقة مع منظمات الشباب والشركاء الرئيسيين. وبالإضافة إلى ذلك، فقد تضمن إعداد خطة العمل هذه مسّحين ومدخلات إضافية من حلقة عمل للثبّت لأصحاب المصلحة، ومناقشة غير رسمية للمجلس التنفيذي في 6 يوليو/تموز 2018 واستعراض للمجلس التنفيذي بتاريخ 11 سبتمبر/أيلول 2018. ويقدر الصندوق الدعم الذي وفرته الدول الأعضاء والشركاء على مدى الأشهر العديدة السابقة التي استهلكها إعداد خطة العمل هذه.

#### ثالثاً - نظرية التغيير وإطار النتائج

- 4- تكمن نظرية التغيير لخطة العمل هذه في التزام الصندوق بالمساهمة الكفؤة والفعالة في أهداف التنمية المستدامة الأول والثاني والثامن، وفي خطة 2030 الأوسع، من خلال زيادة عمالة الشباب (انظر الشكل 1). ومع أن تحديات إيجاد فرص العمل مشتركة بين جميع السكان الريفيين الفقراء، إلا أن الشباب هم الأكثر معاناة منها. وتتضمن آثار هذه التحديات على الشباب عدم امتلاكهم للأراضي والإقصاء المالي

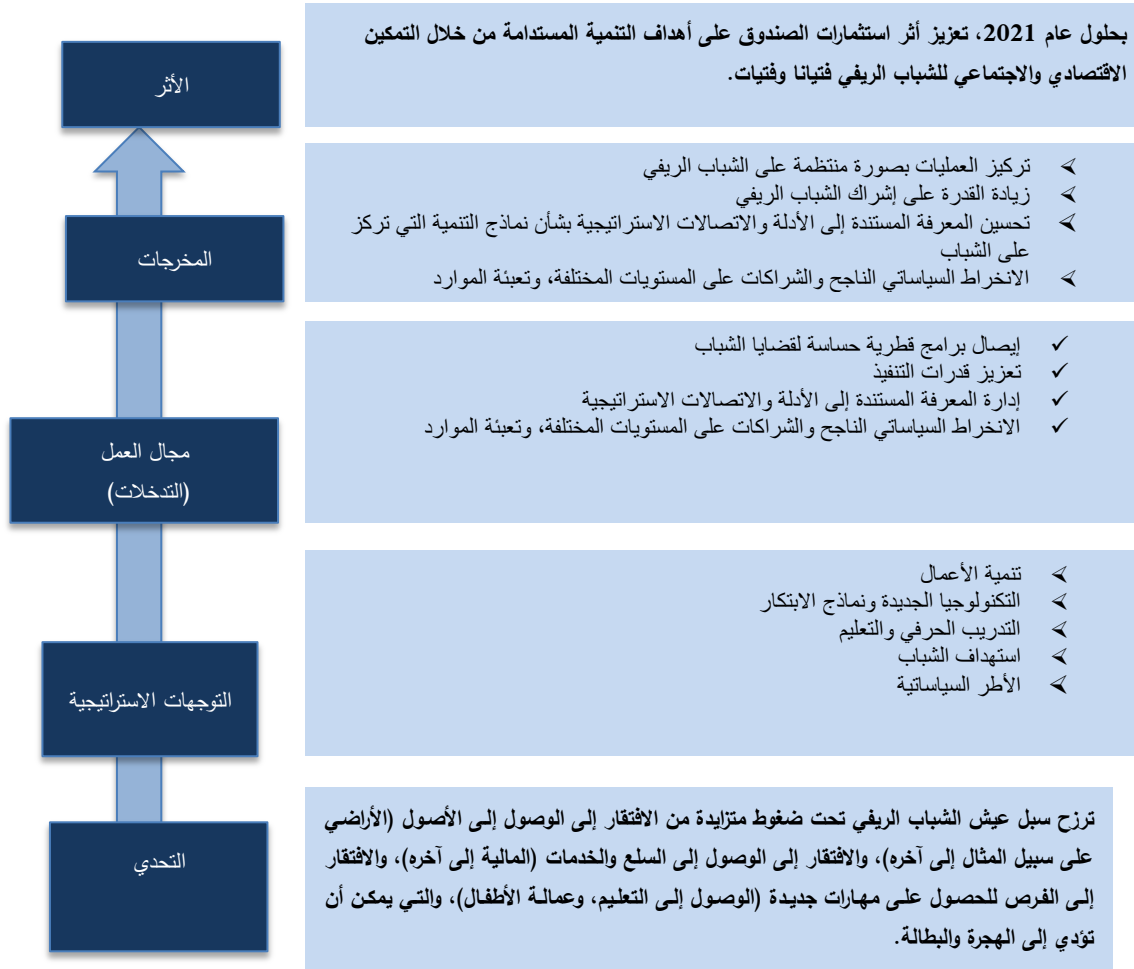
وعمالة الأطفال في الزراعة والهجرة. والصندوق ملتزم بتحسين حياة الشباب الريفي من خلال أربعة مجالات عمل في خطة العمل هذه، عبر تبني نهج متميز قطري مخصوص للبرمجة التي تراعي قضايا الشباب.

5- تهدف تدخلات الصندوق المناصرة للشباب إلى تعزيز التمكين الاقتصادي في قطاع الأغذية والزراعة وفي الاقتصاد الريفي بأسره، من خلال توفير قائمة شاملة بالتدخلات التي تتضمن: (1) التدريب الحرفي والتقني؛ (2) خدمات تنمية الأعمال؛ (3) الائتمان والتمويل الرأسمالي للمشروعات التي يمتلكها الشباب واستهلاك هذه المشروعات؛ (4) الاستثمار في الميكنة واستخدام التكنولوجيا الحديثة، بما في ذلك تكنولوجيا المعلومات والاتصالات؛ (5) الاستخدام المنتج لتحويلات المهاجرين لتحفيز الاستثمار في التنمية الريفية؛ (6) إدارة المخاطر الزراعية؛ (7) الأنشطة الرامية إلى إشراك الشباب في هياكل حوكمة منظمات المزارعين ورابطات وتعاونيات الشباب.

6- ومن خلال هذه التدخلات بأسرها، يكمن هدف خطة العمل في تعزيز أثر استثمارات الصندوق على أهداف التنمية المستدامة من خلال التمكين الاجتماعي والاقتصادي للشباب الريفي فتيانا وفتيات. وأما هدفها الأساسي فهو تعميم التركيز على الشباب ضمن عمليات الصندوق، مدعوماً بمخرجات ونواتج مجالات العمل الأربعة: (1) إيصال البرامج القطرية المراعية لقضايا الشباب؛ (2) تعزيز قدرات التنفيذ؛ (3) إدارة المعرفة المستندة إلى الأدلة والاتصالات الاستراتيجية؛ (4) الانخراط السياساتي وإرساء الشراكات وتعبئة الموارد (انظر الملحق 1).

الشكل 1:

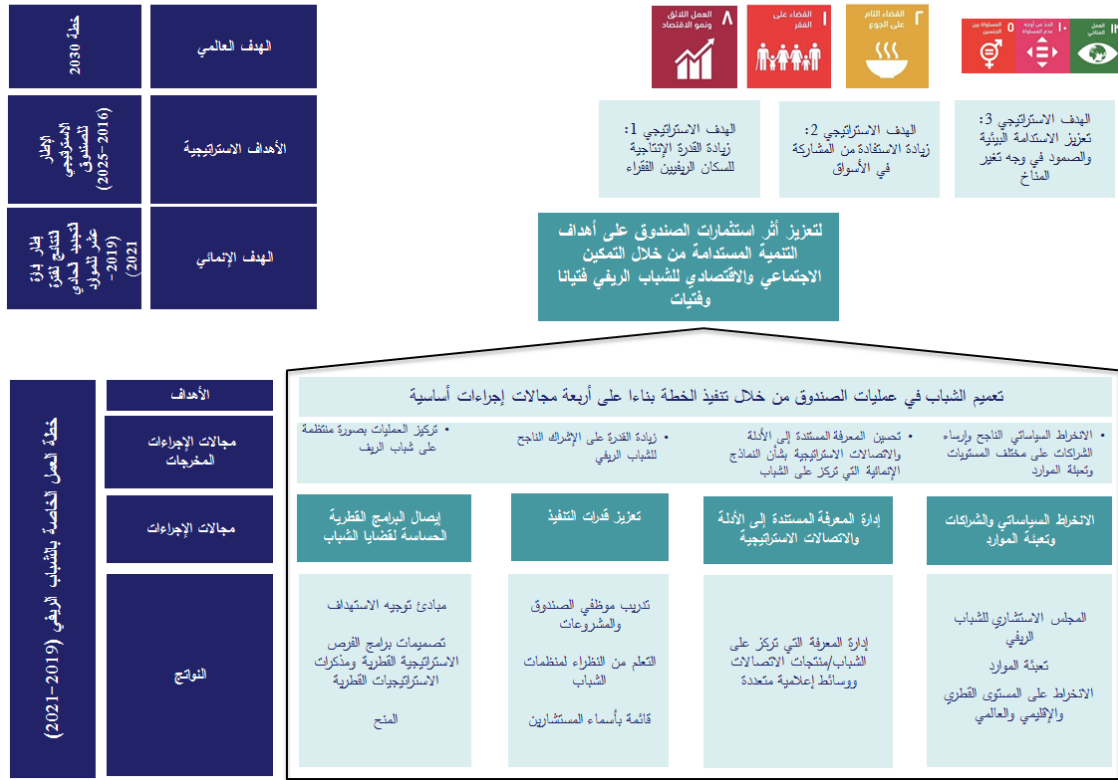
## نظرية التغيير



7- إطار النتائج. لتعزيز الروابط مع إطار إدارة النتائج لفترة التجديد الحادي عشر للموارد،<sup>1</sup> تمت هيكلة إطار إدارة نتائج خطة العمل على ثلاثة مستويات (انظر الشكل 2). وهي تتضمن: (1) مستوى مجالات العمل، التي سيتم من خلاله تعميم قضايا الشباب عبر جميع عمليات الصندوق، بما يتماشى مع نتائج الصندوق على مستويي النواتج والمخرجات؛ (2) تواءم هدف هذا الإطار مع الأهداف الاستراتيجية للصندوق كما هو منصوص عليها في الإطار الاستراتيجي للصندوق للفترة 2016-2025؛ (3) إطار إدارة نتائجه، والذي يشير إلى أهداف التنمية المستدامة التي ستسهم بها خطة العمل هذه بصورة مباشرة. وسوف تسهم جميع مخرجات خطة العمل في تحقيق نتائج التجديد الحادي عشر لموارد الصندوق، كما هي مفصلة أدناه

<sup>1</sup> يرد شرح لإطار إدارة النتائج على ثلاثة مستويات في: الصندوق (2018) تقرير هيئة المشاورات الخاصة بالتجديد الحادي عشر لموارد الصندوق - عدم ترك أي أحد يتخلف عن الركب: دور الصندوق في خطة 2030.

## الشكل 2: إطار نتائج الصندوق الخاص بالشباب



8- **الرصد والتقييم.** سوف يتم قياس الأداء الإجمالي على خلفية نتائج ومخرجات مختارة في إدارة النتائج لفترة التجديد الحادي عشر لموارد الصندوق. وسوف ترصد النواتج والمخرجات النوعية من خلال استخدام المؤشرات<sup>2</sup> الأساسية في الصندوق وسيتم جمع النتائج من نظم رصد وتقييم المشروعات وعكسها في نظم إدارة النتائج التشغيلية في الصندوق. وسوف تستخدم المعلومات الكمية والنوعية معا لتغذية تقرير الفعالية الإنمائية للصندوق.

9- وبالفعل، فقد تم اتخاذ إجراءات آنية لتحديد معايير لرصد مدى تعميم الصندوق للتركيز على الشباب في مشروعاته. وكجزء من الإعداد لتنفيذ خطة العمل هذه، فإن الصندوق يجمع المعلومات من خلال استعراض مكتبي لعينة من مشروعات التجديد التاسع للموارد، وبالبناء على العمل الذي أجرته بالفعل شعبة البحوث وتقدير الأثر في الصندوق. وستستخدم نتائج مسح الأساس كنقطة مرجعية أولية لنتائج، بهدف تعميم الشباب في تصميم ما لا يقل عن 50 بالمائة من مشروعات الصندوق و100 بالمائة من برامج الفرص الاستراتيجية القطرية للصندوق خلال فترة التجديد الحادي عشر للموارد. وبناء على العمل الذي أجراه الصندوق على مواضيع التغذية والنمايز بين الجنسين، سوف يساعد هذا الاستعراض المكتبي على تحديد المنهجية، بما في ذلك مؤشرات العينة لتقرير أي من المشروعات وبرامج الفرص الاستراتيجية القطرية يمكن اعتبارها حساسة لقضايا الشباب.

<sup>2</sup> أخذ نظام إدارة النتائج والأثر في الصندوق إلى المستوى التالي (EB 2017/120/R.7/Rev.1).

10- **التعلم.** من خلال الاستخدام الاستراتيجي والمتسق للمنح والبحوث والمعرفة المتخصصة للموظفين، سيتم تقاسم الدروس المستفادة من عمليات الصندوق لتغذي تصميم وتنفيذ المشروعات. وسوف يتم استقطاب الشراكات لضمان حصول فرق الإيصال في المراكز الإقليمية وبلدان التنفيذ على الوصول للمعرفة بهدف دعم الانخراط السياساتي، وتوسيع النطاق والتعاون بين بلدان الجنوب والتعاون الثلاثي. وأما استدامة عملية التعلم هذه فستكون حاسمة وستكون من بين العناصر الرئيسية لجدول أعمال التعلم في الصندوق وبناء قدرات الشركاء المحليين للعمل مع الشباب.

## رابعاً - المواضيع الأساسية

11- تستقطب خطة العمل هذه المزايا النسبية القوية للصندوق في: (1) توفير فرص عمالة الشباب وريادة الأعمال الخاصة؛ (2) الوصول إلى الأراضي والموارد الطبيعية؛ (3) الوصول إلى التمويل الريفي؛ (4) الوصول إلى التكنولوجيات والممارسات الإنتاجية التي تتسم بالصمود في وجه تغير المناخ؛ (5) النماذج التنظيمية المريحة لأصحاب الحيازات الصغيرة. وسيعمل الصندوق مع شركائه لتقصي الخيارات المتاحة للعمل على المواضيع الناشئة المدرجة أدناه. وتتضمن هذه المواضيع الناشئة: (1) العمالة المحترمة؛ (2) عمالة الأطفال في الزراعة؛ (3) القضايا التي تؤثر على الشباب واليافعات والشباب من السكان الأصليين، والشباب الذين يعانون من إعاقات. ومع أن الصندوق يعتبر أن هذه القضايا الناشئة غاية في الأهمية، إلا أنها تتعدى الخبرات التي يمتلكها الصندوق داخلياً، وبالتالي، فإنه سيعزز من شراكاته الاستراتيجية والتشغيلية مع المنظمات التي تقوم بالفعل بالعمل على هذه المواضيع.

## خامساً - مجالات الإجراءات

12- سوف ينطوي هذا النهج على تخطيط وإيصال تشاركي بين دائرة الاستراتيجية وإدارة المعرفة في الصندوق، ودائرة إدارة البرامج فيه لإدماج التركيز على الشباب في البرمجة القطرية. ولن يمكن نهج قطري مخصص متميز الصندوق من الاستجابة للاحتياجات المختلفة للبلدان فحسب، وإنما سيساعد أيضاً على تحديد المحركين الأوائل كي يغدو الصندوق أكثر فعالية في إيصال النتائج على المستوى القطري. وسوف يرى هذا الانخراط الاستراتيجي وضع الأولويات للبلدان بحيث: (1) يثبت إمكانية تسريع الانخراط مع الشباب الريفي (سواءً كان هنالك توجه تجاري واضح في الزراعة أو جدوى تجارية محتملة لزراعة أصحاب الحيازات الصغيرة)؛ (2) يظهر الاستعداد لتقاسم التكاليف والمخاطر في اختبار أفكار جديدة يمكن أن تكون مفيدة للشباب؛ (3) يحفز التيسير والانخراط في التعاون بين بلدان الجنوب والتعاون الثلاثي؛ (4) يمتلك البيئات السياساتية التمكينية لتيسير تصميم سريع للمشروعات وتخصيص الموارد لها بهدف تنفيذ المشروعات الحساسة لقضايا الشباب.

13- وبما يتماشى مع استراتيجية التمايز بين الجنسين في الصندوق، سوف تأخذ الخطة بعين الاعتبار التمايز بين الجنسين عند تعميم قضايا الشباب. إضافة إلى ذلك، سوف يستقطب الصندوق شراكاته مع رابطات وشبكات الشباب الريفي لإدراج الشباب في حوكمة عملياته على المستوى القطري، وإيجاد مجلس استشاري للشباب الريفي على المستوى العالمي. وسيتم تحري إمكانية إشراك ممثلين شباب كأشخاص مرجعيين في

دورات مختارة للمجلس التنفيذي ومجلس المحافظين. وسوف يحل الصندوق ويتعلم من نماذج وكالات الأمم المتحدة (مثل برنامج الأمم المتحدة للبيئة) التي تتمتع بتمثيل مشابه.

#### مجال الإجراءات الأول: إيصال برامج قطرية حساسة لقضايا الشباب

14- كما تنص عليه التزامات التجديد الحادي عشر لموارد الصندوق، سوف يتم تحديث المبادئ التوجيهية للاستهداف في الصندوق لتركز على الشباب الريفيين الفقراء فتيانا وفتيات. وسوف تتم صياغة جميع برامج الفرص الاستراتيجية القطرية، ومذكرات الاستراتيجية القطرية و 50 بالمائة من تصميمات المشاريع الجديدة التي يدعمها الصندوق مع عدسات حساسة لقضايا الشباب لنتضمن: (1) الملامح الاقتصادية الاجتماعية للشباب الريفي؛ (2) الحساسية الثقافية في تقدير المجموعات الفرعية المختلفة، مع إيلاء اعتبار مخصص لعدم التجانس بين هذه المجموعات وإيلاء الاهتمام الكافي للشباب الذين يعانون من إعاقات؛ (3) التشاور مع منظمات الشباب خلال دورة المشروعات بأسرها؛ (4) تحديد واضح للشباب الريفي على أنهم مجموعة مستهدفة في الصندوق ووضع استراتيجية استهداف للوصول إليهم؛ (5) مؤشرات مقسمة حسب العمر لرصد التقدم المحرز. وإضافة إلى ذلك، سوف يتم تشذيب الأدوات التشغيلية للصندوق لجعلها حساسة لقضايا الشباب، وسيتم دعم المشروعات للإبلاغ عن مؤشرات الرصد والتقييم المقسمة حسب العمر. وأخيراً، سيتم إعداد مذكرة توجيهية لانخراط الشباب بتركيز على تنمية الأعمال لضمان الإشراف الفعال للشباب خلال البرمجة القطرية بأسرها.

15- وتتضمن مظاهر التصميم الهادفة إلى تعزيز استهداف الشباب الريفي ما يلي: (1) ميزانية تخصص الموارد المالية لمشاركة الشباب؛ (2) تعيين وتدريب موظفين مكرسين للترويج لإشراك الشباب؛ (3) حصص مخصصة للوصول للشباب؛ (4) أنشطة ترويج للوصول إلى الأراضي والخدمات الإرشادية؛ (5) دعم مراكز حاضنات الأعمال لتعزيز قدرات الشباب كرواد أعمال؛ (6) منتجات مالية (مثل الصندوق الرأسمالي للأعمال الزراعية) وخدمات غير مالية مفصلة لتلائم الشباب (مثل Hello Tractor وهو تطبيق تشاركي على شبكة الانترنت في نيجيريا يساعد الشباب على الوصول لخدمات الجرارات، ويحد من التكاليف الرأسمالية الأولية).

16- ستعمل شعبة البيئة والمناخ والتمايز بين الجنسين والشمول الاجتماعي بصورة وثيقة مع شعبة الإنتاج المستدام والأسواق والمؤسسات ومع الشعب الإقليمية للاستفادة من نوافذ تمويل المنح في الصندوق، بهدف اختبار الأفكار وتطوير النماذج الجديدة، وتعزيز الابتكارات التي يمكن للشباب من خلالها اثبات ميزتهم النسبية لجهة الابتكار والطاقة والقدرة على تحمل المخاطر (مثلا تكنولوجيا المعلومات والاتصالات، والطاقة الريفية). وتتضمن حافظة منح الصندوق الحالية بالفعل العديد من الجهود الابتكارية مع احتمالات قوية للتعميم في حافظة الصندوق بأسرها.

17- ومع أن خطة العمل هذه تغطي الفترة 2019-2021، إلا أنه من الهام بمكان الإشارة إلى أن تعميم الشباب سيستمر بما يتعدى فترة التجديد الحادي عشر لموارد الصندوق. وبالفعل، فإن تعميم قضايا الشباب ممارسة إنمائية جيدة ستستمر كي تستدير بها البرمجة القطرية خلال فترتي التجديد الثاني عشر والثالث عشر للموارد، بما يتماشى مع الإطار الاستراتيجي للصندوق للفترة 2016-2025. ويتوقع أنه وبعد عام 2021، سوف تنمو المشروعات الحساسة لقضايا الشباب بما يتعدى المخرجات المستهدفة المخطط لها وهي 50



بالمائة (60) بالمائة من المشروعات في فترة التجديد الثاني عشر للموارد و70 من المشروعات في فترة التجديد الثالث عشر للموارد).

### مجال الإجراءات الثاني: تعزيز القدرة على التنفيذ

18- سوف تتم تنمية القدرات على مستوى المنظمة من خلال فريق للشباب في مقر الصندوق مع موظفين للتمايز بين الجنسين والشمول الاجتماعي في المراكز الإقليمية لتيسير التعلم من خلال أكاديمية العمليات. وسيتم تعزيز قدرات الإيصال التي يتمتع بها موظفو المشروعات، وموفرو الخدمات وشركاء التنفيذ لتمكينهم من العمل مع الشباب الريفي ومع موظفي الصندوق الآخرين. وعلى مستوى المشروعات، سيتم تطوير قدرات الشباب من خلال أنشطة تعزيز المهارات المتأصلة في عمليات الصندوق، ومن خلال الانخراط المباشر مع الصندوق في المجلس الاستشاري للشباب الريفي.

19- سوف يعمق الصندوق من تعاونه مع منظمة الأغذية والزراعة للأمم المتحدة ومنظمة العمل الدولية، بما في ذلك من خلال ترتيبات على المستوى الميداني لتدريب موظفي الصندوق وموظفي المشروعات ودعم الانخراط السياساتي مع صناعات السياسة الوطنية وشركاء التنفيذ. وسوف يوفر الصندوق دعم التنفيذ لجميع المشروعات التي تضم الشباب الريفي كفتة مستهدفة رئيسية بهدف توليد منتجات معرفية ابتكارية للتعلم بين الأقاليم. وسوف تدعم هذه الأنشطة إعداد النواتج في مجال الإجراءات الثالث.

20- سيكون التركيز أيضا على تعزيز قدرات المنظمات التي يقودها الشباب في المهارات الفردية والنظم التنظيمية، والاستفادة من تنوع أساليب التعلم والأدوات المتاحة مثل المنهجيات الأسرية، ومدارس المزارعين الميدانية ومدارس أعمال المزارعين ومدارس تعلم المهارات الحياتية للشباب وسبل التعلم. وسوف تنظم المراكز القطرية مكافآت سنوية اعترافا بأفضل المشروعات الحساسة لقضايا الشباب أداءً. ولن توفر هذه المسابقات فرصا للتعلم فحسب، وإنما ستيسر من التبادل على المستوى المحلي وتولد البيانات لوضع الخرائط لتدخلات الصندوق الحساسة لقضايا الشباب الريفي في العالم بأسره. وسوف يستتير بممارسة وضع الخرائط هذه التعاون بين بلدان الجنوب والتعاون الثلاثي.

### مجال الإجراءات الثالث: إدارة المعرفة المستندة إلى الأدلة والاتصالات الاستراتيجية

21- للمساهمة في الانخراط السياساتي والتحسين المستمر للمشروعات، مع زيادة وضوح صورة الصندوق في السعي لجدول أعمال للشباب، سوف تبني هذه الخطة على قاعدة أدلة من أنشطة الرصد والتقييم، وتوثيق الممارسات الجيدة، وتقاسم المعرفة الاستراتيجية. وسوف يستقطب الصندوق ميزته النسبية في التعاون بين بلدان الجنوب والتعاون الثلاثي، وذلك للعمل كوسيط للشراكات المستندة إلى المعرفة والاستثمارات المحتملة بين أصحاب المصلحة المتعددين. وسوف يتم نشر المعرفة من خلال جملة من المنصات الرقمية والأدوات التقليدية التي تستهدف شرائح مختلفة من جمهور الصندوق، بما في ذلك وسائط التواصل الاجتماعي وموقع الصندوق على شبكة الانترنت.

22- كذلك الصندوق حاليا بصدد إعداد استراتيجية جديدة لإدارة المعرفة لجعل إدارة المعرفة أكثر فعالية ضمن الهيكلية التنظيمية الجديدة للصندوق. وستقوم خطة إدارة المعرفة ونشرها التي ستطور بصورة متزامنة مع خطة العمل هذه، وستكون متوائمة مع استراتيجية إدارة المعرفة المؤسسية في الصندوق. وعندما ستتم

مراجعة استراتيجية الاتصالات في الصندوق، سيتم إدراج الشباب أيضا في النهج الموسع للاتصالات الاستراتيجية عبر قضايا الشباب.

#### مجالات الإجراءات الرابع: الانخراط السياساتي وإرساء الشراكات وتعبئة الموارد

23- **الانخراط السياساتي وإرساء الشراكات.** بالبناء على مجال الإجراءات الثالث، سوف يعمل الصندوق على ما يلي: (1) الانخراط استنادا إلى الأدلة في ما الذي ينجح وما الذي لا ينجح في العمل مع الشباب الريفي؛ (2) المساهمة في الانخراط السياساتي بصورة مباشرة، علاوة من خلال أصحاب المصلحة والشركاء وتيسير الحوار القطري، وتوفير الأدلة ودعم السياسات الوطنية ذات الصلة بالشباب الريفي. ومن الضروري أيضا للصندوق تعزيز وتقوية شراكات، وبخاصة بين المنظمات التي تتميز بميزات نسبية في القضايا المختلفة التي تؤثر على الشباب الريفي على المستوى القطري. وبالإضافة إلى ذلك سوف يدعم الصندوق انخراط المنظمات التي يقودها الشباب عن العمليات السياساتية وإرساء الشراكات بين رابطات وشبكات الشباب الريفي من خلال المجلس الاستشاري للشباب الريفي، والاستعانة بسفير للنوايا الحسنة.

#### سادسا – تعبئة الموارد

24- بدأ مكتب الشراكات وتعبئة الموارد بالفعل بالتعاون مع دائرة الاستراتيجية وإدارة المعرفة بتحري التمويل الإضافي لإرساء الشراكات، من خلال المساهمات التكميلية غير المقيدة والأموال التكميلية. ويتوقع لهذه الأموال أن ترفد الاستثمارات في المجالات الرئيسية مثل نماذج حاضنات ريادة الأعمال. وسيتحرى الصندوق أيضا التمويل الإضافي من خلال المؤسسات، والقطاع الخاص، والوكالات الإنمائية الثنائية التي تهتم بالشباب الريفي. وكذلك فإن الصندوق حريص على استخدام هذا التمويل للتركيز على الاستثمارات والأدوات والنهج الابتكارية، لمعالجة القضايا التي تؤثر على الشباب الريفي. ومن الخيارات الإضافية أيضا، دعم وصول الشباب إلى الصندوق الرأسمالي للأعمال الزراعية، الذي يوفر خليطا من التمويل للمزارعين أصحاب الحيازات الصغيرة في أكثر الأقاليم نأيا من البلدان النامية. ويعترف الصندوق بالدعم الذي تلقاه من الدول الأعضاء ومن المجلس التنفيذي في عملية تعبئة الموارد لتنفيذ خطة العمل هذه.

#### سابعا – تنفيذ خطة العمل

25- سوف تنفذ خطة عمل الشباب الريفي، بما يتماشى مع الهيكلية التنظيمية اللامركزية الجديدة للصندوق. وستدمج شعبة البيئة والمناخ والتمايز بين الجنسين والشمول الاجتماعي خطة العمل في خطط إدارة الشعبة. كذلك ستستق دائرة الاستراتيجية وإدارة المعرفة مع دائرة البرامج والمراكز شبه الإقليمية والمكاتب القطرية لضمان أن يكون لخطة العمل هذه أثار مضاعفة تصل المكاتب القطرية وشبه الإقليمية. وسوف يتضمن فريق الشباب في الشعبة أخصائي تقني مسؤول وخمسة موظفين للتمايز بين الجنسين والشمول الاجتماعي موزعين إقليميا، ومجموعة من المستشارين ذوي الخبرة الذين سيوفرون الدعم التقني لتنفيذ الأنشطة المنصوص عليها في هذه الخطة. وسوف يدعم عمل فريق الشباب أشخاص مرجعيين معينين لقضايا الشباب في الشعب الإقليمية الخمس في الصندوق، أما المعالم البارزة الأساسية للتنفيذ فتد في الملحق الثاني.

## إطار النتائج والخط الزمني للأنشطة (حسب مجال الإجراءات) للفترة 2019-2021

إطار النتائج حسب مجال الإجراءات (مستوى النواتج)

|  |          |  |
|--|----------|--|
| هدف التنمية المستدامة الأول: القضاء على الفقر بجميع أشكاله وفي كل مكان   |          | أهداف التنمية المستدامة (خطة عمل 2030)                             |
| هدف التنمية المستدامة الثاني: القضاء على الجوع وتحقيق الأمن الغذائي وتحسين التغذية والترويج للزراعة المستدامة  |          |  |
| هدف التنمية المستدامة الثامن: الترويج للنمو الاقتصادي المستدام والشمولي، الذي يمكن الإبقاء عليه، والعمالة الكاملة والمنتجة، والعمل اللائق للجميع، وخاصة للشباب، وتحسين الوصول إلى الفوائد والخدمات المالية |          |  |
| هدف التنمية المستدامة الأول: زيادة القدرات الإنتاجية للسكان الريفيين الفقراء   |          |  |
| الهدف الاستراتيجي الثاني: زيادة الفوائد التي يجنيها الفقراء الريفيين من المشاركة في الأسواق  |          | الأهداف الاستراتيجية (الإطار الاستراتيجي للصندوق للفترة 2016-2025) |
| الهدف الاستراتيجي الثالث: تعزيز الاستدامة البيئية وصمود الأنشطة الاقتصادية للسكان الريفيين الفقراء في وجه تغير المناخ  |          |  |
| تعزيز أثر استثمارات الصندوق على تحقيق أهداف التنمية المستدامة من خلال التمكين الاجتماعي والاقتصادي للشباب فتيانا وفتيات  |          |  |
| تعميم قضايا الشباب ضمن عمليات الصندوق، من خلال تنفيذ الخطة بناء على مجالات الإجراءات الأربعة.  |          | الأهداف  |
| خطة العمل الخاصة بالشباب الريفي (2019-2021)  |          |  |
| مجال الإجراءات الأول: إيصال البرامج القطرية الحساسة لقضايا الشباب  |          |  |
| تعميم الشباب الريفي ضمن المشروعات الاستثمارية للصندوق واستراتيجياته القطرية ومنحة القطرية والإقليمية والعالمية   |          |  |
| المخرج   | المؤشرات | وسائل التثبيت  |

|   |   |  |
|---|---|--|
| <ul style="list-style-type: none"> <li>• استعراضات برامج الفرص الاستراتيجية القطرية ومذكرات الاستراتيجيات القطرية</li> <li>• نظم الرصد والتقييم على مستوى المشروعات ونظام إدارة النتائج والأثر</li> <li>• محاضر الفرق الإنمائية في المشروعات واجتماعات ضمان الجودة</li> <li>• استعراضات الحوافز الإقليمية وحافطة المنح</li> </ul> | <p>(1) النسبة المئوية من البرامج القطرية التي تعمل على إيصال النتائج للشباب (حسب مؤشرات نظام إدارة النتائج والأثر)</p> <p>(2) عدد المشروعات الاستثمارية التي تستخدم منتجات أو ابتكارات تركز على الشباب أو ينتجها الشباب والمنبثقة أصلا من خلال المشروعات الممولة بالمنح</p>   | <p>تركيز برامج الفرص الاستراتيجية القطرية والمذكرات الاستراتيجية القطرية والعمليات الممولة بالقروض والمنح على الشباب الريفي</p>  |
|   | <b>المؤشرات</b>   | <b>النواتج</b>   |
|   | <p>(1) نسبة برامج الفرص الاستراتيجية القطرية ومذكرات الاستراتيجيات القطرية التي تتضمن الشباب كمجموعة مستهدفة تتمتع بالأولوية</p> <p>(2) نسبة المشروعات الجديدة الممولة بالقروض الحساسة لقضايا الشباب</p> <p>(3) عدد نظم الرصد والتقييم التي تتسم ببيانات مقسمة حسب الجنس والعمر (بما يتماشى مع نظام إدارة النتائج والأثر)</p> <p>(4) عدد الإشارات الواضحة للشباب في سياسة الاستهداف</p> | <p>(1) إدراج 100 بالمائة من برامج الفرص الاستراتيجية القطرية ومذكرات الاستراتيجية القطرية للشباب الريفي كمجموعة مستهدفة تتمتع بالأولوية</p> <p>(2) كون 50 بالمائة من تقارير تصميم المشروعات حساسة لقضايا الشباب</p> <p>(3) امتلاك نظم الرصد والتقييم لمؤشرات مقسمة حسب العمر</p> <p>(4) تعبئة الموارد لريادة النهج والتكنولوجيات الابتكارية المخصصة للشباب</p> <p>(5) تعديل سياسة الاستهداف في الصندوق</p> |
| <p>مجال الإجراء الثاني: تعزيز القدرة على التنفيذ</p> <p>تعزيز القدرات الإدارية والتقنية لأصحاب الحيازات الصغيرة ذات الصلة بالمشروعات الاستثمارية التي تركز على الشباب</p>   |   |  |
| <b>وسائل التثبيت</b>  | <b>المؤشرات</b>   | <b>النواتج</b>   |

|  |   |   |
|--|---|---|
|  | <p>(1) عدد موظفي الصندوق والمشروعات وشركاء التنفيذ الذين يطبقون المعرفة المتعلقة بكيفية إشراك الشباب بصورة ناجحة</p> <p>(2) عدد المنظمات التي يديرها الشباب التي تشرك بعضها بنشاط في تقاسم المعرفة</p>  | زيادة قدرات الصندوق وموظفي المشروعات وشركاء التنفيذ على إشراك الشباب بصورة ناجحة  |
|  | <b>المؤشرات</b>   | <b>النواتج</b>  |
| <ul style="list-style-type: none"> <li>• تقارير نظم إدارة التعلم</li> <li>• تقارير نظام تقييم الأداء</li> <li>• مسوحات الموظفين</li> </ul>                             | <p>(1) عدد النماذج التي تطورها أكاديمية العمليات في الصندوق بشأن الشباب الريفي</p> <p>(2) عدد الموظفين الذين أتموا بنجاح التدريب الذي تجربته أكاديمية العمليات</p> <p>(3) عدد موفري الخدمات والمستشارين المعيّنين (حسب كل إقليم) والمتوفرين على القائمة</p> <p>(4) عدد أحداث التدريب التي أجريت</p> <p>(5) النسبة المئوية للشباب ضمن كل مجموعة مستهدفة في مشروعات الصندوق الذين شاركوا في التدريب على تنمية المهارات</p> <p>(6) منح خمس مكافآت سنوية ضمن دورة خطة العمل لمدة ثلاث سنوات</p> | <p>(1) خطة واحدة لبناء القدرات</p> <p>(2) ستة نماذج تدريبية متوفرة لموظفي الصندوق والمشروعات وشركاء التنفيذ</p> <p>(3) إيصال ثلاثة نماذج للتدريب في أكاديمية العمليات تحت الركن الثاني بصورة مشتركة مع مواضيع التمايز بين الجنسين والتغذية وتغير المناخ</p> <p>(4) وجود قائمة بأسماء المستشارين المرخصين وموفري الخدمات بشأن الشباب الريفي</p> <p>(5) مشاركة ما لا يقل عن 50 بالمائة من جميع الشباب ضمن المجموعة المستهدفة لمشروعات الصندوق في التدريب على تنمية المهارات</p> <p>(6) إقامة ثلاثة أحداث للتعلم لمنظمات الشباب</p> <p>(7) إيجاد مكافآت سنوية وأحداث لأفضل المشروعات أداء (واحد لكل إقليم)</p> <p>(8) مذكرة توجيه لانخراط الشباب</p> |
| <p>مجال الإجراءات الثالث: إدارة المعرفة المستندة إلى الأدلة والاتصالات الاستراتيجية</p> <p>بناء وإدارة قاعدة للأدلة لدعم تصميم أفضل للمشروعات وانخراط سياساتي فعال</p> |   |   |
|  | <b>المؤشر</b>   | <b>المخرج</b>   |
| <ul style="list-style-type: none"> <li>• موقع الصندوق على شبكة الانترنت</li> <li>• سلسلة بحوث الصندوق</li> <li>• بوابة الحلول الريفية</li> </ul>                       | <p>(1) فائدة وتطبيق وسهولة الوصول إلى منتجات معرفية واتصالات تركز على الشباب يفوض بها الصندوق</p>   | تحسين واستخدام المعرفة المستندة إلى الأدلة والاتصالات الاستراتيجية حول النماذج الإنمائية الناجحة التي تركز على الشباب   |
|  | <b>المؤشرات</b>   | <b>المخرجات</b>   |

|   |  |  |
|---|--|--|
| <ul style="list-style-type: none"> <li>• حلقات عمل التنفيذ الإقليمي</li> <li>• مدونات داخلية وخارجية</li> </ul>   | <p>(1) عدد الدراسات وقواعد للبيانات التي تركز على الشباب الريفي</p> <p>(2) عدد المؤتمرات التي يعرض فيها بعد الشباب الريفي</p> <p>(3) عدد ونمط المنتجات متعددة وسائط الإعلام لإدارة المعرفة التي تركز على الشباب لتصميم المشروعات وتنفيذها والانخراط السياساتي</p> <p>(4) عدد تنزيلات الصفحات الخاصة بالشباب الريفي من موقع الصندوق</p> <p>(5) عدد الأحداث المؤسسية التي تتضمن الشباب الريفي كموضوع</p>                                 | <p>(1) وضع الصندوق لخطة لتوليد المعرفة المخصصة بالشباب ونشرها.</p> <p>(2) إيجاد خمسة دراسات حالة مخصصة للصندوق تركز على الشباب الريفي كمساهمة في تقرير التنمية الريفية لعام 2019</p> <p>(3) إيجاد ستة منتجات معرفية متعددة وسائط الإعلام تركز على الشباب</p> <p>(4) تحديث استراتيجية الاتصالات التي لتتضمن تركيزا على مجالات التعميم، بما في ذلك الشباب الريفي</p> <p>(5) عدد الأحداث الخاصة بتقاسم المعرفة حول استعراضات الحوافز الإقليمية والتعاون بين بلدان الجنوب والتعاون الثلاثي</p> |
| <p>مجال الإجراءات الرابع: الانخراط السياساتي وإرساء الشراكات وتعبئة الموارد</p> <p>إدارة الشراكات الاستراتيجية مع الحكومات، والمنظمات الدولية والقطاع الخاص والمنظمات غير الحكومية وغيرها من أصحاب المصلحة على المستوى الوطني، والإقليمي والعالمي، سعيًا وراء أنشطة استقطاب التأييد والأنشطة السياساتية</p> |  |  |
| وسائل التثبت  | المؤشرات   | المخرج   |
| <ul style="list-style-type: none"> <li>• تقييمات المشروعات والبرامج القطرية</li> <li>• الأخذ بالانخراطات السياساتية</li> <li>• تقرير مرحلي عن الشراكات</li> <li>• تقارير الانخراط مع المجلس الاستشاري للشباب الريفي</li> </ul>  | <p>(1) عدد المواجيز السياساتية المعدّة والتي يستخدمها مدراء البرامج القطرية لأغراض الانخراط السياساتي على المستوى القطري والمستوى العالمي لقيادة جدول أعمال الشباب الريفي</p> <p>(2) إدراج مدخلات المجلس الاستشاري للشباب الريفي في عملية صنع القرارات في الصندوق في المقر، وعلى المستوى القطري/مستوى المراكز الإقليمية، وعلى مستوى المشروعات بالعمل مع الشباب الريفي</p> <p>(3) المبلغ الذي عبأه الصندوق من الموارد لقضايا الشباب</p> | <p>انخراط سياساتي ناجح وتعبئة للموارد مع شركاء استراتيجيين على المستويات القطرية والإقليمية والعالمية</p>  |
|   | المؤشرات   | المخرجات   |

|   |   |
|---|---|
| <p>(1) الانخراطات السياسية على المستوى القطري</p> <p>(2) أنشطة الشراكات الإقليمية العالمية حول العمالة اللائقة وعماله الأطفال</p> <p>(3) عضوية نشطة من خلال الاجتماعات شبكات النهوض بالشباب المشتركة بين وكالات الأمم المتحدة والمساهمة في تنفيذ استراتيجية الأمم المتحدة للشباب</p> <p>(4) المشاركة في اجتماعات المجلس الاقتصادي والاجتماعي للأمم المتحدة بشأن الشباب</p> <p>(5) إنشاء مجلس استشاري للشباب الريفي</p> <p>(6) إقامة الحملات لدعم تمكين الشباب الريفي</p> <p>(7) تسمية سفيراً للنوايا الحسنة في الصندوق لأغراض الشباب الريفي</p> <p>(8) إرساء شراكات جديدة</p> <p>(9) تعبئة الموارد لريادة نهج التكنولوجيا الابتكارية المخصصة للشباب</p> | <p>(1) عدد المواجيز السياسية المعدّة</p> <p>(2) عدد الأنشطة الخاصة بالعمالة اللائقة وعماله الشباب</p> <p>(3) عدد المرات ونمط مشاركة الصندوق في مبادرات شبكات النهوض بالشباب المشتركة بين وكالات الأمم المتحدة (مثلا المؤتمرات والمدونات وحلقات العمل على شبكة الانترنت)</p> <p>(4) عدد وأنماط مشاركة الصندوق في المجلس الاقتصادي والاجتماعي للأمم المتحدة</p> <p>(5) عدد اجتماعات المجلس الاستشاري للشباب الريفي التي حضرها الصندوق</p> <p>(6) عدد الشراكات الجديدة أو المعززة</p> <p>(7) عدد نهج التكنولوجيا الابتكارية المخصصة للشباب الممولة من خلال المساهمات التكميلية غير المقيدة أو التمويل التكميلي</p> <p>(8) عدد أصحاب الحيازات الصغيرة من الشباب أو المنظمات التي تتمتع بوصول إلى الصندوق الرأسمالي للأعمال الزراعية</p> |
|---|---|

## المعالم البارزة الرئيسية للتنفيذ

2018

## الأنشطة التمهيدية

- 1- تحليل مكثفي لإعداد خط أساس عن الحساسية لفضايا الشباب في المشروعات الجارية واختيار مشروعات المحركين الأولي.
- 2- جرد بالمنظمات الشبابية وتكدير لخدمة الأدوات المواضيعية في الصندوق والتي يمكن تحديثها أو تعديلها لدعم تصميم وتنفيذ المبادرات التي تركز على الشباب.
- 3- مواصلة حزمة الأدوات المواضيعية في الصندوق لتوسيعها والبناء على الممارسات الجيدة الموجودة حول إشراك الشباب الريفي سواء ضمن الصندوق أو خارجه.
- 4- ومع الفرق القطرية وفرق المراكز الإقليمية، تحديث احتياجات التدريب لموظفي الصندوق لتحصين التركيز على النهج والتقنيات الحساسة لفضايا الشباب
- 5- تعبئة مجمع من موفري الخدمات والمستشارين ذوي الخبرة

2019

## السنة الأولى

- 1- تطوير خطة للتدريب لموظفي الصندوق وشركاء التنفيذ في الفصل الأول من العام
- 2- إعداد 3 نماذج تدريبية وتنفيذ تدريبين للمدربين ودورة تدريبية في أكاديمية العمليات (تستمر خلال السنة الثانية)
- 3- تدريب 30 موظفًا من الصندوق
- 4- جعل 30 بالمائة من جميع برامج الفرص الاستراتيجية القطرية ومذكرات الاستراتيجيات القطرية حساسة لفضايا الشباب
- 5- جعل 16 بالمائة من المشروعات الجديدة في ذخيرة مشروعات للفترة 2019-2021 حساسة لفضايا الشباب
- 6- إنشاء المجلس الاستشاري للشباب الريفي

2020

## السنة الثانية

- 1- إقامة تدريبين للمدربين وخمسة دورات تدريبية لموظفي المشروعات ودورة تدريبية واحدة في أكاديمية العمليات.
- 2- جعل 30 بالمائة من جميع برامج الفرص الاستراتيجية القطرية حساسة لفضايا الشباب (إضافة إلى تلك الواردة في السنة الأولى)
- 3- ضمان أن يكون 18 بالمائة من المشروعات الجديدة في ذخيرة المشروعات للفترة 2019-2021 حساسة لفضايا الشباب (إضافة إلى تلك الواردة في السنة الأولى)
- 4- إرساء خمس شركات على المستوى الإقليمي وشركتين على المستوى الدولي.
- 5- إنشاء مجلس الاستشاري للشباب الريفي وتشغيله.
- 6- منح خمس جوائز سنوية لأفضل المشروعات أداءً (واحدة لكل إقليم من الأقاليم)

2021

## السنة الثالثة

- 1- التأكد من أن جميع البرامج الفرص الاستراتيجية القطرية المعدة خلال فترة التجديد الحادي عشر للموارد حساسة لفضايا الشباب
- 2- التأكد من كون 50 بالمائة من المشروعات الجديدة المصممة خلال فترة التجديد الحادي عشر للموارد (2019-2021) حساسة لفضايا الشباب
- 3- منح خمس جوائز سنوية لأفضل المشروعات أداءً (واحدة لكل إقليم من الأقاليم)



## Mainstreaming Youth at IFAD - Rural Youth Action Plan 2019-2021

## Table of Contents

|  |    |
|--|----|
| Abbreviations and acronyms .....   | 2  |
| I. Executive summary .....   | 5  |
| A. Why rural youth and the Rural Youth Action Plan (RYAP)?.....                        | 5  |
| B. Main thematic areas .....   | 5  |
| C. The approach.....   | 6  |
| D. Action areas .....  | 6  |
| - Action area 1: Youth-sensitive country programme delivery.....                       | 6  |
| - Action area 2: Strengthening implementation capacity.....                            | 6  |
| - Action area 3: Evidence-based knowledge management and strategic communication ..... | 6  |
| - Action area 4: Policy, partnerships and resource mobilisation.....                   | 6  |
| E. Implementing the RYAP.....  | 7  |
| II. Introduction.....  | 7  |
| A. IFAD's Eleventh Replenishment .....   | 7  |
| B. Preparation of the Rural Youth Action Plan.....                                     | 8  |
| C. IFAD's support to youth .....   | 8  |
| III. The context .....   | 9  |
| A. Defining youth .....  | 9  |
| B. Demographics.....   | 10 |
| C. Education .....   | 11 |
| D. Health and nutrition.....   | 11 |
| E. Employment .....  | 11 |
| F. Migration.....  | 11 |
| G. Civic engagement and participation .....  | 12 |
| IV. IFAD's Rural Youth Action Plan .....   | 12 |
| A. Theory of Change and Results Framework .....  | 12 |
| i) Theory of Change (ToC) .....  | 12 |
| ii) Results Management Framework (RMF) .....   | 14 |
| iii) Monitoring and evaluation .....   | 14 |
| iv) Learning.....  | 15 |
| B. Principles of engagement.....   | 16 |
| i) Integrating youth within governance .....   | 16 |
| ii) Young women .....  | 16 |
| C. Main thematic areas .....   | 17 |
| i) Youth employment .....  | 17 |
| ii) Youth entrepreneurship.....  | 18 |
| iii) Access to land and natural resources .....  | 18 |

|  |    |
|--|----|
| iv) Access to finance.....   | 19 |
| v) Access to technology .....  | 19 |
| D. Emerging themes .....   | 19 |
| i) Decent work .....   | 20 |
| ii) Adolescent.....  | 20 |
| iii) Indigenous youth .....  | 21 |
| iv) Youth with disabilities .....  | 21 |
| V. Action areas .....  | 22 |
| A. Action area 1: Youth-sensitive country programme delivery .....                           | 22 |
| B. Action area 2: Strengthening implementation capacity .....                                | 24 |
| C. Action area 3: Evidence-based knowledge management and strategic communications .....     | 25 |
| D. Action area 4: Policy engagement, partnerships and resource mobilisation ....             | 26 |
| VI. Implementation and delivery .....  | 29 |
| A. Implementation of the Rural Youth Action Plan.....  | 29 |
| B. Baselines.....  | 29 |
| C. Delivery .....  | 29 |
| Annexes .....  | 31 |
| Annex 1 - Results Framework and Timeline of Activities (by Action Areas) for 2019-2021 ..... | 31 |
| Annex 2 - List of partners and their potential areas of collaboration.....                   | 34 |
| Annex 3 - Glossary of terms .....  | 37 |

## Abbreviations and Acronyms

|        |  |
|--------|--|
| ABC    | Agribusiness Capital Fund  |
| ADB    | Asian Development Bank   |
| AFS    | Agency for Food Security   |
| APR    | Asia and the Pacific Region  |
| ARPU   | Average Revenue per User   |
| ASAP   | Adaptation for Smallholder Agriculture Programme                           |
| ASC    | Association Sportive et Culturelle   |
| CEDAW  | Convention on the Elimination of All Forms of Discrimination against Women |
| CLEP   | country-level policy engagement  |
| COM    | Communications Division  |
| CONPES | Consejo Nacional de Políticas Económicas y Sociales de Colombia            |
| COSOP  | country strategic opportunities programme                                  |
| CPM    | Country Programme Manager  |

|        |   |
|--------|---|
| CPO    | Country Programme Officer   |
| CRP    | Community Resource Person   |
| CSN    | country strategy note   |
| DVGT   | Voluntary Guidelines for Responsible Governance of Land Tenure, Forests and Fisheries (VGGTs) |
| EAP    | East Asia and Pacific   |
| ECG    | Environment, Climate, Gender and Social Inclusion Division                                    |
| ECOSOC | United Nations Economic and Social Council  |
| ESA    | East and Southern Africa  |
| FAO    | Food and Agriculture Organization of the United Nations                                       |
| FSP    | financial service providers   |
| GALS   | Gender Action Learning System   |
| GEF    | Global Environment Facility   |
| GCF    | Green Climate Fund  |
| GOV    | governmental  |
| GSMA   | global mobile industry association  |
| GYIC   | Global Youth Indigenous Caucus  |
| HQ     | headquarters  |
| IFAD   | International Fund for Agricultural Development   |
| ICA    | Integrated Country Approach   |
| ICT    | information and communication technologies  |
| IFI    | International Financial Institution   |
| IITA   | International Institute of Tropical Agriculture   |
| ILO    | International Labour Organization   |
| ITU    | International Telecommunication Union   |
| IPCCLA | International Partnership for Cooperation on Child Labour in Agriculture                      |
| IUCN   | International Union for Conservation of Nature  |
| KM     | knowledge management  |
| LAC    | Latin America and Caribbean   |
| LDC    | least developed countries   |
| LMIC   | low- and middle-income countries  |
| MDB    | Multilateral Development Bank   |
| MDP    | Global Association of Masters in Development Practice   |
| M&E    | monitoring and evaluation   |
| MNR    | management of natural resources   |
| MTR    | mid-term review   |
| NDC    | nationally determined contributions   |
| NEET   | neither in education, employment or training  |

|          |  |
|----------|--|
| NEN      | Near East, North Africa, Europe and Central Asia                     |
| NGO      | non-governmental organization  |
| OECD     | Organisation for Economic Co-operation and Development               |
| ORMS     | Operational Results Management System                                |
| OSH      | occupational safety and health                                       |
| PAFA     | Projet d'Appui aux Filières Agricoles                                |
| PMU      | project management unit  |
| PCU      | project coordination unit  |
| PRM      | Partnership and Resource Mobilisation                                |
| RDR      | Rural Development Report   |
| RIA      | Research and Impact Assessment Division                              |
| RIDE     | Report on IFAD's Development Effectiveness                           |
| RIMS     | Results and Impact Management System                                 |
| RYAP     | Rural Youth Action Plan  |
| SA       | South Africa   |
| STC      | Save the Children  |
| SDSN     | Youth Sustainable Development Solutions Network                      |
| SDG      | Sustainable Development Goals  |
| SF/SFYN  | Slow Food/Slow Food Youth Network                                    |
| SIF      | Smallholder and Small and Medium-Sized Enterprise Investment Finance |
| SSA      | sub-Saharan Africa   |
| SSTC     | South-South and Triangular Cooperation                               |
| SWAP     | System-Wide Action Plan  |
| UCC      | urban climate change   |
| UCC      | unrestricted complementary contributions                             |
| UN       | United Nations   |
| UNDESA   | United Nations Department of Economic and Social Affairs             |
| UN-IANYD | UN Inter-Agency Network on Youth Development                         |
| UNICEF   | United Nations International Children's Emergency Fund               |
| UNFPA    | United Nations Population Fund                                       |
| UNESCO   | United Nations Educational, Scientific and Cultural Organization     |
| WCA      | West and Central Africa region                                       |
| WEAI     | Women's Empowerment in Agriculture Index                             |
| WHO      | World Health Organization  |
| YAC      | Youth Advisory Council   |
| YPARD    | Young Professionals for Agricultural Development                     |

## I. Executive summary

### A. Why rural youth and the Rural Youth Action Plan (RYAP)?

1. The bulk of the world's 1.2 billion young people, equivalent to 88 per cent, live in the rural areas of developing countries, and seventy-five million are unemployed. Agricultural development presents an opportunity to meet young peoples' aspirations for stable jobs and access to social services, which are normally absent in rural areas and constitute common "push" factors promoting an increasing trend to migration. These young people aspire to secure, stable jobs and access to the social services and recreation facilities that are normally absent in rural areas.
2. The Plan gives IFAD a unique opportunity to play a central role in transforming rural areas in developing countries, and to contribute to achievement of the Sustainable Development Goals (SDGs). This is a key priority under the Eleventh Replenishment of IFAD Resources (IFAD11) and part of the Strategic Framework, 2016 - 2025. IFAD's unique experience lies precisely in its strong targeting of the extremely poor and in delivering well-tested solutions and country-specific interventions. IFAD will contribute to creating choices and opportunities for economic empowerment and more generally creating an enabling environment where young people can thrive. IFAD's flexibility allows for testing innovative ideas and approaches to rural development, which can then be leveraged into longer-term country engagement through IFAD-financed and government-owned programmes as entry points.
3. In addition to internal consultations, the preparation process for the Plan included three different surveys; additionally, it benefited from inputs from youth organizations, a validation workshop, an informal Executive Board discussion and a review by the Executive Board on 11 September 2018. IFAD appreciates the excellent support received from its membership, the Executive Board members and key partners over the past several months in the process of developing this Action Plan.
4. The main purpose of the Plan is to ensure effective mainstreaming of youth within IFAD operations. The objective is to enhance the impact of IFAD investment on the SDGs by socially and economically empowering rural young women and men.

### B. Main thematic areas

5. The Plan leverages IFAD's strong comparative advantage on the themes of: (i) youth employment and entrepreneurship; (ii) access to land and natural resources; (iii) access to rural finance; (iv) access to climate-resilient productive technologies and practices; and (v) profitable smallholder organizational models. IFAD will work with partners to explore options for dealing with emerging themes so as to augment the actions on the above key topics through which youth engagement will be pursued. These emerging themes include: (i) decent employment; (ii) child labour in agriculture; and (iii) issues affecting adolescent girls, indigenous youth and youth with disabilities. While IFAD considers these emerging themes to be extremely important, they are somewhat beyond IFAD's specific experience, and hence the Fund will strengthen its strategic and operational partnerships with agencies that are already spearheading these themes.

### C. The approach

6. It is envisaged that joint planning and delivery between multiple IFAD departments and divisions will ensure youth engagement across all of the Fund's initiatives. In doing so, the delivery process will adopt a dynamic and differentiated approach, involving beneficiary countries and partners at the national and international level to be able to respond to the diverse needs of rural youth.

### D. Action areas

7. The Plan has identified four key action areas:

- Action area 1: Youth-sensitive country programme delivery

8. The youth-sensitive programming will not only focus on primary production activities, but will also consider upstream and downstream business opportunities along the value chain, as well as exploiting opportunities in the off-farm sector. South-South and Triangular Cooperation (SSTC) will also be promoted as a modality for sharing experiences among young people in agribusiness and the overall exchange of best practices on youth-sensitive initiatives.

- Action area 2: Strengthening implementation capacity

9. Capacity development will be undertaken at two interrelated levels: (i) at IFAD level, in the capacities of all actors who are working with and for rural youth (project staff and other service providers, and implementing partners), within IFAD or in partnership with it; and (ii) at project/grass-roots level, young people's capacity will be developed through specific skills enhancement activities built into IFAD operations, as well as through direct engagement with IFAD at corporate level in the Rural Youth Advisory Council (RYAC).

- Action area 3: Evidence-based knowledge management and strategic communication

10. In order to better contribute to policy engagement and the constant improvement of projects, while increasing IFAD's visibility in pursuing promotion of the youth agenda, RYAP will build the evidence base through: (i) effective monitoring and evaluation activities; (ii) documentation of good practices; and (iii) strategic knowledge-sharing. IFAD will leverage its renewed priority for SSTC to serve as a broker of knowledge-based relationships and potential investments between multiple stakeholders. Dissemination will be through a variety of digital platforms and more traditional tools and channels and will be targeted to different IFAD audiences, including through social media and IFAD's corporate website.

- Action area 4: Policy, partnerships and resource mobilisation

11. Building on action area 3, IFAD will: (i) engage on the basis of the evidence of what works and what does not work for rural youth; (ii) contribute to policy engagement, not only directly but also through stakeholders and partners, facilitating in-country dialogue and providing evidence and support to influence national policies related to the rural youth agenda; (iii) mobilise resources to support the implementation of the Action Plan; and (iv) foster and strengthen partnerships, particularly between organizations that have comparative advantages on different issues affecting young people at country level. IFAD will also support the direct engagement of youth-led organizations in the policy process at all levels and the development of partnerships among rural youth associations and

networks through the establishment of the Rural Youth Advisory Council and the engaging of a goodwill ambassador.

12. The Partnership and Resource Mobilisation Division (PRM), in conjunction with the Strategic Knowledge Department (SKD), has already begun taking active measures to secure additional financing from Member State donors and others, through unrestricted complementary contributions (UCC) and supplementary funds. It is envisaged that these funds will be particularly targeted towards complementing project investments and funding key areas such as capacity development and incubator models. IFAD will support youth smallholders and their organizations to fulfil the requirements to be able to access the Agribusiness Capital Fund (ABC) in the countries where it will be operational.

#### E. Implementing the RYAP

13. The Environment, Climate, Gender and Social Inclusion Division (ECG) will incorporate the RYAP into its divisional management plan, with delivery cascading to sub-regional and country offices. The youth team, housed within ECG, will be led by a lead technical specialist and will be responsible for implementation of the RYAP, in close coordination with the Programme Management Department, sub-regional hubs and country offices.

## II. Introduction

14. Today's world youth population of 1.2 billion people (following the official UN definition of those in the age range from 15 to 24 years) represents the largest and most educated cohort ever. The large majority of these young people (88 per cent) live in developing countries and more than half live in rural areas<sup>3</sup>. Seventy-five million young people worldwide are unemployed, and although agriculture remains the largest employer for rural young people, it is not attractive to them. Limited remuneration, hard work and drudgery, and a lack of social recognition are the most common push factors, leading to increasing trends to migration. Young people are also looking for a sense of purpose in their lives. Their aspirations reflect the seeking of stable jobs and access to the social services and recreation facilities that are normally absent in rural areas.
15. IFAD's view is that these young people constitute an opportunity, if they are properly supported, recognized, and valued for their comparative advantages as early adopters of new technologies and as innovators and risk takers. In this way, they can act as agents of change and engines of economic and social progress.

#### A. IFAD's Eleventh Replenishment

16. The Rural Youth Action Plan, which puts a strong emphasis on youth employment, is one of the commitments taken on by IFAD in the context of its Eleventh Replenishment<sup>4</sup> and the Note from the Third Session of the Consultation on the Eleventh Replenishment<sup>5</sup>. Mainstreaming youth engagement is a far-reaching prospect that uniquely positions IFAD to play a central role in the global drive towards transforming rural areas in developing countries, and to significantly contribute to achievement of the SDGs. Mainstreaming youth engagement is also a good development practice, since investing in young people generates significant social and economic returns.

---

<sup>3</sup> Sub-Saharan Africa is the region where political attention and financial investment should be concentrated since this is where it is expected that the numbers of young people will double between now and 2030, and 330 million new jobs will be required.

<sup>4</sup> <https://webapps.ifad.org/members/gc/41/docs/GC-41-L-3-Rev-1.pdf>

<sup>5</sup> <https://webapps.ifad.org/members/repl/11/03/docs/IFAD11-3-R-4.pdf>

17. IFAD will therefore: (a) ensure that youth issues get mainstreamed in 100 per cent of COSOPs and CSNs and in 50 per cent of investment projects; (b) update its targeting guidelines to systematically take the youth dimension into account; (c) ensure that project M&E systems collect, analyse and track age- and sex-disaggregated data, within the overall Results and Impact Management System (RIMS) framework; (d) use South-South and Triangular Cooperation (SSTC) as a modality for building the capacity of rural youth for entrepreneurship and for the exchange of best practices in youth-sensitive initiatives; (e) provide blended financing for smallholder producer organizations; (f) focus its Rural Development Report 2019 on rural youth; and (g) take into consideration possible support for youth with disabilities.

18. The following table summarizes the actions to be taken during IFAD11:

Table 1: IFAD actions for mainstreaming youth

|  | Actions for IFAD11   |
|--|--|
| Youth and youth employment (under SDG 8) | - Rural Youth Action Plan by third quarter of 2018   |
|  | - mainstream in 100 per cent of COSOPs and CSNs and 50 per cent of projects                                      |
|  | - update targeting guidelines with differentiated approaches for young women and young men                       |
|  | - promote youth entrepreneurship and employment; develop financing mechanisms for youth and leverage remittances |
|  | - establish IFAD as an influential advocate for rural youth, establishing a rural youth advisory council         |
|  | - focus the Rural Development Report 2019 on youth and rural employment  |

## B. Preparation of the Rural Youth Action Plan

19. RYAP preparation has been an inclusive and participatory process, involving a combination of in-house, youth organizations and key partners. Two different surveys gathered views from Country Programme Managers, Country Programme Officers and Programme Officers from the five IFAD Regional Divisions. Another survey was done with Project Directors and Coordinators of IFAD loan-funded field operations in the regions. The Plan also builds on IFAD's experience as captured in various publications and youth-focused knowledge products, varying from the collection of lessons learned, good practices and How to Do Notes, to the evaluation synthesis on rural youth that was produced in 2013 by IOE.

20. An additional benchmarking survey was carried out with a set of development partners, and feedback was received from UN agencies (FAO, ILO), multilateral and bilateral cooperation agencies (OECD, Germany, the Netherlands and Denmark), NGOs (Oxfam and Save the Children Fund) and the Asian Development Bank. The preparation process also benefited from inputs from youth organizations, a validation workshop, an informal Executive Board discussion and a review by the Executive Board on 11 September 2018. IFAD appreciates the excellent support from its membership, the Executive Board members and key partners over the past several months in the process of developing this action plan.

## C. IFAD's support to youth

21. IFAD's engagement on rural youth had already begun several years ago, even in the absence of an action plan. A recent stocktaking review carried out by RIA over 82 projects approved by IFAD during the period from 2013 to 2015 reveals that US\$152 million, 5.8 per cent of the US\$2.6 billion in total IFAD funding during IFAD9, were allocated to rural youth. (Table 2 below presents the allocations by cross-cutting themes.)



Table 2: IFAD allocation by cross-cutting themes (2013-2015)

| Region | Gender | Youth | Indigenous peoples | Nutrition | CCA   | CCM  | NRM   | Emerging issues* |
|--------|--------|-------|--------------------|-----------|-------|------|-------|------------------|
| APR    | 5.3%   | 0.4%  | 3.6%               | 5.2%      | 4.0%  | 2.8% | 6.9%  | 1.2%             |
| ESA    | 1.0%   | 2.2%  | 0.3%               | 5.6%      | 22.3% | 0.4% | 19.3% | 0.0%             |
| LAC    | 8.0%   | 3.1%  | 6.9%               | 2.7%      | 6.2%  | 0.1% | 2.4%  | 0.0%             |
| NEN    | 6.9%   | 7.1%  | 0.0%               | 0.0%      | 22.6% | 3.6% | 17.3% | 0.0%             |

Defining rural youth: The definition of youth is a social and cultural construction that needs to be analysed and understood as part of a dynamic process strongly influenced by the specificity of rural contexts and territories where IFAD operates. For example, in some regions women are considered young until they marry; in others, men cease to be young when they can ensure their livelihoods and carry out their personal and/or family life plan – which in some places may extend past 30 or even 40 years of age. This analysis will be crucial to achieving sufficient rural youth inclusion as offered through IFAD operations.

|       |      |       |      |      |       |      |      |      |
|-------|------|-------|------|------|-------|------|------|------|
| WCA   | 9.5% | 16.5% | 0.0% | 4.4% | 10.4% | 0.7% | 2.3% | 0.0% |
| TOTAL | 6.0% | 5.8%  | 2.0% | 4.2% | 11.4% | 1.7% | 9.0% | 0.4% |

\* Emerging issues include migrants and displaced persons with disabilities. Source: IFAD (2018)

22. Sixty per cent of the funding was allocated to supporting three subcategories of youth-focused activities: business development; access to markets; and access to finance. Only 5 per cent was allocated to vocational training and land management activities (see table 3 below).

Table 3: Top six subcategories for youth

| Subcategories  | % of funding |
|--|--------------|
| 1. Business development and income-generating activities | 31.1%        |
| 2. Markets and linkages                                  | 15.6%        |
| 3. Financial intermediaries                              | 13.9%        |
| 4. Community development                                 | 8.7%         |
| 5. Vocational training                                   | 5.5%         |
| 6. Sustainable land management                           | 4.3%         |

### III. The context

#### A. Defining youth

23. Some of the challenges faced when working on youth are related to the lack of a common definition. The official UN definition of youth, which corresponds to the age range from 15 to 24, is not commonly followed. African governments' national youth policies normally adopt the definition provided by the African Union, which is 18 to 35. All of IFAD's COSOPs and project designs should define youth on the basis of the government's own definition. There is also an issue of overlapping

between different age groups (childhood, adolescence and adulthood). Unless specified, the following sections refer to the official UN definition of 15 to 24.

24. No matter how youth is defined, the other key aspect that should never be neglected is that youth cannot be considered a homogenous social group. As a matter of fact, its heterogeneity (in terms of gender, age, ethnicity, cultural specificities, educational level, employment status, skills and capacities) – coupled with its transitory nature in time – entails different priorities and opportunities requiring that development projects cater for different livelihood options.

## B. Demographics

25. The demographics vary according to regions, with Africa being the most outstanding case with a projected increase in youth share of the population from 22 to 29 per cent by 2030. This demographic phenomenon – called “the youth bulge” – is more common in developing countries where, contrary to the global trend, the rural population continues to increase. On the other hand, East Asia and Latin America are expected to decrease their youth population.
26. Within sub-regions there are important differences among countries: in Africa, the highest proportion of rural youth lives in the Sahel, the Horn of Africa and Southern Africa. In Latin America and the Caribbean, countries like Haiti, Honduras, Guatemala, Guyana and Paraguay have a proportion of rural youth that resembles that in sub-Saharan African countries. Other countries that have relatively high percentages of rural youth are Burkina Faso, Papua New Guinea and Tajikistan.
27. Table 4 below shows a comparison between estimates for 2015 and 2030, specifically for the rural youth population in the five sub-regions where IFAD’s operations take place. In all regions, young women make up nearly half of rural youth; they are impacted in specific ways, different from those impacting rural young men, when it comes to education, health and employment.

Table 4: Rural youth population (15-24 years of age), by sub-region<sup>6</sup>

| Rural youth by sub-region       | 2015                         |   |   |  | 2030                         |   |   |  |
|---------------------------------|------------------------------|---|---|--|------------------------------|---|---|--|
|                                 | Total rural youth population | As a % of the region's youth population | As a % of the region's rural population | As a % of the total population of the region | Total rural youth population | As a % of the region's youth population | As a % of the region's rural population | As a % of the total population of the region |
| East Asia and the Pacific       | 138,520,618                  | 42.93%                                  | 14.13%                                  | 6.1%   | 100,346,188                  | 32.99%                                  | 12.57%                                  | 4.1%   |
| Latin America and the Caribbean | 22,246,322                   | 20.19%                                  | 17.47%                                  | 3.5%   | 17,690,429                   | 16.85%                                  | 14.65%                                  | 2.5%   |
| Middle East and North Africa    | 26,484,726                   | 35.82%                                  | 17.24%                                  | 6.2%   | 28,534,153                   | 31.60%                                  | 16.83%                                  | 5.3%   |
| Sub-Saharan Africa              | 123,363,100                  | 62.24%                                  | 19.71%                                  | 12.3%  | 161,458,642                  | 54.68%                                  | 20.08%                                  | 11.0%  |
| South Asia                      | 218,911,215                  | 66.96%                                  | 18.74%                                  | 12.6%  | 201,975,167                  | 59.70%                                  | 16.53%                                  | 9.9%   |
| World                           | 547,962,167                  | 46.02%                                  | 16.19%                                  | 7.4%   | 518,399,198                  | 40.15%                                  | 15.17%                                  | 6.1%   |

<sup>6</sup> Unless indicated, data for this section comes from DataBank (World Bank). <http://databank.worldbank.org/>

## C. Education

28. A 2017 Policy Paper<sup>7</sup> by the United Nations Educational, Scientific and Cultural Organization (UNESCO) estimates that the total number of out-of-school children, adolescents and youth comes to 264 million, with sub-Saharan Africa (SSA) in the lead. SSA is also the region with the highest rate of out-of-school adolescents. Not surprisingly, this trend is more pronounced in low-income countries.

## D. Health and nutrition

29. The World Health Organization (WHO)<sup>8</sup> estimates that around 1.2 billion people are aged 10 to 19, with the 15- to 19-year-old segment being subject to health risk factors such as alcohol and tobacco use, unsafe sex and drug use. Thanks to improved childhood vaccination, adolescent deaths and disability from measles have fallen markedly. However, diarrhoea and lower respiratory tract infections, together with meningitis, are still the top three causes of adolescent death in low- and middle-income African countries.

In sub-Saharan Africa (SSA) the great majority of rural migrants are young people. In SSA most migrants originate from rural areas. Sixty per cent of them are aged 15 to 34 years. Between 60 per cent and 80 per cent are male and make up part of large families (over seven members) with difficulties in accessing and inheriting agricultural land. On average, young rural migrants come from households that have better-educated members and slightly larger farms and per capita earnings than non-migrant rural youth.

Source: Africa in motion. Dynamics and drivers of migration south of the Sahara. Rome, FAO and CIRAD (2017).

## E. Employment

30. The global youth unemployment rate reached 13.1 per cent in 2017, corresponding to 70.9 million young unemployed people. The Arab states (closely followed by North Africa) continue to be the region with the highest youth unemployment rate, at 30.0 per cent in 2017. In Latin America and the Caribbean the rate will continue to increase, remaining stable in sub-Saharan Africa and in East and South Asia.
31. The ILO estimates that 76.7 per cent of working youth have informal jobs, compared to 57.9 per cent of working adults, living on an income below the extreme poverty threshold of US\$1.90 a day. Youth unemployment is higher for women in developing regions, with the highest rate being in the Middle East. This further underlines that an estimated 21.8 per cent of young people are neither in employment nor in education or training (NEET), most of them being female (34.4 per cent globally). Male NEET rates are lowest in developing countries at 8.0 per cent, followed by emerging countries at 9.6 per cent, and developed countries at 11.3 per cent.
32. Employment in agriculture is declining in the developing regions of Africa, Asia and the Pacific, and Latin America and the Caribbean, for both young and older workers, although a sizable number of young workers remain in agriculture.

## F. Migration

33. The 2017 ILO Global Employment Report<sup>9</sup> indicates that 70 per cent of migrants are under 30 years of age and more than half have relocated to developed countries, often in search of better life prospects and higher standards of living (UNDESA, 2015). Using data from the Gallup World Poll, the share of youth expressing a desire to migrate was more than 36 per cent in 2016, a 3 per cent increase since 2009. The largest increase was in the Arab states, at 9 percentage

<sup>7</sup> <http://unesdoc.unesco.org/images/0025/002503/250392E.pdf>

<sup>8</sup> <http://www.who.int/en/news-room/fact-sheets/detail/adolescents-health-risks-and-solutions>

<sup>9</sup> Global Employment Trends for Youth 2017 Report. [http://www.ilo.org/wcmsp5/groups/public/---dgreports/---dcomm/---publ/documents/publication/wcms\\_598669.pdf](http://www.ilo.org/wcmsp5/groups/public/---dgreports/---dcomm/---publ/documents/publication/wcms_598669.pdf)

points, followed by North Africa at 7 percentage points. Willingness to move abroad was highest in sub-Saharan Africa at 44.3 per cent, followed closely by North Africa, Latin America and the Caribbean, and Eastern Europe in that order.

## G. Civic engagement and participation

34. A 2016 report<sup>10</sup> by the UNDESA on youth civic engagement indicates relatively poor voter turnout among youth as a global phenomenon. Survey results from a sample of 33 countries determined that only 44 per cent of young adults aged 18 to 29 years of age “always vote”, compared to almost 60 per cent of all citizens. A note by the United Nations on “Youth, Political Participation and Decision-Making” establishes that 1.65 per cent of parliamentarians around the world are in their twenties and 11.87 per cent are in their thirties.
35. The Commonwealth report further adds that the expanding use of information and communication technologies (ICTs) is increasing youth participation in civic affairs. However the relationship between access to ICTs and youth participation is not straightforward, and challenges persist.

### Rural Dialogue Group in Colombia

Between 2012 and 2014, IFAD supported the formation of the Colombia Rural Youth Network. With the Network, and through a participatory multi-stakeholder platform, IFAD supported the preparation of Guidelines for the generation of opportunities for the Youth\* which were adopted by the Colombian National Council for Economic and Social Policies (CONPES). Today, IFAD supports the Rural Dialogue Group in Colombia and the Colombia Rural Youth Network, which have over 3,000 members and work through 12 subnational nodes. They enjoy the same rights as other stakeholders, such as the Coffee Producers Federation and the Ministry of Agricultural and Rural Development.

\*“Lineamientos para la generación de oportunidades para los jóvenes” (2014), Consejo Nacional Política Económica y Social (CONPES), República de Colombia, Departamento Nacional de Planeación: <http://www.colombiajoven.gov.co/atencionaljoven/Documents/CONPES%20173.pdf>

## IV. IFAD’s Rural Youth Action Plan

### A. Theory of Change and Results Framework

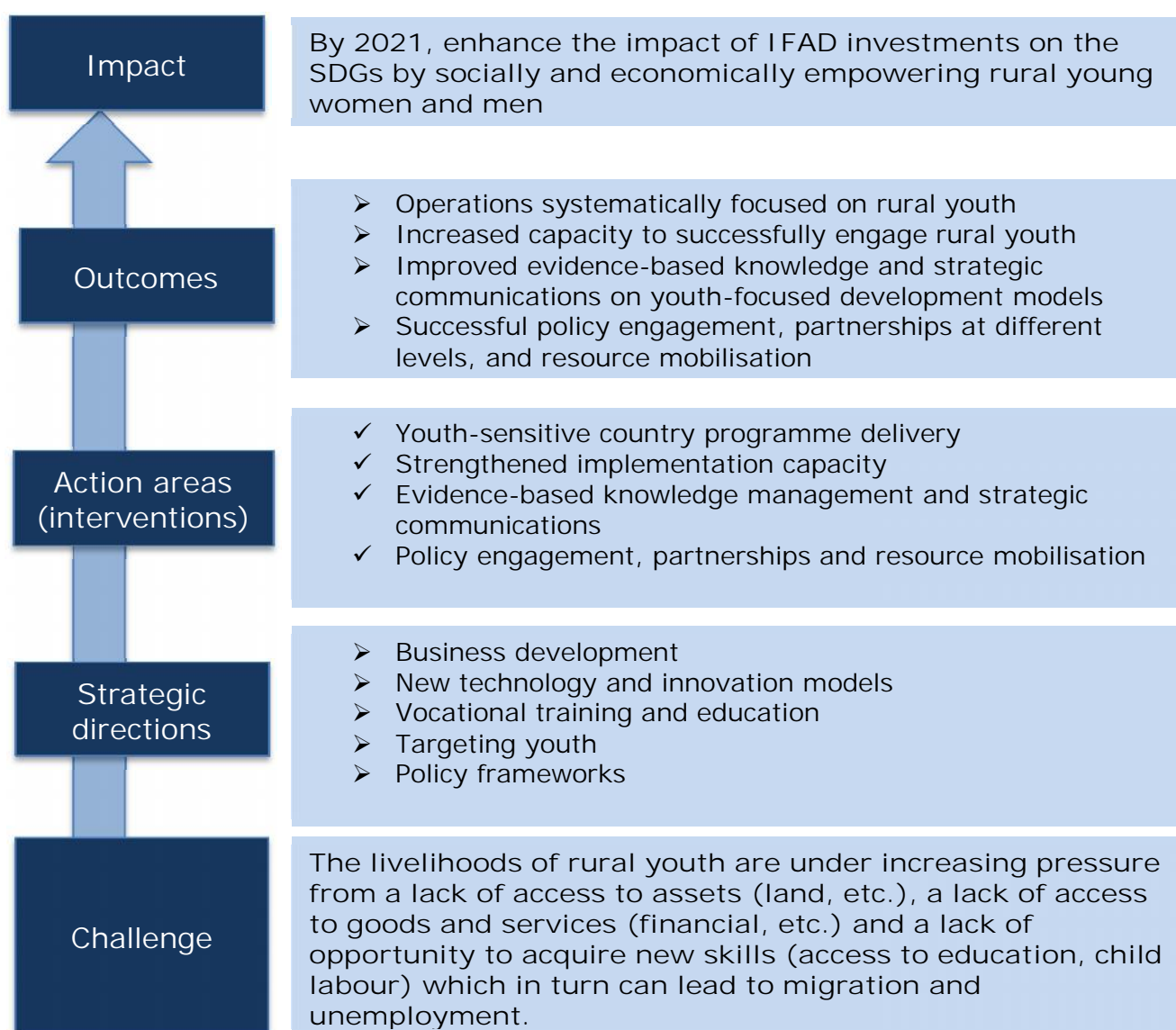
#### i) Theory of Change (ToC)

36. IFAD recognizes that a failure to engage youth – particularly in agriculture – will stifle the productivity increases needed to achieve the SDGs.<sup>1</sup> The RYAP theory of change is founded on IFAD’s commitment to make effective and efficient contributions to Sustainable Development Goals 1, 2, and 8, and to the broader 2030 Agenda (see figure 1). The challenges illustrated in figure 1 are common to all poor rural people; however, youth is a segment that suffers more. The effects of the challenges on young people often manifest themselves in unemployment, landlessness, financial exclusion, outmigration, and child labour in agriculture, among other issues. Hence IFAD commits to taking steps to improve the lives of rural youth (solutions) through the four action areas of the RYAP, by adopting a holistic approach to youth-sensitive programming and a differentiated context-specific strategy.
37. IFAD’s pro-youth interventions should foster youth economic empowerment by offering a comprehensive menu of interventions, comprising: (i) vocational and technical training; (ii) business development services; (iii) credit/equity financing for youth-owned enterprises and start-ups; (iv) investments in mechanization and the use of modern technologies, including information and communications technology (ICT); (v) productive use of migrants’ remittances to spur investment

<sup>10</sup> [http://www.unworldyouthreport.org/images/docs/un\\_world\\_youth\\_report\\_youth\\_civic\\_engagement.pdf](http://www.unworldyouthreport.org/images/docs/un_world_youth_report_youth_civic_engagement.pdf)

in rural development; (vi) agriculture risk management; and (vii) activities aimed at involving youth as key stakeholders in the governance structures of farmers' organizations, youth associations and cooperatives.

Figure 1: Rural Youth Action Plan – Theory of Change



## ii) Results Management Framework (RMF)

38. To strengthen the linkage to the IFAD 11 RMF<sup>11</sup>, the RYAP results management framework is structured into three levels (see figure 2): (i) the first is at the action areas level, through which youth will be mainstreamed across IFAD's operations and which is associated with IFAD's own results at output and outcomes levels; (ii) the second level (goal) is in line with the IFAD Strategic Objectives as set forth in the Strategic Framework 2016-2025; and (iii) the RMF culminates with reference to the SDGs, to which IFAD's RYAP will indirectly contribute. All RYAP outcomes are contributing to the achievement of IFAD 11 results as detailed below.
39. Outcome of action area 1: "COSOPs, CSNs, loans and grants – investments will be systematically focused on rural youth", to contribute to all people-centred output indicators listed in tier II (IFAD's development results) of IFAD11. In addition, this action area will also contribute to performance of indicator 3.2.5 (Appropriateness of targeting approaches in IFAD investment projects).
40. Outcomes 2, 3 and 4 contribute mostly to the achievement of indicators that can be found in tier III (IFAD's operational and organizational performance). The main outcome for action area 2 is IFAD's increased capacity to successfully engage rural youth. This outcome will substantially contribute to improving IFAD's capacity to deliver on indicator 3.4.1 (overall rating for quality of project design). The outcomes for action areas 3 and 4 pertain to IFAD's capacity to advance in knowledge management, communications, policy engagement, advocacy and partnership-building for rural youth. Results in these areas will support overall achievement against indicators 3.3.4 (Partnership building), 3.3.5 (Country-level policy engagement), 3.3.6 (Knowledge management) and 3.3.7 (SSTC in COSOPs).

## iii) Monitoring and evaluation

41. To ensure that these results are monitored and can be reported, quantitative outputs and outcomes will be monitored through the use of IFAD core indicators.<sup>12</sup> In line with corporate reporting requirements and structure, information about results will be gathered from project M&E systems and reflected in IFAD's Operational Results Management System (ORMS). In qualitative terms, information will be captured from other IFAD corporate knowledge assets for each action area. Both quantitative and qualitative information will feed into the Report on IFAD's Development Effectiveness (RIDE). Overall performance will be measured against selected output and outcome targets in the IFAD11 Results Management Framework. Monitoring delivery of the RYAP will be a collaborative effort between different divisions and departments in IFAD, to be led by the Strategy and Knowledge Department, along with the entire Programme Management Department (in particular for action area 1) and the External Relations and Governance Department. A review of a sample of IFAD9 and IFAD10 projects will serve as a reference in tracking results against the objective of mainstreaming youth in 50% of design projects and 100% of COSOPs during IFAD11.
42. Under action area 1: (i) project-level M&E systems will disaggregate outputs and outcomes by age, in line with the updated IFAD11 Results Management Framework, showing the number of young people reached. Qualitative information will be sought through lessons learned collected from the supervision, mid-term and completion reports, as well as the proposed annual/mid-term and completion reviews for COSOPs; (ii) project development teams and quality assurance meeting

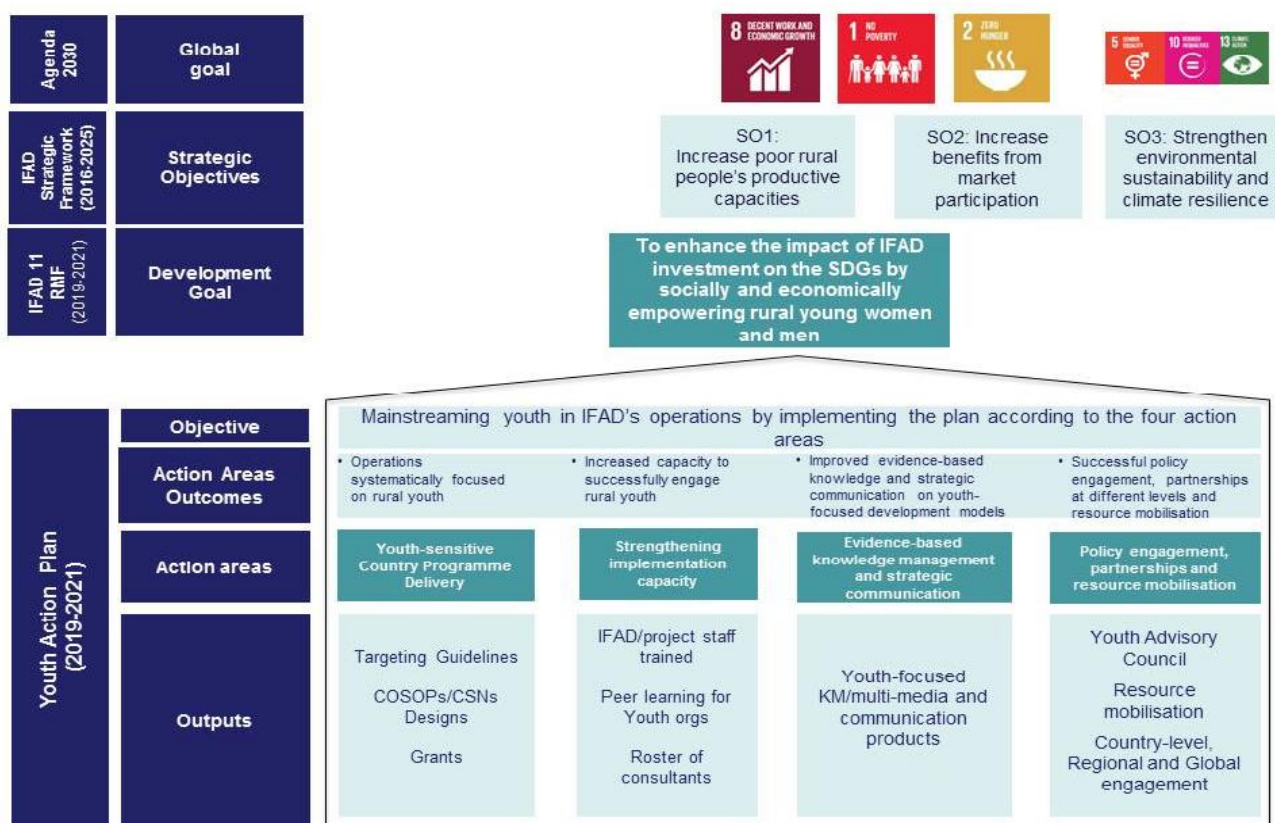
<sup>11</sup> The three tiered results management framework can be consulted in the "Leaving no one behind: IFAD's role in the 2030 Agenda. Report on the Consultation on the Eleventh Replenishment of IFAD's resources" (IFAD,2018) document

<sup>12</sup> Taking IFAD's Results and Impact Management System (RIMS) to the Next Level, EB 2017/120/R.7/Rev.1.



- minutes will allow tracking of the type of recurring issues/successes in IFAD's work with rural youth; (iii) regional portfolio stocktakings will summarize both quantitative and qualitative results in regard to youth engagement.
43. Under action area 2: (i) reports from the Learning Management Systems will provide quantitative information on the number of staff trained; and (ii) the annual performance evaluation systems for staff will report on the training delivered under the Operations Academy.
  44. Under action area 3: Internal and external blogs, the IFAD Research Series, the Rural Solutions Portal, the IFAD website and regional implementation workshops are only some of the assets that will provide platforms to share knowledge on IFAD's work on youth (and to monitor use of this knowledge).
  45. Under action area 4: (i) project evaluations and stocktaking on policy engagement will track IFAD's input into policies and advocacy at global level; and (ii) reports on engagement with the Rural Youth Advisory Council will track policy shifts against the commitments made during its meetings.
  46. Other evaluation streams will be through Annual Report on Results and Impact of IFAD Operations, IOE country evaluations and the RIDE system. Research will be conducted by RIA and ECG in areas/countries where intensive work has been done with rural youth, to gather additional knowledge and lessons.

Figure 2: Rural Youth Action Plan Results Framework



iv) Learning

47. Through a strategic and coordinated use of grants, research and the specialized knowledge of staff and partners – including through communities of practice and networks – lessons from operations will be captured and fed into project design

and implementation. Partnerships will be leveraged to ensure that knowledge is useful, is used in regional hubs and at country level, and supports policy engagement, scaling-up strategies and SSTC. Considering that insufficient access to knowledge and limited information and education are among the challenges impeding the productivity of rural youth, training and capacity development activities that target local project staff and young people in IFAD projects will ensure that the learnings outlive the IFAD projects.

## B. Principles of engagement

48. It is now widely understood that targeting rural youth requires a differentiated approach to take into consideration cultural sensitivity and an understanding of the local contextual factors. The RYAP proposes the following principles to engage with rural youth:

- All operations and strategies should recognize the heterogeneity of youth, especially in terms of gender, age, education, ethnicity, culture sensitivity, and socio-economic category. A life cycle approach will also be used to seek to be inclusive of all ages and all needs;
- Youth strategy and policy in the country of intervention will prevail in the design of specific approaches and activities, including the definition of age brackets and thematic areas;
- IFAD will adopt a holistic mainstreaming approach that integrates youth, gender, nutrition, and environment and climate, to achieve sustainable and transformative results;
- The principle of authorship shall be applied, so that successful youth engagement will depend on the capacity to respond and support youth-led initiatives entirely owned and created by youth;
- A focus on innovations will attract the interest of youth and promote its effective engagement; and
- Strategic partnerships will be necessary to achieve the above stated principles and to address topics where others have comparative advantage, while ensuring results-based accountability.

### i) Integrating youth within governance

49. This is a key sub-theme under action area 4. Incorporating young people into governance structures and decision-making processes should cut across all IFAD operations. IFAD will work closely with the Rural Youth Advisory Council (RYAC) that will be established to plan for the strengthening of youth inclusion in governance. The ECG, in close collaboration with the Governing Council, will define and implement a field-level Youth Engagement Toolkit (YET), building on existing practices. The baseline for the YET will be an inventory of existing approaches used in IFAD's projects and assessment of the results to date, and will include the main elements for integrating young people in the IFAD-supported country programmes, including how young people can engage with the IFAD Governing Council, the Executive Board, and national and local IFAD partners.

### ii) Young women

50. Young women face a double challenge of being young and being female, due to gender-biased norms, a higher chance of being married and pregnant at an early age, limited physical mobility, and more household responsibilities. The RYAP recognizes these issues and will borrow from IFAD's gender work and its very rich and extensive experience in mainstreaming rural youth, capturing the lessons learned and applying a youth lens when adopting and adapting gender-sensitive tools such as the Gender Action Learning System (GALS) and the Women's Empowerment in Agriculture Index (WEAI). The RYAP will also take into account the implementation capacity needs and ensure that workshops and capacity development activities incorporate a more gender-sensitive angle.



## C. Main thematic areas

51. As a core element of its operational model, all IFAD-supported investment projects are designed on the basis of context-specific assessments, alignment with the government's priorities, identification of suitable implementing partners and consultations with the main stakeholders. Notwithstanding this diversity, there are a number of common thematic areas that are crucial to the rural youth agenda.

Off-farm business is the beginning. A study focusing on SSA off-farm enterprise dynamics concluded that: (i) the prevalence of non-agricultural enterprises in rural areas is highest among young adults aged 25 to 35 years, with significant variability between countries; (ii) the number of self-employed non-agricultural business owners increases in particular after the age of 25, and consequently age is a relevant factor in determining the functioning of micro- and small-sized enterprises among rural youth; (iii) increasing age correlates with higher participation in non-agricultural enterprises for income generation; (iv) at a younger age, non-farm entrepreneurship is complementary to school activities: 48 per cent in Ethiopia, 44 per cent in Malawi, 63 per cent in Nigeria and 53 per cent in Uganda, and; (v) there is low participation on the part of the young adult population in wage/employment activities, ranging from 4 per cent in Ethiopia to 12 per cent in Uganda.

### i) Youth employment

52. Youth employment is an alarming issue in both developed and developing countries, and in both urban and rural areas. Rural youth are predominantly in vulnerable employment and in low-skilled jobs. An ILO report<sup>13</sup> found that over the past 20 years youth participation in the labour force has declined by almost 10 percentage points, from 55 per cent in 1997 to 45.7 per cent last year, with a slight decrease in the gender gap from 17.3 per cent to 16.6 per cent over the same period. In rural areas, especially in developing and emerging countries, it is reasonably foreseeable that this reality becomes even more acute. According to a recent OECD report,<sup>14</sup> agriculture is the main provider of jobs for rural youth (corresponding to 36.6 per cent of all rural youth employment).
53. Against this backdrop, generating quality jobs and services and promoting decent work to support rural employment are key to the achievement of an inclusive rural transformation and contributing to achievement of the SDGs, while also preventing this demographic growth from becoming a source of tension and social conflict.
54. A key factor in the success of greater youth inclusion will be technical innovation and the involvement of new technologies (including ICTs) that are already shaping local food systems and value chains processes – technologies that increase efficiencies and reduce transaction costs while creating more ICT-related job prospects for the rural youth<sup>15</sup> who are more likely to adopt such technologies. Not leaving rural women behind is crucial for leveraging the potential of these

A successful model for youth entrepreneurship Songhai is a non-profit social enterprise empowering rural African communities – particularly farmers, youth and women – by building their capacities to become entrepreneurs in agricultural production, agribusiness and handicrafts. Songhai's experience shows that an effective way to combat poverty is to build the capacities of young entrepreneurs. The organization trains these youth to develop a clear vision of their goals in life and then to pursue them. It stimulates the youth to constantly develop their potential and that of their communities and countries. At the moment Songhai is working in seven states in Nigeria, Benin, Liberia, Sierra Leone and Congo.

<sup>13</sup> Global Employment Trends for Youth 2017 Report. [http://www.ilo.org/wcmsp5/groups/public/---dgreports/---dcomm/---publ/documents/publication/wcms\\_598669.pdf](http://www.ilo.org/wcmsp5/groups/public/---dgreports/---dcomm/---publ/documents/publication/wcms_598669.pdf)

<sup>14</sup> [https://www.oecd-ilibrary.org/development/the-future-of-rural-youth-in-developing-countries\\_9789264298521-en](https://www.oecd-ilibrary.org/development/the-future-of-rural-youth-in-developing-countries_9789264298521-en)

<sup>15</sup> Report on Rural Youth Employment, 2017, World Bank/IFAD

technologies.. Successful models such as those developed by the “agripreneurs” initiatives of Songhai and the International Institute of Tropical Agriculture (IITA) will be explored and adapted for IFAD projects.

## ii) Youth entrepreneurship

55. Rural enterprises are constrained by a lack of adequate energy supply options; this gap is a critical barrier to the transformation of youth farmers into entrepreneurs all along the value chain and to the creation of both on- and off-farm employment opportunities.
56. Energy availability in rural areas therefore increases opportunities for business development and rural employment by tapping into the manifold roles that young people can play in terms of technology uptake and support to innovative models that range from farm information systems, mechanized farm services and off-grid energy solutions for homes and small businesses, to solutions for powering irrigation technologies. IFAD is carefully looking at the issue of opening up access to affordable and readily available energy. A specific approach for renewable energy for smallholder agriculture is currently being developed, with the ultimate objective of mainstreaming renewable energy technologies (RETs) in IFAD's operations, with youth getting opportunities to leverage the multiple benefits coming from increasing investments in RETs.

### Access to land

- As a case study, Madagascar showcases common challenges faced in young rural women's access to land: (i) even though there are no discriminatory laws against women in respect of access to land, there are strong de facto inequalities; (ii) 70 per cent of young women do not inherit land (as against 22 per cent of young men); (iii) young women obtained more land through donations from family members (20 per cent, as against 10 per cent of men); (iv) young women have less land than men (47 per cent of women have less than 0.05 ha, while only 5 per cent of men have less than 0.05 ha).
- In Senegal, IFAD's value chain project (PAFA) worked with youth associations (the Association Sportive et Culturelle, ASC) to negotiate access to land with their respective families.
- IFAD's Orissa Tribal Empowerment and Livelihoods Programme in India has promoted development of the capacity of young people as community resource persons (CRPs): educated local village youth are trained to identify landless households in project villages and vacant village land and to assist the landless households in securing land and land titles.

## iii) Access to land and natural resources

57. For IFAD the lack of access by young people to land and natural resources is a result not only of the scarcity of these assets, but is determined above all by the lack of an enabling policy and regulatory environment to make agriculture a profitable and attractive business for young people. This scenario is further compounded by cultural barriers and customary laws, together with a lack of awareness of their rights and of policies in this area.<sup>16</sup> Moreover, since many young people are reluctant to engage in the back-breaking, low-return forms of farming carried out by their parents, their demand for agricultural land and their willingness to invest their energies and resources in it are often limited. Engaging young people in dialogue concerning specific policies and legal frameworks regarding land and natural resources issues is crucial. In this regard, the Voluntary Guidelines for Responsible Governance of Land Tenure, Forests and Fisheries (VGGTs-FAO)<sup>17</sup> and the AU Declaration on Land Issues and Challenges in Africa represent a step forward in specifying the processes and rights and duties of the actors involved, including rural youth.
58. It is expected that through the RYAP, IFAD will contribute to generating specific information and analysis on youth land access processes, their gaps and

<sup>16</sup> IFAD. Lesson learned: Youth and land tenure. 2014.

<sup>17</sup> FAO. Voluntary guidelines on the responsible governance of tenure of land, fisheries and forests in the context of national food security. <http://www.fao.org/cfs/home/activities/vggt/en/>

opportunities, and to including them as evidence in the dialogue and negotiation of tenure governance processes and in project design documents<sup>18</sup>.

#### iv) Access to finance

59. Several barriers are encountered by rural youth in accessing the regulated financial market, including the following: (i) the great physical distance between the branches of the financial service providers and rural communities is costly in terms of both time and transportation; on this particular aspect, IFAD has identified digital financial services that target smallholder farmers in rural areas and their specific needs;<sup>19</sup> (ii) the financial capacity of rural communities is affected by weather and commodity risks; (iii) legal and regulatory restrictions make it difficult for underage people to open a bank savings account, apply for a loan or contract and take out insurance; (iv) the lack of assets for collateral; (v) young people are seen as not bankable; (vi) financial institutions are not affordable nor accessible; and (vii) the financial services and products available in the rural areas do not always support the life strategies of youth.<sup>20</sup> In addition, access to finance is more difficult for rural young women.

Access to finance. In Nigeria, young people were given start-up loans, but the recipients had to cover 10 to 20 per cent of the investment; if they repaid 50 per cent of the loan within 12 months, the remaining 50 per cent became a grant from the community. Similarly, in Ghana the Rural Enterprise Project (REP) began distributing free start-up kits once the project realized that following their training, youth were unable to access capital. In Mali and Cameroon, projects work with financial intuitions to develop youth-sensitive financial products for credit and savings groups. In Moldova, the Rural Financial Services and Agribusiness Development Project (RFSADP) provides investment loans to young entrepreneurs, plus the associated technical assistance, training and capacity-building to both borrowers and participating financial institutions. By the end of 2017, more than 418 new business enterprises had been initiated and 399 entrepreneurs saw their businesses expand.

#### v) Access to technology

60. Youth are more likely than adults<sup>21</sup> to learn, use and adopt technologies in a variety of areas such as microfinance, advocacy, entrepreneurship, digital citizenship and media,<sup>22</sup> including in addressing drudgery aspects. Technology can therefore make a key impact on youth employment by providing new jobs and business start-up opportunities<sup>23</sup> and opportunities for acquiring new skills, with different training formats available through the Internet and mobile phones.
61. In 2016, about 95 per cent of the global population lived in an area covered by a cellular mobile phone network.<sup>24</sup> However, access to the Internet is still a challenge in developing countries, with an urban/rural digital divide.

### D. Emerging themes

<sup>18</sup> Some examples of solutions proposed by IFAD in the document of Lesson Learned on land and youth issues (2014) are: Strengthen legislation, local institutions and legal services to ensure that young people's land rights are recognized and upheld; Develop land markets and support the inclusion of young people into them through specific financing and credit mechanisms and specific economic incentives; Identify and promote non-agricultural economic activities or small-scale (small farm) or land-intensive productive activities (or) with a focus on rural youth

<sup>19</sup> How to Do Note: Digital financial services for smallholder households.

<sup>20</sup> IFAD (2015). How to Do Note: Youth Access to Rural Finance.

<https://www.ifad.org/documents/10180/4a78941c-4bcb-44f8-b5fb-b493a98720e0>

<sup>21</sup> World Bank (2016). Digital Dividends. World Development Report 2016.

<http://www.worldbank.org/en/topic/digitaldevelopment/overview>

<sup>22</sup> United Nations (2009). A Digital Shift: Youth and ICT for Development.

<http://unpan1.un.org/intradoc/groups/public/documents/gaid/unpan036084.pdf>

<sup>23</sup> United Nations (2009). A Digital Shift: Youth and ICT for Development:

<http://unpan1.un.org/intradoc/groups/public/documents/gaid/unpan036084.pdf>

<sup>24</sup> World Bank (2016). Digital Dividends. World Development Report 2016:

<http://www.worldbank.org/en/topic/digitaldevelopment/overview>

62. In addition to the main thematic areas that are key to rural youth, there are emerging themes (such as youth with disabilities and child labour) for which IFAD has been requested to increase its efforts or to start devoting more attention. IFAD is keen to carefully craft its interventions to align with these themes, which overlap with other mainstreaming topics and will foster youth inclusion and create employment prospects while also having other positive spill over benefits and strengthening its partnerships with those agencies already spearheading these issues, as explained in action area 4. IFAD's modality for delivering on these issues will ensure further collaboration with the Rome-based agencies (RBAs), other IFIs and non-governmental organizations, and will also be aligned with the UN reform agenda.

### i) Decent work

63. Decent work is work that provides people with a fair income and in addition is undertaken in conditions of freedom, equity, security and human dignity. Decent work has been included as a human right in international law<sup>25</sup>; Goal 8 of the 2030 Agenda for Sustainable Development focuses on decent work<sup>26</sup>.

64. The Global Initiative on Decent Jobs for Youth is the first ever comprehensive system-wide United Nations effort to maximize the effectiveness of youth employment investments worldwide.

65. The initiative – to which IFAD is called on to contribute – aims to build a strategic alliance, scale up action and impact, share and apply knowledge and mobilise resources. Approximately 70 per cent of child labourers – an estimated 100 million children aged 5 to 18 – work in agriculture<sup>27</sup>. It has been difficult to address child labour in agriculture<sup>28</sup>, and this issue is seldom included in policies and programmes targeting rural youth. For this reason, a good strategy for rural youth should acknowledge that every agricultural policy and programme targeting them may have an impact on child labour, even if it does not target child labour itself.

66. Finally, a serious concern is the increase in hazardous work among young adults, highest in agriculture, and in terms of injuries is particularly hazardous for working youth<sup>29</sup>. As one of the founding members of the International Partnership for Cooperation on Child Labour in Agriculture (IPCCLA), IFAD has been involved in advocating against child labour in agriculture. Last November it participated in the IV Global Conference on the Sustained Eradication of Child Labour. As a follow-up, a seminar was jointly organized with FAO to advocate and raise awareness on the issues of child labour in agriculture.

### ii) Adolescent girls

67. Social norms and traditions are keeping young women and girls from achieving their potential and aspirations, perpetuating gender-based discrimination and violence. Some country context specificities do not allow enforcement of national laws, nor implementation of international conventions on young women's rights (such as the Convention on the Elimination of All Forms of Discrimination against Women - CEDAW).

68. Child, early and forced marriages are still prevalent in rural communities, above all where there is no access to education. Adolescent girls face specific nutrition issues during their reproductive age. In developing countries, 75 per cent of women's

<sup>25</sup> Article 23 of The Universal Declaration of Human Rights.

<sup>26</sup> Sustainable Development Goal 8 reads “promote sustained, inclusive and sustainable economic growth, full and productive employment and decent work for all”.

<sup>27</sup> [http://www.fao.org/fileadmin/user\\_upload/fao\\_ilo/pdf/Other\\_docs/Safer-Agricultural-Practices-FAO-experiences.pdf](http://www.fao.org/fileadmin/user_upload/fao_ilo/pdf/Other_docs/Safer-Agricultural-Practices-FAO-experiences.pdf)

<sup>28</sup> <http://www.fao.org/docrep/017/i3098e/i3098e.pdf>

<sup>29</sup> [http://www.ilo.org/wcmsp5/groups/public/@dgreports/@dcomm/@publ/documents/publication/wcms\\_155428.pdf](http://www.ilo.org/wcmsp5/groups/public/@dgreports/@dcomm/@publ/documents/publication/wcms_155428.pdf)

employment is informal and unprotected. When living in vulnerable climatic conditions, the amount of time spent on household chores such as fetching water is even greater for young women and girls. Their role in decision-making processes is still very limited and they are often absent from civic participation. In recent years, the focus has shifted to girls as agents of economic change. The UN is promoting equal rights and opportunities for girls, and a life free of violence and discrimination (SDG 5), through global alliances and partnerships.

### iii) Indigenous youth

69. It is estimated that there are more than 370 million indigenous persons in the world, approximately 45 per cent of whom are between 15 and 30 years of age.<sup>30</sup> They comprise a multitude of multidimensional identities and cannot be considered a homogeneous group. Targeting criteria should thus also encompass indigenous peoples' understanding of who is young within their own societies and the inter-generational relationship between elders and youth in transferring knowledge and roles within their societies.<sup>31</sup>
70. Many indigenous youth face immense challenges: inter-generational effects of colonization and assimilation policies; ongoing struggles to have their rights and identity recognized and protected;<sup>32</sup> geographic disadvantages; the lack of culturally appropriate education; high illiteracy and dropout rates; discrimination and marginalization; displacement and the loss of land; the lack of legal protection; and forced migration.
71. Many indigenous youth organizations are already organizing themselves to partner and work towards addressing these challenges. For instance, at the global level the Global Youth Indigenous Caucus (GYIC), formed by representatives from several indigenous youth regional and country networks, has put forth a set of recommendations for UN agencies through the Rome Statement on the Contribution of Indigenous Youth towards a World Without Hunger.

### iv) Youth with disabilities

72. Youth with disabilities make up between 180 and 220 million people worldwide, nearly 80 per cent of whom live in developing countries.<sup>33</sup> In rural contexts, they are more likely to be illiterate, out of school, unemployed and poor.
73. The Washington Group on Disability Statistics is working on the production of population-based measures of disability that are comparable cross-nationally,<sup>34</sup> which will contribute to the availability of better data on people with disabilities, including disabled youth. Understanding how disability is related to poverty will make it possible to design effective programmes and policies that are capable of reaching disabled youth.
74. Several IFAD-supported programmes and projects have identified people living with disabilities as one of their target groups. In China, for example, IFAD has successfully developed a partnership with the Disabled Persons' Federation, with the objective of enhancing the skills of rural women and economically capable disabled persons for employment and income generation. In addition, building on the results of the global discussions regarding "disability", such as the Global Disability Summit, IFAD will enhance its efforts for the identification and further

---

<sup>30</sup> IWGIA. The Indigenous World 2018.

<sup>31</sup> Indigenous youth: Identity, challenges and hope: Articles 14, 17, 21 and 25 of the United Nations Declaration on the Rights of Indigenous Peoples.

<sup>32</sup> The state of the world's indigenous peoples: Indigenous peoples' access to health services.

<sup>33</sup> <https://www.un.org/esa/socdev/documents/youth/fact-sheets/youth-with-disabilities.pdf>

<sup>34</sup> <http://www.washingtongroup-disability.com/>



development of partnerships with those organizations operating in this specific field, such as UNICEF, Save the Children, and Humanity & Inclusion.

## V. Action areas

75. The Plan will be implemented through a series of activities grouped into four action areas: (i) mainstreaming youth within country programme delivery; (ii) strengthening implementation capacity; (iii) evidence-based knowledge management; and (iv) policy engagement, advocacy and partnership. Each action area will be described in terms of its main deliverables – its activities, outputs and outcomes.

### A. Action area 1: Youth-sensitive country programme delivery

76. In accordance with IFAD11 commitments, IFAD will update its targeting guidelines to also focus on young poor rural women and men. The guidelines will be recalibrated to ensure that the principles, methods and operational instruments take into account a rural youth dimension, paying specific attention to the heterogeneity among young rural women and men and their cultural sensitivity. Adequate emphasis will be placed on disabled young people.

77. All country strategic opportunities programmes (COSOPs) and country strategy notes (CSNs) will be formulated on the basis of the following activities: (i) an assessment of the in-country youth situation; (ii) a review of existing youth policies and ongoing youth programmes on the part of government and development partners; (iii) consultation with youth organizations throughout the project cycle; (iv) identification of potential strategic partners with competencies on youth issues; and (v) the definition of strategic objectives and entry points that can attract youth aspirations and bring comparative advantages. The current COSOP guidelines will be amended in order to achieve this.

78. It is expected that 50 per cent of new IFAD-supported project designs will be youth-sensitive, with inclusion of the following: (i) a rural youth socio-economic profile, assessing their different subgroups; (ii) consultation with youth organizations throughout the project cycle; (iii) clear identification of rural youth as a target group, with description of the targeting strategy for reaching them; and (iv) the inclusion of age-disaggregated indicators for monitoring purposes. Hence the existing tools will be enhanced to enhance socio-economic assessments and the consultation processes to make them youth-sensitive. Projects will be supported to report age-disaggregated M&E indicators.

79. IFAD's experience has already demonstrated that certain design provisions can enhance the extent to which rural youth will be reached during project implementation. These include: (i) a budget allocating financial resources for youth participation; (ii) recruitment and training of dedicated staff to promote youth inclusion; (iii) establishing quotas for outreach to young people; (iv) secured access to land; (v) contracting of service providers; (v)

#### Characteristics of youth-sensitive programming

##### Targeting and approaches

- Conduct a socio-economic and institutional analysis; explicitly include young women and men in the targeting strategy; and maintain a gender focus;
- Ensure that targeted smallholder organizations include youth members within their membership structures.

##### Activities

- The use of integrated interventions – including enterprise development, decent working conditions and social protection, and attractive organizational models, rather than “general” rural development projects – is most effective in stimulating productive and attractive jobs for youth in rural areas.
- lead to synergies that strengthen, broaden and sustain the impact on decent and productive work for youth. Training of young women and men should aim to strengthen their potential both in the labour market and as self-employed entrepreneurs.
- Linkages between relevant national policies and programmes can

Source: IFAD-ILO initiative (2010-2012); Project Design and Supervision Reports

specific financial products and non-financial services tailored to youth; and (vi) enhancing ownership, through the participation of representatives of rural youth throughout the project cycle, including in planning and in monitoring and evaluation.

80. A "Youth Engagement Guidance Note" will be developed to support the design of youth-sensitive projects and to ensure effective youth engagement. The focus will be on: business development; credit/equity financing of youth-owned enterprises; the use of modern technologies; leveraging migrant remittances to spur investments; vocational/technical training; agricultural risk management; and activities aimed at involving youth as key stakeholders in the governance structures of farmers' organizations. Intervention activities will focus not only on primary production activities, but will also consider upstream and downstream business opportunities for young people all along the value chain.
81. The selection of early mover countries will respond to the urgent need to effectively engage with rural youth at country level, with quick returns. The criteria for selection are based on the following:
- The existence of a national youth policy and/or action plan that is aligned with IFAD11 priorities, exhibiting: (i) a clear potential for commercial viability for smallholder farming; (ii) a willingness to cost-share and share risk in testing new ideas that are beneficial to youth, such as innovative ICT solutions that go beyond what exists now in terms of products/services in the agricultural sector, combining delivery mechanisms, new business models and market reach;
  - A readiness to adopt a poverty targeting approach with a youth focus, underpinned by a gender perspective/balance reflected in the youth beneficiaries, the activities and the project delivery staff;
  - A governance structure and decision-making mechanisms, including consultative processes for the formulation of priorities and action programmes enabling the participation of young people and their organizations;
  - A demonstrated culture of sufficient and consistent monitoring of development investments benefiting young people; and
  - A willingness to facilitate and engage in SSTC links and partnerships, including government-to-government and community-to-community.
82. The ECG will work closely with the regional divisions to tap into IFAD's grant windows to test new ideas, development models, and institutional and technological innovations where youth can demonstrate their comparative advantage with their creativity, energy, and risk-taking capacity (for example in ICTs and rural energy). The current grant portfolio already includes several innovative endeavours that have a strong potential to be replicated and mainstreamed through IFAD's own portfolio.

### Summary of expected outputs for action area 1

| Action area   | Outcome   | Outcome indicators   | Outputs  | Output indicators  |
|---|---|--|--|--|
| Action area 1:<br>Youth-sensitive country programme delivery              | COSOPs, CSNs, loan- and grant-funded operations systematically focused on rural youth | i) Percentage of country programmes that deliver results for young people (according to RIMS indicators);<br>ii) Number of investment projects that make use of youth-focused/youth-produced innovations/product | i) 100% of COSOPs and CSNs reflect a youth-sensitive approach<br>ii) 50% of all projects are youth-sensitive<br>iii) M&E systems with age-disaggregated indicators | i) Percentage of COSOPs and CSNs that are youth-sensitive<br>ii) Percentage of new loan-funded projects that are youth-sensitive<br>iii) Number of M&E systems with age- and gender-disaggregated data (in line with the new RIMS) |
| Mainstream rural youth within investment projects, country strategies and |   |  |  |  |

|   |   |
|---|---|
| country,<br>regional and<br>global grants | s originated by<br>grant-funded<br>projects |
|---|---|

## B. Action area 2: Strengthening implementation capacity

83. Mainstreaming rural youth within field operations will require efforts in strengthening implementation capacity at various levels. Capacity development will be carried out for two differentiated but interrelated target groups, described below.
84. The youth team at IFAD HQ, along with the Gender and Social Inclusion Officers in the hubs, will jointly facilitate a learning process under the Operations Academy for hub and country staff, based on an integrated mainstreaming module which will be developed during the first quarter of 2019. The training sessions for IFAD staff will be aligned with the ongoing IFAD Corporate Decentralization Plan, targeting in particular IFAD staff at country and sub-regional levels.
85. Development of the learning modules will build on and complement existing in-house learning tools and knowledge products, and will leverage knowledge resources from external partners as and when needed. A rapid assessment will be carried out of available in-house knowledge resources and those from external partners that are relevant, to inform development of the learning modules. Existing tools include: (i) IFAD's technical How to Do Toolkits; (ii) the Gender Action Learning System (GALS); and (iii) the Women's Empowerment in Agriculture Index (WEAI). The modules will be differentiated based on capacity needs in order to cater for IFAD staff, service delivery agents at country level, and grass-roots user organizations – particularly youth-based organizations.
86. IFAD will strengthen the capacity of both public and private service providers to enable them to engage young people. Specific interactive learning and mentoring opportunities to develop the capacities of primary stakeholders at country level will be integrated into development projects, to strengthen their abilities to adequately engage with and to put rural young people at the centre of rural transformation investments.
87. The capacity of rural young people will be developed through specific skills enhancement activities that are built into IFAD-supported country programmes, as well as through direct engagement with IFAD at corporate level through the Rural Youth Advisory Council. IFAD will also provide implementation support to all projects, which will include rural youth as significant beneficiaries to generate innovative knowledge products for interregional learning. These activities will support development of outputs in action area 3.
88. . A pool of experienced consultants will also be mobilised to further improve design and implementation capacities. This improved capacity on the part of the delivery agents will consolidate the technical/human resources needed to facilitate the empowerment and strengthening of young people's capabilities to gain needed skills to take advantage of investment options created by IFAD-supported country programmes, as foreseen under action area 1.
89. IFAD will work closely with the Rural Youth Advisory Council (RYAC) to serve as an interlocutor to strengthen youth inclusion, for more structured consultations and strategic dialogue between IFAD and rural youth representatives. At a community level, the RYAP aims to also ensure that existing governance structures and socio-cultural norms that exclude rural youth are carefully assessed during design, and proposals will be sought in a participatory manner to support adjustments that offer youth opportunities to participate in the decision-making process.



90. Preference will also be given to strengthening the capacities of youth-led organizations at individual skills and organizational systems levels, leveraging the diversity of existing learning methods/tools, such as the household methodologies, Farmer Field Schools, Farmer Business Schools, Junior Life Schools and Learning Routes. Regional hubs will organize yearly awards to recognize the best performing youth-sensitive projects. These contests will not only offer learning opportunities, but will also be effective in championing and providing incentives for change in the sub-regions and a straightforward way to keep a global map of successful IFAD youth-sensitive rural interventions up to date. This map will be also be a useful resource for informing South-South and Triangular Cooperation.
91. IFAD will work within the partnership frameworks with FAO and ILO, as and when needed, to deepen their collaboration to include specific field-level operational arrangements, not only in the training of IFAD and project staff but also to support the policy engagement process with key in-country policymakers and implementation partners.

### Summary of expected outputs for action area 2

| Action area   | Outcome   | Outcome indicators   | Outputs   | Output indicators  |
|---|---|--|---|--|
| Action area 2: Strengthening implementation capacity<br><br>Strengthen the technical and managerial capacities of IFAD staff and stakeholders associated with youth-focused investment projects | Increased capacity of IFAD and project staff; implementing partners successfully engaging rural youth | i) Number of IFAD and project staff and partners applying knowledge on how to successfully engage rural youth;<br>ii) Number of youth-led organizations actively engaging in knowledge-sharing with each other | i) Capacity development plan<br>ii) Three training modules, including Training of Trainers options for IFAD/project staff and implementing partners<br>iii) Jointly with the gender, nutrition and climate change themes, deliver three training sessions in the operations academy<br>iv) Roster of experienced consultants and service providers available to support design and implementation of rural youth initiatives<br>v) A minimum of 50% of all youth within the IFAD projects targeted to participate in skills development training<br>vi) Three learning events carried out for youth-led organizations<br>vii) Annual awards and events processes for best performing projects<br>viii) Youth engagement guidance note | <ul style="list-style-type: none"> <li>Number of modules on rural youth developed for IFAD's Operations Academy</li> <li>Number of staff who successfully conclude the Operations Academy training</li> <li>Number of service providers/individual consultants mobilised by region and available on the roster</li> <li>Number of trainings carried out</li> <li>Percentage of youth within each IFAD project target group that has participated to in skills development trainings</li> <li>Five annual awards undertaken (within the three-year RYAP cycle)</li> </ul> |

### C. Action area 3: Evidence-based knowledge management and strategic communications

92. The purpose of this action area is to: contribute to policy engagement; apply strategic communication approaches in order to increase IFAD's visibility in its pursuit of promotion of the youth agenda; and improve project design and implementation. The RYAP will also contribute to IFAD's communications and knowledge management objectives of identifying, developing and promoting successful and innovative approaches and interventions that have demonstrated potential to be scaled up. It should be noted that the IFAD11 consultation report indicates that IFAD will ensure that all new COSOPs and IFAD-funded projects will seek to incorporate a communications and visibility dimension. In addition, IFAD has committed to updating its communication strategy by the third quarter of 2019. The revised strategy will lay out a consistent expanded dynamic approach to strategic communication across the mainstreaming areas, including youth. As a cross-cutting dimension of its operational model, with it IFAD can enhance the impact of its operations as well as the quality of its policy engagement with local governments and community organizations, by learning and sharing the

experiences in working with young people that are generated from its portfolio of loan and grant activities.

93. IFAD is also in the process of developing a new knowledge management (KM) strategy aimed at making KM more effective, tailored to the new organizational structure and fully aligned with the enhanced business model. The objective is that IFAD improve its ability to use the best available evidence-based and experiential knowledge to achieve greater visibility, credibility and influence, and higher-quality operations.
94. Knowledge products will respond to specific needs of identified target audiences. IFAD will build the evidence base through: (i) effective monitoring and evaluation activities; (ii) documentation of good practices; and (iii) strategic knowledge-sharing. The inclusion in its RIMS policy of mandatory age-disaggregated indicators will enable IFAD to effectively monitor the results for rural youth that are achieved in its portfolio. Likewise, existing partnerships with OECD and WB can give IFAD access to global/regional data on youth.
95. The knowledge generated will be strategically communicated through a variety of digital platforms and more traditional tools and channels targeted to various IFAD audiences, including through social media and IFAD's corporate website. Knowledge will also be shared at special events such as the regional implementation workshops, country portfolio reviews and knowledge fairs.
96. One additional special output will be a contribution of five case studies to the next Rural Development Report (RDR) to be released in 2019, which will focus entirely on the rural youth agenda.

### Summary of expected outputs for action area 3

| Action area   | Outcome   | Outcome indicators   |      | Outputs  | Output indicators  |
|---|---|--|------|--|--|
| Action area 3: Evidence-based knowledge management and strategic communications. Build and manage the evidence base to support better project design and implementation, and effective policy engagement and strategic communications | Improved generation and use of strategic communications and evidence-based knowledge around successful youth-focused development models | i) Usefulness/application and accessibility of youth-focused communication and knowledge products authored by IFAD | i)   | An IFAD youth-specific knowledge generation and dissemination plan   | <ul style="list-style-type: none"> <li>• The number of studies and databases compiled that are focused on rural youth</li> <li>• The number and type of youth-focused KM multimedia products for project design, implementation and policy engagement</li> <li>• The number of downloads from IFAD's Rural Youth web page</li> <li>• The number of corporate events that include rural youth as a topic</li> </ul> |
|   |   |  | ii)  | A number of IFAD-specific case studies focusing on rural youth, as a contribution to the Rural Development Report 2019 |  |
|   |   |  | iii) | Six youth-focused multimedia knowledge products  |  |
|   |   |  | iv)  | A number of knowledge-sharing events around regional portfolio reviews and South-South and Triangular Cooperation      |  |

#### D. Action area 4: Policy engagement, partnerships and resource mobilisation

97. Building on activities identified in action area 3, IFAD's specific approach is to: (i) engage on the basis of the evidence of what works and what does not; (ii) implement this engagement, both directly and through the relevant international and local stakeholders, supported by country-specific knowledge products; (iii) mobilise resources to support the implementation of the action plan; and (iv) foster and strengthen partnerships, particularly between organizations that have comparative advantages on different issues affecting young people at country level.
98. A key priority will be to harness the existing effective policy engagement mechanisms to ensure that rural youth voices and needs are included in the national policymaking processes. According to IFAD's new decentralized model,

IFAD's country directors and Country Programme Managers will be supported in their policy engagement tasks in line with the provisions of the Plan.

99. IFAD will foster strategic partnerships with key institutions that have a comparative advantage on different issues. For example, OECD is keen to support IFAD's research needs and has developed a policy toolkit that can support governments to analyse youth-specific issues. As already mentioned, ILO and FAO are willing to join forces to advocate around decent rural employment and child labour, and have invited IFAD to participate regularly in the International Partnership for Cooperation on Child Labour in Agriculture (IPCCLA) and the global initiative on decent employment. Likewise, partnering with UNFPA, Oxfam and Save the Children on issues related to adolescent girls and nutrition could strengthen IFAD's advocacy activities. The Fund will also seek to partner with bilaterals for joint advocacy initiatives at national and international level, as well as with private-sector actors interested in supporting the youth agenda and youth entrepreneurship.
100. IFAD will identify a goodwill ambassador and work closely with her/him to raise awareness at country, regional and international level on issues related to rural young people. IFAD is also a member of the UN Inter-Agency Network on Youth Development (IANYD), which has proven to be an effective body for sharing information and taking joint initiatives among UN agencies. During the last annual IANYD conference, attended by the UN Special Envoy on Youth, the discussion was anchored on preparation of the new UN Strategy on Youth, launched during the General Assembly in 2018, implementation of which IFAD will contribute to. Likewise, IFAD's participation in the annual UN ECOSOC meetings should be strengthened so as to ensure alignment with the ongoing UN reform.
101. IFAD will establish a Rural Youth Advisory Council, which will be established by leveraging the potential of partnerships with existing rural youth organizations and networks - starting with those already involved in implementation of its loan- and grant-funded programmes from all regions - and will be composed of their representatives. IFAD will work closely with the Youth Council to promote a bottom-up dialogue rooted on the ground. It will contribute to the strengthening of youth inclusion through a more structured process of consultations and strategic dialogue between IFAD and the rural youth representatives.
102. The Rural Youth Advisory Council will leverage the experience gained in IFAD with the Farmers' Forum and Indigenous People's Forum, and outside IFAD, with particular reference to the Youth Advisory Councils established by other UN Agencies (UNHCR, UN-Habitat). For example, in 2016 UNHCR formed a Global Youth Advisory Council (GYAC) that serves as a consultative group on issues relating to the protection and development of young people who are refugees or internally displaced and/or stateless persons and of their communities. Most agencies' youth policies, action plans and strategies: ensure that youth play a consultative role in institutional operations; facilitate an exchange of knowledge/information; and advise the concerned agency on principled, practical and actionable solutions to youth-specific challenges.
103. Youth will be facilitated to participate in relevant national, regional and international platforms to articulate their needs. Gender sensitivity criteria will be included for the selection of young representatives, and due regard will also be given to geographical balance, so as to ensure that the organizations genuinely represent the youth of the targeted area. One of the main objectives of the Rural Youth Advisory Council will be to facilitate a high-level dialogue between youth leaders, IFAD management and relevant staff, and to jointly identify key milestones and roadmaps that will inform IFAD policymaking bodies. IFAD will also explore models from other UN agencies where such representation is being applied and functional at a governing council level.

104. As mentioned, strategic partnerships are key to the delivery of the IFAD Rural Youth Action Plan. There are ongoing discussions as well as concrete partnerships with other UN Agencies (in addition to ILO, FAO, UNICEF and UNV), IFIs (i.e. regional banks and the World Bank), bilateral development agencies, private-sector organizations (MasterCard and Packard Foundations), youth networks (YPARD, SFYN) and international NGOs (Oxfam and Save the Children). These partnerships are essential to mobilising additional financial and technical resources. They should be developed on the basis of mutual synergies and comparative advantages, with the common objective of improving the livelihoods of rural youth. Annex 2 captures several proposals for partnerships associated with each action area.
105. The Partnership and Resource Mobilisation Division (PRM), in conjunction with SKD, has already begun taking active measures to explore additional financing from development partners through unrestricted complementary contributions (UCC) and supplementary funds. It is envisaged that these funds will complement project investments in key areas such as entrepreneurship incubator models. IFAD will also explore additional financing through foundations, the private sector and bilateral development agencies that have an established interest in rural youth. IFAD is keen to use this financing to focus on innovative instruments, tools and approaches to tackling the issues around rural youth. IFAD acknowledges the support it is receiving from its members and the Executive Board in particular in the process of mobilising resources to implement this action plan
106. An additional option will be to support youth access to the ABC Fund. This Fund offers a blend of financing to smallholder farmers in the most remote regions of the rural developing world. It will focus on young agro-entrepreneurs, who are often underserved financially. The ABC Fund will provide small investments (from US\$80,000 to US\$1 million) to small and medium-sized enterprises (SMEs) and young rural agro-entrepreneurs, to fill the “missing middle” financing gap. This innovative approach will offer a one-stop shop of products for rural agro-entrepreneurs.

### Summary of expected outputs for action area 4

| Action area  | Outcome   | Outcome indicators   | Outputs   | Output indicators   |
|--|---|--|---|---|
| <p>Action area 4:<br/>Policy engagement, partnerships, and resource mobilisation</p> <p>Manage strategic partnerships with governments, international organizations, the private sector, NGOs and other stakeholders at national, regional and global levels, to pursue policy and advocacy activities</p> | <p>Successful policy engagement and resource mobilisation with strategic partners at country, regional, and global levels</p> | <p>i) Number of forums/platforms where IFAD can contribute at country and global level to policies and decisions that are favourable for rural youth</p> <p>ii) RYAC inputs are included in IFAD's decision-making process at headquarters, hub/country level and project level in work with rural youth</p> <p>iii) Amount of resources mobilised for youth by IFAD</p> | <p>i) Country-level policy engagements</p> <p>ii) Regional/global partnership activities on decent employment and child labour</p> <p>iii) Active membership in UN-IANYD and contribution to implementation of the UN Youth Strategy</p> <p>iv) Participation in UN ECOSOC on Youth</p> <p>v) Rural Youth Advisory Council established</p> <p>vi) Campaign to support empowerment of rural youth</p> <p>vii) IFAD goodwill ambassador for rural youth named</p> <p>viii) New partnerships established</p> <p>ix) Mobilisation of resources to pilot innovative youth-specific approaches/technologies</p> | <p>i) Number of policies or national action plans adopted or updated to reflect rural youth</p> <p>ii) Number of activities on decent employment and child labour</p> <p>iii) Number of times and type of IFAD participation in UN-IANYD initiatives (e.g. conferences, blogs, webinars).</p> <p>iv) Number of times and type of IFAD participation in ECOSOC</p> <p>v) Number of RYAC meetings attended</p> <p>vi) Number of new or strengthened partnerships</p> <p>vii) Number of youth-specific innovative approaches/technologies funded through UCCs or supplementary funding</p> <p>viii) Number of young smallholders or their organizations accessing the ABC Fund</p> |

## VI. Implementation and delivery

### A. Implementation of the Rural Youth Action Plan

107. Preparatory activities will include the following work streams: (1) identification of one ongoing project for each regional division where there are opportunities to readjust, targeting sub-strategies to retrofit for youth-sensitive characteristics; (2) inventory of youth organizations, assessment of in-house thematic toolkits, and collection and prioritization of relevant good practices on youth-sensitive approaches and technologies from both within and outside IFAD, across the key themes of the RYAP; (3) preliminary assessment of capacity needs of IFAD staff and project staff on their access to and use of youth-sensitive approaches and tools, and subsequent mobilisation of a pool of service providers and consultants with the support of the Human Resources Division (HRD).
108. With support from ECG, the regional divisions (portfolio advisers, hub delivery teams) will identify and design 54 projects during IFAD11 that will be prepared and implemented with a youth focus.
109. The rapid inventory of youth organizations will assess their characteristics and maturity status, to inform the capacity development support required and partnership-building opportunities at country and regional level. To the extent possible, the emphasis will be on leveraging existing in-house thematic toolkits by updating/adjusting them to include the specificities of working with rural youth and to eventually ensure greater efficiencies and effectiveness in the design and implementation of field projects. New tools will be developed only in areas that will need additional guidelines, such as in the case of involving youth in governance structures and decision-making processes.

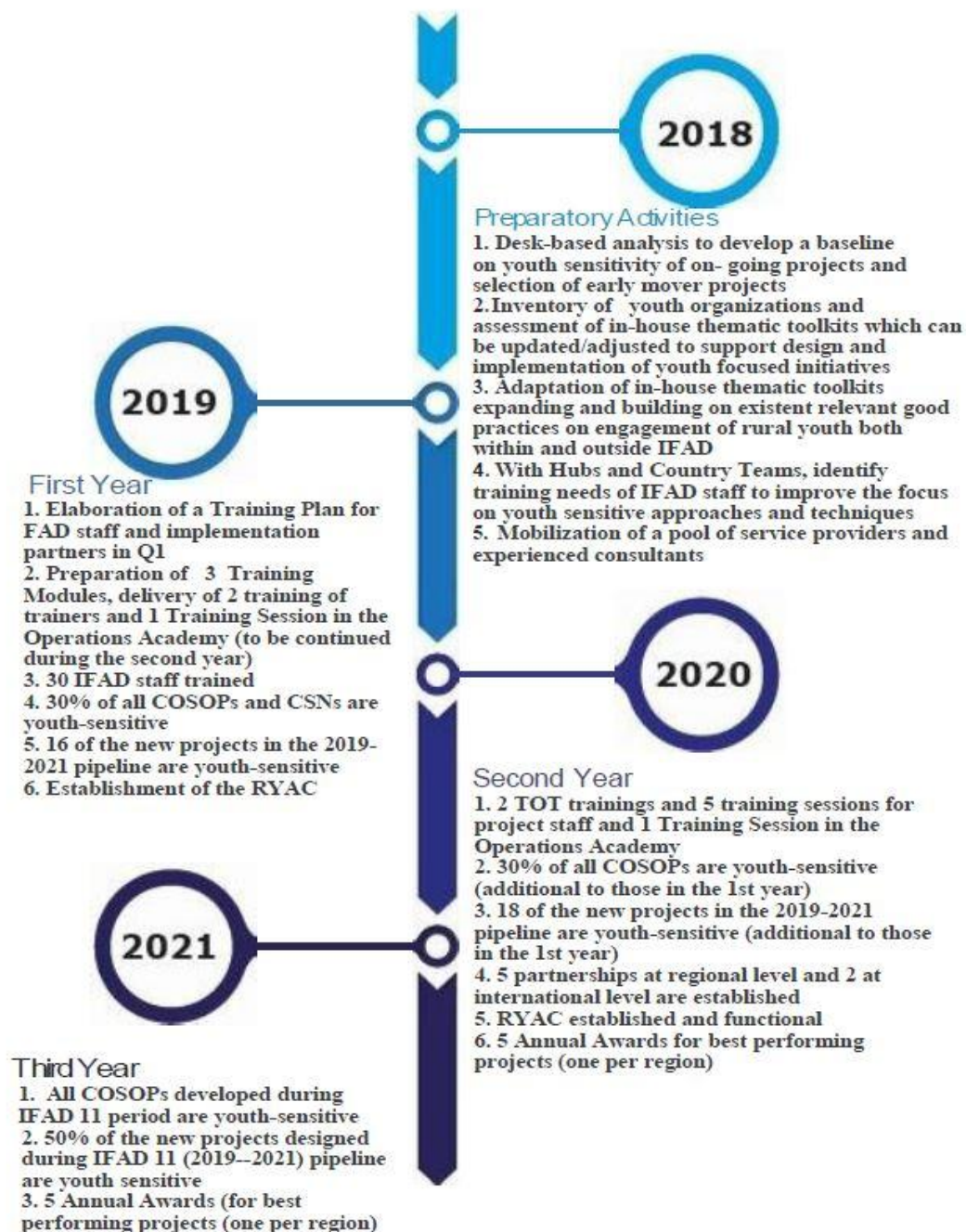
### B. Baselines

110. In view of the IFAD11 commitments to mainstreaming youth, there is a need to identify a yardstick against which to monitor to what extent IFAD is achieving the objective of making its projects really youth-sensitive. As part of the preparatory tasks for implementation of the Plan, IFAD will gather accurate information through a desk-based review of a sample of IFAD9 projects, building on work already done by the Research and Impact Assessment Division (RIA). The results of the baseline desk study will serve as the primary reference in tracking results against the objective of mainstreaming youth in 50% of design projects and 100% of COSOPs. Building on work already done under the gender and nutrition themes, the desk review will also help to define a methodology, including simple indicators to determine whether a project can be considered youth-sensitive, and thus criteria to qualify for categorization of COSOPs and projects as youth-sensitive.

### C. Delivery

111. See figure 3 below for the delivery timetable for the RYAP.

Figure 3 - Summary of key delivery milestones over the first three years of RYAP implementation





## Annexes

### Annex 1. Results Framework and Timeline of Activities (by Action Areas) for 2019-2021

Results framework by action area (Output level)

|   |   |  |
|---|---|--|
| SDGs (Agenda 2030)  | SDG 8: Promote sustained, inclusive and sustainable economic growth, full and productive employment and decent work for all, especially for young people, and improve access to financial services and benefits<br>SDG 1: End poverty in all its forms everywhere<br>SDG 2: End hunger, achieve food security and improved nutrition, and promote sustainable agriculture |  |
| Corporate Strategic Objective (IFAD Strategic Framework 2016-2025)  | SO1: Increase poor rural people's productive capacities<br>SO2: Increase poor rural people's benefits from market participation<br>SO3: Strengthen the environmental sustainability and climate resilience of poor rural people's economic activities   |  |
| Goal  | Enhance the impact of IFAD investment on the SDGs by socially and economically empowering rural young women and men   |  |
| Objective   | Mainstream youth within IFAD's operations by implementing the Plan according to the four action areas   |  |
| <b>YOUTH ACTION PLAN (2019-2021)</b>  |   |  |
| Action area 1: Youth-sensitive country programme delivery<br>Mainstream rural youth within investment projects, country strategies, and country, regional and global grants |   |  |
| Outcome   | Indicators  | Means of verification  |
| COSOPs, CSNs and loan- and grant-funded operations are systematically focused on rural youth  | <ul style="list-style-type: none"> <li>iii) Percentage of country programmes that deliver results for young people (according to RIMS indicators)</li> <li>iv) Number of investment projects that make use of youth-focused/youth-produced innovations/products originated by grant-funded projects</li> </ul>  | <ul style="list-style-type: none"> <li>• COSOP and CSN reviews</li> <li>• Project-level M&amp;E systems and ORMS</li> <li>• Minutes of PDTs and QA meetings</li> <li>• Regional and grant portfolio reviews</li> </ul> |

| Outputs  | Indicators   |  |
|--|--|--|
| (vi) 100% of COSOPs and CSNs include rural youth as one of their priority target groups<br>(vii) 50% of project design reports are youth-sensitive<br>(viii) M&E systems with age-disaggregated indicators<br>(ix) Mobilisation of resources to pilot innovative youth-specific approaches/technologies<br>(x) IFAD's targeting policy revised   | (v) Percentage of COSOPs and CSNs that include rural youth as priority target groups<br>(vi) Percentage of new loan-funded projects that are youth-sensitive<br>(vii) Number of M&E systems with age- and gender-disaggregated data (in line with the new RIMS)<br>(viii) Number of explicit references to youth in the targeting policy updated with a focus on youth   |  |
| <b>Action area 2: Strengthening implementation capacity</b><br><b>Strengthen the technical and managerial capacities of stakeholders associated with youth-focused investment projects</b>   |  |  |
| Outcome  | Indicators   | Means of verification  |
| Increased capacity of IFAD/project staff and implementing partners to successfully engage rural youth  | (ix) Number of IFAD/project staff and implementing partners applying knowledge on how to successfully engage rural youth<br>(x) Number of youth-led organizations actively engaging in knowledge-sharing with each other   |  |
| Outputs  | Indicators   |  |
| i) One capacity-building plan<br>(xi) Six training modules offered to IFAD/project staff and implementing partners<br>(xii) Jointly with the gender, nutrition and climate change themes, deliver three training modules in the Operations Academy under pillar 2<br>(xiii) Roster of certified consultants and service providers on rural youth<br>(xiv) A minimum of 50% of all youth within the target for IFAD projects participate in skills development training<br>(xv) Three learning events for youth-led organizations carried out<br>(xvi) Annual awards and event processes for best performing projects (one per region)<br>(xvii) Youth engagement guidance note | (ii) Number of modules on rural youth developed for IFAD's Operations Academy<br>(iii) Number of staff who have successfully concluded the Operations Academy training<br>(iv) Number of service providers/individual consultants mobilised (by region) and available on the roster<br>(v) Number of training events carried out<br>(vi) Percentage of youth within each IFAD project target group who have participated in skills development training activities<br>(vii) Five annual awards held (in the three-year RYAP cycle) | <ul style="list-style-type: none"> <li>• Reports from Learning Management Systems</li> <li>• Performance evaluation system reports</li> <li>• Staff surveys</li> </ul> |



| Action area 3: Evidence-based knowledge management and strategic communication   |   |   |
|--|---|---|
| Build and manage the evidence base to support better project design and implementation, and effective policy engagement  |   |   |
| Outcome  | Indicator   | Means of verification   |
| Improved generation and use of evidence-based knowledge and strategic communication around successful youth-focused development models   | i) Utility/application and accessibility of youth-focused communication and knowledge products authored by IFAD   | <ul style="list-style-type: none"> <li>• IFAD website</li> <li>• IFAD Research Series</li> <li>• Rural Solutions Portal</li> <li>• Regional implementation workshops</li> <li>• Internal and external blogs</li> </ul>          |
| Outputs  | Indicators  |   |
| (vi) An IFAD youth-specific knowledge generation and dissemination plan<br>(vii) Five IFAD-specific case studies focusing on rural youth as a contribution to the Rural Development Report 2019<br>(viii) Six youth-focused multimedia knowledge products<br>(ix) An updated communication strategy that includes a focus on mainstreaming areas, including rural youth<br>(x) A number of knowledge-sharing events around regional portfolio reviews and South-South and Triangular Cooperation | (vi) Number of studies and databases focused on rural youth<br>(vii) Number of conferences where the RDR is presented<br>(viii) Number and type of youth-focused KM multimedia products for project design, implementation and policy engagement<br>(ix) Number of downloads from IFAD Rural Youth webpage<br>(x) Number of corporate events including rural youth as a topic |   |
| Action area 4: Policy engagement, partnerships and resource mobilisation   |   |   |
| Manage strategic partnerships with governments, international organizations, the private sector, NGOs and other stakeholders at national, regional and global levels to pursue policy and advocacy activities  |   |   |
| Outcome  | Indicators  | Means of verification   |
| Successful policy engagement and resource mobilisation with strategic partners at country, regional, and global levels   | (iv) Number of policy briefs developed and used by CPMs for policy engagement purposes at country and global level to champion the rural youth agenda<br>(v) RYAC inputs are included in IFAD's decision-making at headquarters, hub/country level and project level in work with rural youth<br>(vi) Amount of resources mobilised for youth by IFAD                         | <ul style="list-style-type: none"> <li>• Project and country programme evaluations</li> <li>• Stocktaking on policy engagement</li> <li>• Partnership progress report</li> <li>• Reports on engagement with the RYAC</li> </ul> |
| Outputs  | Indicators  |   |
| (x) Country-level policy engagements<br>(xi) Regional/global partnership activities on decent employment and child labour<br>(xii) Active membership through meetings in UN-IANYD and contribution to implementation of the UN Youth Strategy  | (ix) Number of policy briefs developed<br>(x) Number of activities on decent employment and child labour<br>(xi) Number of times and type of IFAD participation in UN-IANYD initiatives (e.g. conferences, blogs and webinars)  |   |

|  |  |  |
|--|--|--|
| (xiii) Participation in meetings of UN ECOSOC on Youth<br>(xiv) Rural Youth Advisory Council established<br>(xv) Campaign to support empowerment of rural youth<br>(xvi) IFAD goodwill ambassador for rural youth named<br>(xvii) New partnerships established<br>(xviii) Mobilisation of resources to pilot innovative youth-specific approaches/technologies | (xii) Number of times and type of IFAD participation in ECOSOC<br>(xiii) Number of RYAC meetings attended<br>(xiv) Number of new or strengthened partnerships<br>(xv) Number of youth-specific innovative approaches/technologies funded through UCCs or supplementary funding<br>(xvi) Number of young smallholders or their organizations accessing the ABC Fund |  |
|--|--|--|

## Annex 2 - List of partners and their potential areas of collaboration

| Action areas  | Partners | Function   |
|---|----------|--|
| Action area 1: Youth-sensitive country programme delivery | FAO      | Policy and technical support on child labour and decent work   |
|   | ILO      | Policy and technical support on decent employment for youth  |
|   | SDSN     | Network supporting youth addressing climate issues   |
|   | Oxfam    | Currently implementing an IFAD-funded grant with a focus on youth and remittances: Diaspora support to youth in Morocco and Senegal  |
|   | STC      | Technical support for targeting of adolescents and youth   |
|   | Procasur | Facilitation on consultative youth participation in project cycles   |
|   | SF/SFYN  | Technical support for youth and food systems. Currently implementing an IFAD-funded grant on socio-economic empowerment of indigenous youth aligned with IFAD projects                             |
|   | YPARD    | In-country network supporting a range of youth-related issues  |
| Action area 2: Strengthening implementation on capacity   | FAO      | Capacity-building through the <b>Decent Rural Employment?</b> toolbox via workshops and e-learning courses on productive employment and decent work in rural areas and child labour in agriculture |
|   | ILO      | Technical capacity-building on exercise in decent employment for youth through the International Training Centre (ITC) and in-country capacity support   |

|   |                        |  |
|---|------------------------|--|
|   | MasterCard Foundation  | Potential collaboration through the concept of professional pathways to foster youth leadership by recruiting recent graduates of global tertiary scholarship programmes for constructive and challenging three-year professional positions in IFAD country offices. |
|   | OECD                   | Youth inclusion project provides capacity-building with in-country ministerial-level staff   |
|   | STC                    | Training and supporting youth at scale via the “life skills for success” methodology, targeting youth transition to adulthood and the application of life skills in daily life.  |
|   | SFYN                   | Currently implementing an IFAD-funded grant with Slow Food to build capacities for the social and economic empowerment of indigenous youth through the indigenous network. In addition, there is scope for scaling up such interventions.                            |
|   | Procasur               | Collaboration and technical assistance in building capacity using Procasur’s flagship model of learning routes   |
|   |                        |  |
| Action area 3:<br>Evidence-based<br>knowledge<br>management<br>and strategic<br>communication | FAO                    | FAO’s extensive knowledge network offers ample evidence-based KM products on decent employment. In addition, through the FAOSTAT data portal, which also includes age-disaggregated data.  |
|   | ILO                    | Through an IFAD-funded grant, ILO has created a youth M&E guide for impact evaluation, along with a number of publications, in particular for the North African countries. In addition, ILO also collects data on the school-to-work transition                      |
|   | OECD                   | OECD hosts a repository of accessible NEET data. In addition, it produces a report called Investing in Youth that reviews youth employment policies  |
|   | MDP Global Association | Currently implementing an IFAD-funded grant linking Master’s students in development with IFAD loans, for knowledge generation.  |
|   | STC                    | “Quality benchmark” evaluations on project design for adolescents are conducted by STC, based on internationally agreed standards such as those of Sphere, INEE and Child Protection in Emergencies, which could serve as sources of data for project design.        |
|   | Procasur               | Procasur has a number of publications and best practices on youth engagement; also through the learning routes model.  |
|   |                        |  |
| Action area 4:<br>Policy<br>engagement,<br>partnerships<br>and resource<br>mobilisation       | UN-IANYD               | ECOSOC Youth Forum and joint advocacy with other UN agencies through the network   |
|   | FAO                    | Joint advocacy on child labour and decent rural employment   |
|   | ILO                    | Joint advocacy through the “Global Initiative on Decent Jobs for Youth”  |
|   | ADB                    | Potential engagement through the Asia Youth Forum hosted each year by ADB  |
|   | OECD                   | OECD policy toolkit to support governments in developing countries to analyse youth-specific issues  |
|   | Oxfam                  | Collaboration through social media and the Active Youth Citizens initiative. In addition, Oxfam is currently collaborating with IFAD on nutrition and adolescent girls.  |

|  |          |   |
|--|----------|---|
|  | Procasur | A recent IFAD-funded grant with Procasur in LAC operates a platform for policy dialogue among young entrepreneurs.  |
|  | STC      | Collaboration with "Sottosopra" is an educational project that aims to create a pool of adolescents active throughout the country, to promote the "voice of the youth". |
|  | SF/SFYN  | A currently ongoing grant to ensure indigenous youth economic and social empowerment through the Terra Madre network for policy engagement and advocacy                 |
|  | Nestlé   | Potential collaboration with the Global Youth Initiative for youth employment and agripreneurship   |
|  | YPARD    | Joint campaign and advocacy around rural youth through social media and other online platforms  |

## Annex 3. Glossary of terms

### Key terms and definitions

**Definitions of youth:** The definitions of youth change with circumstances, especially with changes in demographic, financial, economic and socio-cultural settings. Youth is best understood as a period of transition from the dependence of childhood to the independence of adulthood. The General Assembly first defined youth in 1985 for the International Youth Year as those persons between 15 and 24 years of age, without prejudice to other definitions by Member States. However, several UN entities have somewhat different definitions of youth, which is recognized by the United Nations Secretariat. The African Union defines youth to refer to all persons between the ages of 15 and 35.

Implementation of the World Programme of Action for Youth to the Year 2000 and Beyond, General Assembly Report A/56/180  
UNDESA – Definition of Youth

**Adolescence:** Adolescence is difficult to define in precise terms. Although there is no internationally accepted definition, the United Nations defines adolescents as individuals aged 10 to 19 – in effect, those in the second decade of their lives.

UNICEF – The state of the world's children: Adolescence – An age of opportunity, 2011

**Youth participation:** Through active participation, young people are empowered to play a vital role in their own development, as well as in that of their communities, helping them to learn vital life skills and develop knowledge on human rights and citizenship and promoting positive civic action. To participate effectively, young people must be given the proper tools – such as information and education about and access to their civil rights.

Youth Participation Factsheet, UN-Habitat and UN DESA

**Decent rural employment:** Decent rural employment refers to any activity, occupation, work, business or service performed in rural areas for pay or profit by women and men, adults and youth, that: respects the core labour standards as defined in ILO Conventions; entails an adequate degree of employment security and stability; avoids excessive working hours and allows for sufficient time for rest; adopts sector-specific minimum occupational safety and health measures; and promotes access to adapted technical and vocational training.

FAO – Understanding Decent Rural Employment

**Child labour:** Work for which a child is too young, as defined by national legislation and international standards, and/or that is likely to harm their physical and mental development, deprives them of schooling and the opportunity to learn, requires them to leave school early, or obliges them to combine education with long and heavy work. It should be emphasized that not all work carried out by children is considered child labour.

ILO Minimum Age Convention, 1973 (No. 138)

**Forced and early/child marriage:** Child marriage, defined as a formal marriage or informal union before age 18, is a reality for both boys and girls, although girls are

disproportionately affected. Child marriage is a human rights violation and can lead to a lifetime of disadvantage and deprivation.

UNFPA-UNICEF Global Programme to Accelerate Action to End Child Marriage, 2017

Not in education, employment or training (NEET): NEET corresponds to the number of young persons not in education, employment or training as a percentage of the total youth population. It provides a measure of those youth who are outside the educational system, not in training and not in employment, and thus serves as a broader measure of potential youth labour market entrants, since it also includes young persons outside the labour force who are not in education or training.

---