

Document: EB 2010/101/R.40  
Agenda: 17(a)(i)  
Date: 9 November 2010  
Distribution: Public  
Original: English

**A**



تمكين السكان الريفيين الفقراء  
من التغلب على الفقر

: _____ : _____	: _____ : _____
<b>Liam F. Chicca</b>	<b>Bambis Constantinides</b>
+39 06 5459 2462 : <a href="mailto:l.chicca@ifad.org">l.chicca@ifad.org</a> :	+39 06 5459 2054 : <a href="mailto:c.constantinides@ifad.org">c.constantinides@ifad.org</a> :

.43

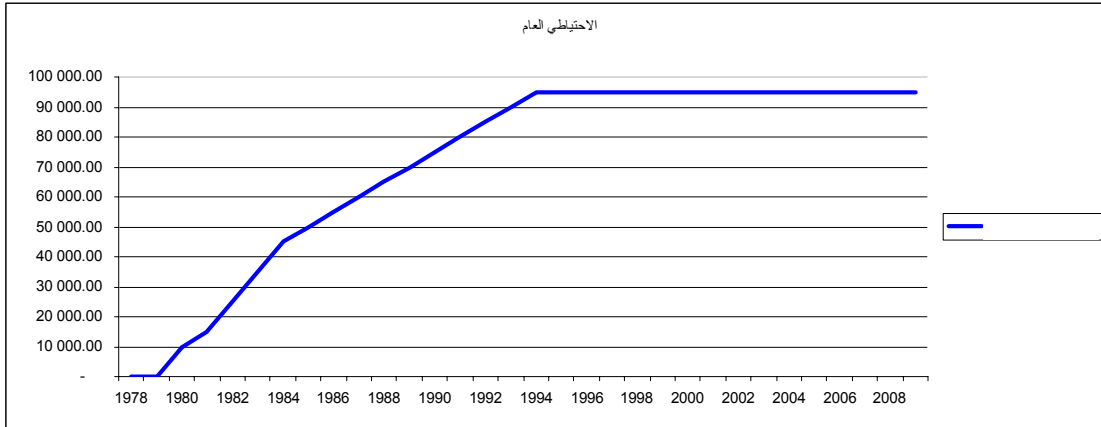
1980<sup>1</sup> -1  
:  
•  
•  
•  
2 1999 -2  
100 -3  
1999  
95 1994 1980  
1

---

<sup>1</sup> قرار مجلس المحافظين 4-د/16.  
<sup>2</sup> الوثيقة GC 22/L.9

1

( )



3

-4

.2006 /

-5

2009

2010

.2010 /

-6

/

-7

" : 7 ( ) 2 .

...

".

<sup>3</sup> انظر اختصاصات لجنة مراجعة الحسابات التابعة للمجلس التنفيذي ونظامها الداخلي التي اعتمدت في سبتمبر/أيلول 2009 (EB 2009/97/R.50/Rev.1).

4

/ 31

)  
(2009

-

)

(

2

-9

2.8

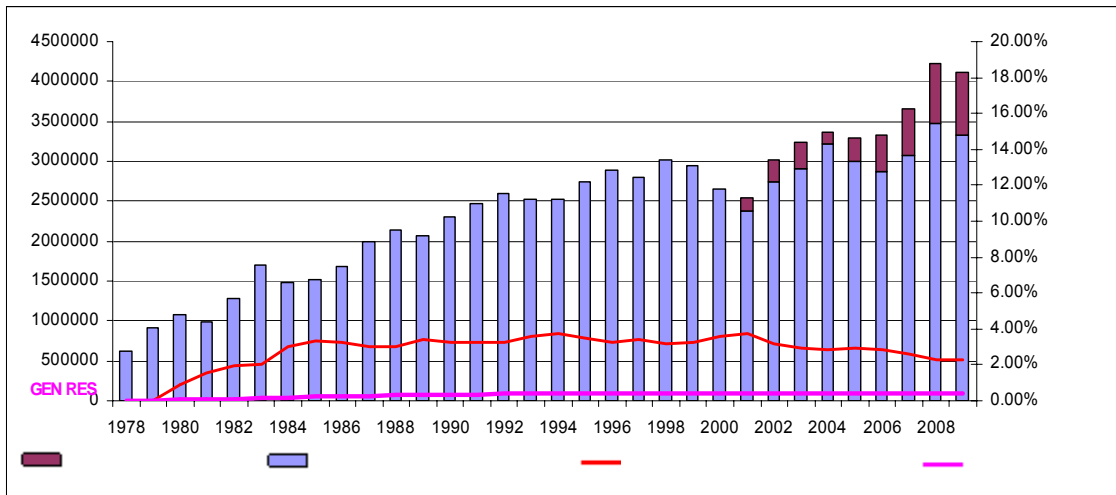
3.7 (2009

2.3)

.(2009

2.7)

2



) 1980 -11  
(  
)

( ) (

:  
•  
•  
•

-12

/

:

2006 /

•  
•

2009 2008

2009 •

.2010 /

.2012

-

-13

2009 / 31 .  
 ( )  
 ( 7.9)  
 ( 3.47)  
 ( )

-14

( )

**1**

---

( )	( )	( )	/	31
3.50 -	(7.80)	3.50 -	1.257	2001
0.50 -	(12.10)	8.18	1.360	2002
0.06	1.60	9.34	1.486	2003
0.06	1.70	4.26	1.550	2004
0.87	24.20	7.97-	1.426	2005
1.23 -	(36.50)	5.44	1.504	2006
0.89 -	(28.70)	4.79	1.576	2007
0.52	16.80	2.61-	1.535	2008
0.53 -	(18.50)	1.89	1.564	2009

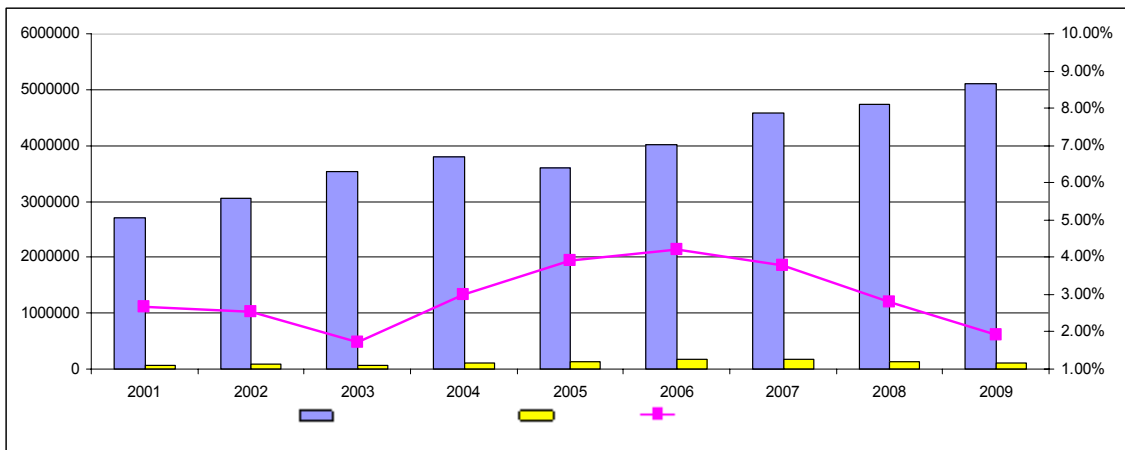
---

-15

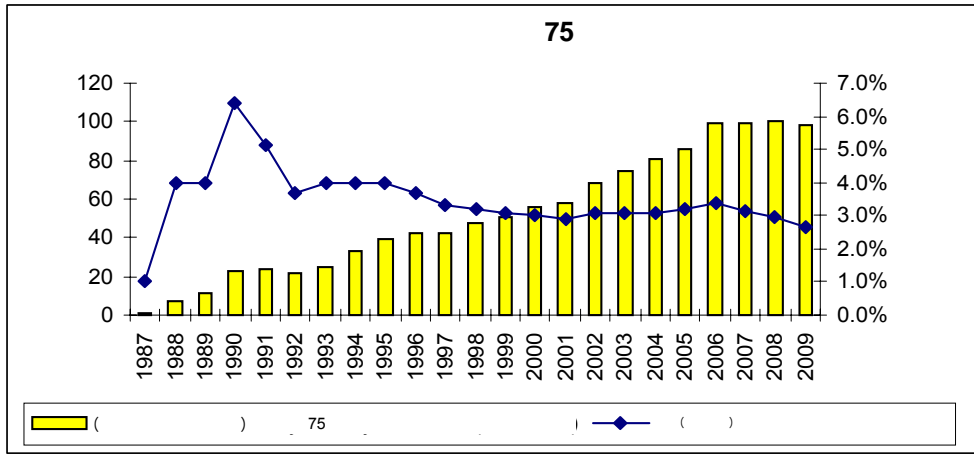
) -16  
 41 (2009/12/31  
 .( 7)

24 -18  
 48  
 2009 / 31  
 1.9 98.4  
 .( 5 101.4)

3 -19  
 ( )  
 3  
 ( )



2006 4 -20  
 .2006 4 -21  
 75 4  
 75 150  
 75 4



97.7 2009 / -22  
 2.7  
 3  
 .1995  
 0.12  
 .2009/2008

.( )  
 10 ( 2.7 ) 3  
 .( 10 )



Aa3 (Standard and Poor's) AA- (Moody's) -25

-26

(Moody's) P1 (Standard and Poor's) A1

2

(Moody's)			
2006	2007	2008	2009
P1	P1	P1	P1
Aa1	Aaa	Aaa	Aaa
Aaa	Aaa	Aaa	Aa1
Aa1	Aaa	Aaa	Aaa
Aaa	Aaa	Aaa	Aaa

/ 31

-27

-28

2005

2009

2010

95

-29

2009

/ 31

32.1

1.23

32.1

5

-30

3

( )	( )	( )	( )		
33 987	1.31	32 080	1.23	2009/12/31	
39 533	1.31	33 245	1.46	2008/12/31	
35 000	1.4	32 500	1.3	2007/12/31	
32 300	1.4	18 000	0.8	2006/12/31	
33 950	1.4	27 470	1.2	2005/12/31	
41 800	1.7	37 000	1.5	2004/12/31	
45 300	2.0	39 600	1.7	2003/12/31	
50 300	2.4	38 100	1.8	2002/12/31	
(2007-2006)	1.3			2005	:

413 501 000

(CVaR)

-31

(CVaR)

(VaR)

"

(VaR)

(CVaR)

"

(VaR)

2006

(2008 )

-32

.2010

—  
-33

.( )

" "

-34

:

•

•

•

—  
-35

)

(

-36

:

41 •

).( )

/

.(

. 32.1 •  
( )

) .( )  
. ( 5

.( )  
10

. 10 •  
)

.(

-37

( ) -

-38

":

."

( )

-39

.2006

-40

1980

.1993 1980

2006

/

-41

-42

:

•

•

•

•

-43

)

(

95

:

•

•

•

-44

/

2011

2012

( ) 2008 2009 / 31

2008	2009	
263 619	284 508	
2 813 473	2 591 010	
275 328	386 512	
<sup>1</sup> 126 632	67 211	1
<b>3 479 052</b>	<b>3 329 241</b>	
816 387	461 345	
3 436	7 150	
95 000	95 000	
2 266 063	2 405 277	
249 789	161 268	
149 239	305 795	
<b>3 579 914</b>	<b>3 435 835</b>	
80 898	80 861	
<b>3 660 811</b>	<b>3 516 696</b>	
<b>(181 759)</b>	<b>(187 455)</b>	
400 086	405 911	
160 533	195 732	
<b>(742 378)</b>	<b>(789 098)</b>	
585 352	742 378	/ 1
168 300	90 000	
<b>753 652</b>	<b>832 378</b>	
<b>(11 274)</b>	<b>(43 280)</b>	
<sup>2</sup> 742 378	789 098	31
-	-	/
-	-	1

)

( 1 380