



REPUBLIC OF TÜRKIYE

***Country strategic
opportunities programme***

2025-2030

**Naoufel Telahigue
NEN Regional Director**

***Executive Board Consultations
28 April 2025***

Table of contents



- 1 Country Context
- 2 Challenges and Opportunities
- 3 Strategic Objectives
- 4 COSOP (2025-2030) UMIC Tailored Approach
- 5 Planned Investments and Financing Sources
- 6 Transitional Readiness Assessment Framework: Process & Indicators
- 7 Conclusions and Way Forward

Country context and IFAD-Supported Interventions

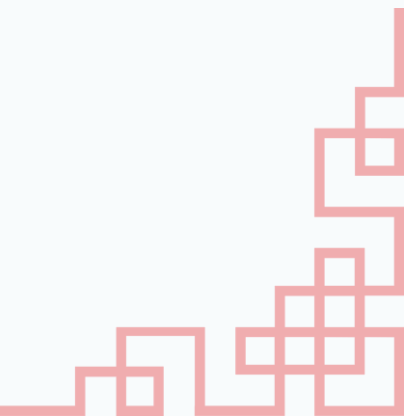
Türkiye is a UMIC – above the GDI threshold for over 3 consecutive years

Rural poverty and geographical inequalities remain entrenched particularly in uplands, central, and eastern regions

12 IFAD-financed projects (1.5 million households reached) since 1982 – **3 ongoing plus 1 in pipeline**

**Looking ahead:
Opportunities for resilient growth:**

Continued investments in infrastructure, digital connectivity, and the green economy (renewable energy, climate-smart agriculture) offer significant potential to drive long-term, sustainable growth and reduce regional disparities



Challenges and opportunities



Challenges

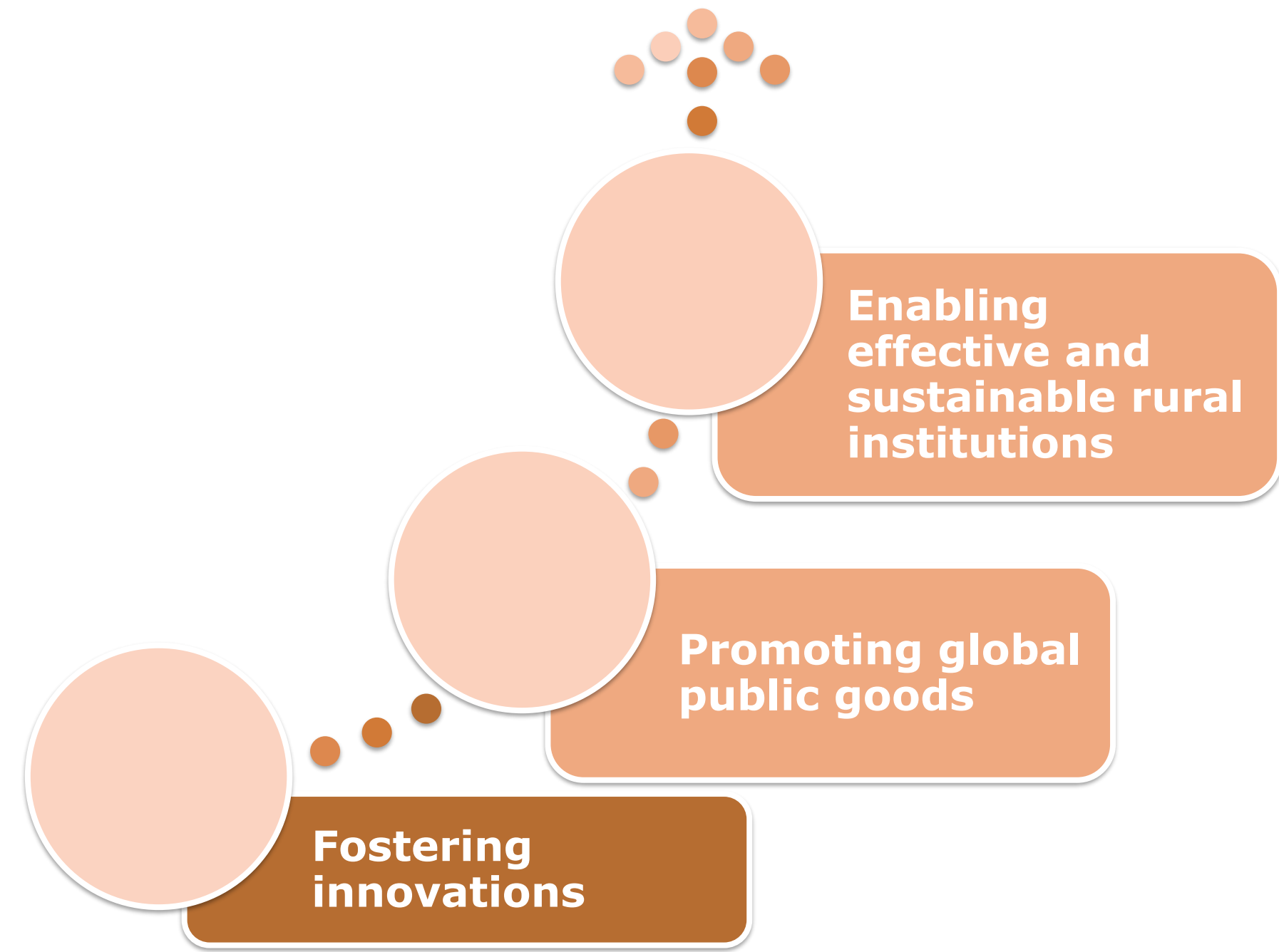
- Growing exposure to **climate-related risks and natural disasters**
- **Natural resources and ecosystems are undergoing increasing stress**
- **Uplands and forest villages** face ageing population, low productivity growth, and lack of diversified economic opportunities

Opportunities

- Türkiye has embarked on a national pathway for the **transformation of its food systems**
- **Investment in both on and off-farm income**, employment and enterprise development opportunities
- Support Türkiye's ambition to expand knowledge sharing and trade opportunities in Central Asia and the African continent, through **non-lending agenda (SSTC)**

Strategic Objectives: IFAD UMIC Tailored approach

- 1** Strengthen the governance of natural resources and eco-systems for more efficient, resilient, and sustainable management
- 2** Foster sustainable agri-food systems
- 3** Diversify economic opportunities that contribute to socio-economic development and empowerment of women and youth in rural areas, ensuring inclusion of those left behind



COSOP (2025-2030) UMIC-Tailored approach

COSOP 2016-2021 (Extended until 2024)

✓ Focus on:

- Enhancing market access for productive, poor smallholder farmers
- Mainstreaming sustainable natural resource management into all aspects of upland agricultural production and increasing resilience to climate adversities

✓ Main instruments:

- Sovereign loans
- Country grants

COSOP 2025-2030

✓ Addressing CSPE recommendations, focus on:

- 🌻 Resilient Ecosystems and Rural Transformation
- 🌻 Strengthened rural institutions to manage natural resources
- 🌻 Sustainable agrifood systems
- 🌻 Innovative practices and technologies
- 🌻 Inclusive economic opportunities with private sector engagement
- 🌻 Enhanced KM and M&E functions for better policy work and scaling

✓ Main instruments:

- Sovereign loans / Climate funds / Policy engagement and SSTC

Global-Regional Public Goods: Biodiversity conservation / Climate adaptation/mitigation / Geographical Indications)

Financing sources and other instruments



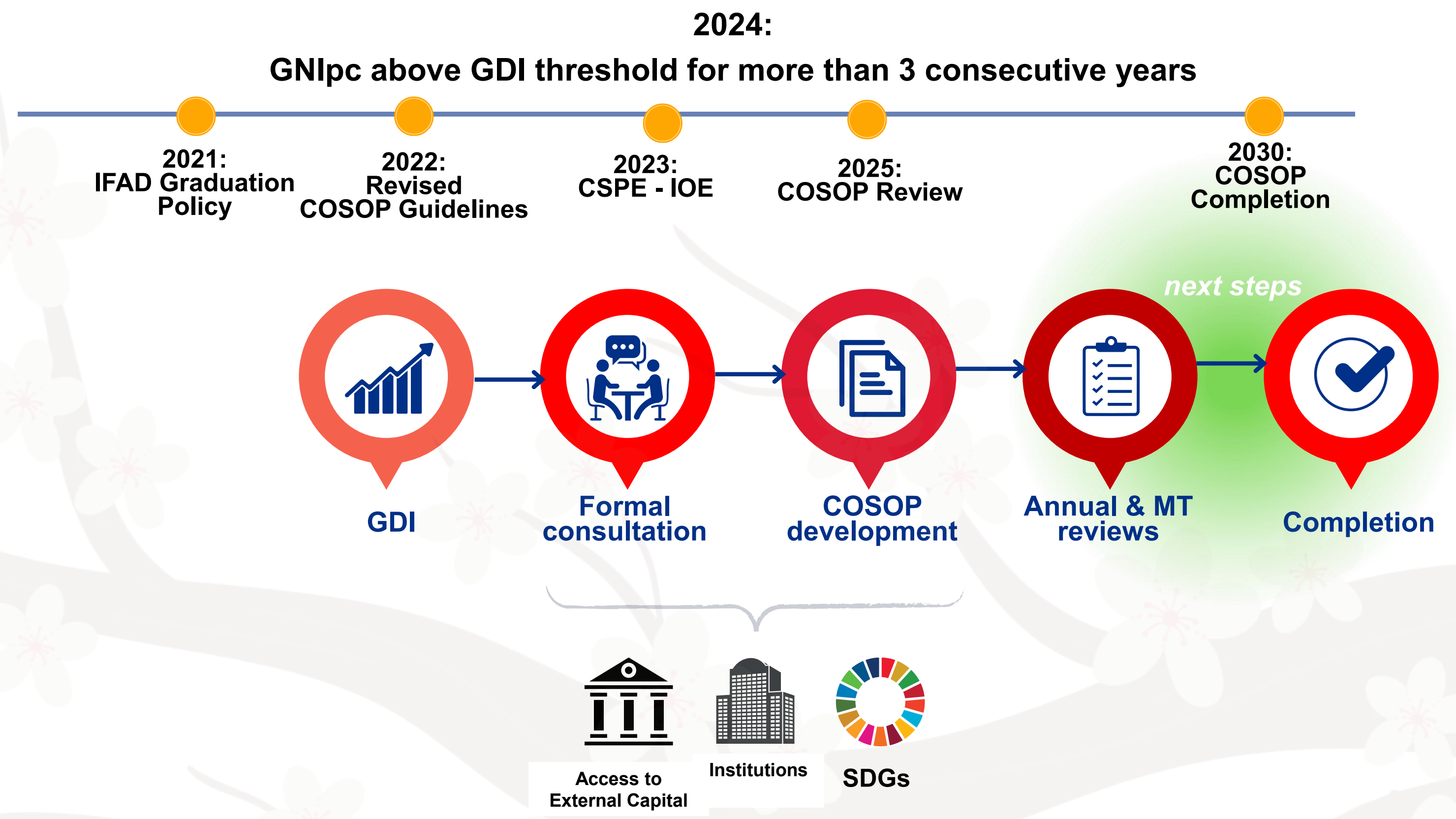
Financing sources from IFAD12-14 cycles

- IFAD12: US\$65 million (BRAM)
- IFAD13: US\$ 20 million (BRAM)
- IFAD14: Amounts TBC

Other instruments

- SSTC
- Climate Funds

Transitional Readiness Assessment: Process



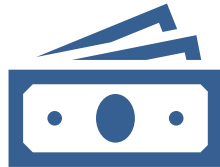
Transition Criteria	Indicator	Past COSOP	Baseline	Mid-term	Completion
		2016	2024	2027	2030
End Poverty	Poverty headcount ratio at US\$ 6.85 a day (2017 PPP) (2023) (%)	10.3	7.8	6.60	4.99
	At risk of poverty or social exclusion (%)	33.2	29.3	27.56	25.23
End Hunger	2.c.1 Indicator of Food Price Anomalies (IFPA), by Food CPI	(1.12)	1.05	0.52	0.18
	Obesity rates (%) individuals aged 15+	19.6	20	18.8	17.6
Achieve Gender Equality	Percentage of women employed in agriculture (%)	28.50	18.70	16.69	14
	Ratio of female-to-male labour force participation rate (%)	45.1	49.9	55.4	62.7
Reduced Inequality	Gini coefficient	0.404	0.413	0.405	0.404
	Income Share of bottom 40% (%)	16.78	16.61	16.97	16.78
Access to International Capital Markets	Credit rating agency				
	S&P	BB-	BB-	BB-	BB+
	Fitch	BB-	BB-	BB-	BB+
Institutions/Policies for sustainable rural development	RSPA	<u>IFAD12</u>	<u>IFAD13</u>		
Rural Sector Performance Assessment	Overall RSPA Rating	3.7	4.1	4.4	4.9
	Policies/Frameworks (1.1)	4.3	4.6	4.8	5.2
	Climate change policies (3.2.)	3.7	4	4.2	4.6
	Access/Use rural financial services (4.1)	2.5	2.9	3.2	3.7
<u>Memo Item</u>			(2023)		
GNI per capita (Atlas method in current USD)		11,340	11,730	13,208	14,785

Transitional Readiness Assessment Framework: Indicators & Targets

Conclusions and way forward



Actively seek and establish new partnerships



Pursue private sector engagement



Engage in policy dialogue on key areas: Watershed micro-catchment planning; empowerment of youth and women Farmers' Organizations; inclusive contract farming



Strengthen SSTC



Monitor process through periodic assessment of targets/projections validity (Annual, Mid-term and Completion COSOP Reviews)



Thank you