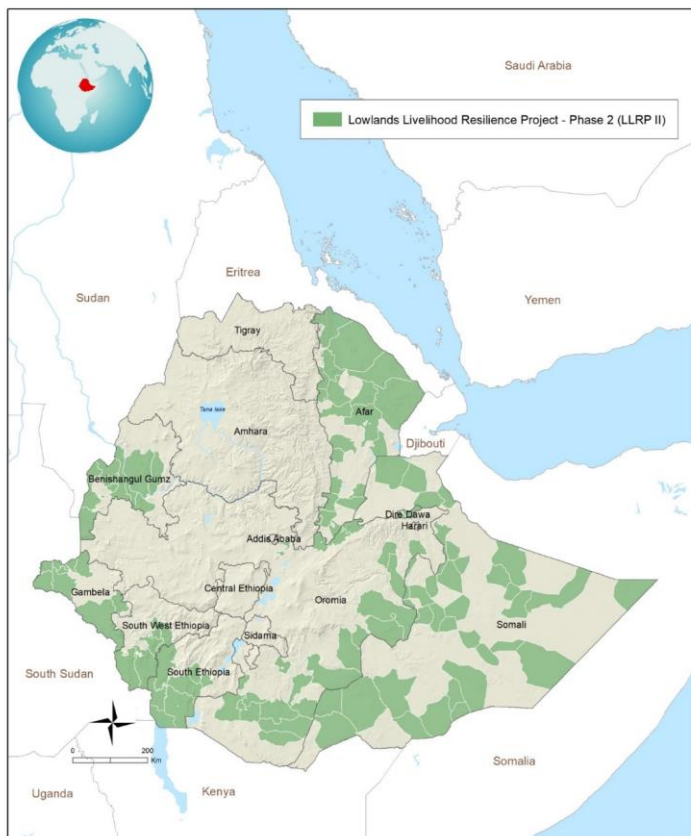




Lowland Livelihoods Resilience Project – Phase II (LLRP II), Ethiopia

Executive Board Consultation, 28 April 2025

LLRP II AT A GLANCE



The designations employed and the presentation of the material in this map do not imply the expression of any opinion whatsoever on the part of IFAD concerning the delimitation of the frontiers or boundaries, or the authorities thereof.
IFAD Map compiled by IFAD | 21-10-2024

Duration	4 years
Project Area	120 lowland woredas, seven regions & Dire Dawa Administration; total of 1 million ha
Financing	Total Costs: US\$ 424 million <ul style="list-style-type: none"> • IDA (World Bank): US\$ 340 million • IFAD: US\$ 80 million (US\$ 69.243 million & financing gap: US\$ 10.76 million) • Private Sector contribution: US\$ 4 million
Co-financing Ratio	International: 4.25 Domestic: 0.05
Implementing Agency	Ministry of Irrigation and Lowlands
Beneficiaries	3 million HH direct beneficiaries and an additional 2 million HH indirectly

PROJECT RATIONALE

Problem Context

- Climate vulnerability and degraded ecosystems
- High poverty, food insecurity, and limited livelihood options
- Weak market access and limited private sector engagement
- Limited participation of women and youth

Project Logic

- Build resilience through climate-smart agriculture, rangeland restoration, and early warning systems.
- Diversify livelihoods, promote climate-resilient agri-systems, and expand finance for vulnerable groups
- Strengthen value chains, leverage domestic private sector financing, and promote productive partnerships
- Apply women's empowerment and youth-sensitive approaches



PROJECT COMPONENTS

COMPONENT 1: Pastoral Risk Management for Resilience

- Early warning systems, disaster preparedness, climate information

- **480,000 HHs** with access to early warning and climate information services

COMPONENT 2: Integrated Rangeland Management

- Capacity building for participatory rangeland and pasture monitoring and management, mitigation of resource-related conflicts.

- **1.03 million** hectares of land under improved rangeland management and climate-resilient practices

COMPONENT 3: Climate Resilient and Sustainable Livelihoods

- Climate-smart and nutrition sensitive crop and animal productivity enhancements; commercialization and livelihood diversification enterprise development; promoting women's empowerment

200,000 HHs adopting climate-resilient technologies

COMPONENT 4: Project Management, M&E, Policy Support

- Project coordination, data systems, reporting, knowledge sharing
- 90% of project-related feedback (GRM) addressed, reaching 540,000 households



SPECIAL FEATURES

Mainstreaming Themes	Leveraging Lessons for Impact	Strategic Partnerships and Policy Alignment
<p>IFAD climate finance of US\$17.5 million</p>	<p>Balancing strategic investments with community level priorities</p>	<ul style="list-style-type: none"> • Strategic alignment with Ethiopia's 2030 Development Plan, CRGE, NDCs, and IFAD13 priorities
<p>Women's empowerment: empowering women through inclusive, equitable access and participation. 50% of direct beneficiaries being women</p>	<p>Community-Based Pastoral Early Warning Systems</p> <p>Important for community interest groups (CIGs) to develop into micro and small-scale enterprises for sustainability.</p>	<ul style="list-style-type: none"> • Contributes to SDGs 1, 2, 5, and 13 • Alignment with UNSDCF 2020 - 2025
<p>30% youth target, supported with skills, finance, and enterprise opportunities.</p>	<p>Financial intermediation is essential for livelihood interventions in the lowlands.</p>	<ul style="list-style-type: none"> • Enhances donor coordination through the co-financing arrangement with the WB

THANK YOU

