

IFAD
Corporate Induction &
Senior Management
Meet-and-Greet

Impact
For
Rural
Development

*Environment, Climate Change,
Gender and Social Inclusion
(ECG) Division*
Tuesday, 11 February 2025



The Upper Tana Catchment Natural Resource Management Project, Kenya



THE PROJECT IN A NUTSHELL

Targeting

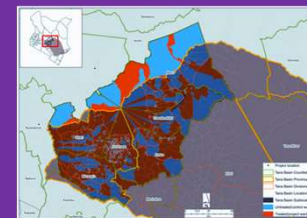
- ✓ **Local small-scale producers** with a special focus on women and youth.

Implementation Strategy

- ✓ **Community Empowerment:** Training & sensitization of staff, school programmes.
- ✓ **Sustainable Rural Livelihoods:** On-farm trials and demonstrations, soil fertility enhancement, seed multiplication and distribution, matching grants.
- ✓ **Sustainable Water and Natural Resource Management:** Training on water management and irrigation technologies, rehabilitation of degraded forest reserves.



The Upper Tana Catchment
Natural Resource
Management Project,
Kenya



GOAL

increase sustainable food production and income for poor rural households living in the Upper Tana River catchment.

TIMEFRAME

2012-2022



BUDGET

US\$ 68.8 million: IFAD (48%), Govt of Kenya (16%), Spanish Trust Fund (25%), beneficiaries (11%) (plus an additional US\$ 13.6m from IFAD through a 30-month extension)



REACH

218,629 poor rural households;
Households surveyed for the Impact Assessment: 1,608



CLIMATE ADAPTATION THROUGH NATURE AND BIODIVERSITY



Addressing deforestation while improving energy access

Renewable energy: renewable energy alternatives (solar use and biodigesters) to reduce use of firewood/deforestation



Integrated watershed approach restoring ecosystem

Rehabilitation of water sources and water harvesting



Climate-resilient agricultural packages

Adoption of agro-ecological practices



Agribusiness specialist support

Market linkages and access to incomes, reducing climate vulnerability along value chain actors.

FROM AN IDEA TO AN INDEPENDENT TRUST FUND

INNOVATIVE ORGANIZATIONAL MODEL

- ✓ Managed initially by The Nature Conservancy
- ✓ Public-Private-People- Partnership
- ✓ Charitable PP trust incorporated
- ✓ A priority for Kenya government
- ✓ 2016 GEF phase 6 awardee

RETURN ON INVESTMENTS

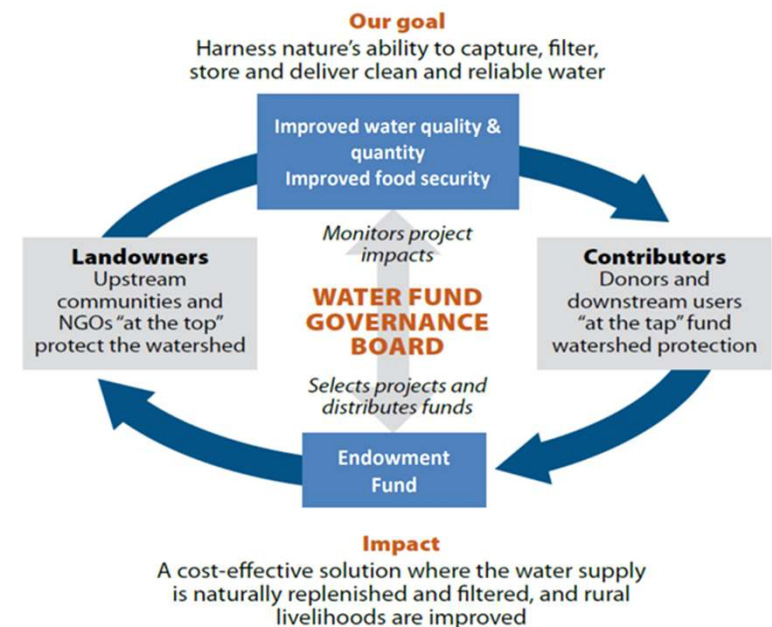
- ✓ 10-year business case
- ✓ 2:1 Return on investment
- ✓ Land Degradation Surveillance Framework & river gauging stations for decision-making/reporting.

FINANCIAL SUSTAINABILITY

- ✓ Endowment fund growing
- ✓ Match and financial leverage (5 million/1 million seed from GEF)

WATER FUND

A sustainable Payment for Ecosystems Service (PES) from downstream users for farmers to engage in land restoration and agroforestry water filtration



RESULTS

KEY OUTPUTS



Close to **1 million trees planted**, including **7,450 ha of agroforestry**, **2,500 ha of forests rehabilitated** and **236 km of riparian land conserved**



Over **4,500 hectares brought under climate-resilient practices** (184% above target)



Approximately **273,000 households involved in climate risk management**, natural resource management or disaster risk reduction activities

SOCIAL BENEFITS



- ✓ **28,000 households with safe water**
- ✓ **60 per cent** reduction in wood fuel use and **50 per cent** reduction in cooking times through solar panels and biodigesters
- ✓ A **50 per cent increase** on average in crop productivity achieved



Environment and Climate Benefits

- ✓ **42 million L/day more water** for Nairobi and 15 per cent increase in annual water yield in micro-watersheds
- ✓ **5.8 Mtons CO2eq sequestered**
- ✓ **97 per cent reduction** in human-wildlife conflict achieved



The Upper Tana Catchment Natural Resource Management Project, Kenya



Thank You

Contact

Jahan Chowdhury

Lead Technical Specialist and Cluster Coordinator
Environment, Climate, Gender, and Social Inclusion (ECG)
IFAD
j.choudhury@ifad.org