



Introduction to IFAD Operations and the Programme Management Department

Donal Brown

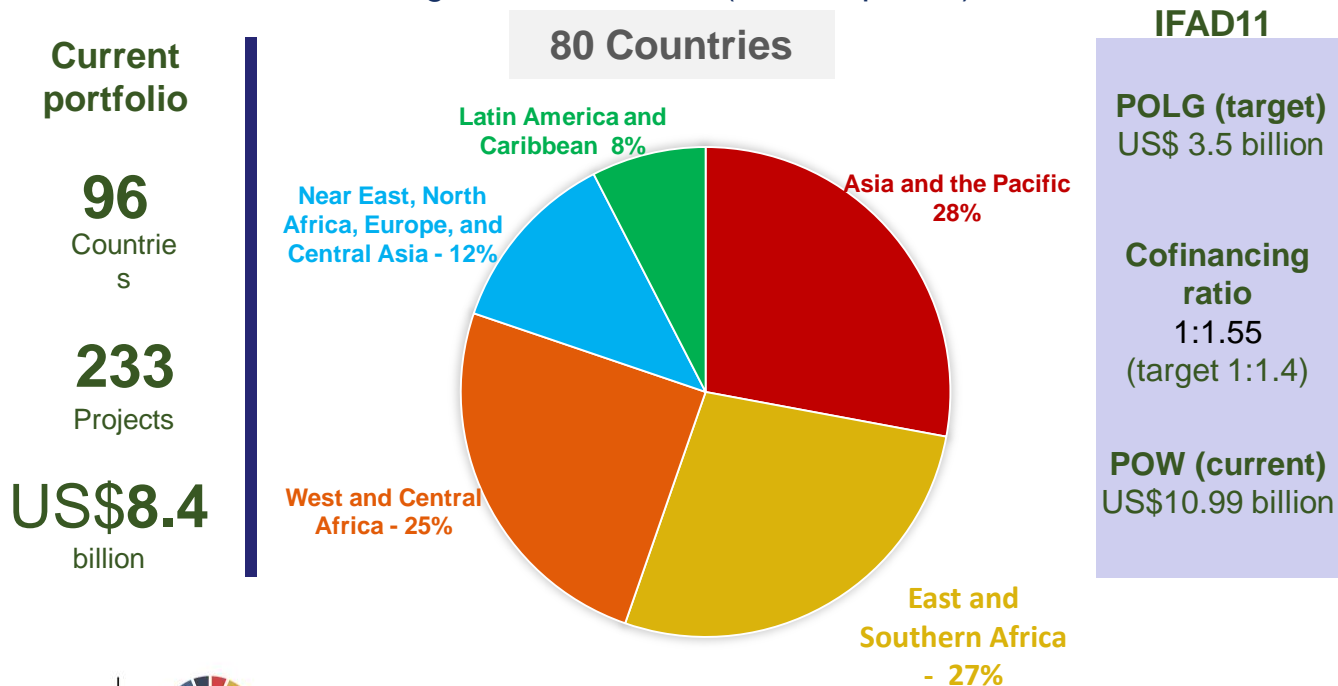
Associate Vice-President PMD

11 January 2022



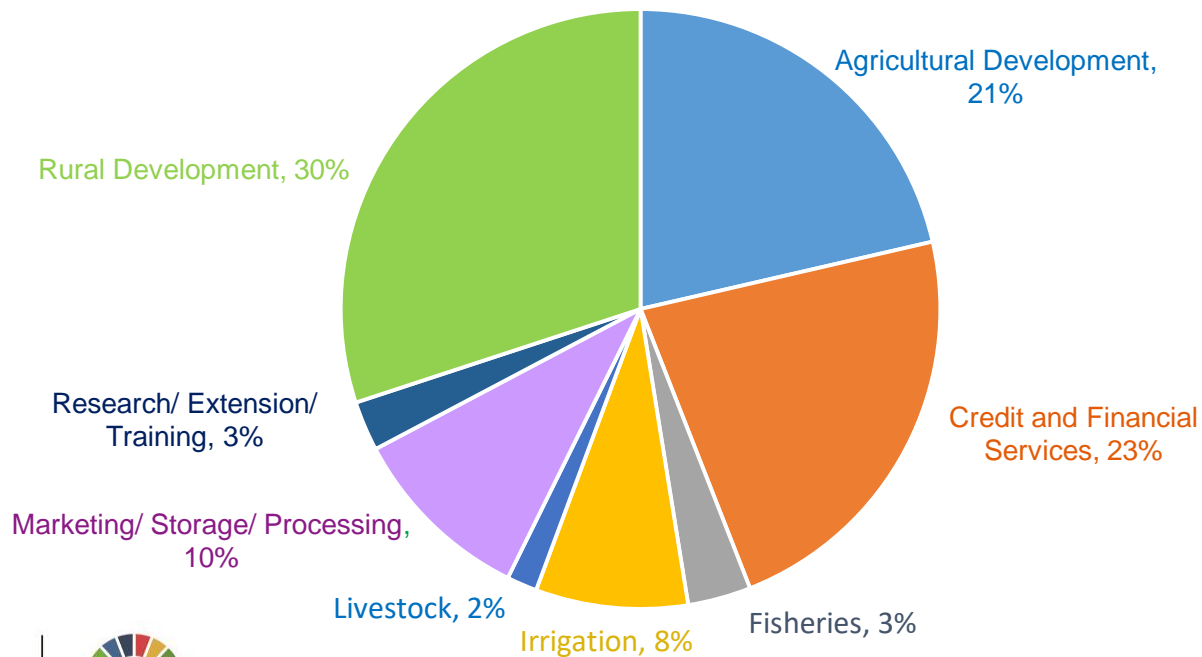
IFAD's programme of work growing, with an increasing focus on the poorest countries

Allocation of IFAD's resources by region in 2019-2021 (IFAD11 period)



What investment projects do

Current portfolio by sector – IFAD financing



SDG 2: IFAD's primary mandate



Target 2.1 – End hunger, and ensure access to safe, nutritious food



1.75 million Household members provided with targeted support to improve their nutrition

Target 2.3 – Double productivity and incomes of smallholder farmers



23.3 million Persons accessing various financial services

2.3 million Persons in rural areas trained in financial literacy and /or use of financial products and services



1.5 million Supported rural producers that are members of a rural producers' organizations

2.2 million Persons trained in Crops

898K Persons trained in Livestock

105K Persons trained in Fishery

1.5K Persons trained in Forestry

560 500 Hectares of farmland under water-related infrastructure constructed/rehabilitated

Target 2.4 – Ensure sustainable food systems and resilient agricultural practices



8 100 Groups supported sustainably manage natural resources and climate-related risks

1.6 million Hectares of land brought under climate-resilient practices

4



Contributions to other SDGs



1 NO POVERTY



4 QUALITY EDUCATION



7 AFFORDABLE AND CLEAN ENERGY



8 DECENT WORK AND ECONOMIC GROWTH



9 INDUSTRY, INNOVATION AND INFRASTRUCTURE



Target 1.4



129 million Persons receiving services

72 959 persons whose ownership or user rights over natural resources have been registered in national cadasters and/or geographic information management systems

Target 4.4



1.4 million Persons trained in Income-generating activities and business management

Target 7.1



148 132 Persons accessing technologies that sequester carbon or reduce greenhouse gas emissions

Target 8.2



532 521 Rural enterprises accessing business development services

Target 9.1



13 066 Km Roads constructed, rehabilitated or upgraded

5

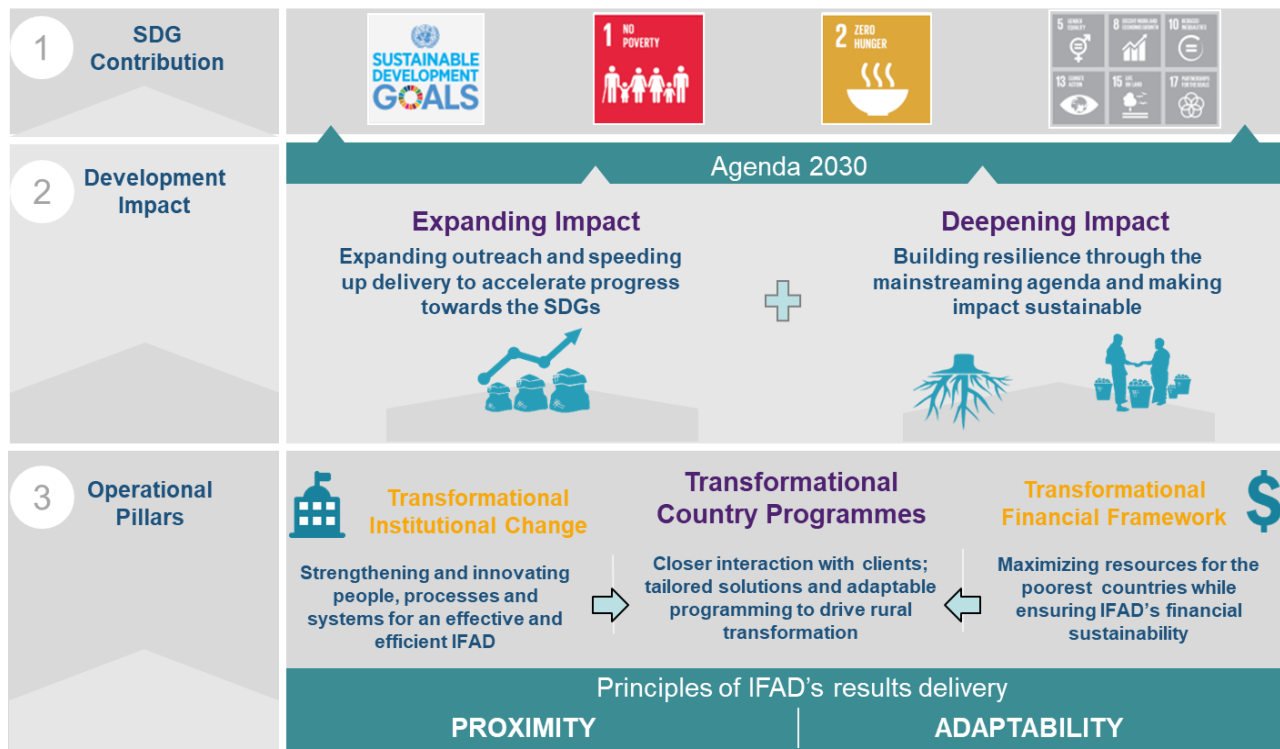
Looking to IFAD12:

An evolving business model

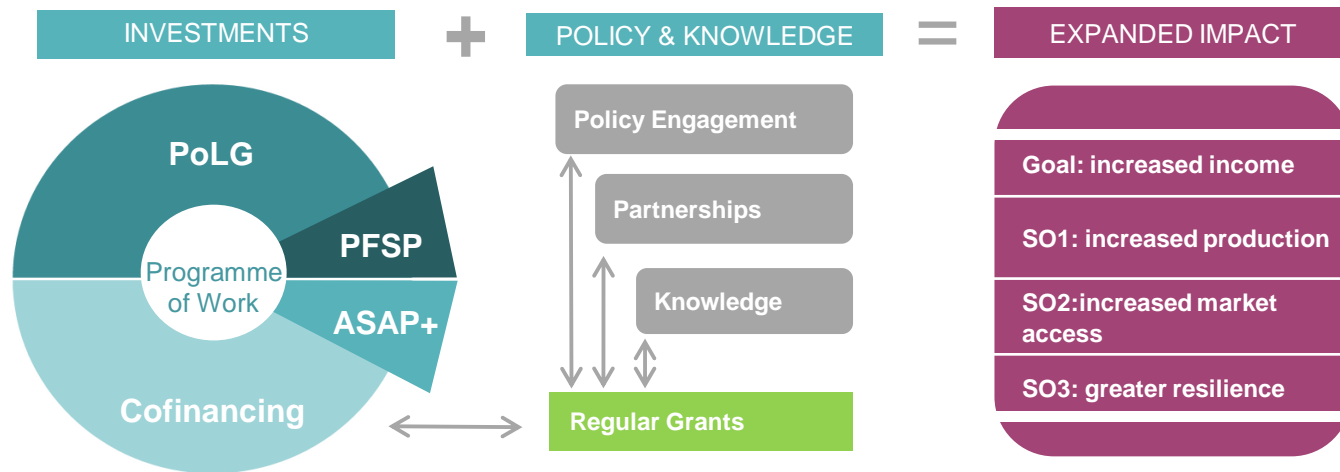
	IFAD 11	IFAD 12
Resource distribution	80 countries 90% resources to LICs & LMICs 10% to UMICs	Approx. 80 countries (indicative) 100% core to LICs & LMICs Borrowed mainly to UMICs & LMICs
Instruments & tools	Fully programmed PoLG (PBAS) RBLs & RO Pilots Differentiated loan pricing Partnerships framework UN reform with UNDS and UNCT	PoLG: - Core (PBAS) 66 countries - Borrowed (BRAM) 42 countries New instruments (MPA) ASAP+ & PSFP Policy & closer partnerships
Approach to portfolio management	Hubs & ICOs Continuous supervision & implementation support Mainstreaming – 4 themes Improved quality & performance	Decentralized workforce & skills Adaptive management & real-time decision making Focus on fragility, sustainability & efficiency




Looking to IFAD12: Underpinned by a theory of change



Transformational country programmes: adapted to changing needs



+ immediate impact

 **RPSF** Initiated by IFAD in response to COVID-19 towards inputs, market access, and financial and digital services

Proximity: Decentralisation 2.0

Further decentralisation – from 35% to 45% of IFAD staff outside HQ

- IFAD will increase the number of ICOs from 40 to the “maximum affordable” number of single country and multi country CD-led ICOs and CPO-led offices.
- IFAD will establish five regional offices with staff from all Departments. These offices will be headed by a Director.
- IFAD will increasingly hire national staff both to support implementation of projects and perform administrative functions



Thank you

